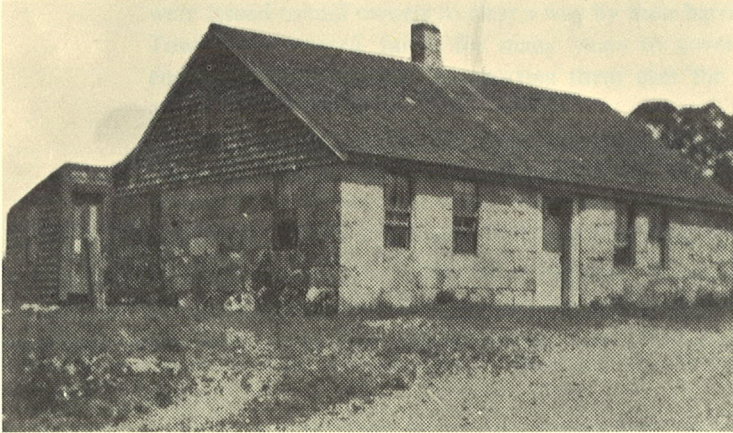


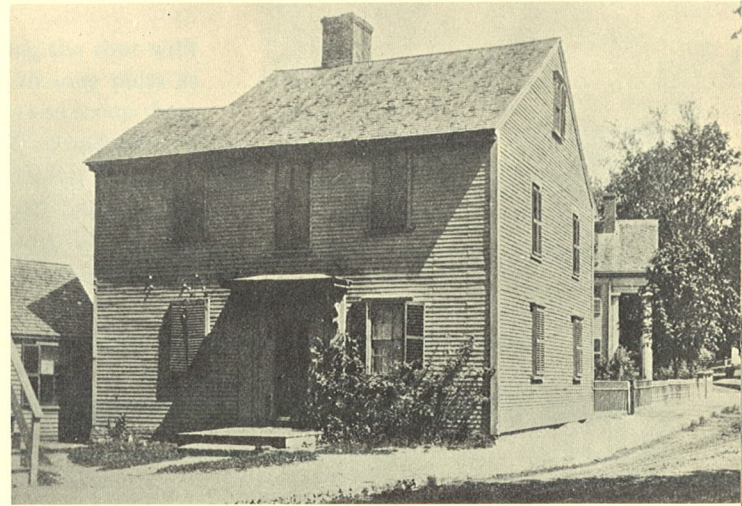
Weymouth, situated between Boston and Cape Cod, soon developed a flourishing business, accommodating the many stagecoach passengers. Taverns and Inns sprang up on all the main roads of travel giving passengers and horses alike, a chance to rest for the journey ahead . . .

Toll Houses **— Taverns** **— Inns**



Bela Pratt's Toll House
1284 Washington Street
ca 1800's

(Picture by Weymouth Historical Society)



Arnold's Tavern
(Pre-Revolutionary)
Commercial Street, Weymouth Landing
(demolished)

(Picture courtesy of Ernest B. Remondini)



Rice's Tavern
840 Broad Street
(now Peck's Funeral Home)

(Picture courtesy of Mr. Russell Peck)

Hovey Tavern
(Junction Pond & Thicket Streets)
One of the oldest taverns still existing . . .
built prior to Revolutionary War ca 1726

Courtesy of Ms. Garniss and Ms. Portwine



Shaws Tavern & Hostelry
Pre-Revolutionary Hostelry
was at approx. 875 Main Street
(now demolished)

(Picture Weymouth Historical Society files)

