

SYMBOL LEGEND	
	CATCH BASIN
	SIGN
	SEWER MANHOLE
	UTILITY POLE
	GAS GATE
	WATER GATE
	FLAG POLE
	SPOT ELEVATION
	TOP OF WALL
	VERTICAL CONCRETE CURB
	OVERHEAD ELECTRIC LINE
	GAS LINE
	SANITARY SEWER LINE
	WATER LINE
	CONTOUR LINE

PARKING TABLE		
	EXISTING	PROPOSED
BUILDING OCCUPANCY	120	180
PARKING REQUIREMENT	REQUIRED	PROPOSED
ASSEMBLY HALL 1 PER 5 SEATS	36	50

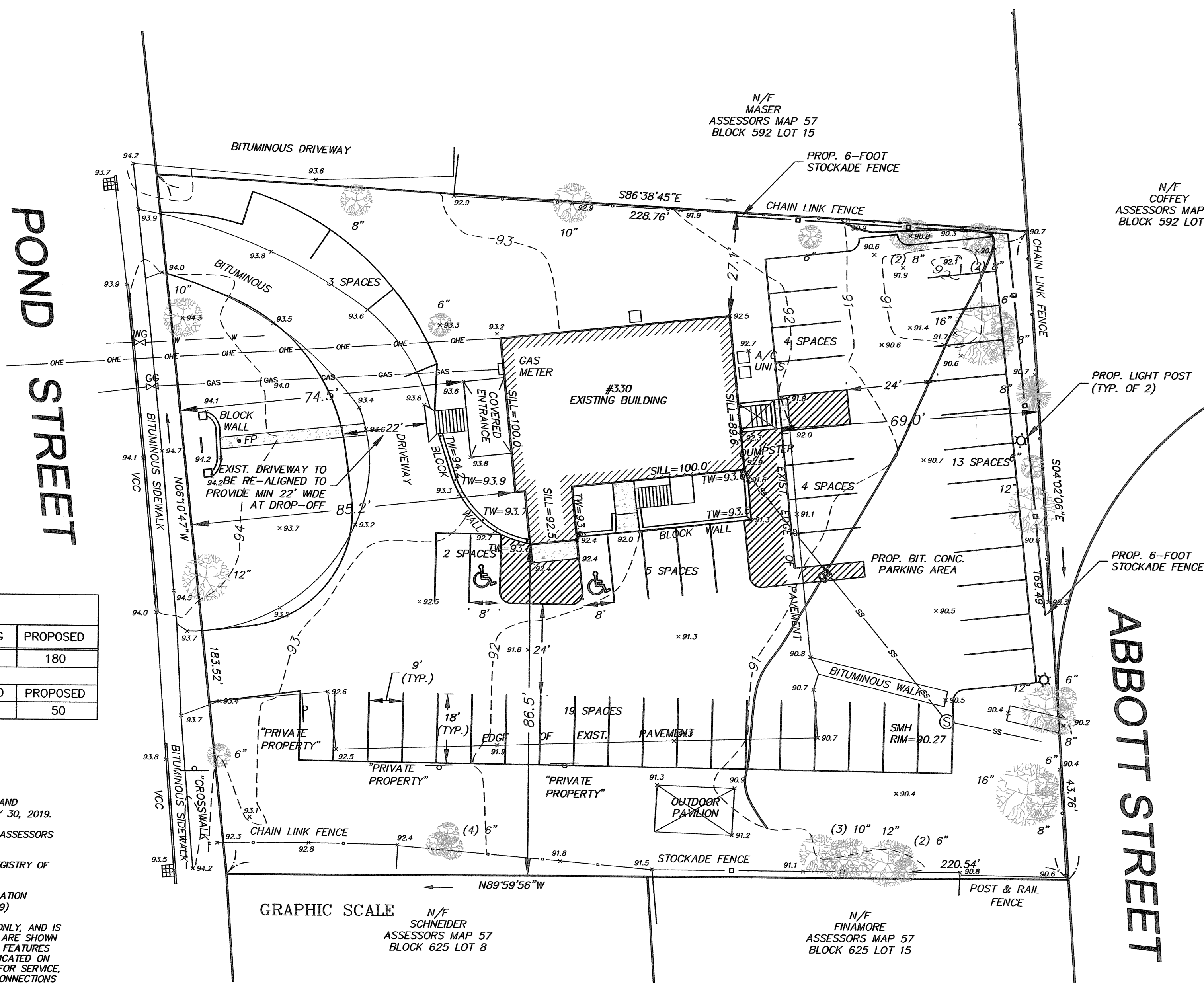
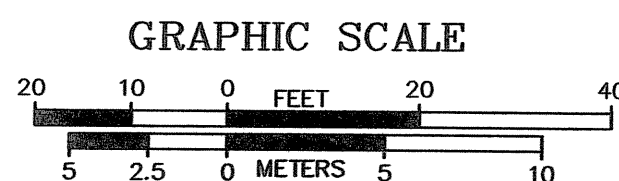
GENERAL NOTES

- EXISTING CONDITIONS OBTAINED FROM A SITE PLAN OF LAND PREPARED BY HOYT LAND SURVEYING AND DATED JANUARY 30, 2019.
- THE PROPERTY IS SHOWN ON THE TOWN OF WEYMOUTH ASSESSORS MAP 57, BLOCK 592 AS LOT 13 THEREON.
- LOCUS TITLE IS RECORDED AT THE NORFOLK COUNTY REGISTRY OF DEEDS AS FOLLOWS:

OWNER OF RECORD: POND PLAIN IMPROVEMENT ASSOCIATION
(DEED BOOK 1227 PAGE 388-389)

4. LOCATION OF UNDERGROUND UTILITIES IS APPROXIMATE ONLY, AND IS NOT WARRANTED TO BE CORRECT. UNDERGROUND UTILITIES ARE SHOWN BASED ON A VISUAL INSPECTION OF SURFACE OBSERVABLE FEATURES ONLY. ADDITIONAL UTILITIES MAY EXIST WHICH ARE NOT INDICATED ON THESE PLANS. ALL EXISTING UTILITIES SHALL BE VERIFIED FOR SERVICE, SIZE, INVERT ELEVATION, LOCATIONS, ETC. PRIOR TO NEW CONNECTIONS TO OR RELOCATION OF SAME. CONTRACTOR MUST NOTIFY DIG-SAFE AT 1-888-344-7233 AT LEAST 72 HOURS PRIOR TO ANY CONSTRUCTION. NOTIFY THIS FIRM IN WRITING OF ANY AND ALL DISCREPANCIES PRIOR TO COMMENCING ANY WORK.

5. THE ELEVATIONS DEPICTED HEREON ARE BASED ON AN ASSUMED DATUM.



REVISIONS:		
NO.:	COMMENTS:	DATE:

SITE PLAN	
330 POND STREET	
WEYMOUTH, MASSACHUSETTS	
DRAWN BY: SPH	DATE: 05-23-2019
DESIGNED BY:	LATEST REVISION:
CHECKED BY: SPH	

HARDY + HAN DESIGN GROUP, PC CIVIL ENGINEERING & LAND DEVELOPMENT CONSULTING	1285 WASHINGTON STREET WEYMOUTH, MA (781) 335-1464
	PREPARED FOR: P.P.I.A. WEYMOUTH, MASSACHUSETTS
SHEET C-1	

