

____ FOR _____
POND STREET ACQUISITIONS LLC

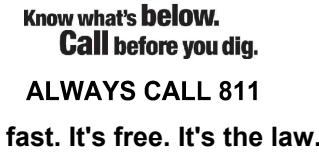
**LOCATION OF SITE:
505 POND STREET & 1537 MAIN STREET, CITY OF WEYMOUTH
NORFOLK COUNTY, MASSACHUSETTS
MAP #61, BLOCK #639, LOTS 4 & 7**

AL TANSIPS LAND TITLE SURVEY;
CONTOUR POINT ASSOCIATES, INC.
352 TURNPIKE STREET
SOUTH BURLINGHAM, MA 01772
DATE: 01/22/2020

GEOTECHNICAL ENGINEERING REPORT:
NORTHEAST GEOTECHNICAL, INC.
166 RAYMOND HALL DRIVE
NORTH ATTLEBOROUGH, MA 02780
DATE: 03/17/2022

WEYMOUTH CROSSING BUILDING A OVERALL
FLOOR PLAN & BUILDING B OVERALL FLOOR
PLAN
PHASE ZERO DESIGN
35 POND PARK ROAD, BAY 16
HIVEMAN, MA 02043
DATE RECEIVED: 03/30/2023

CONCEPTUAL IMPROVEMENT PLAN:
VANASSE & ASSOCIATES INC.
35 NEW ENGLAND BUSINESS CENTER DRIVE,
SUITE 140
ANDOVER, MA 01810
DATE RECEIVED: 11/21/2022
REVISED RECEIVED: 01/17/2023

[illegible]

PROJECT No.:	MAA220242.00
DRAWN BY:	CPB
CHECKED BY:	LMD
DATE:	04/05/2023
CAD I.D.:	MAA220242.00-SPPD-0C

**PROPOSED SITE
PLAN DOCUMENTS**

**POND STREET
ACQUISITIONS LLC**

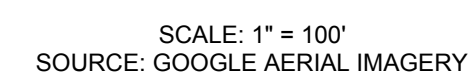
**MAP: 61 BLOCK: 639 LOTS: 4 & 7
505 POND STREET & 1537 MAIN
STREET,
CITY OF WEYMOUTH,
NORFOLK COUNTY,
MASSACHUSETTS**

352 TURNPIKE ROAD
SOUTHBOROUGH, MA 01772
Phone: (508) 480-9900

J.G. SWERLING
 JOSUUA G. SWERLING
 CIVIL
 11425
 PROFESSIONAL ENGINEER
 REGISTERED
 MASS. PROFESSIONAL ENGINEER No. 11425
 NEW HAMPSHIRE PROFESSIONAL ENGINEER No. 14695
 MAINE PROFESSIONAL ENGINEER No. 13816
 CONNECTICUT LICENSE No. 30785
 RHODE ISLAND LICENSE No. 11425

C-101

ORG. DATE - 04/05/2023



BOHLER//

SHEET TITLE	NUMBER
COVER SHEET	C-101
GENERAL NOTES SHEET	C-102
DEMOLITION PLAN	C-201
SITE LAYOUT PLAN	C-301
GRADING & DRAINAGE PLAN	C-401
UTILITY PLAN	C-501
SOIL EROSION & SEDIMENT CONTROL PLAN	C-601
SOIL EROSION & SEDIMENT CONTROL NOTES & DETAILS	C-602
LANDSCAPE PLAN	C-701
LANDSCAPE NOTES & DETAILS	C-702
LIGHTING PLAN	C-703
DETAIL SHEET	C-901
DETAIL SHEET	C-902
DETAIL SHEET	C-903
DETAIL SHEET	C-904
REFERENCE PLANS	
ALT/NSPS LAND TITLE SURVEY (BY OTHERS)	1 SHEET

[illegible]

1. THE CONTRACT NOTES MUST BE READ AND PART OF THE CONTRACT PACKAGE AND ARE PART OF THE CONTRACT DOCUMENTS. THE GENERAL NOTES ARE REFERENCED HEREIN, AND THE CONTRACTOR MUST REFER TO THEM AND FULLY COMPLY WITH THESE NOTES, IN THEIR ENTIRETY. THE CONTRACTOR MUST BE FAMILIAR WITH AND ACKNOWLEDGE FAMILIARITY WITH ALL OF THE GENERAL NOTES AND ALL OF THE PLANS SPECIFIC NOTES.

2. THE CONTRACTOR MUST CONDUCT DEMOLITION/REMOVALS ACTIVITIES IN SUCH A MANNER AS TO ENSURE MINIMUM INTERFERENCE WITH ROADS, STREETS, SIDEWALKS, WALKWAYS, AND ALL OTHER ADJACENT FACILITIES. THE CONTRACTOR MUST OBTAIN ALL APPLICABLE PERMITS FROM THE APPROPRIATE GOVERNMENTAL AUTHORITY(ES) PRIOR TO THE COMMENCEMENT OF ANY ROAD OPENING OR DEMOLITION ACTIVITIES IN OR ADJACENT TO THE RIGHT-OF-WAY.

3. WHEN DEMOLITION-RELATED ACTIVITIES IMPACT ROADWAYS AND/OR ROADWAY RIGHT-OF-WAY, THE CONTRACTOR MUST PROVIDE TRAFFIC CONTROL, AND GENERALLY ACCEPTED SAFE PRACTICES IN CONFORMANCE WITH THE CURRENT FEDERAL HIGHWAY ADMINISTRATION "MANUAL ON UNIFORM CONTROL DEVICES" AND/OR ANY APPLICABLE STATE OR LOCAL AGENCIES' SUPPLEMENTAL GUIDELINES, RULES, REGULATIONS, STANDARDS OR THE LIKE.

4. THE DEMOLITION (AND/OR REMOVALS) PLAN IS INTENDED TO PROVIDE GENERAL INFORMATION AND TO IDENTIFY ONLY CONDITIONS REGARDING ITEMS TO BE DEMOLISHED, REMOVED, AND/OR TO REMAIN.

4.1. THE CONTRACTOR MUST MAINTAIN ALL RECORD DOCUMENTS AND INFORMATION TO BE KEPT FOR RECORD PROTECTION, RECORD AND/OR REPAIRS MUST INCLUDE THE RESTORATION OF ALL ITEMS AND FEATURES REPAIRED TO THEIR PRE-DEMOLITION CONDITION, OR BETTER. CONTRACTOR MUST PERFORM ALL REPAIRS AT THE CONTRACTOR'S SOLE EXPENSE.

4.2. THIS PLAN IS NOT INTENDED TO AND DOES NOT PROVIDE DIRECTION REGARDING THE MEANS, METHODS, SEQUENCING, TECHNIQUES AND PROCEDURES TO BE EMPLOYED TO CONDUCT THE DEMOLITION/REMOVALS ACTIVITIES. IN WRITING, THE CONTRACTOR MUST BE USED TO BE IN STRICT ACCORDANCE WITH AND CONFORMANCE WITH ALL STATE, FEDERAL, AND MUNICIPAL REQUIREMENTS. THE CONTRACTOR MUST COMPLY WITH ALL OSHA AND OTHER SAFETY PRECAUTIONS NECESSARY TO PROVIDE A SAFE WORK SITE FOR THE CONTRACTOR AND THE PUBLIC.

5. THE CONTRACTOR MUST PROVIDE ALL "METHODS AND MEANS" NECESSARY TO PREVENT MOVEMENT, SETTLEMENT, OR COLLAPSE OF EXISTING STRUCTURES, AND ANY OTHER IMPROVEMENTS THAT ARE REMAINING ON OR OFF SITE. THE CONTRACTOR, AT THE CONTRACTOR'S SOLE COST, MUST REPAIR OR REPLACE ALL EXISTING UTILITIES AND STRUCTURES THAT ARE DAMAGED OR DESTROYED BY THE DEMOLITION/REMOVALS ACTIVITIES. REPAIRS MUST INCLUDE THE RESTORATION OF ALL ITEMS AND FEATURES REPAIRED TO THEIR PRE-DEMOLITION CONDITION, OR BETTER. CONTRACTOR MUST PERFORM ALL REPAIRS AT THE CONTRACTOR'S SOLE EXPENSE.

6. THE CONTRACTOR MUST MAINTAIN ALL RECORD DOCUMENTS AND INFORMATION TO BE KEPT FOR RECORD PROTECTION, RECORD AND/OR REPAIRS MUST INCLUDE THE RESTORATION OF ALL ITEMS AND FEATURES REPAIRED TO THEIR PRE-DEMOLITION CONDITION, OR BETTER. CONTRACTOR MUST PERFORM ALL REPAIRS AT THE CONTRACTOR'S SOLE EXPENSE.

7. THE DEMOLITION IS A SYSTEMATIC AND SAFE MANAGER, COMPLYING WITH ALL OSHA REQUIREMENTS, TO ENSURE PUBLIC AND CONTRACTOR SAFETY AND SAFETY TO ALL PROPERTY ON THE SITE OR ADJACENT OR NEAR TO THE SAME.

8. THE CONTRACTOR IS RESPONSIBLE FOR THE DEMOLITION/REMOVALS ACTIVITIES, BUT IS NOT LIMITED TO, THE INSTALLATION AND MAINTENANCE OF BARRIERS, FENCING, OTHER APPROPRIATE AND/OR NECESSARY SAFETY FEATURES AND ITEMS NECESSARY TO PROTECT THE PUBLIC FROM AREAS OF CONSTRUCTION AND CONSTRUCTION ACTIVITIES. THE CONTRACTOR MUST SAFEGUARD THE SITE AS NECESSARY TO PERFORM THE DEMOLITION IN SUCH A MANNER AS TO PREVENT THE ENTRY OF ALL UNAUTHORIZED PERSONS AT ANY TIME, TO OR NEAR THE DEMOLITION AREA.

9. CONTRACTOR'S RESPONSIBILITY FOR THE DEMOLITION/REMOVALS ACTIVITIES. THE CONTRACTOR MUST BE USED TO BE IN STRICT ACCORDANCE WITH AND CONFORMANCE WITH ALL STATE, FEDERAL, AND MUNICIPAL REQUIREMENTS. THE CONTRACTOR MUST COMPLY WITH ALL OSHA AND OTHER SAFETY PRECAUTIONS NECESSARY TO PROVIDE A SAFE WORK SITE FOR THE CONTRACTOR AND THE PUBLIC.

10. THE CONTRACTOR MUST BECOME FAMILIAR WITH THE APPLICABLE UTILITY SERVICE PROVIDER REQUIREMENTS AND IS RESPONSIBLE FOR ALL COORDINATION REGARDING UTILITY DEMOLITION AND/OR DISCONNECTION AS IDENTIFIED OR REQUIRED FOR THE PROJECT. THE CONTRACTOR MUST OBTAIN ALL NECESSARY PERMITS AND APPROVALS FROM THE UTILITY SERVICE PROVIDER(S) PRIOR TO THE DEMOLITION/REMOVALS ACTIVITIES. THE CONTRACTOR MUST MAINTAIN ALL RECORD DOCUMENTS AND INFORMATION TO BE KEPT FOR RECORD PROTECTION, RECORD AND/OR REPAIRS MUST INCLUDE THE RESTORATION OF ALL ITEMS AND FEATURES REPAIRED TO THEIR PRE-DEMOLITION CONDITION, OR BETTER. CONTRACTOR MUST PERFORM ALL REPAIRS AT THE CONTRACTOR'S SOLE EXPENSE.

11. THE CONTRACTOR MUST MAINTAIN ALL RECORD DOCUMENTS AND INFORMATION TO BE KEPT FOR RECORD PROTECTION, RECORD AND/OR REPAIRS MUST INCLUDE THE RESTORATION OF ALL ITEMS AND FEATURES REPAIRED TO THEIR PRE-DEMOLITION CONDITION, OR BETTER. CONTRACTOR MUST PERFORM ALL REPAIRS AT THE CONTRACTOR'S SOLE EXPENSE.

12. THE CONTRACTOR MUST MAINTAIN ALL RECORD DOCUMENTS AND INFORMATION TO BE KEPT FOR RECORD PROTECTION, RECORD AND/OR REPAIRS MUST INCLUDE THE RESTORATION OF ALL ITEMS AND FEATURES REPAIRED TO THEIR PRE-DEMOLITION CONDITION, OR BETTER. CONTRACTOR MUST PERFORM ALL REPAIRS AT THE CONTRACTOR'S SOLE EXPENSE.

13. THE CONTRACTOR MUST MAINTAIN ALL RECORD DOCUMENTS AND INFORMATION TO BE KEPT FOR RECORD PROTECTION, RECORD AND/OR REPAIRS MUST INCLUDE THE RESTORATION OF ALL ITEMS AND FEATURES REPAIRED TO THEIR PRE-DEMOLITION CONDITION, OR BETTER. CONTRACTOR MUST PERFORM ALL REPAIRS AT THE CONTRACTOR'S SOLE EXPENSE.

14. THE CONTRACTOR MUST MAINTAIN ALL RECORD DOCUMENTS AND INFORMATION TO BE KEPT FOR RECORD PROTECTION, RECORD AND/OR REPAIRS MUST INCLUDE THE RESTORATION OF ALL ITEMS AND FEATURES REPAIRED TO THEIR PRE-DEMOLITION CONDITION, OR BETTER. CONTRACTOR MUST PERFORM ALL REPAIRS AT THE CONTRACTOR'S SOLE EXPENSE.

15. THE CONTRACTOR MUST MAINTAIN ALL RECORD DOCUMENTS AND INFORMATION TO BE KEPT FOR RECORD PROTECTION, RECORD AND/OR REPAIRS MUST INCLUDE THE RESTORATION OF ALL ITEMS AND FEATURES REPAIRED TO THEIR PRE-DEMOLITION CONDITION, OR BETTER. CONTRACTOR MUST PERFORM ALL REPAIRS AT THE CONTRACTOR'S SOLE EXPENSE.

16. THE CONTRACTOR MUST MAINTAIN ALL RECORD DOCUMENTS AND INFORMATION TO BE KEPT FOR RECORD PROTECTION, RECORD AND/OR REPAIRS MUST INCLUDE THE RESTORATION OF ALL ITEMS AND FEATURES REPAIRED TO THEIR PRE-DEMOLITION CONDITION, OR BETTER. CONTRACTOR MUST PERFORM ALL REPAIRS AT THE CONTRACTOR'S SOLE EXPENSE.

17. THE CONTRACTOR MUST MAINTAIN ALL RECORD DOCUMENTS AND INFORMATION TO BE KEPT FOR RECORD PROTECTION, RECORD AND/OR REPAIRS MUST INCLUDE THE RESTORATION OF ALL ITEMS AND FEATURES REPAIRED TO THEIR PRE-DEMOLITION CONDITION, OR BETTER. CONTRACTOR MUST PERFORM ALL REPAIRS AT THE CONTRACTOR'S SOLE EXPENSE.

18. THE CONTRACTOR MUST MAINTAIN ALL RECORD DOCUMENTS AND INFORMATION TO BE KEPT FOR RECORD PROTECTION, RECORD AND/OR REPAIRS MUST INCLUDE THE RESTORATION OF ALL ITEMS AND FEATURES REPAIRED TO THEIR PRE-DEMOLITION CONDITION, OR BETTER. CONTRACTOR MUST PERFORM ALL REPAIRS AT THE CONTRACTOR'S SOLE EXPENSE.

19. THE CONTRACTOR MUST MAINTAIN ALL RECORD DOCUMENTS AND INFORMATION TO BE KEPT FOR RECORD PROTECTION, RECORD AND/OR REPAIRS MUST INCLUDE THE RESTORATION OF ALL ITEMS AND FEATURES REPAIRED TO THEIR PRE-DEMOLITION CONDITION, OR BETTER. CONTRACTOR MUST PERFORM ALL REPAIRS AT THE CONTRACTOR'S SOLE EXPENSE.

20. THE CONTRACTOR MUST MAINTAIN ALL RECORD DOCUMENTS AND INFORMATION TO BE KEPT FOR RECORD PROTECTION, RECORD AND/OR REPAIRS MUST INCLUDE THE RESTORATION OF ALL ITEMS AND FEATURES REPAIRED TO THEIR PRE-DEMOLITION CONDITION, OR BETTER. CONTRACTOR MUST PERFORM ALL REPAIRS AT THE CONTRACTOR'S SOLE EXPENSE.

21. THE CONTRACTOR MUST MAINTAIN ALL RECORD DOCUMENTS AND INFORMATION TO BE KEPT FOR RECORD PROTECTION, RECORD AND/OR REPAIRS MUST INCLUDE THE RESTORATION OF ALL ITEMS AND FEATURES REPAIRED TO THEIR PRE-DEMOLITION CONDITION, OR BETTER. CONTRACTOR MUST PERFORM ALL REPAIRS AT THE CONTRACTOR'S SOLE EXPENSE.

22. THE CONTRACTOR MUST MAINTAIN ALL RECORD DOCUMENTS AND INFORMATION TO BE KEPT FOR RECORD PROTECTION, RECORD AND/OR REPAIRS MUST INCLUDE THE RESTORATION OF ALL ITEMS AND FEATURES REPAIRED TO THEIR PRE-DEMOLITION CONDITION, OR BETTER. CONTRACTOR MUST PERFORM ALL REPAIRS AT THE CONTRACTOR'S SOLE EXPENSE.

23. THE CONTRACTOR MUST MAINTAIN ALL RECORD DOCUMENTS AND INFORMATION TO BE KEPT FOR RECORD PROTECTION, RECORD AND/OR REPAIRS MUST INCLUDE THE RESTORATION OF ALL ITEMS AND FEATURES REPAIRED TO THEIR PRE-DEMOLITION CONDITION, OR BETTER. CONTRACTOR MUST PERFORM ALL REPAIRS AT THE CONTRACTOR'S SOLE EXPENSE.

24. THE CONTRACTOR MUST MAINTAIN ALL RECORD DOCUMENTS AND INFORMATION TO BE KEPT FOR RECORD PROTECTION, RECORD AND/OR REPAIRS MUST INCLUDE THE RESTORATION OF ALL ITEMS AND FEATURES REPAIRED TO THEIR PRE-DEMOLITION CONDITION, OR BETTER. CONTRACTOR MUST PERFORM ALL REPAIRS AT THE CONTRACTOR'S SOLE EXPENSE.

25. THE CONTRACTOR MUST MAINTAIN ALL RECORD DOCUMENTS AND INFORMATION TO BE KEPT FOR RECORD PROTECTION, RECORD AND/OR REPAIRS MUST INCLUDE THE RESTORATION OF ALL ITEMS AND FEATURES REPAIRED TO THEIR PRE-DEMOLITION CONDITION, OR BETTER. CONTRACTOR MUST PERFORM ALL REPAIRS AT THE CONTRACTOR'S SOLE EXPENSE.

26. THE CONTRACTOR MUST MAINTAIN ALL RECORD DOCUMENTS AND INFORMATION TO BE KEPT FOR RECORD PROTECTION, RECORD AND/OR REPAIRS MUST INCLUDE THE RESTORATION OF ALL ITEMS AND FEATURES REPAIRED TO THEIR PRE-DEMOLITION CONDITION, OR BETTER. CONTRACTOR MUST PERFORM ALL REPAIRS AT THE CONTRACTOR'S SOLE EXPENSE.

27. THE CONTRACTOR MUST MAINTAIN ALL RECORD DOCUMENTS AND INFORMATION TO BE KEPT FOR RECORD PROTECTION, RECORD AND/OR REPAIRS MUST INCLUDE THE RESTORATION OF ALL ITEMS AND FEATURES REPAIRED TO THEIR PRE-DEMOLITION CONDITION, OR BETTER. CONTRACTOR MUST PERFORM ALL REPAIRS AT THE CONTRACTOR'S SOLE EXPENSE.

28. THE CONTRACTOR MUST MAINTAIN ALL RECORD DOCUMENTS AND INFORMATION TO BE KEPT FOR RECORD PROTECTION, RECORD AND/OR REPAIRS MUST INCLUDE THE RESTORATION OF ALL ITEMS AND FEATURES REPAIRED TO THEIR PRE-DEMOLITION CONDITION, OR BETTER. CONTRACTOR MUST PERFORM ALL REPAIRS AT THE CONTRACTOR'S SOLE EXPENSE.

29. THE CONTRACTOR MUST MAINTAIN ALL RECORD DOCUMENTS AND INFORMATION TO BE KEPT FOR RECORD PROTECTION, RECORD AND/OR REPAIRS MUST INCLUDE THE RESTORATION OF ALL ITEMS AND FEATURES REPAIRED TO THEIR PRE-DEMOLITION CONDITION, OR BETTER. CONTRACTOR MUST PERFORM ALL REPAIRS AT THE CONTRACTOR'S SOLE EXPENSE.

30. THE CONTRACTOR MUST MAINTAIN ALL RECORD DOCUMENTS AND INFORMATION TO BE KEPT FOR RECORD PROTECTION, RECORD AND/OR REPAIRS MUST INCLUDE THE RESTORATION OF ALL ITEMS AND FEATURES REPAIRED TO THEIR PRE-DEMOLITION CONDITION, OR BETTER. CONTRACTOR MUST PERFORM ALL REPAIRS AT THE CONTRACTOR'S SOLE EXPENSE.

31. THE CONTRACTOR MUST MAINTAIN ALL RECORD DOCUMENTS AND INFORMATION TO BE KEPT FOR RECORD PROTECTION, RECORD AND/OR REPAIRS MUST INCLUDE THE RESTORATION OF ALL ITEMS AND FEATURES REPAIRED TO THEIR PRE-DEMOLITION CONDITION, OR BETTER. CONTRACTOR MUST PERFORM ALL REPAIRS AT THE CONTRACTOR'S SOLE EXPENSE.

32. THE CONTRACTOR MUST MAINTAIN ALL RECORD DOCUMENTS AND INFORMATION TO BE KEPT FOR RECORD PROTECTION, RECORD AND/OR REPAIRS MUST INCLUDE THE RESTORATION OF ALL ITEMS AND FEATURES REPAIRED TO THEIR PRE-DEMOLITION CONDITION, OR BETTER. CONTRACTOR MUST PERFORM ALL REPAIRS AT THE CONTRACTOR'S SOLE EXPENSE.

33. THE CONTRACTOR MUST MAINTAIN ALL RECORD DOCUMENTS AND INFORMATION TO BE KEPT FOR RECORD PROTECTION, RECORD AND/OR REPAIRS MUST INCLUDE THE RESTORATION OF ALL ITEMS AND FEATURES REPAIRED TO THEIR PRE-DEMOLITION CONDITION, OR BETTER. CONTRACTOR MUST PERFORM ALL REPAIRS AT THE CONTRACTOR'S SOLE EXPENSE.

34. THE CONTRACTOR MUST MAINTAIN ALL RECORD DOCUMENTS AND INFORMATION TO BE KEPT FOR RECORD PROTECTION, RECORD AND/OR REPAIRS MUST INCLUDE THE RESTORATION OF ALL ITEMS AND FEATURES REPAIRED TO THEIR PRE-DEMOLITION CONDITION, OR BETTER. CONTRACTOR MUST PERFORM ALL REPAIRS AT THE CONTRACTOR'S SOLE EXPENSE.

35. THE CONTRACTOR MUST MAINTAIN ALL RECORD DOCUMENTS AND INFORMATION TO BE KEPT FOR RECORD PROTECTION, RECORD AND/OR REPAIRS MUST INCLUDE THE RESTORATION OF ALL ITEMS AND FEATURES REPAIRED TO THEIR PRE-DEMOLITION CONDITION, OR BETTER. CONTRACTOR MUST PERFORM ALL REPAIRS AT THE CONTRACTOR'S SOLE EXPENSE.

36. THE CONTRACTOR MUST MAINTAIN ALL RECORD DOCUMENTS AND INFORMATION TO BE KEPT FOR RECORD PROTECTION, RECORD AND/OR REPAIRS MUST INCLUDE THE RESTORATION OF ALL ITEMS AND FEATURES REPAIRED TO THEIR PRE-DEMOLITION CONDITION, OR BETTER. CONTRACTOR MUST PERFORM ALL REPAIRS AT THE CONTRACTOR'S SOLE EXPENSE.

37. THE CONTRACTOR MUST MAINTAIN ALL RECORD DOCUMENTS AND INFORMATION TO BE KEPT FOR RECORD PROTECTION, RECORD AND/OR REPAIRS MUST INCLUDE THE RESTORATION OF ALL ITEMS AND FEATURES REPAIRED TO THEIR PRE-DEMOLITION CONDITION, OR BETTER. CONTRACTOR MUST PERFORM ALL REPAIRS AT THE CONTRACTOR'S SOLE EXPENSE.

38. THE CONTRACTOR MUST MAINTAIN ALL RECORD DOCUMENTS AND INFORMATION TO BE KEPT FOR RECORD PROTECTION, RECORD AND/OR REPAIRS MUST INCLUDE THE RESTORATION OF ALL ITEMS AND FEATURES REPAIRED TO THEIR PRE-DEMOLITION CONDITION, OR BETTER. CONTRACTOR MUST PERFORM ALL REPAIRS AT THE CONTRACTOR'S SOLE EXPENSE.

39. THE CONTRACTOR MUST MAINTAIN ALL RECORD DOCUMENTS AND INFORMATION TO BE KEPT FOR RECORD PROTECTION, RECORD AND/OR REPAIRS MUST INCLUDE THE RESTORATION OF ALL ITEMS AND FEATURES REPAIRED TO THEIR PRE-DEMOLITION CONDITION, OR BETTER. CONTRACTOR MUST PERFORM ALL REPAIRS AT THE CONTRACTOR'S SOLE EXPENSE.

40. THE CONTRACTOR MUST MAINTAIN ALL RECORD DOCUMENTS AND INFORMATION TO BE KEPT FOR RECORD PROTECTION, RECORD AND/OR REPAIRS MUST INCLUDE THE RESTORATION OF ALL ITEMS AND FEATURES REPAIRED TO THEIR PRE-DEMOLITION CONDITION, OR BETTER. CONTRACTOR MUST PERFORM ALL REPAIRS AT THE CONTRACTOR'S SOLE EXPENSE.

41. THE CONTRACTOR MUST MAINTAIN ALL RECORD DOCUMENTS AND INFORMATION TO BE KEPT FOR RECORD PROTECTION, RECORD AND/OR REPAIRS MUST INCLUDE THE RESTORATION OF ALL ITEMS AND FEATURES REPAIRED TO THEIR PRE-DEMOLITION CONDITION, OR BETTER. CONTRACTOR MUST PERFORM ALL REPAIRS AT THE CONTRACTOR'S SOLE EXPENSE.

42. THE CONTRACTOR MUST MAINTAIN ALL RECORD DOCUMENTS AND INFORMATION TO BE KEPT FOR RECORD PROTECTION, RECORD AND/OR REPAIRS MUST INCLUDE THE RESTORATION OF ALL ITEMS AND FEATURES REPAIRED TO THEIR PRE-DEMOLITION CONDITION, OR BETTER. CONTRACTOR MUST PERFORM ALL REPAIRS AT THE CONTRACTOR'S SOLE EXPENSE.

43. THE CONTRACTOR MUST MAINTAIN ALL RECORD DOCUMENTS AND INFORMATION TO BE KEPT FOR RECORD PROTECTION, RECORD AND/OR REPAIRS MUST INCLUDE THE RESTORATION OF ALL ITEMS AND FEATURES REPAIRED TO THEIR PRE-DEMOLITION CONDITION, OR BETTER. CONTRACTOR MUST PERFORM ALL REPAIRS AT THE CONTRACTOR'S SOLE EXPENSE.

44. THE CONTRACTOR MUST MAINTAIN ALL RECORD DOCUMENTS AND INFORMATION TO BE KEPT FOR RECORD PROTECTION, RECORD AND/OR REPAIRS MUST INCLUDE THE RESTORATION OF ALL ITEMS AND FEATURES REPAIRED TO THEIR PRE-DEMOLITION CONDITION, OR BETTER. CONTRACTOR MUST PERFORM ALL REPAIRS AT THE CONTRACTOR'S SOLE EXPENSE.

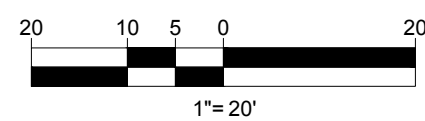
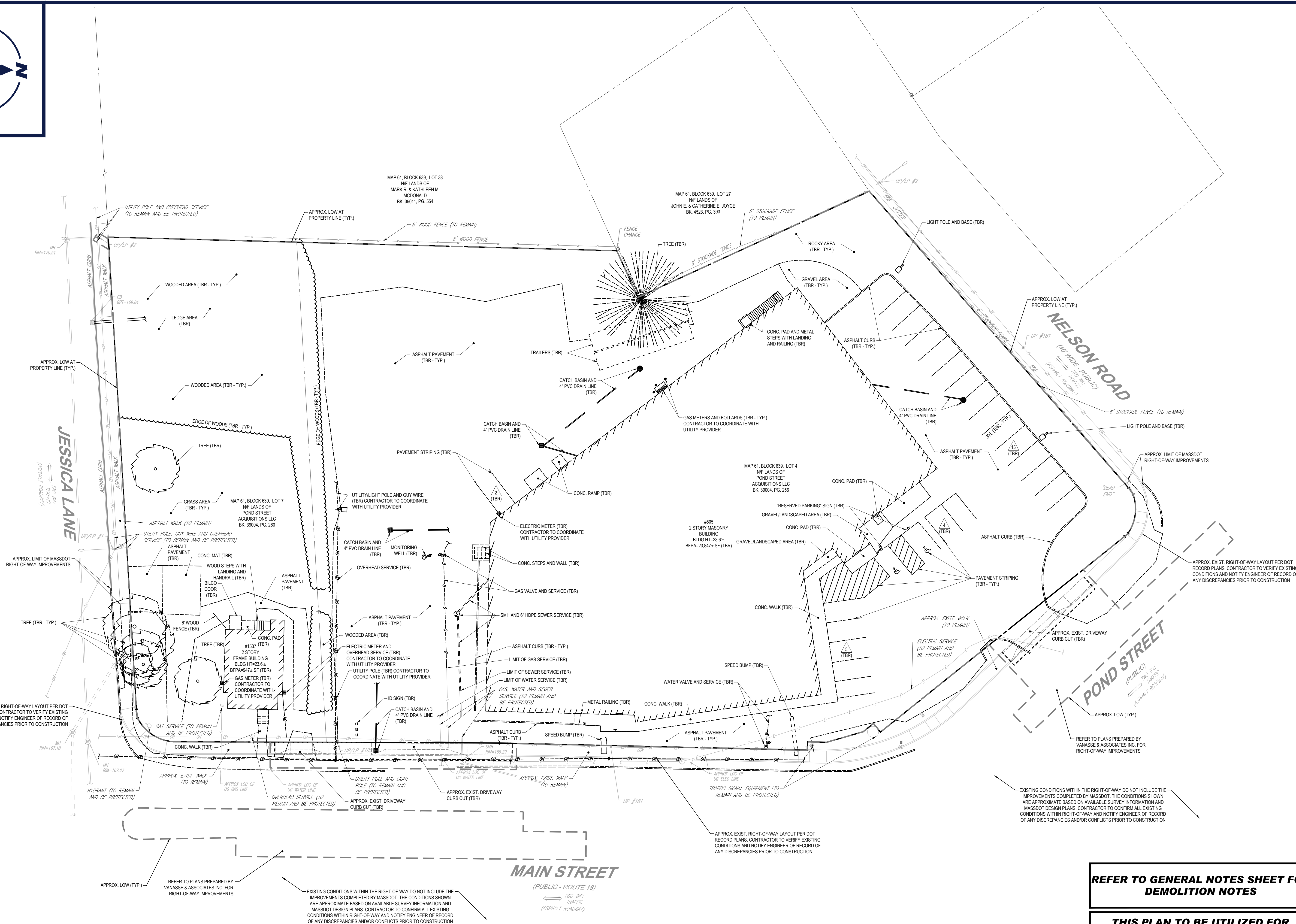
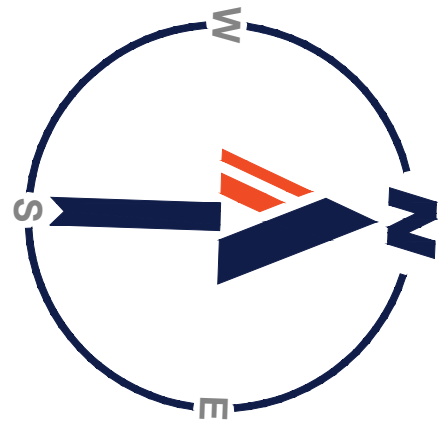
45. THE CONTRACTOR MUST MAINTAIN ALL RECORD DOCUMENTS AND INFORMATION TO BE KEPT FOR RECORD

[illegible]

ALL ACCESSIBLE (A.K.A. ADA) COMPONENTS AND ACCESSIBLE ROUTES MUST BE CONSTRUCTED TO MEET, AT A MINIMUM, THE MORE STRINGENT OF (A) THE REQUIREMENTS OF "THE AMERICANS WITH DISABILITIES ACT" (ADAA) CODE 42 U.S.C. § 12101 ET SEQ. AND 42 U.S.C. § 9411 ET SEQ.), AND (B) ANY APPLICABLE LOCAL AND STATE GUIDELINES, AND ANY AND ALL AMENDMENTS TO BOTH, WHICH ARE IN EFFECT WHEN THESE PLANS WERE COMPLETED.	
2.	THE CONTRACTOR MUST REVIEW ALL DOCUMENTS REFERENCED IN THESE NOTES FOR AUTHORITY, COMPLIANCE AND CONSISTENCY WITH INDUSTRY GUIDELINES.
3.	THE CONTRACTOR MUST EXERCISE APPROPRIATE CARE AND PRECISION IN CONSTRUCTION OF ACCESSIBLE (ADA) COMPONENTS AND ACCESSIBLE ROUTES FOR THE SITE. FINISHED SURFACES ALONG THE ACCESSIBLE ROUTE OF TRAVEL FROM PARKING SPACES, PUBLIC TRANSPORTATION, PEDESTRIAN ACCESS, AND INTER-BUILDING ACCESS, TO POINTS OF ACCESSIBLE BUILDING ENTRANCE/EXIT, MUST COMPLY WITH THE ACCESSIBLE GUIDELINES AND REQUIREMENTS WHICH INCLUDE, BUT ARE NOT LIMITED TO THE FOLLOWING:
3.1.	ACCESSIBLE PARKING SPACES AND ACCESS AISLES SLOPES MUST NOT EXCEED 1:50 (2.0%) IN ANY DIRECTION.
3.2.	PATH OF TRAVEL ALONG ACCESSIBLE ROUTE MUST PROVIDE A 36-INCHES MINIMUM WIDTH (48-INCHES PREFERRED), OR AS SPECIFIED BY THE GOVERNING AGENCY. UNOBSTRUCTED WIDTH OF TRAVEL (CAR OVERHANGS AND/OR HANDRAILS) MUST NOT REDUCE THIS MINIMUM WIDTH. THE SLOPE MUST NOT EXCEED 1:20 (5.0%) IN THE DIRECTION OF TRAVEL AND MUST NOT EXCEED 1:50 (2.0%) IN CROSS SLOPE. WHERE ACCESSIBLE PATH OF TRAVEL IS GREATER THAN 1:20 (5.0%), AN ACCESSIBLE RAMP MUST BE PROVIDED. ALONG THE ACCESSIBLE PATH OF TRAVEL, OPENINGS MUST NOT EXCEED 1/2-INCH MINIMUM WIDTH. VERTICAL CHANGES OF UP TO 1/2-INCH ARE PERMITTED ONLY IF THEY INCLUDE A 1/4-INCH BEVEL AT A SLOPE NOT STEEPER THAN 1:2. NO VERTICAL CHANGES OVER 1/4-INCH ARE PERMITTED.
3.3.	ACCESSIBLE RAMP MUST NOT EXCEED A SLOPE OF 1:12 (8.3%) AND A RISE OF 30-INCHES. LEVEL LANDINGS MUST BE PROVIDED AT EACH END OF ACCESSIBLE RAMP. LANDINGS MUST PROVIDE POSITIVE DRAINAGE AWAY FROM STRUCTURES, AND MUST NOT EXCEED 1:50 (2.0%) SLOPE IN ANY DIRECTION. RAMPS THAT CHANGE DIRECTION BETWEEN RUNS AT LANDINGS MUST HAVE A CLEAR LANDING OF A MINIMUM OF 60-INCHES BY 60-INCHES. HAND RAILS ON BOTH SIDES OF THE RAMP MUST BE PROVIDED ON AN ACCESSIBLE PATH OF TRAVEL GREATER THAN 6-INCHES. ACCESSIBLE CURB RAMPS MUST NOT EXCEED A SLOPE OF 1:12 (8.3%). WHERE FLARED SIDES ARE PROVIDED, THEY MUST NOT EXCEED 1:10 (10%) SLOPE. LEVEL LANDINGS MUST BE PROVIDED AT RAMPS UP AT A MINIMUM OF 36-INCHES LONG (48-INCHES PREFERRED). IN ALTERNATIONS, WHERE THERE IS NO LANDING AT THE TOP, FLARE SIDES SLOPES MUST NOT EXCEED A SLOPE OF 1:12 (8.3%) AND OTHER REFERENCES INCORPORATED BY CODE.
3.5.	DOORWAY LANDINGS AREAS MUST BE PROVIDED ON THE EXTERIOR SIDE OF ANY DOOR LEADING TO AN ACCESSIBLE PATH OF TRAVEL. THIS LANDING MUST BE SLOPED AWAY FROM THE DOOR NO MORE THAN 1:50 (2.0%) FOR POSITIVE DRAINAGE. THIS LANDING AREA MUST NOT BE FEWER THAN 60-INCHES (5 FEET) LONG, EXCEPT WHERE OTHERWISE CLEARLY PERMITTED BY ACCESSIBLE STANDARDS FOR ALTERNATIVE DOORWAY OPENING CONDITIONS. (SEE ICC/ANSI A117.1-2009 AND OTHER REFERENCES INCORPORATED BY CODE).
3.6.	WHEN THE PROPOSED CONSTRUCTION INVOLVES RECONSTRUCTION, MODIFICATION, REVISION OR EXTENSION OF OR TO ACCESSIBLE COMPONENTS FROM EXISTING DOORWAYS OR TRAVEL, THE CONTRACTOR MUST VERIFY ALL EXISTING ELEVATIONS SHOWN ON THE PLAN. NOTE THAT TABLE 405.2 OF THE DEPARTMENT OF JUSTICE'S ADA STANDARDS FOR ACCESSIBLE DESIGN ALLOWS FOR STEEPER RAMP SLOPES, IN RARE CIRCUMSTANCES, THE CONTRACTOR MUST IMMEDIATELY NOTIFY THE PROFESSIONAL OF RECORD AND BOILER, IN WRITING, OF ANY DISCREPANCIES AND/OR FIELD CONDITIONS THAT DIFFER IN ANY WAY OR IN ANY RESPECT FROM WHAT IS SHOWN ON THE PLANS BEFORE COMMENCING ANY WORK. CONSTRUCTED IMPROVEMENTS MUST FALL WITHIN THE MAXIMUM AND MINIMUM LIMITATIONS IMPOSED BY THE BARRIER FREE REGULATIONS AND THE ACCESSIBLE GUIDELINES.
3.7.	THE CONTRACTOR MUST VERIFY ALL OF THE SLOPES OF THE CONTRACTOR'S FORMS PRIOR TO POURING CONCRETE. IF ANY NON-CONFORMANCE EXISTS OR IS OBSERVED OR DISCOVERED, THE CONTRACTOR MUST IMMEDIATELY NOTIFY THE PROFESSIONAL OF RECORD AND BOILER, IN WRITING. PRIOR TO POURING CONCRETE, THE CONTRACTOR IS SOLELY RESPONSIBLE FOR ALL COSTS TO REMOVE, REPAIR AND/OR REPLACE NON-CONFORMING CONCRETE AND/OR PAVEMENT SURFACES.
4.	IT IS THE CONTRACTOR'S RESPONSIBILITY THAT THE CONTRACTOR REVIEW THE INTENDED CONSTRUCTION TO ENSURE SAME IS CONSISTENT WITH THE LOCAL BUILDING CODE PRIOR TO COMMENCING CONSTRUCTION.
5.	IN ADDITION TO THE ABOVE, THE CONTRACTOR MUST ALSO ENSURE THAT ALL ACCESSIBLE COMPONENTS AND ACCESSIBLE ROUTES ARE CONSTRUCTED TO MEET THE ACCESSIBLE GUIDELINES AND STANDARDS WITH THE MASSACHUSETTS ARCHITECTURAL ACCESS BOARD REGULATIONS SET OUT. THE CONTRACTOR MUST IMMEDIATELY NOTIFY THE ENGINEER OF RECORD, IN WRITING, OF ANY DISCREPANCIES BETWEEN THE "AMERICANS WITH DISABILITIES ACT" (ADA) CODE AND STATE BUILDING CODE AS IT RELATES TO ANY ACCESSIBLE IMPROVEMENTS BEING CONSTRUCTED PRIOR TO COMMENCING THE WORK.

ABBREVIATIONS		TYPICAL LINE TYPE LEGEND	
KEY	DESCRIPTION	PROPERTY LINE	EXISTING PROPOSED
AG / ABVG	ABOVE GROUND	ADJACENT PROPERTY LINE	EXISTING PROPOSED
ARCH	ARCHITECT	RIGHT-OF-WAY LINE	EXISTING
BC	BACK OF CURB	SETBACK OR BUFFER	EXISTING PROPOSED
BCC	BITUMINOUS CONCRETE CURB	EASEMENT LINE	EXISTING PROPOSED
BM	BENCHMARK	WETLAND BOUNDARY	EXISTING PROPOSED
BOC	BOTTOM OF CURB	WETLAND BUFFER	EXISTING PROPOSED
BW	BOTTOM OF WALL	WATER WAY BOUNDARY	EXISTING PROPOSED
BLDG	BUILDING	WATERWAY BUFFER	EXISTING PROPOSED
CC	CONCRETE CURB	WETLAND OR WATERWAY PLAC	EXISTING
CB	CAPE OF OCEAN BERM	RIGHT-OF-WAY CENTER OR BASE LINE	EXISTING PROPOSED
CONC.	CONCRETE	APPROX. LIMIT OF WORK OR DISTURBANCE	EXISTING PROPOSED
DEC	DECORATIVE	APPROX. SAWCUT LINE	EXISTING PROPOSED
D	DEGREE	TREE LINE	EXISTING PROPOSED
DEP	DEPRESSED	SURFACE OR SUBSURFACE BASIN	EXISTING PROPOSED
D / DIA	DIAMETER	OVERHEAD WIRES	EXISTING PROPOSED
DMH	DRAIN MANHOLE	CURBING	EXISTING PROPOSED
DPI	DUCTILE IRON PIPE	FENCE OR RAILING	EXISTING PROPOSED
ECC	EXTRUDED CONCRETE CURB	RETAINING WALL	EXISTING PROPOSED
EOP	EDGE OF PAVEMENT	CONTOURS	EXISTING PROPOSED
ELEV	ELEVATION	SWALE	EXISTING PROPOSED
EXIST.	EXISTING	BERM	EXISTING PROPOSED
FF	FINISH FLOOR	RIDGE	EXISTING PROPOSED
FFE	FINISH FLOOR ELEVATION	DRAIN PIPE	EXISTING PROPOSED
GC	GENERAL CONTRACTOR	SEWER PIPE	EXISTING PROPOSED
GRATE	GRATE	SEWER FORCE MAIN	EXISTING PROPOSED
HDPE	HIGH DENSITY POLYETHYLENE PIPE	ELECTRIC	EXISTING PROPOSED
HP	HIGH POINT	TELECOMMUNICATIONS	EXISTING PROPOSED
INT	INTERSECTION	CABLE TV	EXISTING PROPOSED
INV	INVERT	GAS	EXISTING PROPOSED
L.S.A.	LANDSCAPE AREA	WATER	EXISTING PROPOSED
LDW	LIMIT OF DISTURBANCE		
LOW	LIMIT OF WORK		
LF	LINEAR FOOT / FEET		
LP	LOW POINT		
MAX	MAXIMUM		
MEP	MECHANICAL, ELECTRICAL, PLUMBING		
ME	MEET OR MATCH EXISTING		
MIN	MINIMUM		
No. / #	NUMBER		
±	PLUS OR MINUS		
P	POINT OF CURVATURE		
PI	POINT OF INTERSECTION		
PT	POINT OF TANGENCY		
PVI	POINT OF VERTICAL INTERSECTION		
PVC	POLYVINYL CHLORIDE PIPE		
PROP.	PROPOSED		
R	RADIUS OR RADII		
REINFORCED	REINFORCED CONCRETE PIPE		
R.O.W.	RIGHT-OF-WAY		
SAH	SANITARY		
SEW	SEWER MANHOLE		
S	SLOPE		
SG	SQUARE FOOT		
SGC	SLOPED GRANITE CURB		
STA	STATION		
STM	STORM		
TBR	TO BE REMOVED		
TBR/R	TO BE REMOVED AND REPLACED		
TC	TOP OF CURB		
TF	TOP OF WALL		
TP	TREE PROTECTION FENCE		
TRANS	TRANSITION		
TYPICAL	TYPICAL		
UG / UNGD	UNDERGROUND		

[illegible]



BOHLER
SITE CIVIL AND CONSULTING ENGINEERING
PROGRAM MANAGEMENT
LANDSCAPE ARCHITECTURE
SUSTAINABLE DESIGN
PERMITTING SERVICES
TRANSPORTATION SERVICES

REVISIONS

REV	DATE	COMMENT	DRAWN BY	CHECKED BY



ALWAYS CALL 811
It's fast. It's free. It's the law.

PRELIMINARY

THIS DRAWING IS INTENDED FOR MUNICIPAL AND/OR AGENCY REVIEW AND APPROVAL. IT IS NOT INTENDED AS A CONSTRUCTION DOCUMENT UNLESS INDICATED OTHERWISE.

PROJECT No.: MAA220242-00
DRAWN BY: CPB
CHECKED BY: LMD
DATE: 04/05/2023
CAD ID: MAA220242-00-SFPD-0C

PROJECT:

PROPOSED SITE PLAN DOCUMENTS

FOR

POND STREET ACQUISITIONS LLC

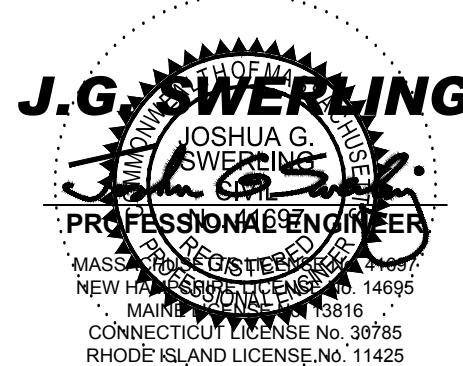
PROPOSED MIXED USE DEVELOPMENT

MAP: 61 BLOCK: 639 LOTS: 4 & 7
505 POND STREET & 1537 MAIN STREET,
CITY OF WEYMOUTH,
NORFOLK COUNTY,
MASSACHUSETTS

BOHLER

352 TURNPIKE ROAD
SOUTHBOROUGH, MA 01772
Phone: (508) 480-9900

www.BohlerEngineering.com



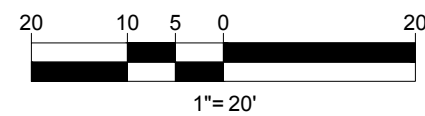
SHEET TITLE:

DEMOLITION PLAN

SHEET NUMBER:

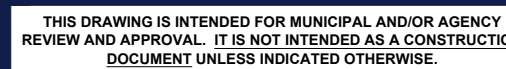
C-201

ORG. DATE - 04/05/2023



1. **APPLICANT:**
POND STREET ACQUISITIONS LLC
P.O. BOX 963
PORTLAND, ME 04104
2. **OWNER:**
POND STREET ACQUISITIONS LLC
P.O. BOX 963
PORTLAND, ME 04104
3. **PARCEL:**
MAP #61, BLOCK #639, LOTS #4 & #7
505 POND STREET & 1537 MAIN STREET
CITY OF WEYMOUTH
NORFOLK COUNTY, MASSACHUSETTS

- (1) LOT COVERAGE REFERS TO THE RELATIONSHIP BETWEEN LOT AREA AND THE AREA OF GROUND COVERAGE OF ALL BUILDINGS.
- (2) THE FRONT YARD AREA COMPRISING THE MINIMUM REQUIRED FRONT YARD SETBACK DEPTH AND MEASURED ACROSS THE LOT WIDTH SHALL BE LANDSCAPED, EXCEPT FOR REQUIRED ACCESS DRIVEWAYS AND WALKWAYS. THE MINIMUM LANDSCAPING DEPTH MAY BE REDUCED TO 15-FT IN THE B-1 ZONING DISTRICT IF A LANDSCAPING PLAN IS APPROVED BY THE INSPECTOR OF BUILDINGS.
- (3) ABUTTING THE R-1 DISTRICT

[illegible]

PROJECT:

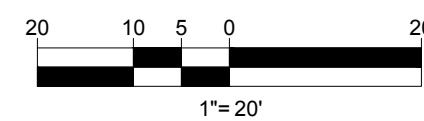
- FOF

J.G. SWERLING
 JOSHUA G. SWERLING
 CIVIL
 PROFESSIONAL ENGINEER
 REGISTERED
 MASSACHUSETTS
 NEW HAVEN, CONNECTICUT 06511
 MAINE 03816
 CONNECTICUT LICENSE No. 36785
 RHODE ISLAND LICENSE No. 11425

SHEET NUMBER

C-301

ORG. DATE - 04/05/2023

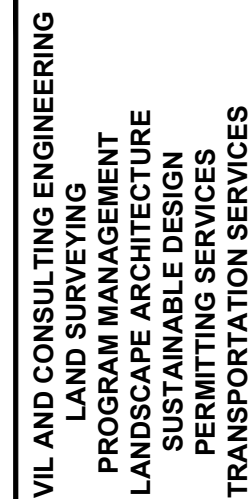


SHEET TITLE:

SHEET NUMBER

C-401

ORG. DATE - 04/05/2023



REVISIONS

[illegible]

ALWAYS CALL 811
It's fast. It's free. It's the law.

PRELIMINARY

THIS DRAWING IS INTENDED FOR MUNICIPAL AND/OR AGENCY
REVIEW AND APPROVAL. IT IS NOT INTENDED AS A CONSTRUCTION
DOCUMENT UNLESS INDICATED OTHERWISE.

PROJECT No.:	MAA220242.00
DRAWN BY:	CPB
CHECKED BY:	LMD
DATE:	04/05/2023
CAD I.D.:	MAA220242.00-SPPD-00

PROJECT:

**PROPOSED SITE
PLAN DOCUMENTS**

— FOR

**POND STREET
ACQUISITIONS LLC**

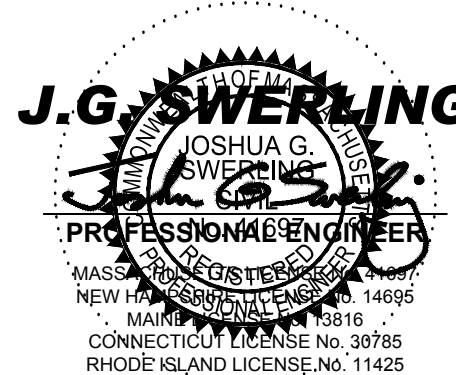
PROPOSED USE DEVELOPMENT

MAP: 61 BLOCK: 639 LOTS: 4 & 7
505 POND STREET & 1537 MAIN
STREET,
CITY OF WEYMOUTH,
NORFOLK COUNTY,
MASSACHUSETTS

BOHLER//

352 TURNPIKE ROAD
SOUTHBOROUGH, MA 01772
Phone: (508) 480-9900

www.BohlerEngineering.com



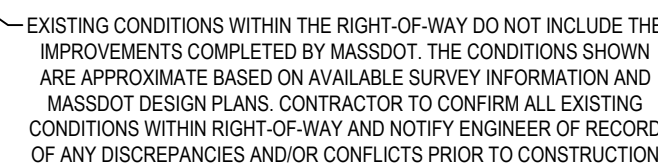
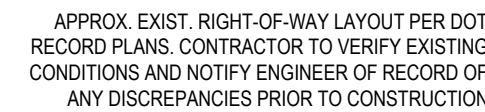
SHEET TITLE:

GRADING & DRAINAGE PLAN

SHEET NUMBER

C-401

ORG. DATE - 04/05/2023



20 10 5 0 20

1"= 20'

[illegible]

THIS DRAWING IS INTENDED FOR MUNICIPAL AND/OR AGENCY
REVIEW AND APPROVAL. IT IS NOT INTENDED AS A CONSTRUCTION
DOCUMENT UNLESS INDICATED OTHERWISE.

PROJECT:

- FOR -

**MAP: 61 BLOCK: 639 LOTS: 4 & 7
505 POND STREET & 1537 MAIN
STREET,
CITY OF WEYMOUTH,
NORFOLK COUNTY,
MASSACHUSETTS**

352 TURNPIKE ROAD
SOUTHBOROUGH, MA 01772
Phone: (508) 480-9900

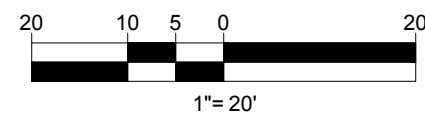
www.BohlerEngineering.com



SHEET NUMBER:

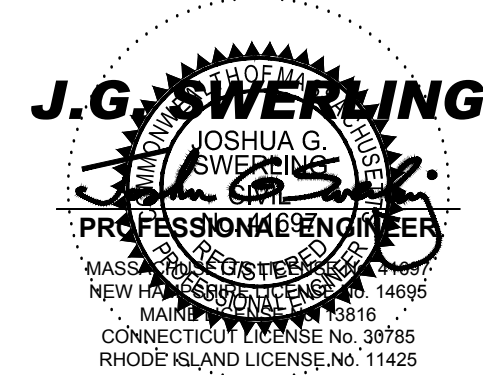
C-501

ORG. DATE - 04/05/2023



C-601

ORG. DATE - 04/05/2023



SHEET TITLE

SOIL EROSION & SEDIMENT CONTROL PLAN

1. ALL SEDIMENT AND EROSION CONTROL MEASURES SHALL BE DONE AS SET FORTH IN THE MOST CURRENT STATE SEDIMENT AND EROSION CONTROL MANUAL.
2. THOSE AREAS UNDERGOING ACTUAL CONSTRUCTION WILL BE LEFT IN AN UNTREATED OR UNVEGETATED CONDITION FOR A MINIMUM TIME. AREAS SHALL BE PERMANENTLY STABILIZED IN ACCORDANCE WITH LOCAL, STATE, AND FEDERAL REQUIREMENTS. AT TEMPORARY AREAS SHALL BE PERMANENTLY STABILIZED ACCORDING TO THE CURRENT EDITION OF THE STORMWATER POLLUTION PREVENTION PLAN (SWPPP), OR IN THE ABSENCE OF A SWPPP, THEY SHALL BE PERMANENTLY STABILIZED WITHIN 14 DAYS OF FINAL GRADING AND TEMPORARILY STABILIZED WITHIN 30 DAYS OF INITIAL DISTURBANCE OF THE SOIL. IF THE DISTURBANCE IS WITHIN 100 FEET OF A STREAM OR POND, THE AREA SHALL BE STABILIZED WITHIN 7 DAYS OR PRIOR TO ANY DISTURBANCE (THIS INCLUDES MULCHING).
3. SEDIMENT BARRIERS (SILT FENCE, STRAW BARRIERS, ETC.) SHOULD BE INSTALLED PRIOR TO ANY SOIL DISTURBANCE OF THE CONTRIBUTING DRAINAGE AREA ABOVE THEM. MULCH NETTING SHALL BE USED TO ANCHOR MULCH IN ALL AREAS WITH SLOPES GREATER THAN 8%.
4. INSTALL SILTATION BARRIER AT TOE OF SLOPE TO FILTER SILT FROM RUNOFF. SEE SILTATION BARRIER DETAILS FOR PROPER INSTALLATION. SILTATION BARRIER WILL REMAIN IN PLACE PER NOTE #5.
5. ALL EROSION CONTROL STRUCTURES WILL BE INSPECTED, REPLACED AND/OR REPAIRED EVERY 7 DAYS AND IMMEDIATELY FOLLOWING ANY SIGNIFICANT RAINFALL OR SNOW MELT OR WHEN NO LONGER SERVICEABLE DUE TO SEDIMENT ACCUMULATION OR EROSION. SEDIMENT DEPOSITS SHOULD BE REMOVED AFTER EACH STORM EVENT. THEY MUST BE REMOVED WHEN DEPOSITS REACH APPROXIMATELY ONE HALF THE HEIGHT OF THE BARRIER. SEDIMENT CONTROL DEVICES SHALL REMAIN IN PLACE AND BE MAINTAINED BY THE CONTRACTOR UNTIL AREAS UPSLOPE ARE PERMANENTLY STABILIZED. FOR SEDIMENT CONTROL DEVICES THAT ARE WITHIN AREAS SUBJECT TO CONSERVATION COMMISSION JURISDICTION, THE DEVICES SHALL REMAIN IN PLACE AND BE REMOVED IN ACCORDANCE WITH THE ORDER OF CONDITIONS.
6. NO SLOPES, EITHER PERMANENT OR TEMPORARY, SHALL BE STEEPER THAN TWO TO ONE (2:1) UNLESS OTHERWISE INDICATED ON THE PLANS. SLOPE PROTECTION FOR SLOPES GREATER THAN 2:1 SHALL BE DESIGNED BY A GEOTECHNICAL ENGINEER.
7. IF FINAL SEEDING OF THE DISTURBED AREAS IS NOT COMPLETED 45 DAYS PRIOR TO THE FIRST KILLING FROST, USE TEMPORARY MULCH (DORMANT SEEDING MAY BE ATTEMPTED AS WELL) TO PROTECT THE SITE AND DELAY SEEDING UNTIL THE NEXT RECOMMENDED SEEDING PERIOD.
8. TEMPORARY SEEDING OF DISTURBED AREAS THAT HAVE NOT BEEN FINAL GRADED SHALL BE COMPLETED 45 DAYS PRIOR TO THE FIRST KILLING FROST TO PROTECT FROM SPRING RUNOFF PROBLEMS.
9. DURING THE CONSTRUCTION PHASE, INTERCEPTED SEDIMENT SHALL BE REMOVED AND DISPOSED OF IN ACCORDANCE WITH LOCAL, STATE, AND FEDERAL STANDARDS.
10. REVEGETATION MEASURES WILL COMMENCE UPON COMPLETION OF CONSTRUCTION EXCEPT AS NOTED ABOVE. ALL DISTURBED AREAS SHALL BE OTHERWISE PROTECTED BY GRADING, SMOOTHING, AND PREPARED FOR FINAL SEEDING AS FOLLOWS:
 - 10.1. SIX INCHES, OR DEPTH SPECIFIED ON THE LANDSCAPE PLAN, OF SOIL WILL BE SPREAD OVER DISTURBED AREAS AND SMOOTHED TO A UNIFORM SURFACE.
 - 10.2. APPLY LIMESTONE AND FERTILIZER ACCORDING TO SOIL TEST. IF SOIL TESTING IS NOT FEASIBLE ON SMALL OR VARIABLE SITES, OR WHERE TIMING IS CRITICAL, FERTILIZER MAY BE APPLIED AT THE RATE OF 80 LB PER ACRE OR 18.4 LB PER 1,000 SF USING 10-20-20 OR EQUIVALENT. APPLY GROUND LIMESTONE (EQUIVALENT TO 50% CALCIUM PLUS MAGNESIUM OXIDE) AT A RATE OF 3 TONS PER ACRE (138 LB PER 1,000 SF).
 - 10.3. FOLLOWING SEED BED PREPARATION, DITCHES AND BACK SLOPES WILL BE SEED TO A MIXTURE OF 4% CREEPING RED FESCUE, 5% RED FESCUE, 10% PERENNIAL RYEGRASS, 10% PERENNIAL BROMEGRASS, 10% PERENNIAL BLUEGRASS, 4% CREEPING RED FESCUE, AND 12% PERENNIAL RYEGRASS. SEEDING RATE IS 1.03 LBS PER 1,000 SF LAWN. QUALITY SOIL MAY BE SUBSTITUTED FOR SEED WHERE SLOPES DO NOT EXCEED 2:1, SO ON SLOPES STEEPER THAN 3:1 SHOULD BE PEGGED.
 - 10.4. STRAW MULCH AT THE RATE OF 70-90 LBS PER 1,000 SF, A HYDRO-APPLICATION OF WOOD OR PAPER FIBER SHALL BE APPLIED FOLLOWING SEEDING. A SUITABLE NON-TOXIC BINDER WILL BE USED ON STRAW MULCH FOR WIND CONTROL.
11. TEMPORARY EROSION CONTROL MEASURES SHALL BE REMOVED ONCE THE SITE IS 70% STABILIZED. FOR EROSION CONTROL MEASURES THAT ARE WITHIN AREAS SUBJECT TO CONSERVATION COMMISSION JURISDICTION, THE MEASURES SHALL REMAIN IN PLACE AND BE REMOVED IN ACCORDANCE WITH THE ORDER OF CONDITIONS.
12. WETLANDS WILL BE PROTECTED WITH BARRIERS CONSISTING OF STRAW BALES, COMPOST TUBES, SILT FENCE OR A COMBINATION THEREOF.
13. ALL AREAS WITHIN 100 FEET OF A FLAGGED WETLAND OR STREAM SHALL HAVE AN EXPOSURE WINDOW OF NOT MORE THAN 7 DAYS.
14. ALL AREAS WITHIN 100 FEET OF A FLAGGED WETLAND OR STREAM SHALL FOLLOW APPROPRIATE EROSION CONTROL MEASURES PRIOR TO EACH STORM IF NOT BEING ACTIVELY WORKED.

* A HYDRO APPLICATION OF WOOD OR PAPER FIBER MAY BE APPLIED FOLLOWING SEEDING. A SUITABLE NON-TOXIC BINDER SHALL BE USED TO ADDITIONAL WIND CONTROL.

* MULCH ANCHORING: ANCHOR MULCH WITH PEG AND TWINE (1 SQ. YD/BLOCK); MULCH NETTING (AS PER MANUFACTURER); WOOD CELLULOSE FIBER (750 LBS/ACRE); CHEMICAL TACK (AS PER MANUFACTURER'S SPECIFICATIONS); USE OF A SERRATED STRAIGHT DISK. WETTING FOR SMALL AREAS AND ROAD DITCHES MAY BE PERMITTED.

- PROPOSED LOCATIONS OF SURFACE STORMWATER MANAGEMENT BASINS CAN BE UTILIZED AS A TEMPORARY SEDIMENT TRAP DURING CONSTRUCTION. SEDIMENT TRAPS SHALL BE SIZED AND CONSTRUCTED IN ACCORDANCE WITH ALL LOCAL, STATE, AND FEDERAL REQUIREMENTS.
- 15.1. TEMPORARY SEDIMENT TRAPS SHALL BE SIZED PER THE CURRENT EDITION OF THE "MASSACHUSETTS EROSION AND SEDIMENT CONTROL GUIDELINES FOR URBAN AND SUBURBAN AREAS" AND PROVIDE A MINIMUM OF 1,800 CF PER ACRE OF TRIBUTARY AREA WITH A MAXIMUM TRIBUTARY AREA OF 5 ACRES, MAINTAIN A 2:1 LENGTH TO WIDTH RATIO, AND NOT EXCEED 5 FT IN HEIGHT. UPON SITE STABILIZATION, ACCUMULATED SEDIMENT SHALL BE REMOVED AND THE TEMPORARY SEDIMENT TRAP DECAVATED TO ORIGINAL GRADE. AFTER SITE STABILIZATION, TRAPS SHALL THEN BE SCARPED TO PREVENT COMPACTION AND PROMOTE INFILTRATION, AND GRADED AND STABILIZED IN ACCORDANCE WITH THE GRADING AND LANDSCAPE PLANS.
16. STOCKPILING OF MATERIALS (DIRT, WOOD, CONSTRUCTION MATERIALS, ETC.) MUST REMAIN COVERED AT ALL TIMES TO MINIMIZE ANY DUST PROBLEMS THAT MAY OCCUR WITH ADJACENT PROPERTIES AND TO PROVIDE MAXIMUM PROTECTION AGAINST EROSION RUNOFF.
17. EXISTING CHUTE BASIN STRUCTURES SHALL BE PROTECTED UNTIL SUCH TIME AS THEY ARE REMOVED.
18. THE CONTRACTOR MUST PERFORM DEWATERING (IF REQUIRED), IN ACCORDANCE WITH STATE AND LOCAL REGULATIONS, IT IS THE CONTRACTOR'S RESPONSIBILITY TO OBTAIN AND PAY FOR THE COSTS ASSOCIATED WITH ANY AND ALL NECESSARY DISCHARGE PERMITS ASSOCIATED WITH SAME.
19. THE CONTRACTOR MUST LOCATE CONSTRUCTION WASTE MATERIAL STORAGE AREAS TO MINIMIZE EXPOSURE TO STORMWATER. THE CONTRACTOR MUST IMMEDIATELY PLACE CONSTRUCTION WASTE IN ON-SITE STORAGE CONTAINERS UNTIL THAT CONSTRUCTION WASTE IS READY FOR OFF-SITE DISPOSAL. THE CONTRACTOR MUST MAINTAIN SPILL PREVENTION AND RESPONSE PROCEDURES AND MAKE SUCH PROCEDURES CONTINUOUSLY AVAILABLE ON-SITE FOR USE BY THE CONTRACTOR'S EMPLOYEES WHO MUST BE PROPERLY TRAINED IN THE APPLICATION OF SPILL PREVENTION AND RESPONSE PROCEDURES.
20. EROSION CONTROL NOTES DURING WINTER CONSTRUCTION
21. WINTER CONSTRUCTION PERIOD: NOVEMBER 1 THROUGH APRIL 15.
22. WINTER EXCAVATION AND EARTHWORK SHALL BE DONE SUCH THAT THE AMOUNT OF AREA OPEN AT ONE TIME IS MINIMIZED TO THE MAXIMUM EXTENT PRACTICABLE AND IN CONFORMANCE WITH THE STORMWATER POLLUTION PREVENTION PLAN SUCH THAT ADEQUATE PROVISIONS ARE EMPLOYED TO CONTROL STORMWATER RUNOFF.
23. CONTINUATION OF EARTHWORK OPERATION ON ADDITIONAL AREAS SHALL NOT BEGIN UNTIL THE EXPOSED SOIL SURFACE ON THE AREA BEING WORKED HAS BEEN STABILIZED SUCH THAT NO LARGER AREA OF THE SITE IS WITHOUT EROSION CONTROL PROTECTION LISTED IN THE SPECIFICATIONS.
24. AN AREA SHALL BE CONSIDERED TO HAVE BEEN TEMPORARILY STABILIZED WHEN EXPOSED SURFACES HAVE BEEN EITHER MULCHED WITH STRAW OR STRAW AT A RATE OF 100 LB. PER 1,000 SQUARE FEET (WITH OR WITHOUT SEEDING) OR DORMANT SEEDS, MULCHED AND ADEQUATELY ANCHORED BY AN APPROVED ANCHORING TECHNIQUE.
25. FOR AREAS WHERE CONSTRUCTION ACTIVITIES HAVE CEASED FOR A PERIOD EXCEEDING 14 DAYS BETWEEN THE DATES OF NOVEMBER 1ST AND APRIL 15TH, DORM SEED WILL NOT BE REQUIRED. THE SLOPES SHALL BE FINE GRADED AND EITHER PROTECTED WITH MULCH OR TEMPORARILY SEEDED. IF THE EXPOSED AREA HAS BEEN LOAMED, FINE GRADED AND IS SMOOTH THEN THE AREA MAY BE DORMANT SEEDDED AT A RATE OF 200-300% HIGHER THAN SPECIFIED FOR PERMANENT SEED AND THEN MULCHED AS APPLICABLE. SLOPES SHALL NOT BE LEFT UNSTABILIZED OVER THE WINTER OR IN AREAS WHERE WORK HAS CEASED FOR MORE THAN 14 DAYS. MULCHING SHALL BE REQUIRED FOR ALL AREAS WHERE OTHER CONDITIONS ALLOW DITCHES TO BE FINISHED WITH THE PERMANENT SURFACE TREATMENT. EROSION SHALL BE CONTROLLED BY THE INSTALLATION OF SEDIMENT BARRIERS OR STONE CHECK DAMS IN ACCORDANCE WITH THE STANDARD DETAILS.
26. MULCHING REQUIREMENTS:
 - 26.1. BETWEEN THE DATES OF NOVEMBER 1ST AND APRIL 15TH ALL MULCH SHALL BE ANCHORED BY EITHER PEG LINE, MULCH NETTING OR WOOD CELLULOSE FIBER.
 - 26.2. MULCH NETTING SHALL BE USED TO ANCHOR MULCH IN ALL DRAINAGE WAYS WITH A SLOPE GREATER THAN 3% FOR SLOPE PROTECTION TO DIRECT FLOW OF WATER TO OTHER AREAS WITH A SLOPE GREATER THAN 8%.
 - 26.3. ALL MULCH NETTING SHALL BE USED TO ANCHOR MULCH IN ALL AREAS WITH SLOPES GREATER THAN 1% AFTER OCTOBER 1ST. THE SAME APPLIES FOR ALL SLOPES GREATER THAN 8%.
27. ALL DISTURBED AREAS SHALL BE STABILIZED IN ACCORDANCE WITH THE STORMWATER PREVENTION PLAN.
28. DURING THE WINTER CONSTRUCTION PERIOD ALL SNOW SHALL BE REMOVED FROM AREAS OF SEEDING AND MULCHING PRIOR TO PLACEMENT.

1. THE GENERAL NOTES MUST BE INCLUDED AS PART OF THIS ENTIRE DOCUMENT PACKAGE AND ARE PART OF THE CONTRACT DOCUMENTS. THE GENERAL NOTES ARE REFERENCED HEREIN, AND THE CONTRACTOR MUST REFER TO THEM AND FULLY COMPLY WITH THESE NOTES, IN THEIR ENTIRETY. THE CONTRACTOR MUST BE FAMILIAR WITH ALL OF THE GENERAL NOTES AND ALL OF THE PLANS' SPECIFIC NOTES.
2. EROSION CONTROL MEASURES MUST CONFORM TO THE STATE, LOCAL, AND FEDERAL GUIDELINES FOR URBAN EROSION AND SEDIMENT CONTROL UNLESS OTHERWISE NOTED, OR UNLESS THE PROFESSIONAL OF RECORD CLEARLY AND SPECIFICALLY, IN WRITING, DICTATES OTHERWISE. INSTALLATION OF EROSION CONTROL, CLEARING, AND SITE WORK MUST BE PERFORMED EXACTLY AS INDICATED IN THE EROSION CONTROL INSTALLATION NOTES.
3. THE DISTURBED LAND AREA OF THIS SITE IS APPROXIMATELY 2.17 ACRES.
4. THE FOLLOWING EROSION CONTROL MEASURES ARE PROPOSED FOR THIS SITE:
 - A. STABILIZED CONSTRUCTION ENTRANCE/EXIT - A TEMPORARY GRAVEL CONSTRUCTION ENTRANCE/EXIT IS TO BE INSTALLED AT THE DESIGNATED LOCATION SHOWN ON THE PLAN. THIS AREA MUST BE GRADED SO THAT RUNOFF WATER WILL BE RETAINED ON SITE.
 - B. SEDIMENT FENCE - INSTALL SILT FENCE(S) AND/OR SILT SOCK AROUND ALL OF THE DOWNSLOPE PERIMETERS OF THE SITE, TEMPORARY FILL AND SOIL STOCKPILES.
 - C. INSTALL FILTER FABRIC DROP INLET PROTECTION AROUND EACH DRAINAGE INLET AS DRAINAGE STRUCTURES ARE INSTALLED TO REDUCE THE QUANTITY OF SEDIMENT. INSTALL TEMPORARY INLET PROTECTION ON INLETS DOWNSLOPE FROM DISTURBANCE, WHICH MAY BE BEYOND THE LIMITS OF DISTURBED AREA.
 5. INSTALLATION OF EROSION CONTROL DEVICES MUST BE IN ACCORDANCE WITH ALL OF THE MANUFACTURER'S RECOMMENDATIONS.
 6. THE CONTRACTOR MUST INSPECT EROSION CONTROL MEASURES WEEKLY. THE CONTRACTOR MUST REMOVE ANY SILT DEPOSITS GREATER THAN 6 INCHES OR HALF THE EROSION CONTROL BARRIER'S HEIGHT COLLECTED ON THE FILTER FABRIC AND/OR SILT SOCK BARRIERS AND EXCAVATE AND REMOVE ANY SILT DEPOSITS FROM THE INLET PROTECTION.
 7. THE CONTRACTOR MUST APPLY TEMPORARY SEED AND MULCH TO ALL DISTURBED AREAS THAT WILL NOT BE BROUGHT TO FINISHED GRADE AND VEGETATED WITHIN 7 DAYS. WHEN AREAS ARE DISTURBED AFTER THE GROWING SEASON, THE CONTRACTOR MUST STABILIZE SAME WITH GEOTEXTILE FABRIC AND MAINTAIN SAME IN STRICT ACCORDANCE WITH BEST MANAGEMENT PRACTICES.
 8. THE CONTRACTOR MUST INSTALL ADDITIONAL EROSION CONTROL MEASURES IF THE PROFESSIONAL OF RECORD SO REQUIRES, TO PREVENT ANY INCLUDING THE INCIDENTAL DISCHARGE OF SILT-LADEN RUNOFF FROM EXISTING THE SITE.
 9. THE CONTRACTOR MUST BE RESPONSIBLE FOR INSPECTING AND MAINTAINING ALL EROSION CONTROL MEASURES ON THE SITE UNTIL PERMANENT PAVING AND TURF/LANDSCAPING IS ESTABLISHED. THE COSTS OF INSTALLING AND MAINTAINING THE EROSION CONTROL MEASURES MUST BE INCLUDED IN THE BID PRICE FOR THE SITE WORK AND THE CONTRACTOR IS RESPONSIBLE FOR ALL SUCH COSTS.
 10. THE CONTRACTOR MUST CONTINUE TO MAINTAIN ALL EROSION CONTROL MEASURES UNTIL THE COMPLETION OF CONSTRUCTION AND THE ESTABLISHMENT OF VEGETATION.
 11. THE CONTRACTOR MUST REMOVE EROSION CONTROL MEASURES, SILT AND DEBRIS AFTER ESTABLISHING PERMANENT VEGETATION COVER OR OTHER INSTALLING A DIFFERENT, SPECIFIED METHOD OF STABILIZATION.
 12. THIS PLAN REPRESENTS THE MINIMUM LEVEL OF IMPLEMENTATION OF TEMPORARY EROSION AND SEDIMENTATION CONTROL FACILITIES, MEASURES AND STRUCTURES. ADDITIONAL FACILITIES, MEASURES AND STRUCTURES MUST BE INSTALLED WHERE NECESSARY TO COMPLY WITH ALL APPLICABLE CODES, ORDINANCES AND/OR ANY OTHER APPLICABLE REGULATORY REQUIREMENTS, INCLUDING ANY LOCAL DISCHARGE OR SILT-LADEN RUNOFF FROM EXISTING THE SITE.
 13. THE CONTRACTOR MUST PROTECT ALL EXISTING TREES AND SHRUBS. THE CONTRACTOR MUST REFER TO THE LANDSCAPE AND/OR DEMOLITION PLAN(S) FOR TREE PROTECTION, FENCE LOCATIONS AND DETAILS.
 14. THE CONTRACTOR MUST REFER TO GRADING PLANS FOR ADDITIONAL INFORMATION.
 15. THE CONTRACTOR MUST CLEAN EXISTING AND PROPOSED DRAINAGE STRUCTURES AND INTERCONNECTING PIPES ON OR OFF-SITE AS THE JURISDICTIONAL AGENCY REQUIRES, BOTH AT THE TIME OF SITE STABILIZATION AND AT END OF PROJECT.
 16. SOIL EROSION CONTROL MEASURES MUST BE ADJUSTED OR RELOCATED BY THE CONTRACTOR AS IDENTIFIED DURING SITE OBSERVATION IN ORDER TO MAINTAIN PROTECTION OF EXISTING AND PROPOSED VEGETATION.
 17. THE CONTRACTOR MUST IDENTIFY, ON THE PLAN, THE LOCATION OF WASTE CONTAINERS, FUEL STORAGE TANKS, CONCRETE WASHOUT AREAS AND ANY OTHER LOCATIONS WHERE HAZARDOUS MATERIALS ARE STORED.

NOTES:

1. EXCAVATE A 6"x6" TRENCH ALONG THE LINE OF EROSION CONTROL OF THE SITE.
2. UNROLL SILTATION FENCE AND POSITION THE POSTS AGAINST THE BACK (DOWNSTREAM) WALL OF THE TRENCH (NET SIDE AWAY FROM FLOW DIRECTION).
3. DRIVE THE POST INTO THE GROUND UNTIL THE NETTING IS LAYING ACROSS THE TRENCH BOTTOM.
4. LAY THE TOE-IN FLAP OF THE FABRIC ONTO THE UNDISTURBED BOTTOM OF THE TRENCH. BACKFILL ALSO BE ACCOMPLISHED BY LAYING FABRIC FLAP ON UNDISTURBED GROUND AND PILING & TAMPING FILL AT THE BASE.

DETAIL OF POST ATTACHMENT (PRE-ASSEMBLED PRIOR TO INSTALLATION)

WOOD OR PLASTIC SLAT STAPLED THROUGH FABRIC TO POST

1-1/2" x 1-1/2" POST

FABRIC

TOE-IN METHODS

PERSPECTIVE OF FENCE

BACKFILL

- INSTALLATION OF STABILIZED CONSTRUCTION ENTRANCE/EXIT (AS SHOWN)
- INSTALLATION OF EROSION CONTROL BARRIER (STRAW BALES AND SILT FENCE) (AS SHOWN)
- INSTALLATION OF INLET PROTECTION IN STREET (AS SHOWN)
- DEMOLITION OF EXISTING SITE STRUCTURES (SEE DEMOLITION PLAN)
- DEMOLITION OF EXISTING SITE PAVEMENT AND AMENITIES (SEE DEMOLITION PLAN)
- CLEARING AND GRUBBING
- INSTALLATION OF TEMPORARY SWALES AND SEDIMENT BASINS
- EARTHWORK AND EXCAVATION/FILLING AS NECESSARY
- CONSTRUCTION OF UTILITIES
- STABILIZE PERMANENT LAWN AREAS AND SLOPES WITH TEMPORARY SEEDING
- INSTALLATION OF INLET PROTECTION OF ON-SITE UTILITIES (AS SHOWN)
- CONSTRUCTION OF BUILDINGS
- CONSTRUCTION OF ALL CURBING AND LANDSCAPE ISLANDS AS INDICATED ON THE PLANS
- SPREAD TOPSOIL ON SLOPED AREAS AND SEED AND MULCH
- FINAL GRADING OF ALL SLOPED AREAS
- PLACE 6" TOPSOIL ON SLOPES AFTER FINAL GRADING COMPLETED. FERTILIZE, SEED, AND MULCH MIXTURE TO BE INSTALLED AS REQUIRED.
- REMOVAL OF THE TEMPORARY SEDIMENT BASINS
- PAVE PARKING LOT
- LANDSCAPING PER LANDSCAPING PLAN

SEE CHART 1

PUBLIC R.O.W.

EXISTING GROUND

2-1/2' CLEAN STONE

6" MIN

PROFILE

PROVIDE APPROPRIATE TRANSITION BETWEEN STABILIZED CONSTRUCTION ENTRANCE AND PUBLIC R.O.W.

SEE CHART 1

25'R

EXISTING GROUND

PUBLIC RIGHT OF WAY

25'R

PLAN VIEW

PERCENT SLOPE OF ROADWAY	LENGTH OF STONE REQUIRED	
	COARSE GRAINED SOILS	FINE GRAINED SOILS
0 TO 2%	50 FT	100 FT
2% TO 5%	100 FT	200 FT
>5%	ENTIRE ENTRANCE STABILIZED WITH FABC BASE COURSE (1)	

(1) AS PRESCRIBED BY LOCAL ORDINANCE OR OTHER GOVERNING AUTHORITY.

CHART 1

1. PREPARE SOIL BEFORE INSTALLING BLANKETS, INCLUDING ANY NECESSARY APPLICATION OF LIMES, FERTILIZER, AND SEEDS.

2. BEGIN AT THE TOP OF THE SLOPE BY ANCHORING THE BLANKET IN A 6" DEEP X 6" WIDE TRENCH (WITH APPROPRIATELY 12" OF BLANKET EXTENDED BEYOND THE UP-SLOPE PORTION OF THE TRENCH AS SHOWN IN DETAIL 2). ANCHOR THE BLANKET WITH A ROW OF STAPLES/STAKES APPROXIMATELY 12" APART IN THE BOTTOM OF THE TRENCH. BACKFILL AND COMPACT THE TRENCH AFTER STAPLING. APPLY SEED TO COMPACTED SOIL AND FOLD REMAINING 12" PORTION OF BLANKET BACK OVER SEED AND COMPACTED SOIL. SECURE BLANKET OVER COMPACTED SOIL WITH A ROW OF STAPLES/STAKES SPACED APPROXIMATELY 12" APART ACROSS THE WIDTH OF THE BLANKET.

3. ROLL THE BLANKETS (A) DOWN OR (B) HORIZONTALLY ACROSS THE SLOPE. BLANKETS WILL UNROLL WITH APPROPRIATE SIDE ANCHOR ON THE SOIL SURFACE. ALL BLANKETS MUST BE SECURELY FASTENED TO SOIL SURFACE BY PLACING STAPLES/STAKES IN APPROPRIATE LOCATIONS AS PER MANUFACTURER'S RECOMMENDATION.

4. THE EDGES OF PARALLEL BLANKETS MUST BE STAPLED WITH MINIMUM 6" OVERLAP. TO ENSURE PROPER SEAM ALIGNMENT, PLACE THE EDGE OF THE OVERLAPPING BLANKET (BLANKET BEING INSTALLED ON TOP) EVEN WITH THE SEAM STITCH ON THE PREVIOUSLY INSTALLED BLANKET.

5. CONSECUTIVE BLANKETS SPLICED DOWN THE SLOPE MUST BE PLACED END OVER END (SHINGLE STYLE) WITH AN APPROXIMATE 3" OVERLAP. STAPLE THROUGH OVERLAPPED AREA, APPROXIMATELY 12" APART ALONG ENTIRE BLANKET WIDTH.

6. PLACE STAPLES/STAKES PER MANUFACTURER'S RECOMMENDATION FOR THE APPROPRIATE SLOPE BEING APPLIED.

NOTES:

1. IN LOOSE SOIL CONDITIONS, THE USE OF STAPLE OR STAKE LENGTHS GREATER THAN 6" MAY BE NECESSARY TO PROPERLY SECURE THE BLANKETS.

2. FOLLOW EROSION CONTROL TECHNOLOGY COUNCIL SPECIFICATION FOR PRODUCT SELECTION.

The diagram illustrates the construction and dimensions of a geotextile filter sack. The isometric view shows a rectangular sack with dimensions: LENGTH = L, WIDTH = W, and DEPTH = D. It features an INLET GRATE at the top, RUBBER HOLES, and a 1/4" BRIGHTLY COLORED NYLON ROPE EXPANSION RESTRAINT. The section view shows the sack installed in a trench, with FINISHED GRADE above and SECURE LIFTING LOOPS TO OR UNDER SURFACE below. The sack is made of 2'X2'X3/4" RUBBER BLOCK (TYP) and has 1/4" BRIGHTLY COLORED NYLON ROPE EXPANSION RESTRAINT. The section view also shows the 1/4" BRIGHTLY COLORED NYLON ROPE EXPANSION RESTRAINT and the 1/4" BRIGHTLY COLORED NYLON ROPE EXPANSION RESTRAINT.

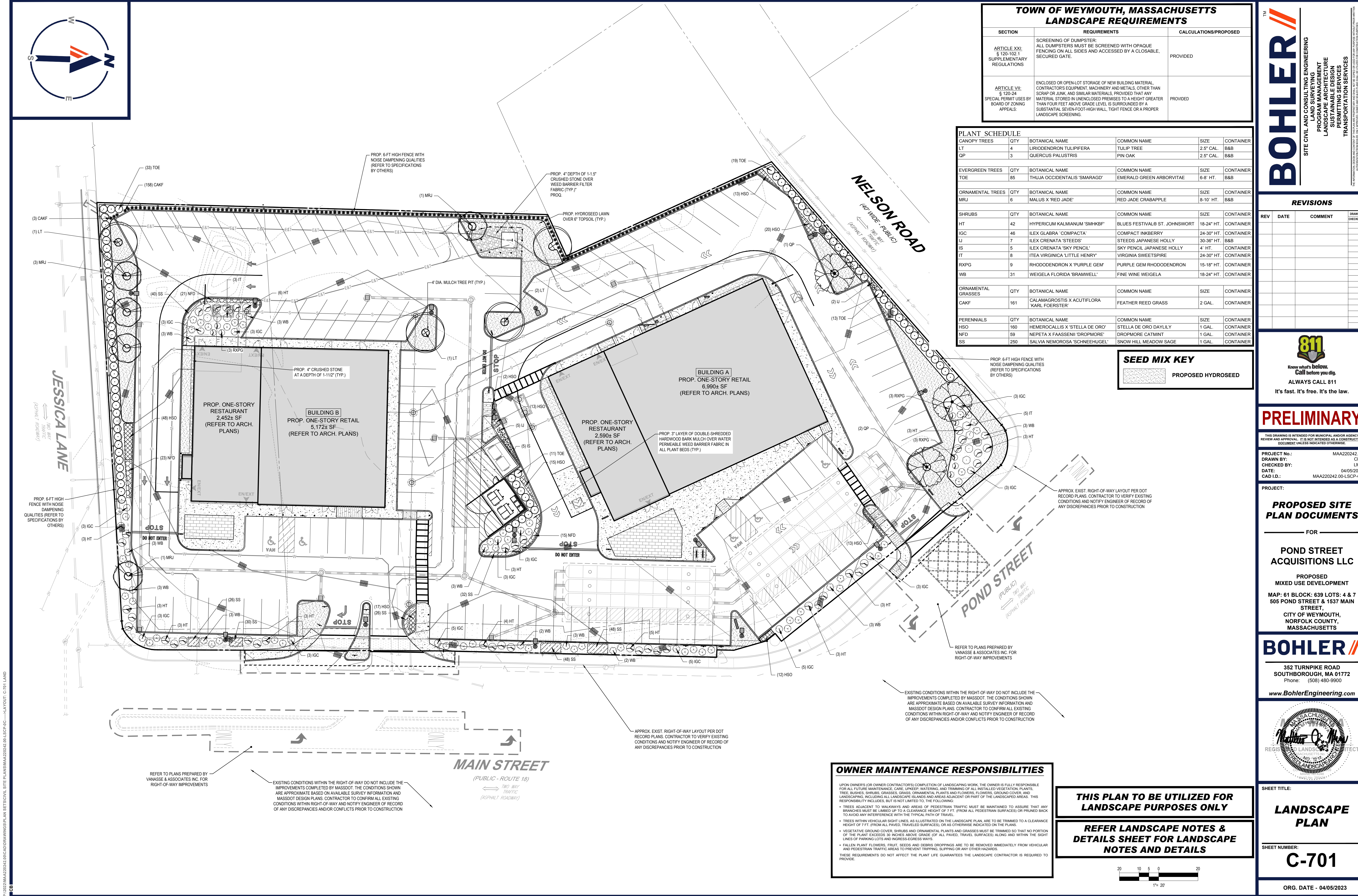
ISOMETRIC
VIEW

LOW TO MODERATE FLOW GEOTEXTILE FILTER SPECIFICATION TABLE		
PROPERTIES	TEST METHOD	UNITS
GRAB TENSILE STRENGTH	ASTM D-4632	300 LBS
GRAB TENSILE ELONGATION	ASTM D-4632	120 LBS
PUNCTURE	ASTM D-4833	120 LBS
MULLEN BURST	ASTM D-3786	800 PSI
TEARPROOF TEAR	ASTM D-4533	120 LBS
UV RESISTANCE	ASTM D-4355	80%
APPEARANT OPENING SIZE	ASTM D-4751	40 US SIEVE
FLOW RATE	ASTM D-4491	40 GAL/MIN SQ FT
PERMITTIVITY	ASTM D-4491	0.55 SEC ⁻¹
MODERATE TO HIGH FLOW GEOTEXTILE FILTER SPECIFICATION TABLE		
PROPERTIES	TEST METHOD	UNITS
GRAB TENSILE STRENGTH	ASTM D-4632	265 LBS
GRAB TENSILE ELONGATION	ASTM D-4632	20%
PUNCTURE	ASTM D-4833	135 LBS
MULLEN BURST	ASTM D-3786	420 PSI
TEARPROOF TEAR	ASTM D-4533	45 LBS
UV RESISTANCE	ASTM D-4355	80%
APPEARANT OPENING SIZE	ASTM D-4751	20 US SIEVE
FLOW RATE	ASTM D-4491	300 GAL/MIN SQ FT
PERMITTIVITY	ASTM D-4491	1.5 SEC ⁻¹

NOTE:

DO NOT USE IN PAVED AREAS WHERE PONDING MAY CAUSE TRAFFIC HAZARDS.

[illegible]



TOWN OF WEYMOUTH, MASSACHUSETTS LANDSCAPE REQUIREMENTS		
SECTION	REQUIREMENTS	CALCULATIONS/PROPOSED
ARTICLE XXI: § 120-102.1 SUPPLEMENTARY REGULATIONS	SCREENING OF DUMPSTER: ALL DUMPSTERS MUST BE SCREENED WITH OPAQUE FENCING ON ALL SIDES AND ACCESSED BY A CLOSABLE, SECURED GATE.	PROVIDED
ARTICLE VII: § 120-24 SPECIAL PERMIT USES BY BOARD OF ZONING APPEALS:	ENCLOSED OR OPEN LOT STORAGE OF NEW BUILDING MATERIAL, CONTRACTOR'S EQUIPMENT, MACHINERY AND METALS, OTHER THAN SCRAP OR JUNK, AND SIMILAR MATERIALS, PROVIDED THAT ANY MATERIAL STORED IN UNENCLOSED PREMISES TO A HEIGHT GREATER THAN FOUR FEET ABOVE GRADE LEVEL IS SURROUNDED BY A SUBSTANTIAL SEVEN-FOOT-HIGH WALL, TIGHT FENCE OR A PROPER LANDSCAPE SCREENING.	PROVIDED

PLANT SCHEDULE				
CANOPY TREES	QTY	BOTANICAL NAME	COMMON NAME	SIZE CONTAINER
LT	4	LIRIODENDRON TULIPIFERA	TULIP TREE	2.5" CAL. B&B
QP	3	QUERCUS PALUSTRIS	PIN OAK	2.5" CAL. B&B
EVERGREEN TREES	QTY	BOTANICAL NAME	COMMON NAME	SIZE CONTAINER
TOE	85	THUJA OCCIDENTALIS 'SMARAGD'	EMERALD GREEN ARBORVITAE	6-8" HT. B&B
ORNAMENTAL TREES	QTY	BOTANICAL NAME	COMMON NAME	SIZE CONTAINER
MRJ	6	MALUS X 'RED JADE'	RED JADE CRABAPPLE	8-10" HT. B&B
SHRUBS	QTY	BOTANICAL NAME	COMMON NAME	SIZE CONTAINER
HT	42	HYPERICUM KALMIANUM 'SMHKB'	BLUES FESTIVAL® ST. JOHNSWORT	18-24" HT. CONTAINER
IGC	46	ILEX GLABRA 'COMPACTA'	COMPACT INKBERRY	24-30" HT. CONTAINER
U	7	ILEX CRENATA 'STEEDS'	STEEDS JAPANESE HOLLY	30-36" HT. B&B
IS	5	ILEX CRENATA 'SKY PENCIL'	SKY PENCIL JAPANESE HOLLY	4" HT. CONTAINER
IT	8	ITEA VIRGINICA 'LITTLE HENRY'	VIRGINIA SWEETSPIRE	24-30" HT. CONTAINER
RXP	9	RHODODENDRON X 'PURPLE GEM'	PURPLE GEM RHODODENDRON	15-18" HT. CONTAINER
WB	31	WEIGELA FLORIDA 'BRAMWELL'	FINE WINE WEIGELA	18-24" HT. CONTAINER
ORNAMENTAL GRASSES	QTY	BOTANICAL NAME	COMMON NAME	SIZE CONTAINER
CAKF	161	CALAMAGROSTIS X ACUTIFLORA 'KARL FOERSTER'	FEATHER REED GRASS	2 GAL. CONTAINER
PERENNIALS	QTY	BOTANICAL NAME	COMMON NAME	SIZE CONTAINER
HSO	160	HEMEROCALLIS X 'STELLA DE ORO'	STELLA DE ORO DAYLILY	1 GAL. CONTAINER
NFD	59	NEPETA X FAASSENII 'DROPMORE'	DROPMORE CATMINT	1 GAL. CONTAINER
SS	250	SALVIA NEMOROSA 'SCHNEEHUGEL'	SNOW HILL MEADOW SAGE	1 GAL. CONTAINER

SEED MIX KEY	
	PROPOSED HYDROSEED

BOHLER

SITE CIVIL AND CONSULTING ENGINEERING
PROGRAM MANAGEMENT
LANDSCAPE ARCHITECTURE
SUSTAINABLE DESIGN
PERMITTING SERVICES
TRANSPORTATION SERVICES

REVISIONS			
REV	DATE	COMMENT	DRAWN BY / CHECKED BY

811

Know what's below.
Call before you dig.
ALWAYS CALL 811
It's fast. It's free. It's the law.

PRELIMINARY

THIS DRAWING IS INTENDED FOR MUNICIPAL AND/OR AGENCY REVIEW AND APPROVAL. IT IS NOT INTENDED AS A CONSTRUCTION DOCUMENT UNLESS INDICATED OTHERWISE.

PROJECT No.: MAA220242.00
DRAWN BY: CPB
CHECKED BY: LMD
DATE: 04/05/2023
CAD ID: MAA220242.00-LSCP-0C

PROPOSED SITE
PLAN DOCUMENTS

FOR

POND STREET
ACQUISITIONS LLC

PROPOSED
MIXED USE DEVELOPMENT

MAP: 61 BLOCK: 639 LOTS: 4 & 7
505 POND STREET & 1537 MAIN
STREET,
CITY OF WEYMOUTH,
NORFOLK COUNTY,
MASSACHUSETTS

BOHLER

352 TURNPIKE ROAD
SOUTHBOROUGH, MA 01772
Phone: (508) 480-9900
www.BohlerEngineering.com

MASSACHUSETTS
REGISTERED LANDSCAPE ARCHITECT
No. 14058
BOHLER ENGINEERING, INC.

SHEET TITLE:

LANDSCAPE
PLAN

SHEET NUMBER:

C-701

ORG. DATE - 04/05/2023

OWNER MAINTENANCE RESPONSIBILITIES

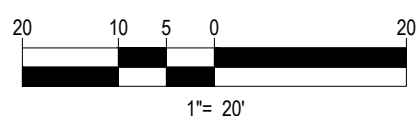
UPON OWNERS (OR OWNER CONTRACTORS) COMPLETION OF LANDSCAPING WORK, THE OWNER IS FULLY RESPONSIBLE FOR ALL FUTURE MAINTENANCE, CARE, UPKEEP, WATERING, AND TRIMMING OF ALL INSTALLED VEGETATION, PLANTS, TREES, BURNES, SHRUBS, GRASSES, GRASS, ORNAMENTAL PLANTS AND FLOWERS, GRASS, COVER, AND LANDSCAPING, INCLUDING ALL LANDSCAPE ISLANDS AND AREAS ADJACENT OR PART OF THE LANDSCAPED AREAS. THIS RESPONSIBILITY INCLUDES, BUT IS NOT LIMITED TO, THE FOLLOWING:

- TREES ADJACENT TO WALKWAYS AND AREAS OF PEDESTRIAN TRAFFIC MUST BE MAINTAINED TO ASSURE THAT ANY BRANCHES MUST BE LIMBED UP TO A CLEARANCE HEIGHT OF 7 FT. (FROM ALL PEDESTRIAN SURFACES) OR PRUNED BACK TO AVOID ANY INTERFERENCE WITH THE TYPICAL PATH OF TRAVEL.
- TREES WITHIN VEHICULAR SIGHT LINES, AS ILLUSTRATED ON THE LANDSCAPE PLAN, ARE TO BE TRIMMED TO A CLEARANCE HEIGHT OF 7 FT. (FROM ALL PAVED, TRAVELED SURFACES), OR AS OTHERWISE INDICATED ON THE PLAN.
- VEGETATIVE GROUND COVER, SHRUBS AND ORNAMENTAL PLANTS AND GRASSES MUST BE TRIMMED SO THAT NO PORTION OF THE PLANT EXCEEDS 30 INCHES ABOVE GRADE (OF ALL PAVED, TRAVELED SURFACES) ALONG AND WITHIN THE SIGHT LINES OF PARKING LOTS AND WALKWAYS.
- FALLEN PLANT FLOWERS, FRUIT, SEEDS AND DEBRIS DROPPINGS ARE TO BE REMOVED IMMEDIATELY FROM VEHICULAR AND PEDESTRIAN TRAFFIC AREAS TO PREVENT TRIPPING, SLIPPING OR ANY OTHER HAZARDS.

THESE REQUIREMENTS DO NOT AFFECT THE PLANT LIFE GUARANTEES THE LANDSCAPE CONTRACTOR IS REQUIRED TO PROVIDE.

THIS PLAN TO BE UTILIZED FOR
LANDSCAPE PURPOSES ONLY

REFER LANDSCAPE NOTES &
DETAILS SHEET FOR LANDSCAPE
NOTES AND DETAILS



P:\0222\MAA220242.00\CADD\DRAWINGS\PLAN SET\0222\MAA220242.00-LSCP-0C.dwg LAYOUT: C-701 LAND




LANDSCAPE SPECIFICATIONS

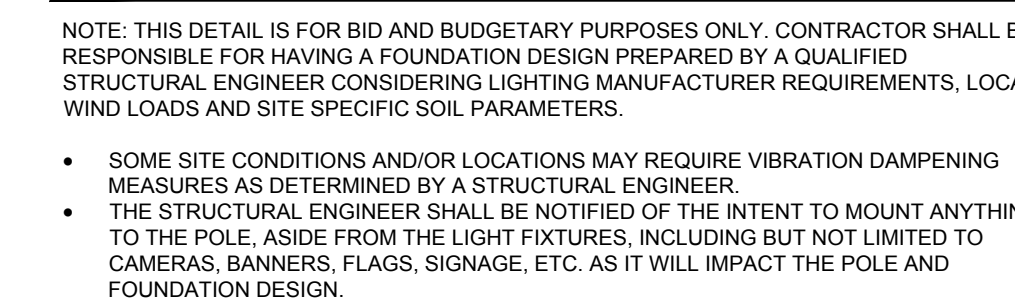
1.	SCOPE OF WORK:		9.3.	ANY INJURED ROOTS OR BRANCHES SHALL BE PRUNED TO MAKE CLEAN-CUT ENDS PRIOR TO PLANTING UTILIZING CLEAN, SHARP TOOLS. ONLY INJURED OR DISEASED BRANCHING SHALL BE REMOVED.
	1.1.	THE LANDSCAPE CONTRACTOR SHALL BE REQUIRED TO PERFORM ALL CLEARING, FINISHED GRADING, SOIL PREPARATION, PERMANENT SEEDING OR SODDING, PLANTING AND MULCHING INCLUDING ALL LABOR, MATERIALS, TOOLS AND EQUIPMENT NECESSARY FOR THE COMPLETION OF THIS PROJECT, UNLESS OTHERWISE CONTRACTED BY THE GENERAL CONTRACTOR.	9.4.	ALL PLANTING CONTAINERS, BASKETS AND NON-BIODEGRADABLE MATERIALS SHALL BE REMOVED FROM ROOT BALLS DURING PLANTING. NATURAL FIBER BURLAP MUST BE CUT FROM AROUND THE TRUNK OF THE TREE AND FOLDED DOWN AGAINST THE ROOT BALL PRIOR TO BACKFILLING.
2.	MATERIALS		9.5.	POSITION TREES AND SHRUBS AT THEIR INTENDED LOCATIONS AS PER THE PLANS AND SECURE THE APPROVAL OF THE LANDSCAPE ARCHITECT PRIOR TO EXCAVATING PITS, MAKING NECESSARY ADJUSTMENTS AS DIRECTED.
	2.1.	GENERAL - ALL HARDSCAPE MATERIALS SHALL MEET OR EXCEED SPECIFICATIONS AS OUTLINED IN THE STATE DEPARTMENT OF TRANSPORTATION'S SPECIFICATIONS.	9.6.	PRIOR TO THE ISSUANCE OF ANY CERTIFICATE OF OCCUPANCY, THE PROPOSED LANDSCAPE, AS SHOWN ON THE APPROVED LANDSCAPE PLAN, MUST BE INSTALLED, INSPECTED AND APPROVED BY THE APPROVING AGENCY. THE APPROVING AGENCY SHALL TAKE INTO ACCOUNT SEASONAL CONSIDERATIONS IN THIS REGARD AS FOLLOWS. THE PLANTING OF TREES, SHRUBS, VINES OR GROUND COVER SHALL OCCUR ONLY DURING THE FOLLOWING PLANTING SEASONS:
2.2.	TOPSOIL - NATURAL, FRIABLE, LOAMY SILT SOIL HAVING AN ORGANIC CONTENT NOT LESS THAN 5%, A PH RANGE BETWEEN 4.5-7.0. IT SHALL BE FREE OF DEBRIS, ROCKS LARGER THAN ONE INCH (1"), WOOD, ROOTS, VEGETABLE MATTER AND CLAY CLODS.		9.6.1.	LAWNS: MARCH 15 TO DECEMBER 15
2.3.	LAWN - ALL DISTURBED AREAS ARE TO BE TREATED WITH A MINIMUM 6" THICK LAYER OF TOPSOIL, OR AS DIRECTED BY THE LOCAL ORDINANCE OR CLIENT, AND SEEDED OR SODDED IN ACCORDANCE WITH THE PERMANENT STABILIZATION METHODS INDICATED ON THE LANDSCAPE PLAN		9.6.2.	LAWN: MARCH 15 TO JUNE 15 OR SEPT. 1 TO DECEMBER 1
2.3.1.	LAWN SEED MIXTURE SHALL BE FRESH, CLEAN NEW CROP SEED.		9.6.3.	PLANTINGS REQUIRED FOR A CERTIFICATE OF OCCUPANCY SHALL BE PROVIDED DURING THE NEXT APPROPRIATE SEASON AT THE MUNICIPALITY'S DISCRETION. CONTRACTOR SHOULD CONTACT APPROVING AGENCY FOR POTENTIAL SUBSTITUTIONS.
2.3.2.	SOD SHALL BE STRONGLY ROOTED, WEED AND DISEASE/PEST FREE WITH A UNIFORM THICKNESS. SOD INSTALLED ON SLOPES GREATER THAN 4:1 SHALL BE MULCHED TO HOLD SOD IN PLACE.		9.7.	FURTHERMORE, THE FOLLOWING TREE VARIETIES ARE UNUSUALLY SUSCEPTIBLE TO WINTER DAMAGE. WITH TRANSPLANT SHOCK AND THE SEASONAL LACK OF NITROGEN AVAILABILITY, THE RISK OF PLANT DIE IS GREATLY INCREASED. IT IS NOT RECOMMENDED THAT THESE SPECIES BE PLANTED DURING THE FALL PLANTING SEASON:
2.4.	MULCH - ALL PLANTING BEDS SHALL BE PEGGED WITH A 3" THICK LAYER OF DOUBLE SHREDDED HARDWOOD BARK MULCH, UNLESS OTHERWISE STATED ON THE LANDSCAPE PLAN AND/OR LANDSCAPE PLAN NOTES/DETAILS.			ACER RUBRUM PLATANUS X ACERIFOLIA
2.5.	FERTILIZER			BETULA VARIETIES POPULUS VARIETIES
	2.5.1.	FERTILIZER SHALL BE DELIVERED TO THE SITE MIXED AS SPECIFIED IN THE ORIGINAL UNOPENED STANDARD BAGS SHOWING WEIGHT, ANALYSIS AND NAME OF MANUFACTURER. FERTILIZER SHALL BE STORED IN A WEATHERPROOF PLACE SO THAT IT CAN BE KEPT DRY PRIOR TO USE.		CARPINUS VARIETIES PRUNUS VARIETES
2.5.2.	FOR THE PURPOSE OF BIDDING, ASSUME THAT FERTILIZER SHALL BE 10% NITROGEN, 6% PHOSPHORUS AND 4% POTASSIUM BY WEIGHT. A FERTILIZER SHOULD NOT BE SELECTED WITHOUT A SOIL TEST PERFORMED BY A CERTIFIED SOIL LABORATORY.			CRATAEGUS VARIETIES PYRUS VARIETES
2.6.	PLANT MATERIAL			KOELREUTERIA QUERCUS VARIETES
	2.6.1.	ALL PLANTS SHALL IN ALL CASES CONFORM TO THE REQUIREMENTS OF THE "AMERICAN STANDARD FOR NURSERY STOCK" (ANSI Z60.1), LATEST EDITION, AS PUBLISHED BY THE AMERICAN NURSERY & LANDSCAPE ASSOCIATION (FORMERLY THE AMERICAN ASSOCIATION OF NURSERYMEN).		LIQUIDAMBAR STYRACIFLUA TILIA TOMENTOSA
2.6.2.	IN ALL CASES, BOTANICAL NAMES SHALL TAKE PRECEDENCE OVER COMMON NAMES FOR ANY AND ALL PLANT MATERIAL.			LIRIODENDRON TULIPIFERA ZELKOVA VARIETES
2.6.3.	PLANTS SHALL BE LEGIBLY TAGGED WITH THE PROPER NAME AND SIZE. TAGS ARE TO REMAIN ON AT LEAST ONE PLANT OF EACH SPECIES FOR VERIFICATION PURPOSES DURING THE FINAL INSPECTION.		9.8.	PLANTING PITS SHALL BE DUG WITH LEVEL BOTTOMS, WITH THE WIDTH TWICE THE DIAMETER OF ROOT BALL. THE ROOT BALL SHALL REST ON UNDISTURBED GRADE. EACH PLANT PIT SHALL BE BACKFILLED IN LAYERS WITH THE FOLLOWING PREPARED SOIL MIXED THOROUGHLY.
2.6.4.	TREES WITH ABRASION OF THE BARK, SUN SCALDS, DISFIGURATION OR FRESH CUTS OF LIMBS OVER 1/2", WHICH HAVE NOT BEEN COMPLETELY CALLEDUS, SHALL BE REJECTED. PLANTS SHALL NOT BE BOUND WITH WIRE OR ROPE AT ANY TIME SO AS TO DAMAGE THE BARK OR BREAK BRANCHES.		9.8.1.	1 PART PEAT MOSS
2.6.5.	ALL PLANTS SHALL BE TYPICAL OF THEIR SPECIES OR VARIETY AND SHALL HAVE A NORMAL HABIT OF GROWTH; WELL DEVELOPED BRANCHES, DENSELY FOLIATED, VIGOROUS ROOT SYSTEMS AND BE FREE OF DISEASE, INSECTS, PESTS, EGGS OR LARVAE.		9.8.2.	1 PART COMPOSTED COW MANURE BY VOLUME
2.6.6.	CALIPER MEASUREMENTS OF NURSERY GROWN TREES SHALL BE TAKEN AT A POINT ON THE TRUNK SIX INCHES (6") ABOVE THE NATURAL GRADE FOR TREES UP TO AND INCLUDING A FOUR INCH (4") CALIPER SIZE. IF THE CALIPER AT SIX INCHES (6") ABOVE THE GROUND EXCEEDS FOUR INCHES (4") IN CALIPER, THE CALIPER SHOULD BE MEASURED AT A POINT 12" ABOVE THE NATURAL GRADE.		9.8.3.	3 PARTS TOPSOIL BY VOLUME
2.6.7.	SHRUBS SHALL BE MEASURED TO THE AVERAGE HEIGHT OR SPREAD OF THE SHRUB, AND NOT TO THE LONGEST BRANCH.		9.8.4.	21 GRAMS AGRIFORM PLANTING TABLETS (OR APPROVED EQUAL) AS FOLLOWS:
2.6.8.	TREES AND SHRUBS SHALL BE HANDLED WITH CARE BY THE ROOT BALL.		9.8.4.1.	2 TABLETS PER 1 GALLON PLANT
3.	GENERAL WORK PROCEDURES		9.8.4.2.	3 TABLETS PER 5 GALLON PLANT
	3.1.	CONTRACTOR TO UTILIZE WORKMANLIKE INDUSTRY STANDARDS IN PERFORMING ALL LANDSCAPE CONSTRUCTION. THE SITE IS TO BE LEFT CLEAN, CLEAR STATE AT THE END OF EACH WORKDAY. ALL DEBRIS, MATERIALS AND TOOLS SHALL BE PROPERLY STORED, STOCKPILED OR DISPOSED OF.	9.8.4.3.	4 TABLETS PER 15 GALLON PLANT
3.2.	WASTE MATERIALS AND DEBRIS SHALL BE COMPLETELY DISPOSED OF AT THE CONTRACTOR'S EXPENSE. DEBRIS SHALL NOT BE BURIED, INCLUDING ORGANIC MATERIALS, BUT SHALL BE REMOVED COMPLETELY FROM THE SITE.		9.8.4.4.	LARGER PLANTS: 2 TABLETS PER 1/2" CALIPER OF TRUNK
4.	SITE PREPARATIONS		9.9.	FILL PREPARED SOIL AROUND BALL OF PLANT HALF-WAY AND INSERT PLANT TABLETS. COMPLETE BACKFILL AND WATER THOROUGHLY.
	4.1.	BEFORE AND DURING PRELIMINARY GRADING AND FINISHED GRADING, ALL WEEDS AND GRASSES SHALL BE DUG OUT BY THE ROOTS AND DISPOSED OF IN ACCORDANCE WITH GENERAL WORK PROCEDURES OUTLINED HEREIN.	9.10.	ALL PLANTS SHALL BE PLANTED SO THAT THE TOP OF THE ROOT BALL, THE POINT AT WHICH THE ROOT FLARE BEGINS, IS SET AT GROUND LEVEL AND IN THE CENTER OF THE PIT. NO SOIL IS TO BE PLACED DIRECTLY ON TOP OF THE ROOT BALL.
4.2.	ALL EXISTING TREES TO REMAIN SHALL BE PRUNED TO REMOVE ANY DAMAGED BRANCHES. THE ENTIRE LIMB OF ANY DAMAGED BRANCH SHALL BE CUT OFF AT THE BRANCH COLLAR. CONTRACTOR SHALL ENSURE THAT CUTS ARE SMOOTH AND STRAIGHT. ANY EXPOSED ROOTS SHALL BE CUT BACK WITH CLEAN, SHARP TOOLS AND TOPSOIL SHALL BE PLACED AROUND THE REMAINDER OF THE ROOTS. EXISTING TREES SHALL BE MONITORED ON A REGULAR BASIS FOR ADDITIONAL ROOT OR BRANCH DAMAGE AS A RESULT OF CONSTRUCTION. ROOTS SHALL NOT BE LEFT EXPOSED FOR MORE THAN ONE (1) DAY. CONTRACTOR SHALL WATER EXISTING TREES AS NEEDED TO PREVENT SHOCK OR DECLINE.		9.11.	ALL PROPOSED TREES DIRECTLY ADJACENT TO WALKWAYS OR DRIVEWAYS SHALL BE PRUNED AND MAINTAINED TO A MINIMUM BRANCHING HEIGHT OF 7' FROM GRADE.
4.3.	CONTRACTOR SHALL ARRANGE TO HAVE A UTILITY STAKE-OUT TO LOCATE ALL UNDERGROUND UTILITIES PRIOR TO INSTALLATION OF ANY LANDSCAPE MATERIAL. UTILITY COMPANIES SHALL BE CONTACTED THREE (3) DAYS PRIOR TO THE BEGINNING OF WORK.		9.12.	GROUND COVER AREAS SHALL RECEIVE A 1" LAYER OF HUMUS RAKED INTO THE TOP 1" OF PREPARED SOIL PRIOR TO PLANTING. ALL GROUND COVER AREAS SHALL BE WEEDED AND TREATED WITH A PRE-EMERGENT CHEMICAL AS PER MANUFACTURER'S RECOMMENDATION.
5.	TREE PROTECTION		9.13.	NO PLANT, EXCEPT GROUND COVERS, GRASSES OR VINES, SHALL BE PLANTED LESS THAN TWO FEET (2') FROM EXISTING STRUCTURES AND SIDEWALKS.
	5.1.	CONTRACTOR SHALL BE RESPONSIBLE FOR THE PROTECTION OF ALL EXISTING TREES TO REMAIN. A TREE PROTECTION ZONE SHALL BE ESTABLISHED AT THE DRIP LINE OR AT THE LIMIT OF CONSTRUCTION DISTURBANCE, WHICHEVER IS GREATER. LOCAL STANDARDS THAT MAY REQUIRE A MORE STRICT TREE PROTECTION ZONE SHALL BE HONORED.	9.14.	ALL PLANTING AREAS

ORG. DATE - 04/05/2023



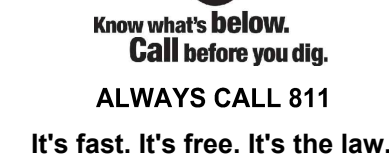
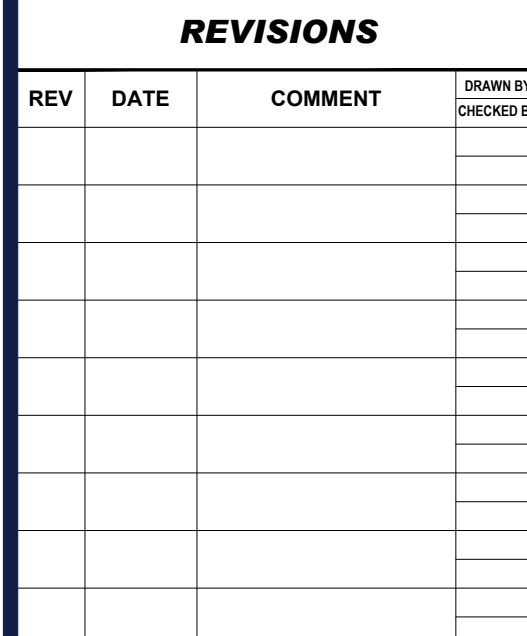
1. THIS LIGHTING PLAN DEPICTS PROPOSED SUSTAINED ILLUMINATION LEVELS CALCULATED USING DATA PROVIDED BY THE NOTED MANUFACTURER(S). ACTUAL SUSTAINED SITE ILLUMINATION LEVELS AND PERFORMANCE OF LUMINAIRES MAY VARY DUE TO VARIATIONS IN WEATHER, ELECTRICAL VOLTAGE TOLERANCE IN LAMP TO THE SERVICE LIFE OF EQUIPMENT AND LUMINAIRES AND OTHER RELATED VARIABLE FIELD CONDITIONS.
2. THE LIGHT LOSS FACTORS USED IN THESE LIGHTING CALCULATIONS ARE 0.90 FOR ALL LED LUMINAIRES, 0.80 FOR ALL HIGH PRESSURE SODIUM LUMINAIRES OR 0.72 FOR ALL METAL HALIDE LUMINAIRES UNLESS OTHERWISE SPECIFIED. THESE FACTORS ARE INDICATIVE OF TYPICAL LIGHTING INDUSTRY MODELING STANDARDS.
3. THE LIGHTING VALUES AND CALCULATION POINTS DEPICTED ON THIS PLAN ARE ALL BASED ON A HORIZONTAL AND GEOMETRIC RESPONSIBILITY OF THE ARCHITECT (ZERO FEET LEVEL) UNLESS OTHERWISE NOTED. THE VALUES DEPICTED ON THIS PLAN ARE IN FOOTCANDLES.
4. THE LUMINAIRES, LAMPS AND LENSES MUST BE REGULARLY INSPECTED/MAINTAINED TO ENSURE THAT THEY FUNCTION PROPERLY. THIS WORK SHOULD INCLUDE, BUT NOT BE LIMITED TO, FREQUENT VISUAL INSPECTIONS, CLEANING OF LENSES, AND REPLACEMENT (IF NEEDED) OF BURNING BULBS (E.G. MONITORING AND MAINTENANCE TO FOLLOW THE ABOVE STEPS COULD CAUSE THE LUMINAIRES, LAMPS AND LENSES TO FAIL PROPERLY TO FUNCTION.
5. WHERE APPLICABLE, THE EXISTING CONDITION LIGHT LEVELS ILLUSTRATED ARE REPRESENTATIVE OF AN APPROXIMATION UTILIZING LABORATORY DATA FOR SIMILAR FIXTURES, UNLESS ACTUAL FIELD MEASUREMENTS ARE TAKEN WITH A LIGHT METER AND CONSIDERED. CONSIDERATIONS DUE TO VARIATIONS IN WEATHER, SUCH AS FIXTURE MAINTENANCE, EQUIPMENT TOLERANCES, WEATHER CONDITIONS, ETC., ACTUAL LIGHT LEVELS MAY DIFFER. EXISTING LIGHT LEVELS DEPICTED ON THIS PLAN SHOULD BE CONSIDERED APPROXIMATE.
6. THIS LIGHTING PLAN IS INTENDED TO SHOW THE LOCATIONS AND TYPE OF LUMINAIRES, ONLY. POWER SYSTEM, CONDUITS, WIRING, VOLTAGES AND OTHER ELECTRICAL COMPONENTS ARE THE RESPONSIBILITY OF THE ARCHITECT, MEP AND/OR LIGHTING CONTRACTOR, AS INDICATED IN THE CONSTRUCTION CONTRACT DOCUMENTS. THESE ITEMS MUST BE INSTALLED AS REQUIRED BY STATE AND LOCAL REGULATIONS. LIGHT POLE BASES ARE THE RESPONSIBILITY OF THE STRUCTURAL ENGINEER, AS INDICATED. THE LIGHTING CONTRACTOR (THIS DOCUMENT) CONTRACTOR IS RESPONSIBLE FOR INSTALLING LIGHTING FIXTURES AND APPURTENANCES IN ACCORDANCE WITH ALL APPLICABLE BUILDING AND ELECTRICAL CODES AND ALL OTHER APPLICABLE RULES, REGULATIONS, LAWS AND STATUTES.
7. CONTRACTOR MUST BRING TO DESIGNER'S ATTENTION, PRIOR TO THE COMMENCEMENT OF CONSTRUCTION, ANY LIGHT LOCATIONS THAT CONFLICT WITH DRAINAGE, UTILITIES, OR OTHER STRUCTURES.
8. IT IS THE LIGHTING CONTRACTOR'S RESPONSIBILITY TO COORDINATE WITH THE ARCHITECT AND ARCHITECT ENGINEER REGARDING THE POWER SOURCES FROM WITHIN THE BUILDING, AND TIMING DEVICES NECESSARY TO MEET THE DESIGN INTENT.
9. THE LIGHTING CONTRACTOR SHALL COMPLY WITH ALL APPLICABLE CONTRACTOR REQUIREMENTS INDICATED IN THE SITE PLAN, INCLUDING BUT NOT LIMITED TO, GENERAL NOTES, GRADING AND UTILITY NOTES, SITE SAFETY, AND ALL GOVERNMENTAL RULES, LAWS, ORDINANCES, REGULATIONS AND THE LIKE.
10. THE CONTRACTOR MUST VERIFY THAT INSTALLATION OF LIGHTING FIXTURES COMPLIES WITH THE REQUIREMENTS FOR SEPARATION FROM OVERHEAD ELECTRICAL WIRES PER STATE REGULATIONS.
11. UPON OWNER'S ACCEPTANCE OF THE COMPLETED PROJECT, THE OWNER SHALL BE RESPONSIBLE FOR ALL MAINTENANCE, SERVICING, REPAIR AND INSPECTION OF THE LIGHTING SYSTEM. THE CONTRACTOR SHALL BE RESPONSIBLE TO ENSURE ADEQUATE LIGHTING LEVELS ARE PRESENT AND FUNCTIONING AT ALL TIMES.

LUMINAIRE SCHEDULE						
SYMBOL	QTY	ARRANGEMENT	LUMENS	LLF	DESCRIPTION	
 A	12	SINGLE	16394	0.90	LSI LIGHTING GREENBRAR TYPE 3 LED AREA LIGHT WITH SHIELD MOUNTED @ 20'; XGBM-3-LED-SS-NW-HSS	
 B	2	DOUBLE @ 180	15173	0.90	LSI LIGHTING GREENBRAR TYPE 5 LED AREA LIGHT MOUNTED @ 20'; XGBM-5-LED-SS-NW	
 C	23	BUILDING	4553	0.90	LSI LIGHTING GREENBRAR FORWARD THROW LED WALL SCONCE MOUNTED @ 10'; XGBM3-F-LED-LED-350-NW-UE	



20 10 5 0 20

1" = 20'



THIS DRAWING IS INTENDED FOR MUNICIPAL AND/OR AGENCY
REVIEW AND APPROVAL. IT IS NOT INTENDED AS A CONSTRUCTION
DOCUMENT UNLESS INDICATED OTHERWISE.

PROJECT:

_____ FOR _____

**PROPOSED
MIXED USE DEVELOPMENT**

**MAP: 61 BLOCK: 639 LOTS: 4 & 7
505 POND STREET & 1537 MAIN
STREET,
CITY OF WEYMOUTH,
NORFOLK COUNTY,
MASSACHUSETTS**

352 TURNPIKE ROAD
SOUTHBOROUGH, MA 01772
Phone: (508) 480-9900

www.BohlerEngineering.com



SHEET NUMBER: _____

ORG. DATE - 04/05/2023

