

Via Email

August 11, 2020

Mary Ellen Schloss
Weymouth Conservation Administrator
75 Middle Street
Weymouth, MA 02189

Re: 44 Revere Road – Floating Dock Request for Approval

Dear Mary Ellen Schloss and Members of the Conservation Commission:

We are working with the Weymouth Harbormaster on obtaining a Floating Dock Permit for our property on Whitman's Pond located at 44 Revere Road in East Weymouth.

Below is a brief summary of the proposed products to be used with supporting materials attached for your approval:

1. Proposed Docking System: Manufactured by EZ Dock, a plastic floating dock system that floats entirely on its own without the need for additional support below the waterline. See EZ Dock Catalog and Site Plan attached.
2. Proposed Supporting Brackets and Stiff Arms: EZ Dock makes specific brackets for their docking system to use with stiff arms. This method of securing the dock was proposed as the best suitable solution by EZ Dock because there would be no need for work to be completed below the waterline as well as the stiff arms would allow the dock to go up and down as the water elevation fluctuates. Stiff arms also allow the dock to be kept in year round if wanted. These stiff arms proposed to be secured directly to the EZ Dock itself and the rock ledge to allow the dock to pivot freely up and down. See example photos of the Heavy Duty Bracket, Stiff Arm and Shore Bracket attached.

We look forward to reviewing this information with you if time allows at the next Conservation Meeting – Tuesday, August 25, 2020.

Sincerely,



Dustin Briere
44 Revere Road
East Weymouth, MA 02189

Enclosure(s): EZ Dock Catalog Information
Floating Dock Site Plan
Heavy Duty Bracket Photo
Stiff Arm Example Photo
Shore Bracket Example Photo



OUR STORY

In 1991, two friends set out to create the ideal dock after years of battling harsh weather conditions and having to install and remove their wooden dock seasonally. The result—the patented EZ Dock® System. Today, we are the industry leader in floating modular docks, offering a wide selection of dock systems, boat and PWC lifts, and accessories.

EZ Dock is the best investment you will make for your waterfront property. Combining strength and stability with light weight and low maintenance, our patented designs have applications in commercial marine, residential, and industrial markets.

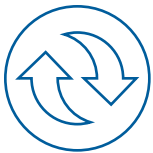
EZ Dock is the best investment you will ever make in your waterfront property.

We proudly manufacture all of our roto-molded product in the U.S.A.



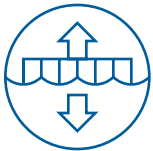
Low Maintenance and Barefoot Friendly

- EZ Dock polyethylene docks are durable and slip resistant
- Won't splinter or rot, never needs painting
- Cleans easily with soap and water



Adaptable Design

- Unique design delivers outstanding load capacity, functionality, and safety
- Variety of dock sections, boat/PWC lifts, and kayak launches
- Easily customizable design to make your perfect waterfront retreat



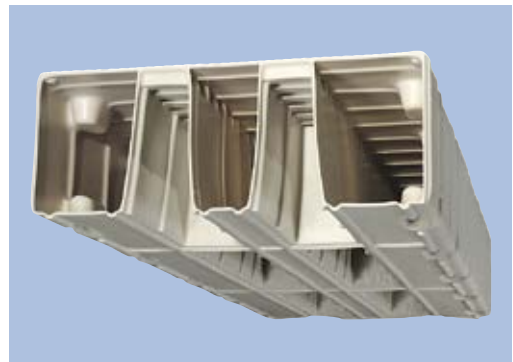
Flexible Flotation Technology

- Flotation chambers constructed for optimal strength and structural integrity
- Designed to provide additional stability on the water
- Dock sections adapt easily to changing water conditions and levels



Innovative Coupling

- Made of recycled materials
- Nuts and bolts made of heavy duty, rust resistant composite
- Strength and durability even in the harshest weather conditions



STANDARD DOCK SECTIONS

Get the look and features that are right for you

Our floating, modular, composite dock sections can be formed into a wide variety of custom configurations to perfectly suit your shoreline and your lifestyle. EZ Dock offers features and benefits that no other dock can match: unbeatable adaptability, exceptional performance in rough water, superior strength and durability, virtually no upkeep, universal accessibility, and easy installation. From simple straight-dock designs to complex configurations featuring multiple ports and platforms, EZ Dock makes it easy to create just what your family needs.



	DOCK SECTIONS	SIZE (W x L x H)	AREA	WEIGHT	FLOTATION CAPACITY	PART #
1.	40" x 5' Dock	40" x 60" x 15" 1 m x 1.5 m x 38 cm	16 sq ft 1.5 m ²	88 lbs 39.9 kg	1,000 lbs 453.6 kg	204060
2.	40" Dock	40" x 120" x 15" 1 m x 3 m x 38 cm	32 sq ft 3 m ²	167 lbs 75.7 kg	2,000 lbs 907.2 kg	204010
3.	60" Dock	60" x 120" x 15" 1.5 m x 3 m x 38 cm	49 sq ft 4.5 m ²	257 lbs 116.5 kg	3,000 lbs 1,360.8 kg	206010
4.	80" Dock	80" x 120" x 15" 2 m x 3 m x 38 cm	64 sq ft 6 m ²	338 lbs 153.3 kg	4,000 lbs 1,814.4 kg	208010
5.	100" Dock	100" x 80" x 15" 2.3 m x 2 m x 38 cm	49 sq ft 4.6 m ²	287 lbs 130.1 kg	3,100 lbs 1,406 kg	208008
6.	Half Hex Dock	60" x 120" x 15" 1.5 m x 3 m x 38 cm	49 sq ft 4.5 m ²	189 lbs 85.7 kg	2,000 lbs 907.2 kg	260120
7.	Corner Gusset	34" x 34" x 47" 86 cm x 86 cm x 119 cm	31 sq ft 2.8 m ²	22 lbs 9.9 kg	N/A	300501
8.	TriDock	58-1/8" x 58-1/8" x 14-5/8" 1.47 m x 1.47 m x 37.14 cm	59 sq ft 10.7 m ²	70 lbs 31.7 kg	750 lbs 340.1 kg	300503

***NOTE:** TriDock not shown above.

Weights and dimensions may vary because of the rotational molding process. Supplemental flotation available to increase capacity for specific applications.



EZ PORT® MAX 2i DRIVE-ON LIFT

EZ Port revolutionized docking and launching with the original, drive-on PWC lift. Our patented industry-leading EZ Port Max 2i takes that innovation to the highest level. It features a split entry and self-adjusting rollers that make loading and unloading smooth and effortless. EZ Port Max 2i is the simplest and most durable drive-on, push-off method of dry docking. Whether you are an experienced operator or just getting started, boarding and launching is a breeze, and is ideal for any size or brand of PWCs.



FEATURES/BENEFITS:

- Adjustable rollers adapt to all PWC brands and hull designs for ease on and off of the port
- Three-sided accessibility to configure exactly to your needs
- Wide variety of anchoring options make it simple to accommodate to your waterfront

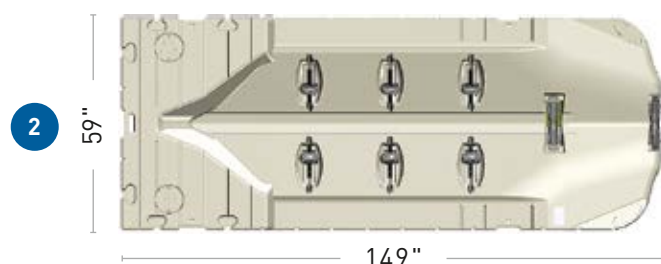
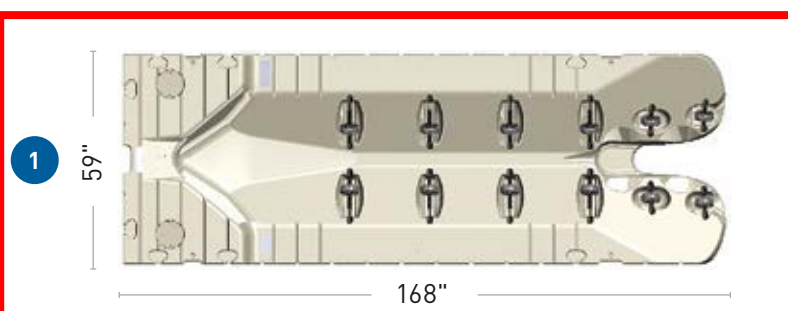
IDLE UP



EASE INTO THROTTLE



ROLL TO FRONT



	DESCRIPTION	SIZE (W x L x H)	WEIGHT	FLOTATION CAPACITY	PART #
1.	EZ Port MAX 2i	168" x 59" x 15" 4.3 m x 1.5 m x 38 cm	324 lbs 146.9 kg	1,700 lbs 771 kg	206036PW
2.	EZ Port MAX	148" x 59" x 15" 3.8 m x 1.5 m x 38 cm	296 lbs 134.2 kg	1,380 lbs 626 kg	206032PW



ANCHORS

Once you've created your EZ Dock, you'll need to select an anchoring system to work with your existing piling or your new installation. Our wide variety of anchoring components can accommodate most water conditions and bottoms (deep, shallow, rough, muddy, or sandy) and are simple to install. EZ Dock anchoring products are made from long-lasting, durable materials that can accommodate standard or heavy-duty use. Your local dealer can help you select the anchoring system that's right for your location. Call us at 1-800-654-8168.



1. Pipe Augers

100255 or 100355

Nut and bolt auger for drilling and setting pipe in lakes, rivers, or ocean bottoms. Pipe sold separately.

2. Adapter Hinge

100750 or 100750SS

Reversible hinge for bolting EZ Port PWC lifts or EZ Dock sections to other types of floating docks. Set of two.

3. Stiff-Arm (Heavy-Duty)

800099

Anchor to shoreline abutment or shoreline post with our heavy-duty stiff-arm. Light-duty stiff-arm bracket also available.

4. Pipe Bracket (Heavy-Duty)

215250 or 215350

Heavy-duty polyethylene pipe bracket allows docks to adjust to changing water levels.

5. Pipe Bracket (Standard-Duty)

135250 or 135350

Standard-duty polyethylene bracket provides ample anchoring for EZ Port PWC lifts or for smaller docks in moderate conditions.

6. Pipe Stand-Off Bracket

1051000

Polyurethane bracket attaches top of pipe to stationary docks. Fits pipe from 2.5" to 3.5" O.D.

7. Deadweight Bracket (Heavy-Duty)

210350 with 100725P Insert

Add a deadweight insert to our heavy-duty polyethylene pipe bracket to anchor docks in deep water or over rocky bottoms.

8. Deadweight Winch Insert

210350 with 100730 Winch Insert

Deadweight insert and cable winch added to our polyethylene pipe bracket allow easy dock adjustment for water fluctuations. Cable sold separately.

9. Deadweight Bracket (Standard-Duty)

100740 or 100740SS

For light-duty anchoring with chain and/or to attach 4" x 4" railing or mooring posts. Chain sold separately. Set of two.

10. Deadweight Stiff Arm Combo Bracket

100700 or 800095-15

Combination bracket can be used with both EZ Dock's deadweight or stiff-arm anchoring system.

11. Adjustable Piling Bracket

300800

Heavy-duty polyethylene bracket allows lateral position adjustment to attach to piles up to 18" in diameter.

12. Piling Bracket and Hoop

100800 or 100812 (shown)

Mainframe piling bracket is pre-drilled for hoops from 4" to 24" wide. Includes connectors with nuts. Hoops sold separately.

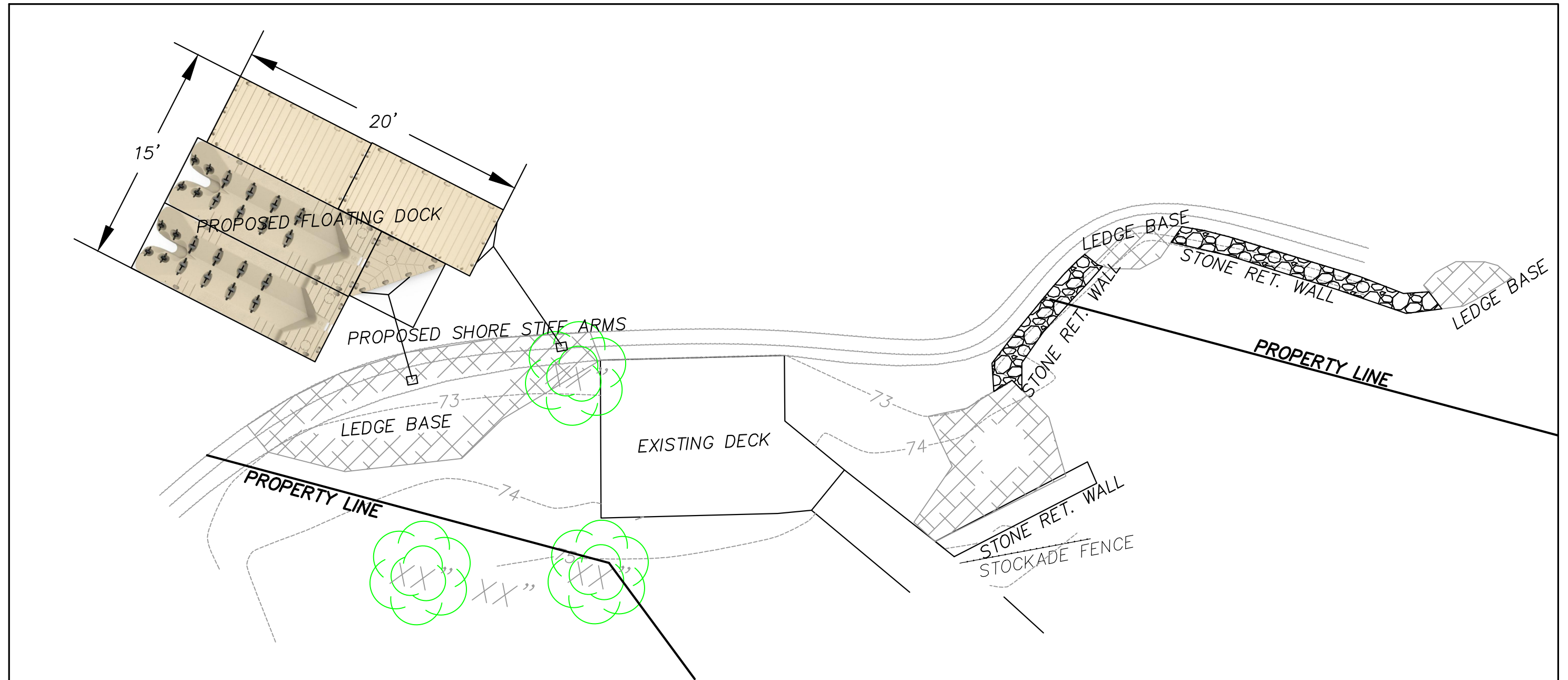
MILITARY & LAW ENFORCEMENT

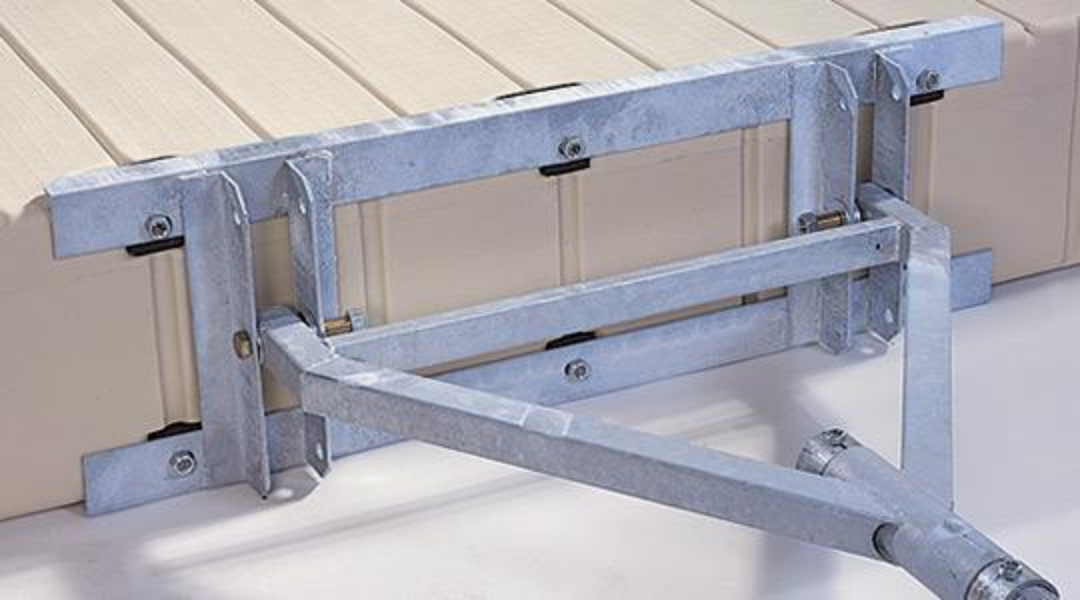
Whether your military or law enforcement department needs two slips or 2,000, a small dock or a complex marina with boat lifts, water and shore power, EZ Dock has dedicated and experienced distributors and dealers to help you navigate the process. We'll help you with new dock development or existing dock replacement.

**HEAVY DUTY STIFF
ARM EXAMPLE**



44 REVERE ROAD FLOATING DOCK APPROVAL









EXAMPLE OF PROPOSED BRACKET
STYLE TO BE MOUNTED DIRECTLY
INTO LEDGE AT 44 REVERE ROAD