

# THE NEW TUFTS LIBRARY

FEBRUARY 20, 2018  
**WEYMOUTH**  
MASSACHUSETTS



TAPPÉ  
ARCHITECTS









# THE NEW TUFTS LIBRARY

PROPOSAL FOR ARCHITECTURAL SERVICES

FEBRUARY 20, 2018

Cover Letter	1
Previous Project Experience	2
References and Reputation	3
Project Approach	4
Proposed Staffing	5
Firm Stability and Capacity	6

Price Proposal in Separate Envelope







TAPPÉ  
ARCHITECTS

TAPPÉ ARCHITECTS, INC.

*Principals*

CHARLES M. HAY, AIA

JEFFREY M. HOOVER, AIA

CÉSAR DEDIOS, AIA

CHRISTOPHER D. BLESSEN, AIA

*Associates*

JENNIFER LITTLEFIELD, AIA

MATTHEW BARNHART

*Principal Emeritus*

A. ANTHONY TAPPÉ, FAIA

TEL 617 451 0200

FAX 617 451 3899

WWW.TAPPÉ.COM

SIX EDGERLY PLACE

BOSTON, MA 02116

Paul Kalous AIA, Hill International  
330 Congress Street, 6th Floor  
Boston, MA 02110

February 20, 2018

Dear Mr. Kalous & Members of the Designer Selection Committee:

We are pleased to submit our qualifications for The New Tufts Library Project. We have been keenly aware of the initiative for library improvements to the Tufts Library for several years, have visited the building several times in addition to the walkthroughs that have been conducted, and have followed the development of the design through the MBLC grant application progress. As a result, our interest is increasingly heightened, and we are eager to participate in developing the project through final design, construction, and into service for the Weymouth community.

**Participatory Process**

We are committed to a collaborative and inclusive design and planning process that incorporates your goals and requirements and the concerns - and input of the community. This approach extends from a commitment to working together with the entire project team to make this process both effective and a positive experience for all participants. With the MBLC grant award and the support of the community leadership in hand, we look forward to working collaboratively with the Library Construction Committee on:

- Assuring that the plan continues to evolve to advance the goals established in Library Building Program.
- Heightened understanding of the latest ways that library facilities can respond to the emerging library service initiatives based on our extensive experience designing libraries, participating in the evolving dialog about the future of libraries at ALA, IFLA, and Library Journal Design Institutes and researching and teaching about the future of libraries at Harvard University.

**Extensive Relevant Expertise & Experience**

As you review our materials, please note the following strengths that we bring to your project:

**Unique Library Planning Expertise** – Our firm is recognized for our up-to-date understanding of trends and requirements in library design; we teach and lecture on these topics on an ongoing basis. Our library planning experience, which has yielded us a national reputation, has stemmed from extensive experience designing libraries in Massachusetts, New England and beyond.

**Extensive Public Building Experience** – We have completed scores of publicly funded projects in Massachusetts and understand the public bid process, and the constraints and opportunities of public construction, based on our 35-year focus on creating public building projects for municipalities. More than 90% of our portfolio is public construction.

**Unparalleled Achievements in Library Sustainable Design** - Our Athol Library renovation and expansion project in Athol, MA (a Carnegie grant library from 1915) achieved LEED certification at the highest level (Platinum). All of the libraries we have completed since 2008 have achieved or exceeded their LEED certification goals.

**Several New Library Buildings** – In the past 2 years we have opened 5 libraries, 2 renovations (20,000 GSF & 25,000 GSF)



# TAPPÉ'S COMPLETED PROJECTS FUNDED BY MBLC

Athol Public Library  
Acton Public Library  
Belmont Public Library  
Beverly Farms Library  
Beverly Public Library  
Billerica Public Library  
Bourne Public Library  
Edgartown Public Library  
Eldredge Public Library  
Goodnow Public Library  
Nevins Memorial Library  
New Bedford Public Library  
Newton Free Library  
Wayland Public Library  
Westhampton Public Library  
Wilbraham Public Library  
Worcester Public Library

and 3 new construction (15,500 GSF, 43,000 GSF and 60,000 GSF). These recently opened libraries incorporate the latest in library service initiatives, uniquely tuned to individual community expectations and aspirations. One of them received the highest recognition a library building can achieve – the combined **AIA/ALA Award for Excellence in Library Buildings**

**Library Systems Expertise** - The two largest libraries we just opened are each a part of a library system of multiple branches. The recently completed Boston Public Library Faneuil Branch Study is another example of a series of library designs we have completed for buildings that are part of a system. We understand the differences between individual libraries and library systems facilities.

**MBLC Experience** – We have completed more than a dozen designs for successful grant applications, ranging from the 2nd largest library in the Commonwealth (Worcester Public Library, 150,000GSF), to the 5,600 GSF Westhampton Public Library.

## Experienced Team

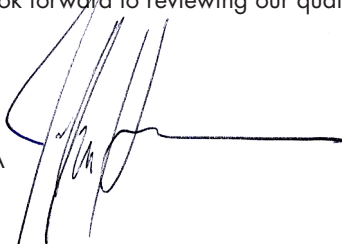
We have assigned 3 Owners and an Associate to this project. You will be working with senior staff throughout the design and construction process. Charlie Hay will be the Principal-in-Charge who will oversee the organization and management of the project internally. Chris Blessen, will be the Project Architect/Project Manager responsible for coordination of design activities and coordination with the Town and Library. Chris can be reached at cblessen@tappe.com or at (774) 274-2060. Jeff Hoover will be the Director of Library Design, participating in all aspects of planning and design, and Jen Littlefield will be the Construction Administrator/Quality Assurance.

We are committed to comprehensively exploring the potential for design of a facility that can deliver state-of-the-art library services. Our vision of the future Tufts Library includes contemporary library service spaces and information technologies integrated throughout. However, we also see patron spaces which will be thin on technology, but rife with service, comfort and delight - for the remaining spectrum of activities that patrons will want in a center of cultural understanding, civic interaction, and intellectual advancement - the future Tufts Library.

The Town of Weymouth and its representatives have our authorization to contact any of our previous clients or a team member's client for purposes of ascertaining an independent evaluation of our team's performance. We are very excited about the project and will commit our experts' time, our energy and our creative focus to the project immediately and throughout the project until it is complete. We look forward to reviewing our qualifications and our approach with you at an interview.

Sincerely,

Jeffrey Hoover, AIA







PREVIOUS PROJECT  
EXPERIENCE



## RECENT PROJECT HISTORY

The past decade has seen our firm work on multiple library projects of various sizes every year. We have been fortunate to design libraries in six states, most notably creating four libraries for the same municipal client in Virginia that garnered the highly sought after **AIA/ALA Library Building Award** in 2017. That same library planning, technology and interior design team would be working on the new Tufts Library.

This period has also seen the opening of several MBLC Grant recipient libraries (Athol, Edgartown and Westhampton), as well as studies generating accepted MBLC grant applications for four other libraries in the Commonwealth.

## ON-TIME & ON-BUDGET RECORD

At Tappé, we focus on this part of project delivery. We are extremely proud of the fact that all of our recent projects have been on time and on budget in their delivery for construction and our design related change order history has been less than or equal to 1% or less with our most current project at 1/2 of 1%.

## SUSTAINABLE & LEED EXPERIENCE

Every one of our recent projects has achieved a minimum of LEED Silver or the equivalent thereof (we use CHPS for school designs). In fact, the Athol Library is the first Carnegie library renovation/addition to achieve LEED Platinum, an achievement of which we are very proud.

Since 2010 our libraries have garnered 4 LEED Silvers, 3 Gold and 1 Platinum.

## TUFTS LIBRARY FUTURE

We understand that a new Tufts Library will be an extremely important building in the fabric of the Town of Weymouth. Although contemporary libraries are often characterized as “community centers,” we understand new libraries to be the “center of community” where cultural heritage is celebrated, people of all ages and backgrounds come together for self improvement, family advancement and community interaction focused on sharing ideas. It will be an active place - “the hub of all the hubbub” where citizens can come to redefine their futures or just relax with a good book in a comfortable, welcoming environment.

The character of the new Tufts Library will be a building that establishes its civic importance while simultaneously creating a welcoming atmosphere - a building that reflects community aspirations for the future, concurrent with understanding community roots and heritage. So, the design solution will be a balance of seemingly opposing factors that are woven together in single new expression. Creating just such buildings has been the hallmark of our practice since its inception and continues to be reflected in our latest library designs - buildings that are uniquely tuned to their communities - all locally relevant and at the same time widely recognized for design excellence.

## TUFTS LIBRARY AS A CREATIVE LEARNING ENVIRONMENT

Successful future libraries will be characterized by environments configured to support a “community of learners.” They will be distinguished from the stereotypical library of the past - characterized as a storehouse for information. Successfully embracing the paradigm shift from a book-centric identity to people-centric environments, they reinforce their roles as vibrant institutions in the community. This is part of our vision for your future and this vision is reinforced by our recent successes in library design.

As we work together to advance the design of the future Tufts Library, we see that we share with you a vision of a facility that is more than a vehicle for finding information, becoming the new place in the community where all patrons are uniquely able to:

- Actively **employ information** they harvest
- Dynamically **share ideas** inspired by the information garnered
- Improve and re-seed the information landscape by recording and **documenting new understandings** using digital text, audio and video as well as traditional means

While the spaces will have different attributes to meet different needs, they will all have the same goal in order to be successful modern learning spaces – they will address the need to **make people welcome and comfortable** while enveloping them in a resource-rich environment that facilitates individual advancement and personal transformation readying them for the challenges of the future.

**PROJECTS \$10-\$40 MILLION COMPLETED IN PAST 10 YEARS:** *following pages*





## MELROSE MIDDLE SCHOOL<sub>MELROSE, MA</sub>

*Client:* City of Melrose

*Role:* Architect of Record

*Building Use:* School

*Completed:* 2015

*Total Project Value:* \$47M

*Total Value of Construction:* \$42M

New Construction(220,000 GSF) Design, Bid, Build

Denise Gaffey, Director of Capital Planning

(781) 979-4194 dgaffey@cityofmelrose.org

*Included Team:* Jeff Hoover, Charlie Hay, Chris Blessen, Jen Littlefield

**CHPS Certified.** Construction of this middle school posed numerous technical challenges. Located in a flood plain, sub-soil conditions required ledge removal, structural fill and installation of pile foundations. Complex underground municipal utilities were maintained throughout construction. The new school is on a constrained site adjacent to the Melrose High School which remained open during construction. Together, the buildings offer a unified campus for grades 6 through 12. The middle school includes a varsity high school gym and 900 seat theater. Academic wings are organized into three teams per grade with a flexible project space at each grade level.



## CLYDE BROWN ELEMENTARY<sub>MILLIS, MA</sub>

*Client:* Millis Public Schools

*Role:* Architect of Record

*Building Use:* School

*Completed:* 2019 (Under Construction)

*Total Project Value:* \$44M (Est)

*Total Value of Construction:* \$39M (Est)

New Construction (90,000 GSF) Design, Bid, Build

Nancy Gustafson, Superintendent

(508) 376-7000 ngustafson@millisps.org

*Included Team:* Charlie Hay, Chris Blessen, Jen Littlefield

**CHPS Anticipated.** The Clyde Brown Elementary School is a New facility built to replace the existing school on the same site. The exciting forward thinking around the educational plan led to a design that will foster 21st century education with flexibility for the future. The key feature of the design is to deploy the media center out to the academic pods to create learning corridors that are expanded and usable for multiple modes of teaching. The school will host grades Pre-K through 5.





## GOODYEAR ELEMENTARY<sup>WOBURN, MA</sup>

*Client:* Woburn Public Schools

*Role:* Architect of Record

*Building Use:* School

*Completed:* 2011

*Total Project Value:* \$24M

*Total Value of Construction:* \$20M

New Construction (67,000 GSF) Design, Bid, Build

Mark Donovan, Superintendent (781) 979-4194

*Included Team:* Charlie Hay

**CHPS Verified.** This school serves 320 K-5 students and was designed on a very constrained, urban site posing challenging design considerations. The result is a contextual, efficient and thoughtful design; has variety of teaching spaces, easy community access, and full technology implementation. Sustainable measures include a children's garden with simple water collection tank. The design includes materials of complementary shades including metal panels, terra cotta panels, and a unique brick coursing pattern, creating a distinctive palette on the building exterior.



## WORCESTER PUBLIC LIBRARY<sup>WORCESTER, MA</sup>

*Client:* City of Worcester

*Role:* Architect of Record

*Building Use:* Library

*Completed:* 1995, 2002, 2011

*Total Project Value:* \$21M

*Total Value of Construction:* \$17.2M

New Construction (47,000 GSF) Renovation (103,000 GSF) D-B-B

Geoffrey Dickinson, Head Librarian (508) 799-1726

*Included Team:* Jeff Hoover

**AIA Western Massachusetts Chapter Design Award.** As the second largest public library in Massachusetts, the Worcester library is a significant civic building located on the perimeter of Worcester Common. The new stone façade is defined by the extension of a pre-existing arcade with glowing translucent stone cladding above and by an oval shaped bay. The interiors integrate public art through the use of elements such as art glass panels and decorative metal gates. Every aspect of the library is in a new and more convenient location and the character of these areas is imbued with a consistent design theme that creates an ambiance of lightness. A linear plan organization draws patrons from dual entrances along a “collection interface zone”—which features special lighting, furnishings and displays—to reading rooms on two levels that feature views of the Common.





## BROOKS LIBRARY NSU NORFOLK, VA

*Client:* Norfolk State University

*Role:* Library Architect

*Building Use:* Academic Library

*Completed:* 2012

*Total Project Value:* \$48M

*Total Value of Construction:* \$43M

New Construction (60,000 GSF) Design, Bid, Build

Anton V Kashiri VP of Facilities Management (757) 823-8011

*Included Team:* Jeff Hoover

**Leed Gold.** In junction with Moseley Architects and Portman Architects, Tappé lead the L.B. Brooks Library's interior design. The new Norfolk State University library is a student-focused facility strategically situated at the heart of the campus. Features include a 24/7 Internet cafe, 25 Collaborative Study Rooms, an African Art Museum and shelving for 600k print volumes. To keep up with changing university needs and service models, carrels are designed to be easily reconfigurable for alternate arrangements. Distributed on every floor are Reference and Help Desks that foster easy mobility - with heavy duty casters and adjustable height work surfaces - for endless customization. A large number of floor outlets are arrayed throughout the space to provide power for every option possible.



## FORRER LEARNING COMMONS BRIDGEWATER, VA

*Client:* Henrico County Public Libraries

*Role:* Library Architect

*Building Use:* Academic Library

*Completed:* 2019 (Construction Documents)

*Total Project Value:* TBD

*Total Value of Construction:* TBD

Addition/Renovation (43,000 GSF) Design, Bid, Build

Anne B Keeler, VP of Finance & Treasurer

(540) 828-5470 akeeler@bridgewater.edu

*Included Team:* Jeff Hoover, Shannon Wray

Originally built in 1964 with only minor changes since construction, the library had not kept pace with the current needs of an academic library. The College desired to transform their library to serve as a beacon on campus and be a place where individuals can come to the library to create, to imagine, to learn, and to produce meaningful research and projects. BCWH/Tappé embarked on the programming and data gathering phase of the project and worked closely with library staff and administration, to quickly establish the project's programmatic needs and design goals. Then the team engaged the students of Bridgewater in campus surveys and focus groups. As a result of these conversations, the design team was better able to understand the needs of the College.





## BRIDGEWATER TOWN HALL BRIDGEWATER, MA

*Client:* Henrico County Public Libraries

*Role:* Design Architect

*Building Use:* Library and Junior Achievement Finance Park

*Completed:* 2015

*Total Project Value:* \$9M

*Total Value of Construction:* \$7M

Renovation (25,000 GSF) Design, Bid, Build

Richard Thuma, Owner's Project Manager BH+A (617) 350-0450

*Included Team:* Jeff Hoover

A well-loved but dilapidated historic landmark, the Bridgewater Academy Building has been used for many purposes since its original life as a school. Standing vacant and nearly demolished, new life has been breathed into now stands prominently on the central square, adaptively reused as Town Offices. Now used daily by the community, The Academy Building does not just perform municipal functions - it is a symbol of resiliency and a catalyst for regrowth of a town steeped in history.



## MAYNARD HIGH SCHOOL MAYNARD, MA

*Client:* Town of Maynard

*Role:* Architect of Record

*Building Use:* Library

*Completed:* 2013

*Total Project Value:* \$40M

*Total Value of Construction:* \$36.65M

New Construction (114,000GSF) Design, Bid, Build

Jerry Culbert, School Building Committee (978) 897-2222

*Included Team:* Charles Hay, Jen Littlefield

This facility creates a grade 8 – 12 High School for 410 students. The project earned **CHPS "Verified Leader"** status and was the third school in Massachusetts to receive this recognition. The public use spaces such as the cafe, auditorium, gym, and administration at the front of the school and shared core spaces are embedded into defined academic areas. The co-location of visual arts, technology, and media resources reinforces collaboration, allowing cross pollination of ideas through multidisciplinary learning. The school has separate academic communities for grades 8 and 9 and integrates grades 10 – 12.





## VINSON OWEN ELEMENTARY WINCHESTER, MA

*Client:* Town of Winchester

*Role:* Architect of Record

*Building Use:* School

*Completed:* 2013

*Total Project Value:* \$25M

*Total Value of Construction:* \$21.3

New Construction (74,800 GSF) Design, Bid, Build

Robert F Deering (781) 721-7120

*Included Team:* Charlie Hay, Jen Littlefield

**CHPS Verified Leader.** The 74,800 SF Vinson-Owen Elementary School is a new neighborhood elementary school designed for grades K-5 located in the Town of Winchester. The school is designed to encourage parent and community access without disturbing the instructional spaces. The plan clearly illustrates this with the large shared spaces grouped near the entry. Grouping these spaces creates both a visual and physical connection in order to share resources and allow for the integration of project based learning. Predominately masonry exteriors with an accent of wood-toned phenolic rainscreen panels to highlight the main entry, Media Center, Cafeteria, and classrooms.



## STONEHAM MIDDLE SCHOOL STONEHAM, MA

*Client:* Stoneham Public Schools

*Role:* Architect of Record

*Building Use:* School

*Completed:* 2015

*Total Project Value:* \$38M

*Total Value of Construction:* \$32M

New Construction/Renovation (136,000 GSF) Design, Bid, Build

Chris Banos, Principal (781) 279-3802

*Included Team:* Charles Hay, Jen Littlefield

**CHPS Verified Leader.** This 136,000 SQFT Reno/Addition supplies an efficient building layout which locates a new entrance and the major assembly spaces (Gymnasium and Cafeteria) at the center, with classroom wings to either side. The footprint is constrained by lot lines and the existing middle school which remained in operation during construction. The new site plan considerably improves vehicular circulation and will reduce off-site traffic impact while increasing pedestrian safety





# FAIRFIELD PUBLIC LIBRARY HENRICO, VA

*Client:* Henrico County Public Libraries

*Role:* Design Architect

*Building Use:* Library

*Completed:* 2019 (Construction Documents)

*Total Project Value:* \$TBD

*Total Value of Construction:* TBD

New Construction (43,000 GSF) Design, Bid, Build

Gerald McKenna, Library Director (804) 501-1900 [gmckenna@henricolibrary.org](mailto:gmckenna@henricolibrary.org)

*Included Team:* Jeff Hoover: Library Design Director; Shannon Wray (BCWH) Lead Interior Designer; Sextant Group Tech consultant.

Following on the Success of 3 other Libraries in Henrico County, Tappé/BCWH was again chosen to undertake a new library for HCPL. The Fairfield Public Library is being designed for the unique urban/suburban community that it services. Planned for 43K sqft, the new design brings updated services and breathtaking features.







## LIBBIE MILL LIBRARY HENRICO, VA

*Client:* Henrico County Public Libraries

*Role:* Design Architect

*Building Use:* Library and Junior Achievement Finance Park

*Completed:* 2015

*Total Project Value:* \$20M

*Total Value of Construction:* 15.23M

New Construction (60,000 GSF) Design, Bid, Build

Gerald McKenna, Library Director (804) 501-1900 gmckenna@henricolibrary.org

*Included Team:* Jeff Hoover: Library Design Director; Shannon Wray (BCWH) Lead Interior Designer; Sextant Technology Consultant

**Leed Silver. 2016 AIA Richmond Honor Award Recipient. 2017 'Best Library in the Region Richmond Magazine.** The Library's civic presence at the heart of Libbie Mill is intended to contribute to the overall urban fabric of this vibrant, pedestrian-scaled community. The Library was designed to be a collective "living room" for the community. The expansive views into the Library help reinforce its presence as a civic beacon. Internally, the Library supports a range of individual and group work. In addition to having a great variety of meeting spaces, various places around the collections are configured for people to productively use information themselves, share information with others, complete projects (alone or in groups), and even create new information.



**"A Tale of Two Libraries" Libbie Mill & Varina Documentary:**  
<https://vimeo.com/chibimoku/henricopubliclibraries>





## VARINA AREA LIBRARY HENRICO, VA

*Client:* Henrico County Public Libraries

*Role:* Design Architect

*Building Use:* Library

*Completed:* 2016

*Total Project Value:* \$20M

*Total Value of Construction:* 15.1M

New Construction (43,565 GSF) Design, Bid, Build

Gerald McKenna, Library Director (804) 501-1900 gmckenna@henricolibrary.org

*Included Team:* Jeff Hoover: Library Design Director; Shannon Wray (BCWH) Lead Interior Designer; Sextant Technology Consultant

**Leed Silver. 2017 AIA/ALA Library building award winner. 2017 AIA Virginia Award of Merit. 2017 Golden Hammer Award - Historic Richmond.** Varina's citizens wanted an active library that provided a "next generation" of library services. To create a hub for learning with sufficient quiet space, the library features several unique learning spaces and programmatic elements that facilitate project-based learning pedagogies. More casual learning spaces are integrated throughout the library in the form of private and group study rooms outfitted with mobile, adaptable furniture to promote various learning, working, and collaborating styles. The library's design is rooted in the landscape and the history of the Varina district. The building and materials are reminiscent of the agrarian structures that once populated the area.



**"A Tale of Two Libraries" Libbie Mill & Varina Documentary:**  
<https://vimeo.com/chibimoku/henricopubliclibraries>







# ATHOL PUBLIC LIBRARY ATHOL, MA

*Client:* Town of Athol, MA

*Role:* Architect of Record

*Building Use:* Library

*Completed:* 2014

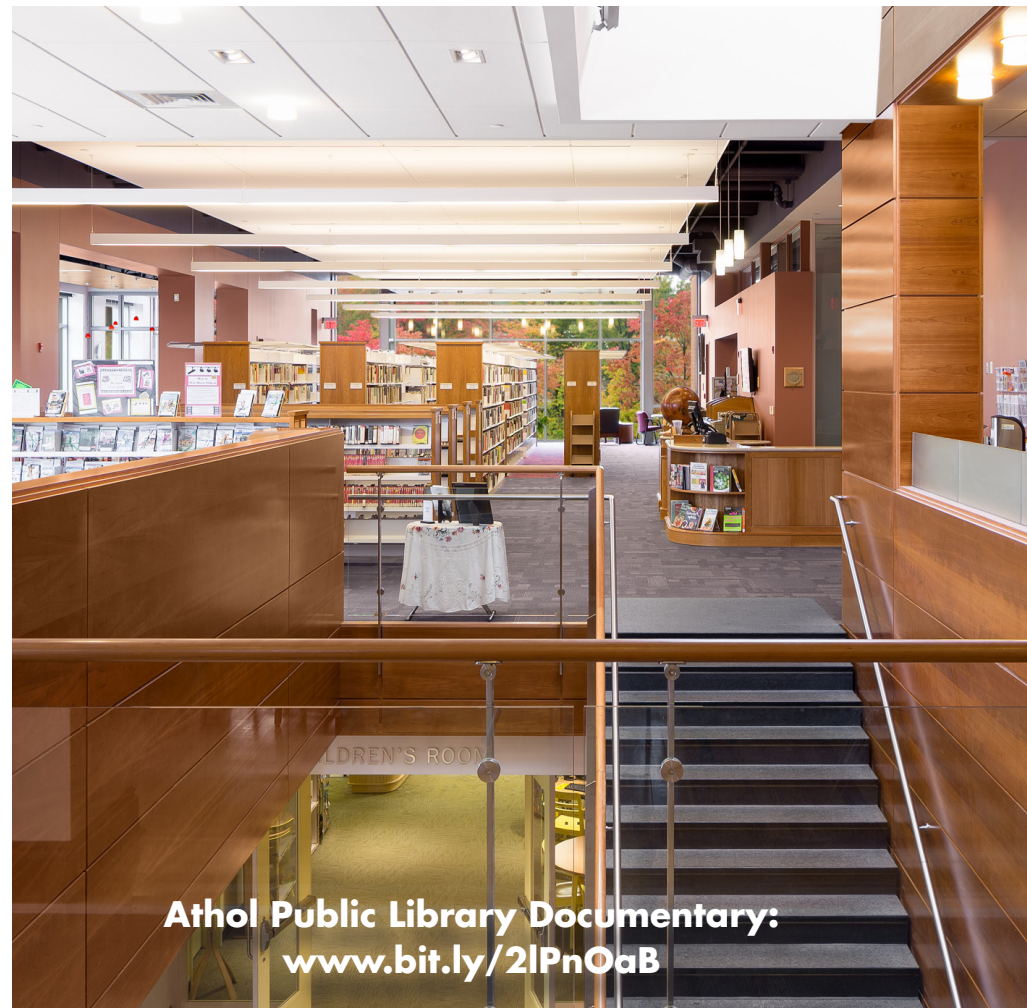
*Total Project Value:* \$8.5M

*Total Value of Construction:* \$6.72M

New Construction (15,000 GSF) Renovation (20,000 SQFT) DBB

Jean Shaughnessy, Library Director (978) 249-9515 eshaughnessy@hotmail.com *Included Team:* Jeff Hoover, Chris Blessen

**Leed Platinum.** Considered to be the “heart” of the community, the Athol Public Library is on a unique site with its 1918 entry on Main Street in the downtown commercial district, and its 1965 addition facing the Millers River. In designing a new addition to meet the increased needs of the Library, Tappé Architects pulled inspiration from the simplified Classical Revival Style of the original building. A glass entry link connects the old with the new, giving shape once again to the original structure that was “buried” in additions. The building then reaches toward the river in a very directional manner, offering abundant views through large expanses of glass. By both complementing and contrasting with the original structure, this energy efficient addition pays homage to the forward-looking nature of this community.



**Athol Public Library Documentary:**  
[www.bit.ly/2IPnOaB](http://www.bit.ly/2IPnOaB)





# EDGARTOWN PUBLIC LIBRARY EDGARTOWN, MA

*Client:* Town of Edgartown, MA

*Role:* Architect of Record (Celia Imrey, Imrey Studio Lead Designer)

*Building Use:* Library

*Completed:* 2016

*Total Project Value:* \$9M

*Total Value of Construction:* \$7.75M

New Construction (15,000 GSF) Design, Bid, Build

Chris Scott, Library Trustee (774) 930-0921 csottmv@gmail.com

*Included Team:* Jeff Hoover

**Leed Silver.** The Edgartown Public Library was designed to meet the unique challenges of its location on Martha's Vineyard with Category 5 hurricane resistance and summer vacation population surges that increase library activities tenfold. Located on a property contiguous with an elementary school, the library is also configured to accept a daily influx into children's and teens spaces during the off-season/school year. Additionally, the community meeting room doubles as an art gallery for one of the most important historical book and painting collections on the island. Each wing of the crisp building features signature "lighthouse" clerestories and soaring interior spaces that bring daylight deep into the interior volumes. In Edgartown, where widow's walks and lighthouses abound, the design took cues from the local architecture to inform the overall massing and design. The building is in a historic district subject to aesthetic and design restrictions.





"I have heard from many library directors that there is always the anxiety that architects will ignore their needs and concentrate instead on their own creative architectural vision, to the detriment of the project. That was certainly not something we encountered in our experience with Tappé. All of the Tappé architects and designers we worked with on our project were focused very specifically on our needs..."

Debbie Barchi, Director, Barrington Public Library

"Tappé demonstrated superb skill, sensitivity, thoroughness, and design aesthetics in their work ...I enthusiastically endorse them for design and programming work for libraries across the spectrum...Tappé was able to combine all these talents with a facility for visualization that ultimately guided the [our library] towards design elements and a design framework that have proven immensely valuable in the formal design and construction process."

University Librarian, a large state college



REFERENCES  
& REPUTATION



## NANCY VINCENT

KEENE PUBLIC LIBRARY  
LIBRARY DIRECTOR  
(603) 352-0157  
nvincent@ci.keene.nh.us

## DENISE GAFFEY

CITY OF MELROSE OFFICE OF PLANNING AND COMMUNITY  
DEVELOPMENT - DIRECTOR AND CITY PLANNER  
(781) 979-4194  
dgaffey@cityofmelrose.org

## JERRY MCKENNA

HENRICO COUNTY PUBLIC LIBRARIES  
LIBRARY DIRECTOR  
(804) 652-3250  
jaspreet.pahwa@dc.gov

## RICK POMROY

EDGARTOWN PUBLIC LIBRARY  
OWNERS PROJECT MANAGER  
(508) 456-4232  
rpomroy@pomroyassociates.com

## JASPREET PAHWA

WASHINGTON DC PUBLIC LIBRARIES  
DIRECTOR OF CAPITAL PLANNING & CONSTRUCTION  
(FORMER OWNER'S PROJECT MANAGER, VARINA LIBRARY)  
(202) 503-5391  
jaspreet.pahwa@dc.gov

*Evidence Of Minimum Qualifications: All Tappé Leadership team members are registered Architects in the state of Massachusetts and are MCPPO Certified. Registration numbers can be found on their respective resume pages and MCPPO certificates can be found at the end of the proposal.*

## RECENT AWARDS FOR LIBRARY DESIGN

### **VARINA AREA LIBRARY** HENRICO, VA

2017 AIA/ALA Library Building Award  
2017 AIA Virginia Award of Merit  
2017 Golden Hammer Award (Best New Construction) - Historic Richmond

### **LIBBIE MILL LIBRARY** HENRICO, VA

2017 Best Library in the Region - Richmond Magazine  
2016 Honor Award for Excellence in Architecture - AIA Richmond Chapter

### **FAIRPORT PUBLIC LIBRARY** FAIRPORT, NY

2017 Library of the Year - Rochester Regional Libraries

### **ATHOL PUBLIC LIBRARY** ATHOL, MA

2014 LEED Platinum Historic Carnegie Library  
Only LEED Platinum Distinguished Historic Library in US

### **KILTON PUBLIC LIBRARY** WEST LEBANON, NH

2011 Library Journal, New Landmark Libraries - Honorable Mention  
2011 Library Journal "20 best libraries to study for models and insights (for) coming trends"

### **OSWEGO PUBLIC LIBRARY** OSWEGO, NY

2009 AGC Build NY - Design Excellence  
2009 PLNY - Excellence in Historic Preservation

### **THE PEQUOT LIBRARY** SOUTHPORT, CT

Connecticut Preservation Awards, CT - Trust for Historic Preservation, 2007  
Award of Merit - Historic Restoration

### **WORCESTER PUBLIC LIBRARY** WORCESTER, MA

AIA Western Massachusetts Chapter Design Award, 2002  
Worcester Design Award, 2002  
Silver Hammer Award, 2002

### **ACTON MEMORIAL LIBRARY** ACTON, MA

National Commercial Builders Council Merit Award, 2000  
NAHB 2001 Award of Excellence





# PROJECT APPROACH & PRELIMINARY SCHEDULE



# NEXT GENERATION LIBRARY SERVICES FOR WEYMOUTH CITIZENS

We understand that the new Tufts Library will be infused with many new opportunities for the people of Weymouth, from expanded children's services to numerous group study places, to support for large community gatherings as well as programmed activities for all demographics, to a nationally significant local history center. All of these spaces and activities will be supported with information technology that supports current and anticipates future uses.

We see tremendous opportunity to develop these (and other) aspects in the next phases of design:

- Space for children that is not just a library but is an **active early learning center**, employing traditional learning opportunities while advancing concepts of learning through interactive and introspective play - in an environment that inspires children's imaginations and encourages their creativity

- Community meeting room and conference/meeting rooms that **enhance the sharing of ideas** in comfortable and uplifting settings
- Spaces that support informed dialog between small groups of patrons (as well as one-to-one tutoring) in ways that **encourage conversation while providing acoustical separation** - spaces that encourage collaborative thinking, while still providing for quiet focused concentration
- Young Adult space that becomes the preferred destination place for teens after school - with a productive homework center as well as a supervised hangout place.
- Create not only physical space that houses a nationally set of artifact as part of a center of past cultural heritage, but also employing technology to **celebrate heritage with engaging interactive displays** as part of the "welcome zone" of the library and including "one-button studio" capability so that, together with Abigail Adam's letter to her son, your grandparent's audio interview with your teen aged child can

be easily captured with high quality and archived for future reference.

We have accomplished comparable goals on all of our latest library projects. Our team is ready to apply the skills gained from these to the Tufts Library project.

## SUSTAINABILITY

All of our recent projects have been high achievers relative to sustainability initiatives. A fundamental part of our approach to achieving this kind of success for the Tufts Library will be to collectively identify and confirm your sustainability goals early in the process. With this affirmation, we can then reboot the design process with confidence that the fundamental configuration of the architecture is supportive of these goals.

## ENHANCING THE LIBRARY BUILDING PROGRAM

We know that libraries are highly specialized building types, configured in response to particular and flexible performance criteria articulated in the building program document. **We are experts in developing and/or refining library building programs.** We also know that the program document cannot itemize and describe absolutely everything that is intended to be in the library and all that is desired from the library. Understanding the limits to program modification that the MBLC Construction Grant establishes, we will be able to work with library services advocates to extract the maximum potential from the current program and represent our joint understandings in 3 dimensional graphics that communicate to the Library, the Library Construction Committee and the MBLC. Our experience of not only working with library building programs, but also writing them for many of our recent clients, will be advantageous to the project as the library building design emerges in response to the programmatic criteria.





## COST MODELS

We are strongly committed to acting as stewards of the public funds committed by our clients. Cognizant of established budgetary expectations from the MBLC grant process, we will work with you to adhere to these cost projections. Our cost consultant, with extensive public library experience, will develop the various cost projections as required in the RFP. Each time our team of architects and engineers will review and vet the cost model to confirm thoroughness and accuracy.

Once our team is in agreement, we will review the projections with you. We expect that along the way adjustments to the design may be necessary to stay within budget. If so, we will work collaboratively with you to make value based decisions. Our decades of experience will allow us to match design to budget.

## TECHNOLOGY INFUSED LIBRARY

Employing our awareness of the broad spectrum of ways that digital technologies influence contemporary library user (and library staff) experience, we will work with the Library to determine the appropriate level of technology for all spaces. Some of the factors we consider:

- Incorporating infrastructure for the library's evolving digital information portals
- Enhancing accommodations for high bandwidth digital production stations recognizing that much of future authorship and communications are multi-media

- Ubiquitous provisions for patron-owned technology so that patrons can use their own devices anywhere in the library
- A backbone for enhanced Audio/Visual content included for presenting information in numerous select areas of the library – from digital signage to large format touch screen interfaces for browsing and downloading digital titles
- Charging stations accommodate the selection of portable information devices (eBook readers, tablet PCs, Laptops) that patrons can self-check with a swipe of their library card.
- Integration of automated materials handling systems for sorting of books
- Accommodating express check-out kiosks in association with the Library's collection management system

## LOW-VOLTAGE SYSTEM DESIGN & INTEGRATION

In addition to incorporating infrastructure for information technologies, the new Tufts Library will be outfitted with a wide variety of low-voltage building systems that will aid in efficient operation and improved customer experience for the completed project. These include audiovisual systems, building security, CCTV, door access control, data network, lighting dimming systems, automated window shade controls and building automation systems.

We are well-versed in the technical requirements of each of the various approaches to procurement. Whether provided and installed by the Library under separate contract or included in the base bid construction contract, we understand our responsibility is to manage the process, working closely with





Town and Library staff to seamlessly integrate these systems into the final design.

### SCHEMATIC DESIGN

We have refined our library schematic design process through several recent projects to thoroughly and efficiently produce the updated Schematic Design drawings that describe the project for the design phases ahead.

### BUILDING SUPPORT

Additionally, we work with the various constituent population groups to help build confidence that the design as it evolves continues to meet their needs and aspirations for the future library. We are experienced leading focus groups, creating design review surveys and hosting community design presentations/dialogs to garner public input and build support. Together with participating in these events we analyze the feedback for meaningful observations and identify salient commentary for incorporation in the design.

*"This is such an impressive analysis of feedback. I'm going to share it with the leadership team at BPL too because I think it's worth everyone reading as we strategize for how we can work with the community to align our goals a bit better."*

Christine Schonhart, Boston Public Library  
Director, Library Services, Branches

### DESIGN DEVELOPMENT

Continued and increased engagement of interdisciplinary design staff is vital as documents are developed, engineering disciplines are progressed and project details are defined. Informed by opportunities and challenges identified during site analysis, envelope and systems are designed and coordinated along with refinement of the site plan and design as a responsive bridge from outside to in.

Budget and schedule are confirmed, and a value engineering process is used to explore system and construction approach options. Project specifications are outlined during this phase so that the selection of materials and systems are reviewed and determined prior to preparation of construction documents. Design reviews are routine and crucial to responsive development of project detail in these design phases. Symbiotic design thinking at all scales during is absolutely key to the Tappé process as a project matures through design development.

A final design development package will attain resolution of the all systems and overall architecture, code and cost, overall coordination between all disciplines, FFE and AV integration (while bid as separate packages, are designed and planned as integral and responsive to the rest of the project). 3D visualization tools are used to explain and understand all aspects of the projects moving forward, to reassure intent and overall compliance with Library and County standards.



## **CONSTRUCTION DOCUMENTS BIDDING & CONTRACTS**

The Contract Documents, which fully describe the site and building design construction requirements to the contractor for bidding and construction purposes, are completed during this phase. Final specification and bidding documents are prepared and final interior finish materials, colors, patterns and equipment are completed.

Periodic progress printings and progress review meetings give the architectural and engineering team opportunity to coordinate the design and documents throughout this phase. Each printing is also an opportunity for an incremental quality control review for the team and the owner. You can be assured that the decisions made by you will be represented in the final documents.

## **QUALITY ASSURANCE REVIEWS**

Our team benefits from a formal in-house principal-lead peer review process for quality assurance, following many QA reviews by the internal team. This formal oversight increases efficiency and clarity of documents, effecting a more efficient process during construction. These reviews are performed to check technical solutions and to identify areas where the clarity and completeness of the construction documents can be improved. An outstanding record of very low design team change orders during construction is a testament to the value of our quality assurance efforts.

## **BIDDING & CONTRACTS**

We will assist throughout the bidding phase. At the prebid conference we will answer the contractors' questions regarding the synopsis of the work including bid documents, instructions to bidders, bid form, general conditions, additive and addendum items. Throughout the process we will issue any addenda to clarify the documents. Contractors enjoy bidding our work because of the willingness to answer their questions before the bid date and thoroughness of our construction documents. This process allows us to receive very competitive bidding from filed sub-bidders and general contractors.

We will assist with bid documents distribution, conduct the pre-bid meeting and issue any required addenda. After evaluation and recommendation of the lowest responsible, responsive bidder, the construction contract is processed.

## **CONSTRUCTION ADMINISTRATION**

Construction administration of the new Tufts Library will be led by a Jen Littlefield, dedicated senior architect with significant background and expertise. She will be introduced to the project team early in the process, working in parallel to provide technical assistance and quality assurance reviews. Late in design development the CA architect's commitment increases, affording her ample existing knowledge of project goals. This increases efficiency to firm work flow without sacrificing insight from early design intent. *"We introduce dedicated senior CA architect staff to the project team early in the process.. "*

## **INTEGRATED PROCESS OF FURNITURE DESIGN, BIDDING & INSTALLATION**

The furniture and audiovisual systems will be scheduled and procured as a series of separate packages and installed after construction ends. However, developing these requirements in parallel with other programming efforts allows us to achieve a more integrated, holistic design solution.

In parallel with the design of the building, we will develop the design for all loose furnishings, shelving and equipment that will be procured as part of the FF&E bid package. The design of this package will commence early in the design process to ensure the building spaces are adequately sized and proportioned to meet the needs of the furniture. Further, the design of the building systems (primarily the electrical and low voltage systems) will be coordinated the furniture and equipment.

As the building design progresses, the furniture design will be refined and finalized. We will work with the library and stakeholders to review options for finishes and colors of the furniture that are integrated with the building design themes. We will develop and maintain our proprietary database of the furniture selections to aid in the final documentation for bidding or procurement. This data base will also be used to establish and maintain a cost estimate that will be routinely updated.

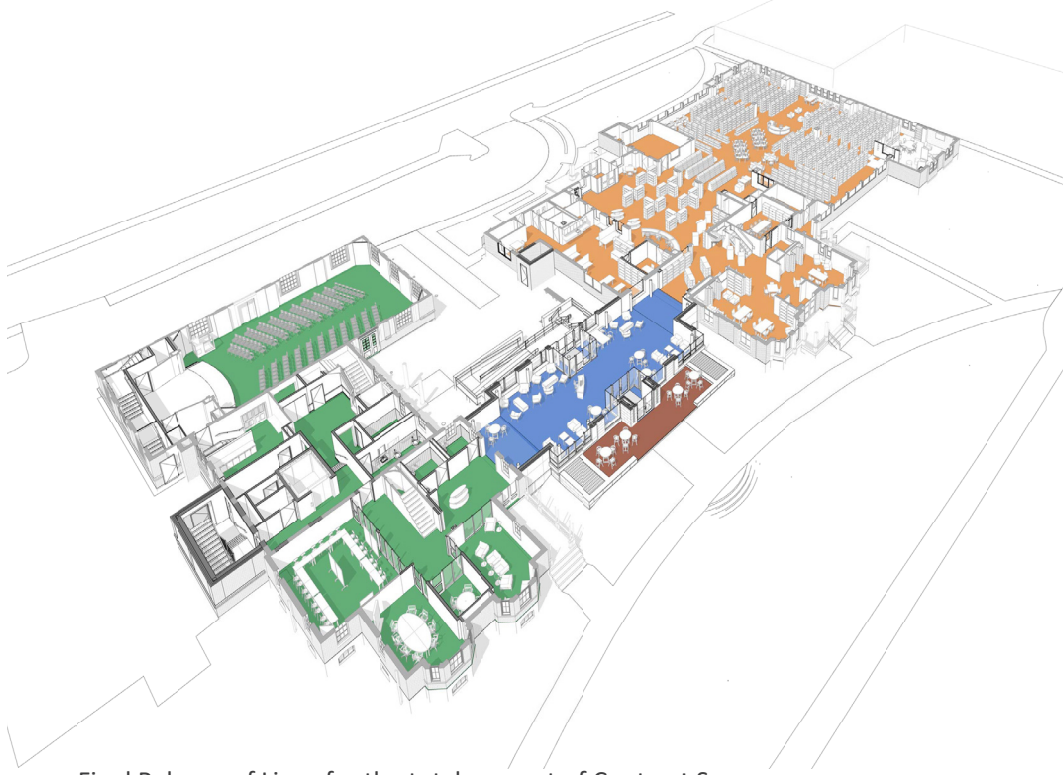
We understand in tremendous detail the intricacies of the outfitting phase of a library project and will lead the effort to develop critical path schedules for the installation of the shelving, collections, furniture, owner-provided equipment and AV systems through the duration of the project.

## **PROJECT CLOSEOUT**

Following Substantial Completion, our team will receive from the Contractor the following items and materials which will be collectively referred to as the Close-Out Documents.

- Punch List showing all items identified by the Contractor and Administrator, certified by Contractor as being completed
- Properly executed Consent of Surety for Final Payment

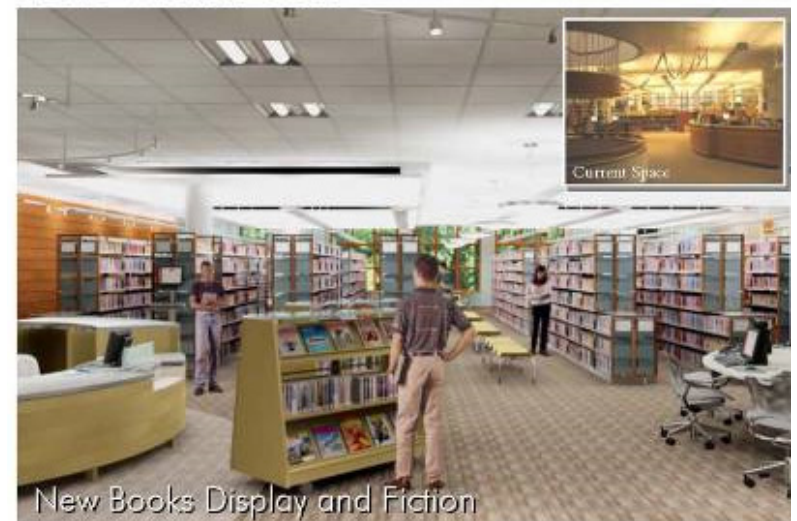
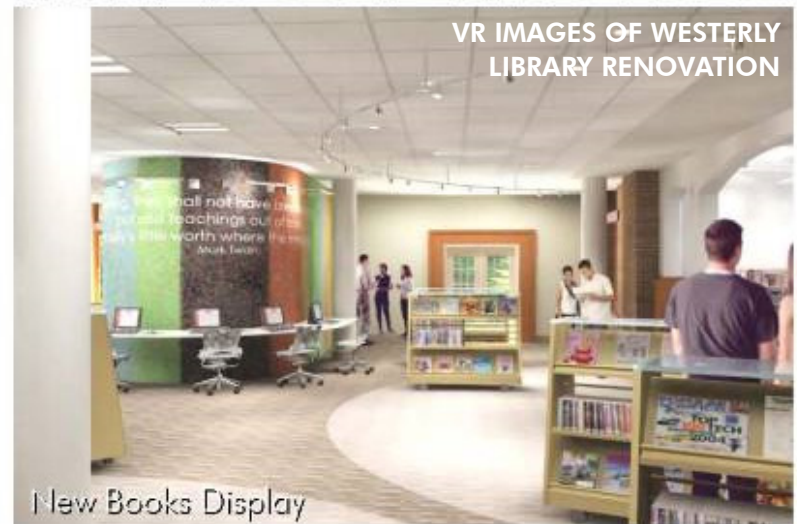




- Final Release of Liens for the total amount of Contract Sum
- Record Drawings and record specifications as per the Contract Documents
- Warranty and maintenance information as required by the Contract Documents
- Extra stock materials and special tools as provided in the Contract Documents
- Final Accounting of all Change Orders for the project

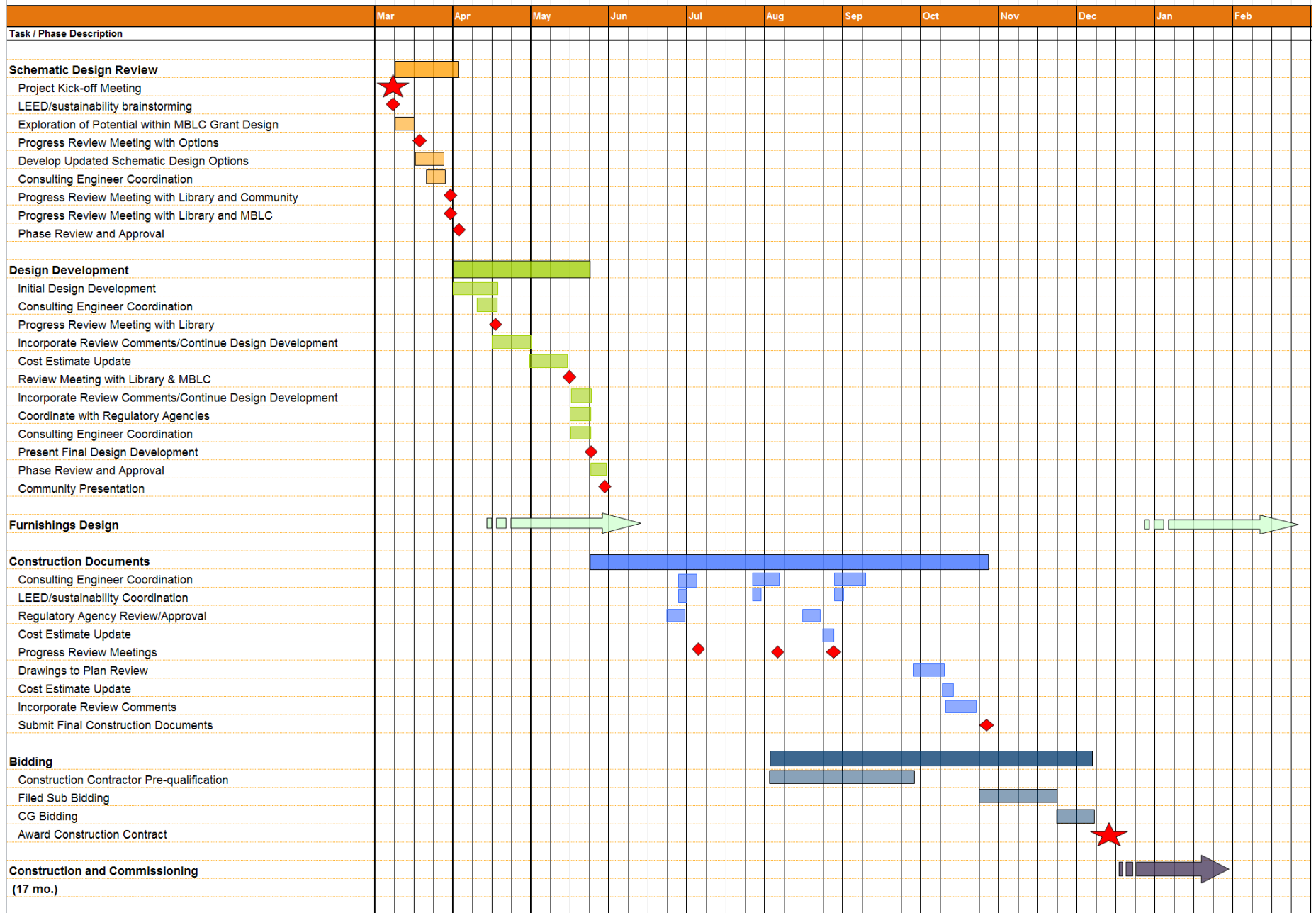
In addition to the items listed, the Close-Out Documents will include proof that all equipment and maintenance demonstrations required by the Contract Documents have been successfully completed by the Contractor for the Owner's staff. Equipment demonstrations will be scheduled by the Contractor, with the Owner given adequate notice to ensure that proper personnel may attend.

We will review, and transmit to the Owner, the Close-out Documents package. We will advise the Owner of the Close-Out Documents received by the Contractor and transmitted to the Owner, and any outstanding items which may prevent the project from being closed out and Final Payment made to the Contractor. Should all prerequisites for project close-out be satisfied, we will then recommend to the Owner in writing that the Final Payment be made to the Contractor.





### Preliminary Project Schedule











PROPOSED  
STAFFING





## TOWN OF WEYMOUTH WEYMOUTH PUBLIC LIBRARIES



**TAPPE**  
ARCHITECTS

CHARLES M. HAY, AIA, MCPPO  
CHRIS BLESSEN, AIA, MCPPO, LEED AP  
JEFFERY M. HOOVER, AIA, MCPPO  
JENNIFER LITTLEFIELD, AIA, MCPPO, LEED AP

PROJECT EXECUTIVE/ MANAGING PRINCIPAL MA #8628  
PROJECT MANAGER \*PRIMARY CONTACT\* MA #50685  
LIBRARY DESIGN DIRECTOR MA#7835  
CONST. ADMIN/QA/QC MA #20318

### 1. INTERIOR DESIGN/FF&E

BCWH  
RICHMOND, VA

SHANNON WRAY, CID, LEED AP  
CID #0412000787

### 2. CIVIL

NITSCH ENGINEERING, INC.  
BOSTON, MA

STEVEN VENTRESCA, LEED, PE  
MA #46872

**SDO REGISTERED WBE**

### 3. STRUCTURAL

ROOME & GUARRACINO, LLC  
SOMERVILLE, MA

REGINALD ROOME II, PE  
MA #31949

### 4. MECH/P/FP

ENGINEER'S DESIGN GROUP  
BOSTON, MA

SUSAN WISLER PE, LEED  
MA #46614

**SDO REGISTERED MBE**

### 5. ELECTRICAL

ARCHITECTURAL ENGINEERS  
BOSTON, MA

NICK FERZACCA, PE, LEED  
MA #17454

**SDO REGISTERED WBE**

### 6. GEOTECHNICAL

WESTON & SAMPSON  
PEABODY, MA

CHRIS PALMER, PE  
MA #49828

### 7. GEOENVIRONMENTAL

WESTON & SAMPSON  
PEABODY, MA

FRANK RICCIARDI, PE, LSP  
MA PE #41689  
MA LSP #5586

### 8. TECHNOLOGY

THE SEXTANT GROUP  
BOSTON, MA

JOSEPH BOCCHIARO, PHD  
CTS-D, CTS-I, ISF-C

### 9. SPECIFICATIONS

KALIN ASSOCIATES, INC  
NEWTON, MA

MARK KALIN, FAIA, FCSI, LEED  
MA #4657

### 10. LANDSCAPE

WARNER LARSON, INC.  
BOSTON, MA

DAVID WARNER, ASLA  
MA #1209

### 11. COST ESTIMATING

A.M. FOGARTY  
HINGHAM, MA

PETER TIMOTHY  
PRESIDENT

### 12. HAZ MAT

UNIVERSAL ENVIRONMENTAL  
CONSULTANTS  
FRAMINGHAM, MA

AMMAR DIEB, PRESIDENT  
AD MA 900326

 = PREVIOUSLY TEAMED ON PROJECTS WITH TAPPE





**CHARLES M HAY, AIA, MCPPO**  
PROJECT EXECUTIVE, MANAGING PRINCIPAL

***Summary***

Charles Hay has managed a number of large complex publicly bid projects including historic additions and restorations, libraries and schools. His designs for the Aldrich Museum & Batchelder School have won multiple design awards. Mr. Hay is responsible for staffing and operations at Tappé architects, and is focused on excellence in the production and delivery of architectural services.

Charlie will oversee the project and provide direction gleaned from decades of successful public project completions in Massachusetts

***Professional Experience***

- Principal, Tappé Architects, Inc., Boston, MA (2000-Present)
- Associate, Tappé Architects, Inc., Boston, MA (1997-2000)
- Project Manager, Tappé Architects, Inc., Boston, MA (1994-1997)
- Associate, JCA Architects, Boston, MA (1988-1994)
- Project Architect/Manager, SRK Architects, Philadelphia, PA (1986-1988)

***Education***

- Master of Architecture, University of Pennsylvania, 1986
- Dales Traveling Fellowship, 1985  
Nominated for S.O.M. Traveling Fellowship, 1985  
Architecture in the Schools Program, AIA Philadelphia
- Bachelor of Arts, Urban Studies, Brown University, 1982

***Registration & Affiliations***

- Massachusetts Architect Registration #8628
- National Council of Architectural Registration Boards

***Representative Project Experience:***

Melrose Public Library  
Melrose HS Learning Commons  
Lunenburg Middle/High School  
Southbridge Middle/High School  
Melrose Middle School  
Stoneham Middle School  
L.D. Batchelder Elementary School  
Maynard High School  
Marlborough Middle School  
Goodyear Elementary School, Woburn, MA  
Clyde Brown Elementary School, Millis, MA





## **CHRISTOPHER BLESSEN, AIA, LEED AP, MCPPO** **PROJECT MANAGER, PROJECT ARCHITECT**

### ***Summary***

As project manager, Chris will be your point of contact for the daily activities of the work as the project progresses beyond the initial phases of programming and design. He will lead Tappé's internal team as well as the consultants, and will be responsible for coordinating all project communications and documentation. He will have practical responsibility for assuring that decisions are made in a timely fashion and the schedule and budget are maintained.

As a Tappé Principal, Chris' experience working with public and private owners and many regulatory agencies, including local advocacy groups, gives him an understanding of and commitment to the multitude of interested parties that come together for a project to be successful. The variety of projects types he has worked on has brought Chris to place of deep passion for lifetime learning. His efforts thus far have been toward creating environments that are rich in resources and encourage a wide degree of learning and information sharing between individuals.

### ***Professional Experience***

- Principal, Tappé Architects, Inc., Boston, MA (2016-Present)
- Associate, Tappé Architects, Inc., Boston, MA (2013-2016)
- Designer, Tappé Architects, Inc., Boston, MA (2007-2013)
- Designer, BKA Associates, Inc., Brockton, MA (2004-2007)

### ***Education***

- Bachelor of Architecture, Boston Architectural College, 2010

### ***Registration & Affiliations***

- Registered Architect in Commonwealth of Massachusetts # 50685
- Registered Architect in District of Columbia # ARC102787
- AIA Committee on Architecture for Education member

### ***Representative Project Experience:***

Gleason Public Library, Carlisle, MA  
Athol Public Library, Athol, MA  
Melrose Public Library, Melrose, MA  
Wayland Public Library, Wayland, MA  
Seekonk Public Library, Seekonk, MA  
Barrington Public Library, Barrington, RI  
Kilton Public Library, Lebanon, NH  
Galvin Middle School, Wakefield, MA  
Goodyear Elementary School, Woburn, MA





## **CHARLES M HAY, AIA, MCPPO** **DIRECT OF LIBRARY DESIGN**

### ***Summary***

Jeffrey Hoover specializes in programming, planning and design of learning environments, with particular focus on libraries, as well as master plans and feasibility studies for colleges and universities. Mr. Hoover has been actively involved with architectural conferences and symposiums throughout the country, speaking on: future libraries, historic renovations and additions, and the influence of technology on the practice of architecture. He has been an instructor for Harvard University's Graduate School of Design's Office of Executive Education, teaching Library Planning and Design, since 1999.

Mr. Hoover regularly presents seminars and lectures for ALA , NELA, ABX, IFLA and other conferences. Jeff is a committee member of the Architecture for Public Libraries Committee for the American Library Association.

Jeff will be the principal in charge of library planning and design. Jeff will be particularly involved in the process of turning the written program into actual architectural expression and will guide much of the early staff and community outreach efforts in parallel with Chris' responsibilities. Should a contingency be required, Chris will be able to act as a back-up as he and Jeff have shared this responsibility in the past.

### ***Professional Experience***

- Principal, Tappé Architects, Inc., Boston, MA (2000-Present)
- Associate, Tappé Architects, Inc., Boston, MA (1984-2000)
- Designer, Office of Thallon & Edrington, Eugene, OR (1983-1984)

### ***Education***

- Bachelor of Architecture, University of Oregon, 1983

### ***Registration & Affiliations***

- MA Architect Registration #7835 (As well as NH, RI, OH & VT)
- National Council of Architectural Registration Boards Cert. # 57509
- Member by appointment to the Architecture for Public Libraries Committee of the American Library Association

### ***Representative Project Experience: Over 30 libraries including:***

Edgartown Public Library, Edgartown, MA	Varina Area Library, Henrico, VA
Athol Public Library, Athol, MA	NSY Brooks Library, Norfolk, VA
Libbie Mill Library, Henrico, VA	Wethampton Public Library, MA
Worcester Public Library, Worcester, MA	Beverly Public Library, Beverly, MA





## **JENNIFER LITTLEFIELD, AIA, LEED AP, MCPPO** CONSTRUCTION ADMINISTRATION/QUALITY ASSURANCE

### ***Summary***

Over the past 7 years with Tappé, Jen has transformed our approach to project management, quality control and construction administration. Jen has been involved in the planning and design of a variety of institutional projects with a particular focus on libraries, schools and other civic/municipal facilities. Mrs. Littlefield has experience managing all phases of design and working with contractors, OPMs and owners to achieve results that rise above expectations. Jen's background with complex projects on undeveloped sites as well as additions and renovations coupled with her top tier field experience assures good control throughout the project.

Jen will be the project manager for all phases. While these early phases are more guided by Chris and Jeff, we include Jen, so that there is a higher level of continuity in the team and every detail is covered with the initial ideas discussed. Jen will be less visible to you as the client, but is always working very hard in the background to make sure deadlines are met and the appropriate level of staffing is maintained throughout the project. Should a contingency be required, Chris and Jeff will be able to act as a back-up.

### ***Professional Experience***

- Associate, Tappé Architects, Inc., Boston, MA (2014-Present)
- Project Manager, Tappé Associates, Inc., Boston, MA (2010-2014)
- Associate, Mashek MacLean., Vineyard Haven, MA (200-2010)

### ***Education***

- Roger Williams University / 2000 / Bachelor of Architecture

### ***Registration & Affiliations***

- MA Architect Registration #20318
- LEED AP Certified

### ***Representative Project Experience:***

Goodyear Elementary School, Woburn, MA  
Vinson-Owen Elementary School, Winchester, MA  
Maynard High School, Maynard, MA  
Galvin Middle School, Wakefield, MA  
Melrose Middle/High School, Melrose, MA  
Keene Public Library  
Fitchburg Public Library



# SHANNON WRAY, CID, LEED<sup>AP</sup>

SENIOR INTERIOR DESIGNER, BCWH



BCWH Architects  
1840 W Broad St # 400  
Richmond, VA 23220

An Associate at BCWH, Shannon is our senior interior designer and provides design leadership for programming, space planning, lighting, acoustics, finish materials, color selections, and furniture / furnishings.

Building on her knowledge of your processes and requirements, she will have a design leadership role in the programming and planning phase, working closely with Tappé's Jeff Hoover and the other team members. She will remain continuously involved during the subsequent phases of the work through construction and occupancy. As with Libbie Mill, Varina and Fairfield Libraries, she will lead our interior design and furniture design efforts.

## EDUCATION

Bachelor of Fine Arts in Interior Design,  
Virginia Commonwealth University, (1999)

## CERTIFICATIONS

Certified Interior Designer (CID) #0412000787  
LEED AP Building Design + Construction Accreditation

## PROFESSIONAL AFFILIATIONS

Council of Educational Facility Planners International

## RELEVANT EXPERIENCE

### LIBRARIES

Gleason Public Library, Carlisle, MA\*  
North East Library, North East, MD\*  
Varina Area Library, Henrico, VA\*  
Libbie Mill Library, Henrico, VA\*  
Gayton Public Library, Henrico, VA\*  
Fairfield Area Library, Henrico, VA\*  
Atlee Public Library, Hanover County, VA\*  
Lynchburg Main Library Renovation, Lynchburg, VA\*  
Alexander Mack Memorial Library at Bridgewater College, Bridgewater, VA\*  
Staunton Public Library Space Needs Study, Staunton, VA\*  
Waynesboro Public Library, Waynesboro, VA\*  
Petersburg Public Library, Petersburg, VA  
Fintel Library at Roanoke College, Salem, VA

*\*Indicates work in partnership with Tappé Architects*

### GOVERNMENT FACILITIES

Henrico County Government Facilities Master Plan, Henrico, VA  
Henrico County Cafeteria Renovation, Henrico, VA  
Renovations to the Virginia State Capitol, Richmond, VA  
Renovations to the General Assembly Building, Richmond, VA  
Junior Achievement of Central Virginia Finance Park, Richmond, VA

### EDUCATIONAL EXPERIENCE

New Hanover High School, Hanover, VA  
Lee Davis High School Addition / Renovations, Hanover, VA  
Chesterfield Career & Tech Center, Adaptive Re-Use/Reno, Chesterfield, VA  
Battlefield Elementary School, Spotsylvania, VA  
Spotswood Elementary School, Spotsylvania, VA  
Chancellor Elementary School, Spotsylvania, VA  
Twin Hickory Elementary School, Henrico, VA  
Ladysmith Elementary School, Caroline, VA  
Donohoe Elementary School, Henrico, VA  
Wyatt Middle School Addition / Renovations, Greenville, VA  
Meadowbrook High School Addition / Renovations, Chesterfield, VA  
Manchester Specialty Center Additions / Renovations, Chesterfield, VA  
New Fluvanna High School, Fluvanna, VA  
New Cosby Road High School, Chesterfield, VA  
VCU Pollack Building Planning Study, VCU Center for the Arts, Richmond, VA



## Steven Ventresca, PE, LEED AP BD+C

Project Manager



### Years of Experience

- 20 in industry
- 11 at Nitsch Engineering

### Registration

- Massachusetts: Professional Engineer (Civil) #46872, 2007
- Massachusetts: Soil Evaluator #2922, 2004
- LEED Accredited Professional, 2008
- OSHA (10-hour) Certified

### Education

- B.S., Civil Engineering, Northeastern University, 1998

### Professional Affiliations

- Middleborough Conservation Commission
- Member since June 2007
- Co-Vice Chairman, January 2011 - present
- Member of Boston Society for Civil Engineers Section (BSCES)
- Member of American Society of Civil Engineers (ASCE)

Steve has 20 years of experience in civil engineering, focused on site layout design, stormwater management design, and roadway/bike path design. Steve's wide range of experience includes commercial and residential developments, academic facilities, and roadway design and traffic safety improvements. He has gained experience in providing municipal project reviews and has excellent communication skills, which allows him to help his clients with everything from written reports to presentations to local Conservation Commissions, Planning Boards, and Zoning Boards.

### Representative Projects

**Eastham Public Library, Eastham, MA:** Project Manager for civil engineering services for the renovation and expansion of the Eastham Public Library. Assisted with design of the site layout, grading, and utilities. Responsible for the preparation and submission of a Notice of Intent for permitting the project with the Town of Eastham Conservation Commission. Assisted in the preparation of finalized Construction Documents.

**Stoughton High School, Stoughton, MA:** Project Manager for utility design, drainage design, and permitting associated with the new high school currently in design. Responsible for providing permitting services for the project with the Stoughton Planning Board and Public Works Department. Will provide Construction Administration services, including site observations for general site conditions and erosion/sediment control.

**Scituate Public Safety, Scituate, MA:** Project Engineer for civil engineering services for the new Public Safety Building in Scituate related to the design and permitting of the septic system. Assisted with the permitting with the Conservation Commission, Planning Board, and Board of Health. Assisted with the construction administration of the site features including access roadways and parking areas and utilities. Stormwater management system focused on Low Impact Development techniques including rain gardens and gravel wetlands.

**Maynard High School, Maynard, MA:** Project Engineer for utility and drainage design services for a new high school building. Provided permitting services for the project by submitting a Notice of Intent and Stormwater Report to the Conservation Commission. Provided a supporting role in obtaining Planning Board Approval.

**Hillside Elementary School, Needham, MA:** Project Manager for utility design, drainage design, and permitting associated with the new elementary school. Provided feasibility studies of five local schools to help identify a location for the new Hillside School. Provided engineering services to adjust the Federal Emergency Management Agency flood plain line to coincide with the local flood plain elevation. Provided permitting services involving submitting a Notice of Intent to the Conservation Commission for the demolition of site buildings to prepare the site for the new school. The project will be permitted through the Stoughton Planning Board, Public Works Commission, and Conservation Commission. Will provide Construction Administration services, including site observations for general site conditions and erosion/sediment control.

### Representative Projects - continued

**Concord-Carlisle Regional High School, Concord, MA:** Senior Project Engineer / Project Manager for utility, drainage design, and permitting of the new Regional High School. Provided permitting services by submitting a Notice of Intent to the Division of Natural Resources and permitted the project through the Concord Planning Board, Public Works Commission, and the Zoning Board of Appeals. Provided Construction Administration services, including site observations for general site conditions and erosion/sediment control.

**Penn Brook School, Georgetown, MA:** Project Manager for utility design, drainage design, and permitting associated with the new elementary school. Provided permitting services by submitting a Notice of Intent to the Conservation Commission. The project included extensive use of Low Impact Development (LID) techniques for drainage systems to meet the local Conservation By-law requirements for stormwater rate and volume. Provided Construction Administration services, including site observations for general site conditions and erosion/sediment control.

**Walpole Fire Station, Walpole, MA:** Project Manager responsible for designing of a stormwater management system for the new fire station facility, and for providing site layout, grading, and utility connections. Also providing layout for the Temporary Operations Center to house the fire station personnel during construction. Providing construction documents for bidding.

**United Teen Equality Center, Lowell, MA:** Project Engineer for civil engineering services associated with a 75,000-square-foot building expansion for the first LEED building to be proposed in Lowell. Provided site design services, including schematic design of sustainable design concepts such as roof water run-off collection for grey water re-use.

**Faneuil Hall Glass Pavilions, Boston, MA:** Project Manager for civil engineering services, providing schematic design and construction documents for the construction of three glass pavilions in Faneuil Hall. Evaluated existing site conditions and utilities, and provided a Schematic Design Site Utility Plan based on those conditions. Designed the site utilities including sewer, water, and stormwater treatment and discharge. Permitted the project through the BWSC and providing construction administration services.

**Needham Schools, Facility Study, Needham, MA:** Project Engineer for civil engineering services associated with a facility study for Needham Schools. Researched the existing site conditions at Hillside Elementary School, Mitchell Elementary School, and Pollard Middle School. Performed site visits and met with the Needham Public Facilities Department. Reports included site observations such as area uses, wetlands, pervious vs. impervious surfaces, parking, accessibility, utilities (sewer, water, and drainage), and site permitting.



7. Brief Resume of ONLY those Prime Applicant and Sub-Consultant personnel requested in the Advertisement. <u>Include Resumes of Project Managers</u> . Resumes should be consistent with the persons listed on the Organizational Chart in Question # 6. Additional sheets should be provided only as required for the number of Key Personnel requested in the Advertisement and they must be in the format provided. By including a Firm as a Sub-Consultant, the Prime Applicant certifies that the listed Firm has agreed to work on this Project, should the team be selected.	
a. Name and Title Within Firm: Reginald Roome II, P.E.	a. Name and Title Within Firm:
b. Project Assignment: Partner	b. Project Assignment:
c. Name and Address Of Office In Which Individual Identified In 7a Resides: Roome & Guarracino LLC 48 Grove Street-Suite 301 Somerville, MA 02144 MBE <input type="checkbox"/> WBE <input type="checkbox"/>	c. Name and Address Of Office In Which Individual Identified In 7a Resides:    MBE <input type="checkbox"/> WBE <input type="checkbox"/>
d. Years Experience: With This Firm: <u>13.0</u> With Other Firms: <u>26</u>	d. Years Experience: With This Firm: _____ With Other Firms: _____
e. Education: Degree(s) /Year/Specialization <b>A.A.S. Civil Technology, 1976 University of New Hampshire-Durham, N.H.</b> <b>B.S. Civil Engineering, 1978 Worcester Polytechnic Inst.-Worcester, MA</b> <b>M.S. Civil Engineering, 1981 Worcester Polytechnic Inst.-Worcester, MA</b>	e. Education: Degree(s) /Year/Specialization
f. Active Registration: Year First Registered/Discipline/Mass Registration Number <b>1984 / Structural Engineer / MA # 31949</b> <b>Professional Engineer (Structural): New Hampshire, Massachusetts, Vermont, Connecticut, Maine, Pennsylvania</b>	f. Active Registration: Year First Registered/Discipline/Mass Registration Number
g. Current Work Assignments and Availability For This Project: <b>Concord Public Library-Concord, MA</b> <b>Medford Police Station-Medford, MA</b> <b>East Forest Branch, Springfield Public Library-Springfield, MA</b> <b>Greybarn Housing-Amityville, NY</b> <b>We are available for this project. Our office is <u>not</u> at capacity</b>	g. Current Work Assignments and Availability For This Project:
h. Other Experience and Qualifications Relevant To The Proposed Project: (Identify Firm By Which Employed, If Not Current Firm): <b>Mr. Roome co-founded Roome &amp; Guarracino in early 2005, after 24 years at LeMessurier Consultants. He is experienced in structural steel, concrete, timber and masonry structures as well as investigations and renovations. LL Bean Hunt/Fish Store, Freeport, ME; Hingham Fire Station; Wenham Town Hall and Police; Hasten Memorial Library; Milton Public Library; Dudley Public Library; Kilton Public Library; Walpole Public library; Foxboro Public Library; Dracut Town Hall; Athol Public Library; Lincoln Town Hall, Arlington Fire Stations; Osterville Fire Stations; Townsend Library and Senior Center; Weston Police Station, Newton Fire Station 10; Northborough Public Library; So. Hadley Public Library; YMCA of Martha's Vineyard; Edgartown Public Library</b>	h. Other Experience and Qualifications Relevant To The Proposed Project: (Identify Firm By Which Employed, If Not Current Firm):



8b. List Current and Relevant Work By Sub-Consultants Which Best Illustrates Current Qualifications In The Areas Listed In The Advertisement (Up To But Not More Than 5 Projects For Each Sub-Consultant). Use Additional Sheets Only As Required For The Number Of Sub-Consultants Requested In The Advertisement.					
Sub-Consultant Name: Roome & Guarracino LLC					
a. Project Name and Location Principal-In-Charge	b. Brief Description Of Project and Services (Include Reference To Relevant Experience)	c. Client's Name, Address And Phone Number. Include Name Of Contact Person	d. Completion Date (Actual Or Estimated)	e. Project Cst (In Thousands)	
				Construction Costs (Actual, Or Estimated If Not Completed)	Fee For Work For Which Firm Was/Is Responsible
(1) <b>Athol Public Library</b> <b>Athol, MA</b>  <b>R. Roome</b>	<b>Engineering Design Services – New two story, structural steel framed addition to the existing wood and masonry framed historic library. Major renovations to the existing library building</b>	<b>Tappé Architects</b> <b>Six Edgerly Place</b> <b>Boston, MA</b> <b>Mr. Jeff Hoover AIA</b> <b>617-4251-0200</b>	2013	6,000	40
(2) <b>Kilton Public Library</b> <b>Lebanon, NH</b>  <b>R. Roome</b>	<b>Structural Engineering Design Services –New single-story steel and heavy timber framed town public library building with partial mechanic basement.</b>	<b>Tappé Architects</b> <b>Six Edgerly Place</b> <b>Boston, MA</b> <b>Mr. Jeff Hoover AIA</b> <b>617-4251-0200</b>	2010	4,500	30
(3) <b>Uxbridge Fire Station</b> <b>Uxbridge, MA</b>  <b>R. Roome</b>	<b>Structural Engineering Design Services –New two-story steel framed fire station with masonry training tower.</b>	<b>Context Architecture</b> <b>68 Harrison Avenue</b> <b>Boston, MA</b> <b>Mr. Jeff Shaw AIA</b> <b>617-423-1400</b>	2018	6,000	45
(4) <b>Edgartown Public Library</b> <b>Edgartown, MA</b>  <b>R. Roome</b>	<b>Structural Engineering Design Services –New two-story steel building with attached single story children's wing and attached meeting room/art display wing.</b>	<b>Tappé Architects</b> <b>Six Edgerly Place</b> <b>Boston, MA</b> <b>Mr. Jeff Hoover AIA</b> <b>617-4251-0200</b>	2013	7,000	45
(5) <b>Walpole Public Library</b> <b>Walpole, MA</b>  <b>R. Roome</b>	<b>Structural Engineering Design Services –New two-story steel framed town public library building with green roof.</b>	<b>LLB Architects</b> <b>161 Exchange St.</b> <b>Pawtucket, RI 02860</b> <b>Mr. Drayton Fair AIA</b> <b>401-421-7715</b>	2011	6,000	45



# Susan Wisler, PE, LEED AP

Principal | Chief Mechanical Engineer

## QUALIFICATIONS

With 23 years of engineering experience, Ms. Wisler is the director of mechanical engineering at AEI. She is experienced in the design of sustainable repairs, rehabilitation and new mechanical HVAC, plumbing and fire protection systems for all building types, including public, private, state and federal clients, in the academic, higher education, healthcare, hospitality, government, military, R&D, and transportation industries. Ms. Wisler has extensive experience with sustainable design using LEED rating tools, is familiar with BIM and Revit applications, and is responsible for all mechanical engineering designs produced by AEI.

## EXPERIENCE

### Dubois Library Café, University of Massachusetts, Amherst

Chief mechanical engineer. Complete MEP renovation of a 1,700 SF space into a new take-out style café with seating for approximately 30 people. The café is located on the ground floor and caters to a high volume of foot traffic. The project complied with Chapter 149 requirements and included completely new plumbing and HVAC systems to serve the new café counter equipment and spaces, as well as an entirely new lighting design.

### Cobb Library, Truro, Mass.

Chief mechanical engineer for the complete renovation of the historic Cobb Library originally constructed in 1912 for year-round use by the Truro Historical Society. New systems included high velocity HVAC to provide archival storage environment while preserving the historic fabric of the original building. The historical society uses this renovated facility for research, archival storage, and display of maps and historic documents.

### North Brookfield Town House, North Brookfield, Mass.

Chief mechanical engineer for the complete mechanical system replacement throughout a certified historic town hall. The new systems included both heating and air conditioning with special attention required to preserve the historic façade while introducing a vapor barrier.

### Berkshire Museum, Pittsfield, Mass.

Chief mechanical engineer for a mechanical upgrade to the 1902 science, history and art museum located in downtown Pittsfield. New mechanical systems were designed to maintain a controlled environment throughout the first and second floors, and conventional HVAC systems designed for comfort were installed in the basement exhibit areas. A new fire protection system and architectural finishes were installed concurrent with the mechanical upgrades.



## EDUCATION

Bachelor of Science  
**Mechanical Engineering**  
University of New Mexico

## REGISTRATIONS

### Mechanical Engineering

Massachusetts #46614  
Connecticut #27135  
Rhode Island #9127  
New Hampshire #13888  
South Carolina #18761  
Louisiana #35798

## AFFILIATIONS

American Society of Heating and  
Refrigeration Engineers

US Green Building Council

American Council of Engineering  
Companies

# Nick Ferzacca, PE, LEED AP

Principal | Chief Electrical Engineer

## QUALIFICATIONS

With more than 30 years of experience, Mr. Ferzacca is responsible for all electrical designs produced by AEI, including power distribution, lighting, fire alarm, communication cabling and security systems. He is also responsible for coordinating all trades, review of shop drawings for constructability, and review of construction issues to streamline project schedules. Nick is a sustainable design specialist and former vice chair of the ASHRAE SPC 189 Committee responsible for new high performance Green Building standards. As a LEED accredited professional, he has prepared documentation for buildings receiving LEED Silver and Gold certifications, and is an expert in alternative energy designs including photovoltaic, wind and cogen installations. He is extremely familiar with mechanical and electrical systems in buildings, has an extensive background with 149a projects, and serves as project manager on many of Architectural Engineers' public and private sector projects, many of range in construction value from \$500k to \$30M.

## EXPERIENCE

### Wayland Public Library, Wayland, Mass.

Chief electrical engineer responsible for the electrical engineering portion of a feasibility study for new construction. The electrical scope includes new electrical service, DDC controls, emergency lighting with battery ballasts, interior LED lighting, an analog addressable fire alarm system, and security measures including intrusion detection alarms, card-access, and CCTV.

### Worcester Blackstone Gateway Visitor Center, Worcester, Mass.

Project manager and chief electrical engineer. Responsible for design of all MEP/FP systems including LED lighting with daylight harvesting, site and accent lighting, PV systems, pellet boiler system including radiant floor heating, and central BMS system. The newly constructed \$9M facility is comprised of an 8,000 SF, one-story visitors center with historical exhibit space, multipurpose meeting space, DCR offices, and restroom facilities, which constructed on a five-acre site. Site design includes parking, picnic gathering, irrigated landscaped areas, illuminated decorative site frames and a 6,500 SF PV pavilion with glazed 50kW, photovoltaic skylight. roof structure.

### The Boat House at Canal Dock, New Haven, Conn.

Project manager and chief electrical engineer. Designed new site electrical service and distribution systems; interior lighting with automatic controls for main lobby entrance and other building feature areas; exterior building and platform lighting; addressable fire alarm system with speaker/strobe units; security and CCTV surveillance for exterior doors/windows; wall-mounted kiosks. The \$41M, 32,000 SF boat house includes offices and classrooms for cultural and historic organizations, exhibitions, and meeting spaces.



# James B. Shannon, PE, LEED AP

Department Head | Plumbing and Fire Protection



## EDUCATION

Master of Science  
**Lighting**  
Rensselaer Polytechnic Institute

Bachelor of Science  
**Electrical Engineering**  
University of Notre Dame

## REGISTRATIONS

**Electrical Engineering**  
California #E17454  
Connecticut #23999  
Maine #11392  
Massachusetts #43208  
New Hampshire #12152  
Rhode Island #8820

## AFFILIATIONS

Illuminating Engineering Society (IES)  
ASHRAE/USGBC/IES SPC 189,  
Standard for High Performance  
Green Buildings  
IES New England  
ACEC/Massachusetts, Building  
Engineering Committee

## QUALIFICATIONS

A registered fire protection engineer with more than 16 years experience, Mr. Shannon specializes in the design engineering of plumbing and fire suppression systems. His experience includes design, code compliance, team supervision, peer review, construction administration, and construction oversight. Well-versed in sustainable design principles, Mr. Shannon is responsible for all plumbing and fire protection engineering produced by Architectural Engineers.

## EXPERIENCE

**Fitchburg Library Renovations, Fitchburg, Mass.**

Plumbing and fire protection department head. Responsible for the plumbing and fire protection system narratives, including review of available existing conditions documents, evaluation of existing fire protection and plumbing systems in the library, and review of cost estimates prepared by an independent cost consultant. In addition, assisted with preparation of grant materials submitted to the MPLCP.

**Billerica Memorial High School, Billerica, Mass.**

Senior fire protection engineer. Provided fire protection, construction administration, and construction control services for a new 335,000 SF high school in Billerica, Mass. Design of the new sprinkler and standpipe systems included new fire service, wet sprinkler, dry sprinkler, and standpipe systems. Double-checked valve assemblies, fire department connections, performed hydraulic calculations and wrote project specifications. Reviewed and approved all plumbing work.

**Sharon Town Hall Offices and Fire Station, Sharon, Mass.**

Mr. Shannon is the plumbing and fire protection department head for the design of new construction and renovated spaces within the combined Sharon Town Hall and Fire Station. The project involves accessibility components, space allocation, and an existing conditions assessment. The project is currently on-hold.

**Bunker Hill Community College, Campus Charter School, Chelsea, Mass.**

Plumbing and fire protection department head for MEP/FP renovations in approximately 5,000 SF of existing space at a charter school on the Chelsea campus of Bunker Hill Community College. Fire protection design included revised sprinkler layouts enabling the reconfiguration of classrooms by adding or removing walls. Plumbing activities involved the addition of a kitchenette sink, a new washer and dryer unit, and converting an existing restroom into a unisex, accessible facility with fixtures configured for use by children. AEI performed design and construction-phase services.



## EDUCATION

Bachelor of Science  
**Mechanical Engineering**  
Worcester Polytechnic Institute

Master of Science  
**Fire Protection**  
Worcester Polytechnic Institute

## REGISTRATIONS

**Fire Protection**  
Massachusetts #47830  
Florida #80862  
Missouri #201503992

## AFFILIATIONS

US Green Building Council  
American Council of Engineering  
Companies



## CHRISTOPHER PALMER, PE, GE

### BACKGROUND

2018-Present  
Senior Technical Leader  
Weston & Sampson

2010-2018  
Project Manager  
Weston & Sampson

2003-2010  
Senior Project Engineer  
Geotech Solutions, Inc.

2000-2003  
Project Manager  
GeoDesign, Inc.

### EDUCATION

1999  
Master of Science  
Civil / Environmental Engineering  
Concentration in Geotechnical  
Engineering  
University of Massachusetts,  
Lowell

1996  
Bachelor of Science  
Civil / Environmental Engineering  
University of Massachusetts, Lowell

### PROFESSIONAL REGISTRATION

Professional Engineer:  
Massachusetts No. 49828  
Oregon No. 72849PE  
Washington No. 40718

Professional Geotechnical  
Engineer:  
Oregon No. 72849PE

### PROFESSIONAL CERTIFICATION

Radiation Safety  
Nuclear Density Gauge

Christopher has over 20 years of specialized civil and geotechnical engineering design and management experience for a wide range of municipal, commercial, industrial and residential projects. He has coordinated and performed field investigations and laboratory testing programs; provided engineering analyses and design; prepared technical reports; and provided construction observation and administration for projects involving slope stability evaluation and stabilization, shallow and deep foundation capacity, retaining wall design, settlement analyses, preload and surcharging, shoring, storm water infiltration, pavement design, and seismic evaluations.



### SPECIFIC PROJECT EXPERIENCE

**Maynard High School, Maynard, Massachusetts.** Geotechnical project manager and engineer for a new two-story 85,000-square-foot high school building and associated site improvements including new roadway and parking areas, storm water facilities, and athletic field improvements. Prepared and managed site investigations, laboratory testing, geotechnical analyses, and technical report preparation. Managed construction monitoring and consulting services throughout earthwork and foundation construction.

**Galvin Middle School, Wakefield, Massachusetts.** Geotechnical project manager and engineer for a new two-story 90,000-square-foot middle school building. Provided geotechnical investigations, analyses, and recommendations in two phases to evaluate feasibility and provide recommendations for design. Geotechnical site considerations included undocumented fill and buried organic soils in the proposed building footprint and site development areas. Recommended pressure injected footings for support of the building and first floor slabs. Provided the design and construction teams with geotechnical engineering support and managed observation of geotechnical related aspects of foundation construction and earthwork including over-excavation and stabilization of organic and peat soils in roadways and artificial turf athletic fields.

**Stoneham Middle School, Stoneham, Massachusetts.** Geotechnical project manager and engineer for a new two-story 50,000-square-foot middle school. Geotechnical considerations included several feet of undocumented fill, existing utilities in the proposed building footprint, and presence of environmental contaminants. Coordinated geotechnical and environmental field work and laboratory testing, completed engineering analyses and a technical report including recommendations for the proposed site development. Recommended compacted stone columns for improvement of the existing fill to support conventional shallow foundations and slab on-grade and reduce potential excavation and disposal of contaminated soils. Provided the design and construction teams with geotechnical engineering support and managed observation of geotechnical related aspects of earthwork, ground improvement, and foundation construction.

**UMass Power Plant Demolition, Amherst, Massachusetts.** Assisted with geotechnical aspects of the Power Plant demolition project including attendance of project meetings, field observations, earthwork associated with foundation demolition and removal, and slope stability analyses. Provided the design and construction team with geotechnical related options and recommendations for earthwork, slope construction, and erosion protection.

**UMass Coal Storage Facility Redevelopment, Amherst, Massachusetts.** Geotechnical project manager and engineer for a feasibility study evaluating redevelopment of a portion of the former coal storage facility with an electric power substation. The primary geotechnical consideration for redevelopment was differential settlement associated with up to 12 ft. of undocumented fill and buried debris across the site. Provided feasibility-level geotechnical recommendations and relative costs for foundation alternatives including deep foundations, ground improvement, and fill removal and replacement.

**Cedarwood School Improvements, Portland, Oregon.** Geotechnical project manager and engineer for various site improvements including building demolition, new stormwater infiltration systems, and seismic retrofitting and underpinning of existing structures. Observed subsurface explorations, prepared a site-specific seismic hazard study, and provided recommendations for design and construction of drilled micro-piles for underpinning of existing spread footings. Also provided recommendations for design and construction of new infiltration swales, trenches, and pervious pavements.

**Portland Adventist Academy Campus Redevelopment, Portland, Oregon.** Geotechnical project manager and engineer for design of campus improvements including upgrades to an existing gymnasium structure, construction of a new two-story 100,000-square-foot school building, and associated site improvements including stormwater infiltration systems and athletic fields. Observed subsurface explorations, completed infiltration testing, prepared a site-specific seismic hazard study, and provided geotechnical recommendations for design and construction of foundations, retaining walls, and various infiltration systems.

**Various Projects for Concordia University Campus Expansion, Portland, Oregon.** Geotechnical project manager and engineer for numerous projects for the Concordia University Campus Expansion. Projects included a new three-story 74,000-square-foot library building, student housing buildings, and athletic complex encompassing two city blocks, throwing sports center and maintenance facility. Completed project management, engineering analyses, report preparation and field activities from investigation through construction. Geotechnical aspects of the project included compressible near-surface soils, turf drainage, demolition and backfill of numerous residential basements, wet weather construction and stormwater infiltration.





## FRANK RICCIARDI, PE, LSP

### BACKGROUND

2014-Present  
Vice President  
Weston & Sampson

2010-2014  
Senior Associate  
Weston & Sampson

2007-2010  
Team Leader  
Weston & Sampson

2002-2007  
Project Manager  
Weston & Sampson

2001-2002  
Project Manager  
Jacques Whitford, Co.

1993-2001  
Project Manager  
Arthur D. Little, Inc.

1992-1993  
Engineering Intern  
MWRA

### EDUCATION

1998  
Master of Science  
Environmental Engineering  
Tufts University

1993  
Bachelor of Science  
Civil Engineering  
Worcester Polytechnic Institute

### PROFESSIONAL REGISTRATION

Licensed Site Professional:  
Massachusetts No. 5586

Professional Engineer:  
Massachusetts No. 41689

Certified Mold Remediator, IAQA

Certified Operator - Industrial  
Wastewater Systems Grade 4I:  
Massachusetts

### PROFESSIONAL CERTIFICATIONS

Municipal Vulnerability  
Preparedness (MVP) Certified  
Provider

Frank is a registered Professional Engineer and Licensed Site Professional with more than 20 years of experience in project management, environmental engineering, remediation system design, and hazardous waste site assessments. He has special expertise in innovative technology implementation for field investigations and remediation. Frank's extensive experience encompasses the design, installation, and operations and maintenance of remediation systems, and the preparation of multimedia sampling plans, quality assurance plans, and health and safety plans.



### SPECIFIC PROJECT EXPERIENCE

**Galvin Middle School, Wakefield, Massachusetts.** Lead environmental engineer and Licensed Site Professional for the construction of the new Galvin Middle School in Wakefield at a site with urban fill material. Performed environmental investigations to appropriately handle soil and groundwater during construction. Oversaw the completion of required Massachusetts Contingency Plan (MCP) response actions including Phase I Initial Site Investigation and Phase II Comprehensive Site Assessment, achieving regulatory closure via submittal of a Permanent Solution (formerly Response Action Outcome) during construction of the new school. Ensured that soil disposal packages and facility profiles were completed to manage surplus soil generated on the project site.

**On-Call LSP Services Contract, Babson College, Wellesley, Massachusetts.** Managed emergency response activities, including an IRA site assessment and remediation related to a large electrical transformer release, as well as geophysical and magnetometer surveys for historical USTs. Also evaluated the potential for lead impacts beneath artificial turf fields and assessed disposal options/requirements for this material.

**University of Massachusetts, Lowell West Campus, Chelmsford, Massachusetts.** Project manager for the demolition of four former teaching and administration buildings at the site. Directed structural assessments of each building, an inventory of salvageable demolition materials, site topographic and utility survey, demolition design, and cost estimating.

**Tewksbury State Hospital, Tewksbury, Massachusetts.** Project manager for the demolition of six former staff residence buildings and a former wastewater treatment facility at the hospital site. Oversaw structural assessment of each building, site topographic and utility survey, demolition design, cost estimating, bid administration and project management during construction, completed the demolition contract within budget and on schedule.

**Building Demolition, Westborough State Hospital, Massachusetts Division of Capital Asset Management and Maintenance.** Project manager for the engineering design/project management of the demolition of 23 buildings (totaling approximately 300,000 square feet) for DCAMM. Directed structural assessments of each building, site topographic and utility survey, demolition design, utility relocation design, and cost estimating.



# JOSEPH BOCCHIARO III Ph.D., CTS-D, CTS-I, ISF-C

THE SEXTANT GROUP :: Principal Consultant / Principal-in-Charge



Dr. Joe Bocchiaro came to The Sextant Group from InfoComm International, the leading audiovisual trade association, where he was the Director and Vice President of Standards and Industry Innovations Development and taught AV / IT, design and installation certification courses. Joe spent ten years with InfoComm, preceded by more than twenty years of audiovisual consultant and integrator experience in markets of higher education, corporate, judicial, financial and house-of-worship. An accomplished writer and presenter, Joe has published over 100 technical articles in professional journals and has given presentations across 16 countries at more than 50 audiovisual and information technology conferences. Joe is among an elite group of professionals holding both the CTS-D and CTS-I designation, a distinction held by fewer than 200 nationwide.

## PROJECT RESPONSIBILITIES

Determines strategic direction of technology solutions in support of client's business and technology objectives; leads technology team; acts as executive level contact for client.

## CREDENTIALS & ASSOCIATIONS

Certified Technology Specialist - Design (CTS-D) by InfoComm International, the highest level of certification in the audiovisual industry

Certified Technology Specialist - Installation (CTS-I) by InfoComm International

Imaging Science Foundation - Commercial (ISF-C)

SES: The Society for Standards Professionals, Board of Directors

## EDUCATION

Doctor of Philosophy / Education and Educational Technology / Kennedy-Western University / 2004

Master of Arts / Media Studies / New School for Social Research / 1986

Bachelor of Science / Optics and Electro-Optical Engineering / University of Rochester / 1981

Bachelor of Arts / Film Studies and Cinematography / University of Rochester / 1981

## PROJECTS

### County of Henrico, Henrico VA

*Fairfield Area Library*

### New Castle County, New Castle DE

*Route 9 Library*

### Phillips Academy Oliver, Andover MA

*Wendell Holmes Library*

### Rutgers University Newark Campus, Newark NJ \*

*Music Library*

### Cornell University, Ithaca NY

*Learning Space Enhancements Benchmarking and Peer Review*

*\* Projects completed prior to joining The Sextant Group*

# J.P. BONIN

THE SEXTANT GROUP ::



DISCOVERY

INNOVATION

IMPACT

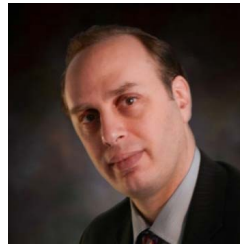


DISCOVERY



# DAVID A. BARNETT CTS-D

THE SEXTANT GROUP :: Senior Consultant / Audiovisual Technologies



Senior Consultant / Project Consultant

JP's twenty years of leadership in the information technology and systems integration industry offers deep insight into rapidly evolving technologies, especially intelligent buildings and healthcare. As original founder of a medical simulation systems integration firm, his experience spans corporate development, strategic planning, and new business identification for commercial, federal, state and local government clients. Credentials include the Center for Medical Simulation (an affiliate of Harvard University), Mayo Clinic Rochester, Stanford University Hospital, and the National Institute of Building Sciences (NIBS). JP leads The Sextant Group's Boston office.

J.P. is based in Boston MA.

## PROJECT RESPONSIBILITIES

Guides planning, programming, and budgeting efforts; coordinates requirements, drawings, and specifications with balance of design team; performs site reviews; facilitates project coordination; acts as operational level contact for client.

## CREDENTIALS & ASSOCIATIONS

InfoComm International, member

Society of Simulation in Healthcare (SSH), member

Northeastern University - Annual Judge at RISE (Research, Innovation and Scholarship Expo)

## EDUCATION

Bachelor of Science / Political Science and Business Administration / Northeastern University / 1994

## PUBLICATIONS & PRESENTATIONS

Northeastern University - Guest Lecturer at the D'Amore-McKim School of Entrepreneurship

## PROJECTS

**Smith College, Northampton MA**  
*Neilson Library*

**Phillips Academy Oliver, Andover MA**  
*Wendell Holmes Library*

**Wellesley College, Wellesley MA**  
*New Science Center*

**University of Vermont, Burlington VT**  
*Multipurpose Center*

**Arlington Public Schools, Arlington VA**  
*Wilson Blvd Middle School*

**Albany Medical Center, Albany NY \***  
*16 Clinical skills rooms, and 5 simulation areas*

**University of New Hampshire, Durham NH \***  
*Medical Simulation Space*

*\* Projects completed prior to joining The Sextant Group*

With over 15 years of experience in systems engineering, design and project management, David has a successful track record of working closely with clients and design teams to deliver innovative technology solutions that meet current and future needs. Experienced in corporate, higher education, performing and cultural arts, and healthcare markets, he has worked with clients on numerous projects throughout the project timeline to integrate custom AV systems into finished spaces.

## PROJECT RESPONSIBILITIES

Leads discussions of audiovisual strategies in support of client's business and technology objectives; designs and specifies audiovisual systems; creates infrastructure and systems drawings; performs site reviews.

## CREDENTIALS & ASSOCIATIONS

Certified Technology Specialist - Design (CTS-D) by InfoComm International, the highest level of certification in the audiovisual industry

Institute of Electrical and Electronics Engineers (IEEE), member

Association for Computing Machinery (ACM), member

## EDUCATION

Master of Science / Electrical Engineering / Technion - Israel Institute of Technology / 1998

Bachelor of Science / Electrical Engineering / Columbia University / 1994

## PROJECTS

**Brooklyn Public Library, Brooklyn NY**  
*BPL Central Library*

**Brooklyn Public Library, Brooklyn NY**  
*Central Library Youth Services Renovation*

**Brooklyn Public Library, Brooklyn NY**  
*Learning Commons*

**Harvard University, Cambridge MA**  
*Cabot Science Library*

**Smith College, Northampton MA**  
*Neilson Library*

**State University of New York at New Paltz NY**  
*Sojourner Truth Library Renovation*

**Cornell University, Ithaca NY**  
*Upson Hall Renovation*

**New Jersey Institute of Technology, Newark NJ**  
*Classroom Renovations*

**Montclair State University, Montclair NJ**  
*School of Communications and Media Studies*



INNOVATION

IMPACT

DISCOVERY

INNOVATION

IMPACT



# DAVID GLENN RCDD, CTS-D, LEED AP BD+C

THE SEXTANT GROUP :: Systems Designer / Lead IT/Telecom and Security



David is an experienced information technology, telecom and building security systems designer, coming to The Sextant Group from a Maryland consulting firm. He was previously employed as the Lead Level 3 Technician for Virginia Tech's University Computing Support, a department of Network Infrastructure & Services and later promoted to Software Assistance & Education Center Manager. David's formal construction management education of the methods, processes and coordination of construction help him to assess, design, specify and support cutting-edge technology systems across markets of higher education and healthcare.

## PROJECT RESPONSIBILITIES

Leads discussions of IT/telecom and Security strategies in support of client's business and technology objectives; designs and specifies IT/telecom and Security systems; applies principles of CP-TED (Crime Prevention Through Environmental Design); creates infrastructure and systems drawings; performs site reviews.

## CREDENTIALS & ASSOCIATIONS

Registered Communications Distribution Designer (RCDD) – highest level of certification in Telecommunications industry – by BISC

Certified Technology Specialist - Design (CTS-D) by InfoComm International, the highest level of certification in the audiovisual industry

LEED Accredited Professional, Building Design & Construction (LEED AP BD+C)

## EDUCATION

Bachelor of Science / Building Construction / Virginia Polytechnic Institute and State University / 2011

## PROJECTS

**Free Library of Philadelphia, Philadelphia PA**  
*21st Century Library Project*

**University of Maryland, College Park MD**  
*Brendan Iribe Center for Computer Science and Innovation*

**Seton Hall University/Hackensack University Medical Center, Nutley NJ**  
*Joint Medical Center*

**University of Maryland Baltimore, Baltimore MD**  
*Health, Sciences & Research Facility III Building*

**Pennsylvania College of Health Sciences, Lancaster PA**  
*Academic Buildings*

**John Hopkins University, Baltimore MD**  
*Technology Ventures and Fast Forward*

**Virginia Polytechnic Institute and State University, Blacksburg VA**  
*Undergraduate Science Laboratory Renovation;  
Holden Hall Mining and Minerals Engineering and Materials Science and  
Engineering Renovation and Expansion*

**Lord Fairfax Community College at Fauquier Campus, Warrenton VA**  
*Hazel STEM Building*



DISCOVERY

INNOVATION

IMPACT







# ALEXIS D. KURTZ INCE, LEED AP

THE SEXTANT GROUP :: Senior Consultant / Lead Acoustics



Alexis is recognized as an architectural acoustics, vibration control, and sustainable design expert who also leads multi-disciplinary design teams in technology-integrated projects. A trailblazer promoting the interdependence of acoustics and sustainability, she serves on expert panels and presents at conferences around the world. Honored as a National Peer, Alexis provides a critical voice in the formal review of all Federal government projects in GSA's Design Excellence and the Arts Program. Over her 20-year consulting career, she has led and been a part of design teams for educational, cultural, and healthcare projects ranging from vibration-sensitive multi-disciplinary science labs to world-renowned concert halls and museums, sprawling international airports, and intimate but acoustically-challenging radio studios.

## PROJECT RESPONSIBILITIES

Leads discussions of Acoustical strategies in support of client's business and technology objectives; acoustical analysis and recommendations, including architectural acoustics, sound isolation design, speech privacy issues, noise & vibration control.

## CREDENTIALS & ASSOCIATIONS

LEED Accredited Professional (LEED AP)

Acoustical Society of America (ASA), member

ASA Technical Committee on Architectural Acoustics, member

Institute of Noise Control Engineering (INCE)

LEED Core Member: Acoustics Working Group (2007-2013)

LEED Core Member: Indoor Environmental Quality Technical Advisory Group (2007-2013)

Past Chairman, Audio Engineering Society, Miami Chapter

## EDUCATION

Bachelor of Music / Music Engineering / University of Miami / 1997

## PROJECTS

**New Castle County, New Castle DE**  
*Route 9 Library*

**Brooklyn Public Library, Brooklyn NY**  
*Learning Commons,  
Central Library Youth Services Renovation*

**University of Virginia, Charlottesville VA**  
*Education Resource Center  
Gilmer Hall and Chemistry Building*

**University of Iowa, Iowa City IA**  
*Main Library Renovation*

**State University of New York at New Paltz, New Paltz NY**  
*Sojourner Truth Library Renovation*

**Messiah College, Grantham PA**  
*Murray Library Learning Commons Renovation*



DISCOVERY

INNOVATION

IMPACT



7. Brief Resume of ONLY those Prime Applicant and Sub-Consultant personnel requested in the Advertisement. <u>Include Resumes of Project Managers.</u> Resumes should be consistent with the persons listed on the Organizational Chart in Question # 6. Additional sheets should be provided only as required for the number of Key Personnel requested in the Advertisement and they must be in the format provided. By including a Firm as a Sub-Consultant, the Prime Applicant certifies that the listed Firm has agreed to work on this Project, should the team be selected.	
a. Name and Title Within Firm: <b>Mark Kalin FAIA FCSI LEED, President</b>	a. Name and Title Within Firm:
b. Project Assignment: <b>Specifications Consultant</b>	b. Project Assignment:
c. Name and Address Of Office In Which Individual Identified In 7a Resides:  <b>Kalin Associates Inc., 1121 Washington Street, Newton, MA 02465</b>  MBE <input type="checkbox"/> WBE <input type="checkbox"/> SDOVBE <input type="checkbox"/> VBE <input type="checkbox"/>	c. Name and Address Of Office In Which Individual Identified In 7a Resides:    MBE <input type="checkbox"/> WBE <input type="checkbox"/> SDOVBE <input type="checkbox"/> VBE <input type="checkbox"/>
d. Years Experience: With This Firm: <u>25</u> With Other Firms: <u>7</u>	d. Years Experience: With This Firm: _____ With Other Firms: _____
e. Education: Degree(s) /Year/Specialization B.A. - English - University of Rochester, 1970 B.S. Arch - Architecture - The Ohio State University, 1975	e. Education: Degree(s) /Year/Specialization
f. Active Registration: Year First Registered/Discipline/Mass Registration Number 1980 - Architecture - Massachusetts 4657 1979 - Certified Construction Specifier, Construction Specifications Institute 2003 - LEED AP Certified, U.S. Green Building Council	f. Active Registration: Year First Registered/Discipline/Mass Registration Number:
g. Current Work Assignments and Availability For This Project:  Fully available for this project; various other projects can be scheduled accordingly	g. Current Work Assignments and Availability For This Project
h. Other Experience and Qualification Relevant To The Proposed Project: (Identify Firm By Which Employed, If Not Current Firm):  Specification writer for over 150 MGL Chapter 149 filed sub-bid projects Specification writer for over 30 MGL Chapter 30 public-bid projects Consultant, DCAMM Standard Specifications 2005, 2013, MGL Chapter 149A, LEED silver Specification writer for over 100 USGBC LEED Registered Projects Author, Architect's Guide to Massachusetts Energy Code, 2001 Author, GreenSpec for Environmentally Responsible Materials, 1995 Past-President, CSI/Boston, 2002 Head of Specifications, Jung/Brannen Associates, Boston, MA 1981-1984 Head of Specifications, Brown Daltas Associates, Cambridge, 1977-1981	h. Other Experience and Qualification Relevant To The Proposed Project: (Identify Firm By Which Employed , If Not Current Firm):



8b. List Current and Relevant Work By Sub-Consultants Which Best Illustrates Current Qualifications In The Areas Listed In The Advertisement (Up To But Not More Than 5 Projects For Each Sub-Consultant). Use Additional Sheets Only As Required For The Number Of Sub-Consultants Requested In The Advertisement and They Must Be In The Format Provided.					
Sub-Consultant Name: <b>Kalin Associates Inc.</b>					
a. Project Name and Location Principal-In-Charge	b. Brief Description Of Project and Services (Include Reference To Areas Of Experience Listed In DSB Advertisement)	c. Client's Name, Address and Phone Number (Include Name Of Contact Person)	d. Completion Date (Actual Or Estimated)	e. Project Cost (In Thousands)	
				Construction Costs (Actual, Or Estimated If Not Completed)	Fee for Work for Which Firm Was Responsible
(1) <b>Kilton Public Library</b> Lebanon, NH Principal-In-Charge: Mark Kalin, Specification Writer Kalin Associates Inc.	Architectural specification writing, coordination of team specifications. Assistance with product selection.	<b>Town of Kilton</b> Lebanon, NH Client: <b>Tappe Architects</b> 6 Edgerly Place, Boston, MA 02116 Contact: Charles Hay, 617-451-0200	2011 Complete	9,000	8
(2) <b>Kipp Academy Lynn Charter School</b> Lynn, MA Principal-In-Charge: Mark Kalin, Specification Writer Kalin Associates Inc.	MGL Chapter 149 Filed Sub-Bids, Architectural specification writing, coordination of team specifications. Assistance with product selection.	<b>Kipp Academy</b> Lynn, MA Client: Arrowstreet, 10 Post Office Square Boston, MA 02109 Contact: Stefan Chaires, 617-623-5555	2012 Actual	17,000	16
(3) <b>Scituate Town Library</b> Scituate, MA Principal-In-Charge: Mark Kalin, Specification Writer Kalin Associates Inc.	MGL Chapter 149 Filed Sub-Bids Architectural specification writing, coordination of team specifications. Assistance with product selection.	<b>Town of Scituate</b> Scituate, MA Client: Oudens Ello Architecture 46 Waltham St, Boston, MA 02118 Contact: Conrad Ello, 617-422-0980	2016 Estimated	4,000	9
(4) <b>Jamaica Plain Branch Library</b> Boston, MA Principal-In-Charge: Mark Kalin, Specification Writer Kalin Associates Inc.	MGL Chapter 149 Filed Sub-Bids Architectural specification writing, coordination of team specifications. Assistance with product selection. Under construction.	<b>City of Boston PFD</b> Boston, MA Client: Utile 115 Kingston St, Boston, MA 02111 Contact: Michael LeBlanc, 617-423-7200	2016	8,000	9
(5) <b>Harvard Public Library</b> Harvard, MA Principal-In-Charge: Mark Kalin, Specification Writer Kalin Associates Inc.	MGL Chapter 149 Filed Sub-Bids Architectural specification writing, coordination of team specifications. Assistance with product selection.	<b>Town of Harvard</b> Harvard, MA Client: CBT 110 Canal St, Boston, MA 02114 Contact: Eileen Cascieri 617-262-4354	2007 Complete	5,000	9



<p>7. Brief Resume of ONLY those Key Staff of Firm and Sub-Consultant Personnel requested in the Advertisement. Confine responses to the space provided on the form and limit resumes to ONE person per discipline requested in the Advertisement. Additional sheets should be provided only as required for the number of key personnel requested in the Advertisement and they must be in the format provided. By including a Sub-Consultant, the firm certifies that the listed Sub-Consultant has agreed to work on this project, should the team be selected.</p>	
<p>a. Name &amp; Title within Firm: <b>David J. Warner, ASLA, Principal</b></p>	<p>a. Name &amp; Title within Firm: <b>Ti Johnson, LEED AP, Senior Associate</b></p>
<p>b. Project Assignment: <b>Principal in Charge</b></p>	<p>b. Project Assignment: <b>Project Manager</b></p>
<p>c. Name and address of Office in which individual identified in 7a resides: <b>Warner Larson Inc.</b> 130 West Broadway Boston, MA 02127</p> <p>MBE <input type="checkbox"/> WBE <input type="checkbox"/></p>	<p>c. Name and address of Office in which individual identified in 7a resides: <b>Warner Larson Inc.</b> 130 West Broadway Boston, MA 02127</p> <p>MBE <input type="checkbox"/> WBE <input type="checkbox"/></p>
<p>d. Years experience: With This Firm: <u>21</u> With Other Firms: <u>6</u></p>	<p>d. Years experience: With This Firm: <u>13</u> With Other Firms: <u>5</u></p>
<p>e. Education: Degree(s) /Year/Specialization <b>Bachelor / 1991 / Landscape Architecture</b></p>	<p>e. Education: Degree(s) /Year/Specialization <b>Bachelor/1998/Landscape Architecture</b></p>
<p>f. Active Registration: Year First Registered/Discipline/Mass Registration Number <b>1999 / Landscape Architect / 1209</b></p>	<p>f. Active Registration: Year First Registered/Discipline/Mass Registration Number <b>2003 / Landscape Architect / 1375</b></p>
<p>g. Current work assignments and availability for this project: <b>David is currently working on several projects at various phases, and is available to meet the site services needs of this project as principal-in-charge.</b></p>	<p>g. Current work assignments and availability for this project: <b>Ti is the project manager for three current projects and is available to serve as project manager for this project.</b></p>
<p>h. Other experience and qualifications relevant to the proposed project: (Identify firm by which employed, if not current firm):</p> <p><b>Southbridge MS/HS</b> Southbridge, MA</p> <p><b>Goodyear Elementary School</b> Woburn, MA</p> <p><b>Galvin Middle School</b> Wakefield, MA</p> <p><b>Ambrose Elementary School</b> Winchester, MA</p> <p><b>Maynard High School</b> Maynard, MA</p> <p><b>Rutland Library</b> Rutland, MA</p>	<p>h. Other experience and qualifications relevant to the proposed project: (Identify firm by which employed, if not current firm):</p> <p><b>Southbridge MS/HS</b> Southbridge, MA</p> <p><b>Goodyear Elementary School</b> Woburn, MA</p> <p><b>Galvin Middle School</b> Wakefield, MA</p> <p><b>Ambrose Elementary School</b> Winchester, MA</p> <p><b>Maynard High School</b> Maynard, MA</p>



8b. Current and relevant work by Sub-Consultants that best illustrates current qualifications in the areas listed in the advertisement. (List up to but not more than 5 projects for each Sub-Consultant.) Additional sheets should be provided only as required for the number of Sub-Consultants requested in the advertisement and they must be in the format provided.					
Sub-Consultant Name <b>Warner Larson Landscape Architects</b>					
a. Project name & location Principal-in-Charge	b. Brief description and responsibility (include reference to areas of experience listed in RFS)	c. Project Owner's name & address and owner's reference name & phone number	d. Completion Date (actual or estimated)	e. Project (Construction) Cost (000's)	
				Construction Costs (actual, or estimated if not completed)	Fee for work for which firm was responsible
(1) <b>Seekonk Library</b> Seekonk, MA  David J. Warner, Principal-in-Charge	Feasibility Study & Schematic Design, Site design, based on proposed building configuration. Schematic design included parking, circulation, outdoor reading areas and connection to Seekonk Meadows.	Chris Blessen, AIA Tappé Architects Six Edgerly Place Boston, Massachusetts 02116 617-451-0200	TBD	\$11.7M	\$7
(2) <b>Wayland Library</b> Wayland, MA  David J. Warner, Project Manager	Site design for a new library building. Studies were developed for meeting adjacent use needs such as additional bus parking and a soccer field.	Jeffrey Hoover, AIA Tappé Architects Six Edgerly Place Boston, Massachusetts 02116 617-451-0200	TBD	\$19M	\$9
(3) <b>Fitchburg Library</b> Fitchburg, MA  David J. Warner, Principal-in-Charge	Site design around proposed library building encompassing site circulation, parking and outdoor spaces including: front plaza and courtyard.	Jeffrey Hoover, AIA Tappé Architects Six Edgerly Place Boston, MA 02116 617-451-0200	TBD	\$30M	\$3
(4) <b>Clyde Brown Elementary School</b> Millis, MA  David J. Warner, Principal-in-Charge	Complete site design of new K-4 school on existing school site. Studied multiple locations and adjusted land parcels for Article 97 land swap between park and school jurisdiction.	Jeff D'Amico Compass Project Management, Inc. 266 Main Street, Suite 31A Medfield, MA 02052 508-359-6111	2016	\$3,342	\$265
(5) <b>Stoneham Middle School</b> Stoneham, MA  David J. Warner, Principal-in-Charge	Complete site design for new middle school addition including new driveway layout, parking, vehicular circulation, plazas and outdoor classroom areas. The project included an initial feasibility study that explored multiple sites.	Charles Hay Tappé Architects Six Edgerly Place Boston, MA 02116 617-451-0200	02015	\$1,550	\$108



7. Brief Resume of ONLY those Prime Applicant and Sub-Consultant personnel requested in the Advertisement. <u>Include Resumes of Project Managers.</u> Resumes should be consistent with the persons listed on the Organizational Chart in Question # 6. Additional sheets should be provided only as required for the number of Key Personnel requested in the Advertisement and they must be in the format provided. By including a Firm as a Sub-Consultant, the Prime Applicant certifies that the listed Firm has agreed to work on this Project, should the team be selected.	
a. Name and Title Within Firm: Peter T. Timothy, President – Cost Estimator	a. Name and Title Within Firm:
b. Project Assignment: Cost Estimator	b. Project Assignment:
c. Name and Address Of Office In Which Individual Identified In 7a Resides: A. M. Fogarty & Associates, Inc. MBE <input type="checkbox"/> 175 Derby Street – Suite 5 WBE <input type="checkbox"/> Hingham, MA 02043-4014 (781) 749-7272 SDOVBE <input type="checkbox"/> VBE <input type="checkbox"/>	c. Name and Address Of Office In Which Individual Identified In 7a Resides: MBE <input type="checkbox"/> WBE <input type="checkbox"/> SDOVBE <input type="checkbox"/> VBE <input type="checkbox"/>
d. Years Experience: With This Firm: <u>29</u> With Other Firms: <u>4</u>	d. Years Experience: With This Firm: _____ With Other Firms: _____
e. Education: Degree(s) /Year/Specialization University of Wisconsin-Platteville, 1985, Bachelor of Science Degree in Construction Management	e. Education: Degree(s) /Year/Specialization
f. Active Registration: Year First Registered/Discipline/Mass Registration Number N/A	f. Active Registration: Year First Registered/Discipline/Mass Registration Number:
g. Current Work Assignments and Availability For This Project: <b>We currently are estimating approximately 10 projects per month.</b> <b>We are very flexible increasing our work load due to the nature of our staffing</b>	g. Current Work Assignments and Availability For This Project
h. Other Experience and Qualification Relevant To The Proposed Project: (Identify Firm By Which Employed, If Not Current Firm):  Mr. Timothy has been a professional estimator since earning a BS degree in Building Construction Management in 1985. He was chief estimator for a large interior contractor. Currently, Mr. Timothy is President of A. M. Fogarty and Associates, Inc. and in charge of all construction cost estimates and competitive bidding for the company.	h. Other Experience and Qualification Relevant To The Proposed Project: (Identify Firm By Which Employed , If Not Current Firm):



8b. List Current and Relevant Work By Sub-Consultants Which Best Illustrates Current Qualifications In The Areas Listed In The Advertisement (Up To But Not More Than 5 Projects For Each Sub-Consultant). Use Additional Sheets Only As Required For The Number Of Sub-Consultants Requested In The Advertisement and They Must Be In The Format Provided.					
Sub-Consultant Name: <b>A. M. FOGARTY &amp; ASSOCIATES, INC. – COST ESTIMATOR</b>					
a. Project Name and Location Principal-In-Charge	b. Brief Description Of Project and Services (Include Reference To Areas Of Experience Listed In DSB Advertisement)	c. Client's Name, Address and Phone Number (Include Name Of Contact Person)	d. Completion Date (Actual Or Estimated)	e. Project Cost (In Thousands)	
				Construction Costs (Actual, Or Estimated If Not Completed)	Fee for Work for Which Firm Was Responsible
(1) Woburn Library Woburn, MA  Peter Timothy	Cost Estimating Historic Renovation & Addition	Town of Woburn 10 Common Street Woburn, MA 01801 (781) 987-5850	2017	\$28 mil	\$6
(2) Park Branch Library Hartford, CT  Peter Timothy	Cost Estimating New Addition & Sitework	City of Hartford 550 Main Street Hartford, CT 06103 (860) 757-9311	2017	\$8.5mil	\$12
(3) Sherborn Public Library Sherborn, MA  Peter Timothy	Cost Estimating Renovation & Addition	Town of Sherborn 19 Washington Street Sherborn, MA 01770 (508)651-7853	2016	\$6.8 mil	\$3
(4) Reading Public Library Reading, MA  Peter Timothy	Cost Estimating Renovation & Addition	Town of Reading Town Hall 16 Lowell Street Reading, MA 01867 (781) 942-9050	2015	\$13.2 mil	\$7
(5) Shrewsbury Library Shrewsbury, MA  Peter Timothy	Cost Estimating New Construction & Renovation	Town of Shrewsbury Town Hall 100 Maple Avenue Shrewsbury, MA 01545 (508) 841-0587	2014	\$16 mil	\$3

7. Brief Resume of ONLY those Prime Applicant and Sub-Consultant personnel requested in the Advertisement. <u>Include Resumes of Project Managers.</u> Resumes should be consistent with the persons listed on the Organizational Chart in Question # 6. Additional sheets should be provided only as required for the number of Key Personnel requested in the Advertisement and they must be in the format provided. By including a Firm as a Sub-Consultant, the Prime Applicant certifies that the listed Firm has agreed to work on this Project, should the team be selected.	
a. Name and Title Within Firm: <b>Ammar M. Dieb, President</b>	a. Name and Title Within Firm:
b. Project Assignment: <b>Principal in Charge/Project Manager</b>	b. Project Assignment:
c. Name and Address Of Office In Which Individual Identified In 7a Resides: <b>Universal Environmental Consultants</b> 12 Brewster Road, Framingham, MA 01702 MBE <input type="checkbox"/> WBE <input type="checkbox"/> SDVOBE <input type="checkbox"/> VBE <input type="checkbox"/>	c. Name and Address Of Office In Which Individual Identified In 7a Resides:  MBE <input type="checkbox"/> WBE <input type="checkbox"/> SDVOBE <input type="checkbox"/> VBE <input type="checkbox"/>
d. Years Experience: With This Firm: <u>16</u> With Other Firms: <u>13</u>	d. Years Experience: With This Firm: _____ With Other Firms: _____
e. Education: Degree(s) /Year/Specialization B.S./1987/Civil Engineering	e. Education: Degree(s) /Year/Specialization
f. Active Registration: Year First Registered/Discipline/Mass Registration Number 1990/Certified Asbestos Project Designer, AD 900326 1989/Certified Asbestos Project Monitor, AM 050620 Hygeia Inc., Airborne Asbestos Sampling & Evaluation; NIOSH 582 Equivalency	f. Active Registration: Year First Registered/Discipline/Mass Registration Number
g. Current Work Assignments and Availability For This Project:  UEC is available to perform all services required on a short notice.  List of current projects: Arlington High School Attleboro High School Saugus High School Fall River High School Lowell High School	g. Current Work Assignments and Availability For This Project:
h. Other Experience and Qualifications Relevant To The Proposed Project: (Identify Firm By Which Employed, If Not Current Firm):  Mr. Dieb is presently a President of Universal Environmental Consultants. Mr. Dieb has been licensed for Asbestos Consulting Services, including Designing, Construction Project Monitoring and Air Sampling Analysis since 1988. Mr. Dieb has been involved in the inspection, management planning, design for remediation and construction and laboratory services in over 300 school buildings as well as over 200 residential, commercial and industrial buildings in Massachusetts, Rhode Island and New Hampshire.	h. Other Experience and Qualifications Relevant To The Proposed Project: (Identify Firm By Which Employed, If Not Current Firm):



8b. List Current and Relevant Work By Sub-Consultants Which Best Illustrates Current Qualifications In The Areas Listed In The Advertisement (Up To But Not More Than 5 Projects For Each Sub-Consultant). Use Additional Sheets Only As Required For The Number Of Sub-Consultants Requested In The Advertisement.					
Sub-Consultant Name: Universal Environmental					
a. Project Name and Location Principal-In-Charge	b. Brief Description Of Project and Services (Include Reference To Relevant Experience	c. Client's Name, Address And Phone Number. Include Name Of Contact Person	d. Completion Date (Actual Or Estimated)	e. Project Cost (In Thousands)	
				Construction Costs (Actual, Or Estimated If Not Completed)	Fee For Work For Which Firm Was/Is Responsible
(1) <b>East Bridgewater Public Library</b> East Bridgewater, MA Ammar M. Dieb	Hazardous material inspection, design, construction monitoring and air sampling during renovations to the Library.	Town of East Bridgewater C/o Tappe Architects 6 Edgerly Place Boston, MA 02116 Mr. Charlie Hay (617) 451-0200	2015	\$12,800 (Est.)	\$11
(2) <b>Town of Foxborough Public Library</b> Foxborough, MA Ammar M. Dieb	Asbestos inspection, design and construction monitoring and air sampling during renovation of the Boyden Public Library	Town of Foxborough C/o Lerner Ladds+ Bartels Mr. Drayton Fair 161 Exchange Street Pawtucket, RI (401) 421-7715	2012	\$11,500 (Est.)	\$36
(3) <b>Town of Reading Public Library</b> Reading, MA Ammar M. Dieb	Asbestos construction monitoring and air sampling during renovation and demolition to the Reading Public Library	Town of Reading C/O STV, Inc. Mr. Robert Labrecque 300 Washington Street, Suite 951 Newton, MA 02458 (857) 248-3780	2015	\$11,300 (Est.)	\$22
(4) <b>Town of Needham Public Library</b> Needham, MA Ammar M. Dieb	Asbestos inspection, design and Design construction monitoring and air sampling during renovation and demolition to the Needham Free Library	Town of Needham, MA C/o Ann Beha Architects 33 Kingston Street Boston, MA 02111 Mr. Brent Stringfellow (617) 338-3000	2007	\$11,000 (Est.)	\$20
(5) <b>Town of Shrewsbury Public Library</b> Shrewsbury, MA Ammar M. Dieb	Hazardous materials inspection, design, construction monitoring, and air sampling during renovation and demolition of the Shrewsbury Public Library.	Town of Shrewsbury C/o Lamoureux Pagano Associates Mr. Mike Pagano 108 Grove Street Worcester, MA 01605 (508) 752-2831	2015	\$15,000 (Est.)	\$25



# FIRM STABILITY & CAPACITY



## HISTORY AND OWNERSHIP

Tappé Architects, Inc. was founded in 1979 as a continuation of the firm of Huygens and Tappé originally begun in 1962. This ongoing practice is credited with more than 250 institutional and municipal projects as well as numerous private institutional, residential and commercial commissions.

As founding principal, Founding principal Tony Tappé oversaw the firm's work for over three decades prior to the organization transitioning to new ownership and management in 2000. Prior to 1962, Tony worked at Walter Gropius's iconic firm, The Architects Collaborative (TAC), in Cambridge, MA. In 1979, Mr. Tappé was elected to the College of Fellows of the American Institute of Architects (FAIA) and has been past President of the Boston Society of Architects (BSA). He served on the Board of Directors for the Boston Architectural College (BAC).

In 2015, we invited part of our future leadership into partnership/ownership by adding Chris Blessen to our principal and board level management.

## FINANCIAL STABILITY

Tappé continues to have a steady and strong balance sheet and does not have any financial issues in our history that were made public or otherwise. We use generally accepted accounting methods and sound bookkeeping practices. Our independent accountant's annual review can be provided upon request.

## FIRM CAPACITY

Our firm is not at full capacity. Please see the aside chart for our current workload:

## INSURANCE CERTIFICATE

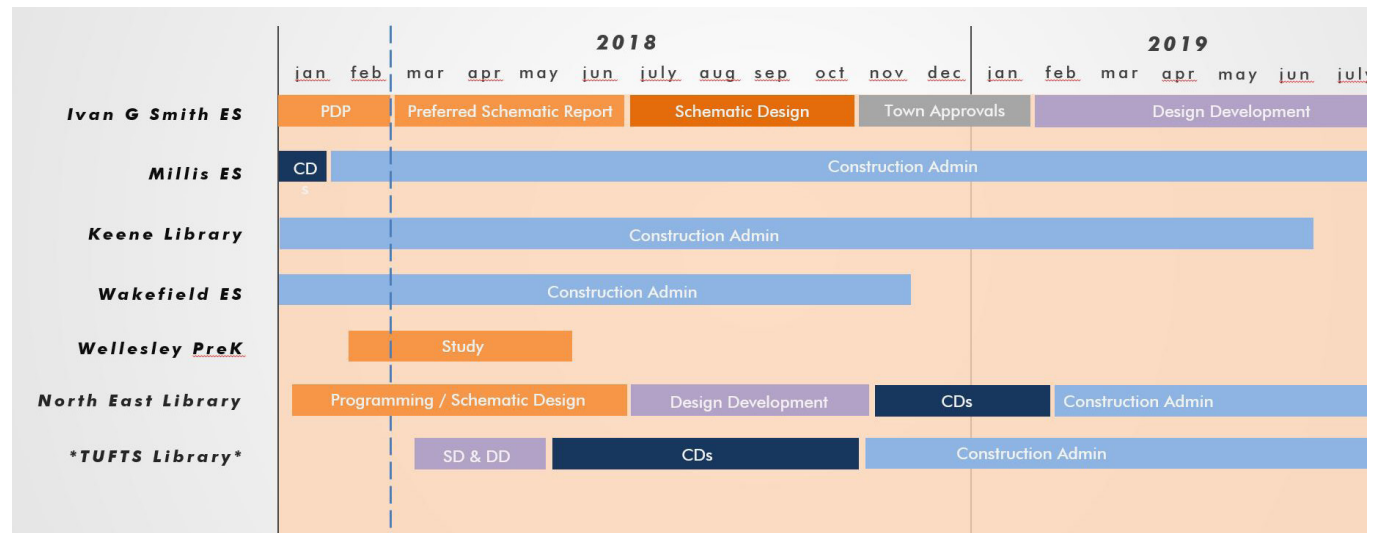
See next page.

## PRICE PROPOSAL

In separate envelope.

## ACKNOWLEDGMENT OF ADDENDA

Tappé Architects hereby acknowledges all addenda to the Weymouth Public Libraries' RFQ, as of the response due date of 02/20/2018.





TAPPASS-01

## CERTIFICATE OF LIABILITY INSURANCE

CMURPHY

DATE (MM/DD/YYYY)  
09/06/2017

THIS CERTIFICATE IS ISSUED AS A MATTER OF INFORMATION ONLY AND CONFERS NO RIGHTS UPON THE CERTIFICATE HOLDER. THIS CERTIFICATE DOES NOT AFFIRMATIVELY OR NEGATIVELY AMEND, EXTEND OR ALTER THE COVERAGE AFFORDED BY THE POLICIES BELOW. THIS CERTIFICATE OF INSURANCE DOES NOT CONSTITUTE A CONTRACT BETWEEN THE ISSUING INSURER(S), AUTHORIZED REPRESENTATIVE OR PRODUCER, AND THE CERTIFICATE HOLDER.

**IMPORTANT:** If the certificate holder is an **ADDITIONAL INSURED**, the policy(ies) must have **ADDITIONAL INSURED** provisions or be endorsed. If **SUBROGATION IS WAIVED**, subject to the terms and conditions of the policy, certain policies may require an endorsement. A statement on this certificate does not confer rights to the certificate holder in lieu of such endorsement(s).

PRODUCER Ames & Gough 859 Willard Street Suite 320 Quincy, MA 02169	CONTACT NAME:	
	PHONE (A/C, No, Ext): (617) 328-6555	FAX (A/C, No): (617) 328-6888
INSURED  Tappe Architects, Inc Six Edgerly Place Boston, MA 02116	E-MAIL ADDRESS: boston@amesgough.com	
	INSURER(S) AFFORDING COVERAGE	
	INSURER A : Travelers Indemnity Company of Connecticut	25682
	INSURER B : Travelers Indemnity Co. of America A++, XV	25666
	INSURER C : Travelers Indemnity Company, A++, XV	25658
	INSURER D : Travelers Casualty & Surety Co. of America A++, XV	31194
INSURER E :		
INSURER F :		

COVERAGES	CERTIFICATE NUMBER:	REVISION NUMBER:
THIS IS TO CERTIFY THAT THE POLICIES OF INSURANCE LISTED BELOW HAVE BEEN ISSUED TO THE INSURED NAMED ABOVE FOR THE POLICY PERIOD INDICATED. NOTWITHSTANDING ANY REQUIREMENT, TERM OR CONDITION OF ANY CONTRACT OR OTHER DOCUMENT WITH RESPECT TO WHICH THIS CERTIFICATE MAY BE ISSUED OR MAY PERTAIN, THE INSURANCE AFFORDED BY THE POLICIES DESCRIBED HEREIN IS SUBJECT TO ALL THE TERMS, EXCLUSIONS AND CONDITIONS OF SUCH POLICIES. LIMITS SHOWN MAY HAVE BEEN REDUCED BY PAID CLAIMS.		

INSR LTR	TYPE OF INSURANCE	ADDL INSD	SUBR WVD	POLICY NUMBER	POLICY EFF (MM/DD/YYYY)	POLICY EXP (MM/DD/YYYY)	LIMITS
A	<input checked="" type="checkbox"/> COMMERCIAL GENERAL LIABILITY			680-2H013772	09/01/2017	09/01/2018	EACH OCCURRENCE \$ 1,000,000
	<input type="checkbox"/> CLAIMS-MADE <input checked="" type="checkbox"/> OCCUR						DAMAGE TO RENTED PREMISES (Ea occurrence) \$ 1,000,000
							MED EXP (Any one person) \$ 10,000
							PERSONAL & ADV INJURY \$ 1,000,000
	GEN'L AGGREGATE LIMIT APPLIES PER:						GENERAL AGGREGATE \$ 2,000,000
	<input type="checkbox"/> POLICY <input checked="" type="checkbox"/> PROJECT <input type="checkbox"/> LOC						PRODUCTS - COMP/OP AGG \$ 2,000,000
	OTHER:						\$
B	AUTOMOBILE LIABILITY			BA-5425M685	09/01/2017	09/01/2018	COMBINED SINGLE LIMIT (Ea accident) \$ 1,000,000
	<input type="checkbox"/> ANY AUTO OWNED AUTOS ONLY	<input type="checkbox"/> SCHEDULED AUTOS					BODILY INJURY (Per person) \$
	<input checked="" type="checkbox"/> HIRED AUTOS ONLY	<input checked="" type="checkbox"/> NON-OWNED AUTOS ONLY					BODILY INJURY (Per accident) \$
							PROPERTY DAMAGE (Per accident) \$
C	<input checked="" type="checkbox"/> UMBRELLA LIAB	<input checked="" type="checkbox"/> OCCUR		CUP-0931T784	09/01/2017	09/01/2018	EACH OCCURRENCE \$ 2,000,000
	<input type="checkbox"/> EXCESS LIAB	<input type="checkbox"/> CLAIMS-MADE					AGGREGATE \$ 2,000,000
	DED <input checked="" type="checkbox"/> RETENTION \$ 10,000						\$
A	WORKERS COMPENSATION AND EMPLOYERS' LIABILITY			UB-4J038247	09/01/2017	09/01/2018	<input checked="" type="checkbox"/> PER STATUTE <input type="checkbox"/> OTHER
	ANY PROPRIETOR/PARTNER/EXECUTIVE OFFICER/MEMBER EXCLUDED? (Mandatory in NH)	Y / N <input checked="" type="checkbox"/> N	N / A				E.L. EACH ACCIDENT \$ 1,000,000
	If yes, describe under DESCRIPTION OF OPERATIONS below						E.L. DISEASE - EA EMPLOYEE \$ 1,000,000
							E.L. DISEASE - POLICY LIMIT \$ 1,000,000
D	Professional Liab			105633082	09/01/2017	09/01/2018	Per Claim 2,000,000
D				105633082	09/01/2017	09/01/2018	Aggregate 2,000,000

DESCRIPTION OF OPERATIONS / LOCATIONS / VEHICLES (ACORD 101, Additional Remarks Schedule, may be attached if more space is required)  
All Coverages are in accordance with the policy terms and conditions.

evidence of insurance

CERTIFICATE HOLDER	CANCELLATION
For Marketing Purposes Only	SHOULD ANY OF THE ABOVE DESCRIBED POLICIES BE CANCELLED BEFORE THE EXPIRATION DATE THEREOF, NOTICE WILL BE DELIVERED IN ACCORDANCE WITH THE POLICY PROVISIONS.
	AUTHORIZED REPRESENTATIVE 

ACORD 25 (2016/03)

© 1988-2015 ACORD CORPORATION. All rights reserved.

The ACORD name and logo are registered marks of ACORD





The Commonwealth of Massachusetts  
Office of the Inspector General  
One Ashburton Place, Boston, MA 02108



### Massachusetts Certified Public Purchasing Official Program

Hereby presents this Certificate of Completion to

**Chris Blessen**

for attendance in the seminar entitled

### Recertification for School Project Designers & Owner's Project Managers

Boston, Massachusetts  
October 4, 2016

Inspector General



7 CPE Credits – "In accordance with the standards of the National Registry of CPE Sponsors, CPE credit has been granted based upon a 50 minute hour."  
The Commonwealth of Massachusetts Office of the Inspector General is registered with the National Association of State Boards of Accountancy (NASBA) as a sponsor of continuing professional education on the National Registry of CPE Sponsors. State Boards of Accountancy have final authority on the acceptance of individual courses for CPE credit. Complaints regarding registered sponsors may be submitted to the National Registry of CPE Sponsors through its website: [www.learningmarket.org](http://www.learningmarket.org)  
Sponsor ID#103866  
Field of Study: Specialized Knowledge and Applications  
Instructional / Delivery Method: Group-Live



Qualifies for 7 Professional Development Points based on the State Plan for Professional Development.



Qualifies for 7 MCPPPO points toward recertification.



The Commonwealth of Massachusetts  
Office of the Inspector General  
One Ashburton Place, Boston, MA 02108



### Massachusetts Certified Public Purchasing Official Program

Hereby presents this certificate to

**Charlie Hay**

for successful completion of

### Recertification for School Project Designers and Owner's Project Managers

Boston, Massachusetts  
June 2, 2017

Glenn A. Cunha  
Inspector General



7 CPE Credits – "In accordance with the standards of the National Registry of CPE Sponsors, CPE credit has been granted based upon a 50-minute hour."

The Massachusetts Office of the Inspector General is registered with the National Association of State Boards of Accountancy (NASBA) as a sponsor of continuing professional education on the National Registry of CPE Sponsors. State boards of accountancy have final authority on the acceptance of individual courses for CPE credit. Complaints regarding registered sponsors may be submitted to the National Registry of CPE Sponsors through its website: [www.NASBAregistry.org](http://www.NASBAregistry.org)

Sponsor ID#103866  
Field of Study: Specialized Knowledge and Applications  
Instructional/Delivery Method: Group-Live



Qualifies for 7 Professional Development Points based on the State Plan for Professional Development.

The Massachusetts Office of the Inspector General is registered with the Department of Elementary & Secondary Education to award professional development points (PDP).



Qualifies for 7 MCPPPO points toward recertification



The Commonwealth of Massachusetts  
Office of the Inspector General  
One Ashburton Place, Boston, MA 02108



### Massachusetts Certified Public Purchasing Official Program

Hereby presents this Certificate of Completion to

**Jeffrey Hoover**

for attendance in the seminar entitled

### Recertification for School Project Designers & Owner's Project Managers

Boston, Massachusetts  
June 2, 2015

Inspector General



7 CPE Credits – "In accordance with the standards of the National Registry of CPE Sponsors, CPE credit has been granted based upon a 50 minute hour."  
The Commonwealth of Massachusetts Office of the Inspector General is registered with the National Association of State Boards of Accountancy (NASBA) as a sponsor of continuing professional education on the National Registry of CPE Sponsors. State Boards of Accountancy have final authority on the acceptance of individual courses for CPE credit. Complaints regarding registered sponsors may be submitted to the National Registry of CPE Sponsors through its website: [www.learningmarket.org](http://www.learningmarket.org)  
Sponsor ID#103866  
Field of Study: Specialized Knowledge and Applications  
Instructional / Delivery Method: Group-Live



Qualifies for 7 Professional Development Points based on the State Plan for Professional Development.



Qualifies for 0 MCPPPO points toward recertification.



The Commonwealth of Massachusetts  
Office of the Inspector General  
One Ashburton Place, Boston, MA 02108



### Massachusetts Certified Public Purchasing Official Program

Hereby presents this certificate to

**Jennifer Littlefield**

for successful completion of

### Recertification for School Project Designers and Owner's Project Managers

Boston, Massachusetts  
December 6, 2016

Glenn A. Cunha  
Inspector General



7 CPE Credits – "In accordance with the standards of the National Registry of CPE Sponsors, CPE credit has been granted based upon a 50-minute hour."

The Massachusetts Office of the Inspector General is registered with the National Association of State Boards of Accountancy (NASBA) as a sponsor of continuing professional education on the National Registry of CPE Sponsors. State boards of accountancy have final authority on the acceptance of individual courses for CPE credit. Complaints regarding registered sponsors may be submitted to the National Registry of CPE Sponsors through its website: [www.NASBAregistry.org](http://www.NASBAregistry.org)

Sponsor ID#103866  
Field of Study: Specialized Knowledge and Applications  
Instructional/Delivery Method: Group-Live



Qualifies for 7 Professional Development Points based on the State Plan for Professional Development.

The Massachusetts Office of the Inspector General is registered with the Department of Elementary & Secondary Education to award professional development points (PDP).



Qualifies for 7 MCPPPO points toward recertification







# Tappé has designed, planned and facilitated over *90 public, private and academic libraries* over the last 35 years:

---

## 2018

---

Alexander Mack Library, Bridgewater College, VA  
Fairfield Public Library, Henrico, VA  
Fitchburg Public Library, Fitchburg, MA  
Wayland Library, Wayland, MA  
Edgartown Public Library, MA  
Melrose Academic Learning Commons, MA  
Keene Public Library Addition/Renovation, NH  
Barrington Public Library Children's Library, RI  
Faneuil Branch Boston Public Library Branch, MA  
Varina Area Library, VA  
Libbie Mill Library, VA  
Gayton Public Library, VA  
Waynesboro Public Library, VA  
Athol Public Library, MA  
Westhampton Memorial Library, MA  
Wilbraham Public Library, MA  
Westerly Public Library, RI  
Kilton Public Library, NH  
Fessenden School Academic Library, MA  
Manchester Branch Library, NH  
Mendon/Upton joint public Library, MA  
Belmont Memorial Library, MA  
Amesbury Public Library Study, MA  
Portland ME Public Library Consult, ME  
Brooklyn Public Library Consult, NY  
Holyoke Public Library Consult, MA  
Warren Freedenfeld Consult, MA  
Chicopee Public Library, MA  
Provincetown Library & Museum Study, MA  
Belmont Library, MA  
Worcester Public Library, MA

York Public Library, ME  
Chelmsford Public Library, MA  
Keene Public Library Renovation, MA  
Beverly Farms Public Library, MA  
Concord Library, NH  
Merrimack Public Library, MA  
Chelmsford Public Library, MA  
Saugus Public Library, MA  
Keene Public Library, MA  
Laconia Public Library, MA  
Acton Memorial Library Expansion, MA  
Laconia Public Library, MA  
Nevins Memorial Library, MA  
Hellenic College Library, MA  
Topsfield Town Library, MA  
Hanover Library, MA  
Billerica Public Library, MA  
Pembroke Library, MA  
Portsmouth Public Library Study, MA  
Abington Library Study, MA  
Goodnow Library, MA  
Concord New Hampshire Library Study, MA  
Revere Public Library (Continued Services), MA  
New Bedford Free Public Library, MA  
Dover Town Library, MA  
Morse Institute Library, MA  
Newburyport Library, MA  
Kennebunk Free Public Library, ME  
Burlington Public Library, MA  
Chelsea Library, MA  
Rockport Library, MA

Eldredge Public Library, MA  
Attleboro Library Repairs, MA  
Winchester Library, MA  
Hanover Library Study, MA  
Revere Library, MA  
Easton Library Study, MA  
Beverly Library, MA  
Attleboro Library, MA  
East Library, MA  
Winchester Library, MA  
Wellfleet Library Study, MA  
Newton Public Library, MA  
Mass College of Art: Library Relocation, MA  
Lowell Court House Library, MA  
Bourne Public Library, MA  
Wayland Free Public Library, MA  
Newton Public Library Study  
Somerville Public Library Study, MA  
Wellfleet Public Library, MA  
West Hartford Public Library, MA  
N.E.J.M. Office Renov. Countway Library, MA  
Lynn Public Library, MA  
Milford Public Library, MA  
Deree Library, Athens , Greece  
St. Vlads College Library, NY  
American College of London Library  
New Milford Library, CT  
West Roxbury Boston Public Library Branch

## 1980

---





TAPPÉ  
ARCHITECTS

