



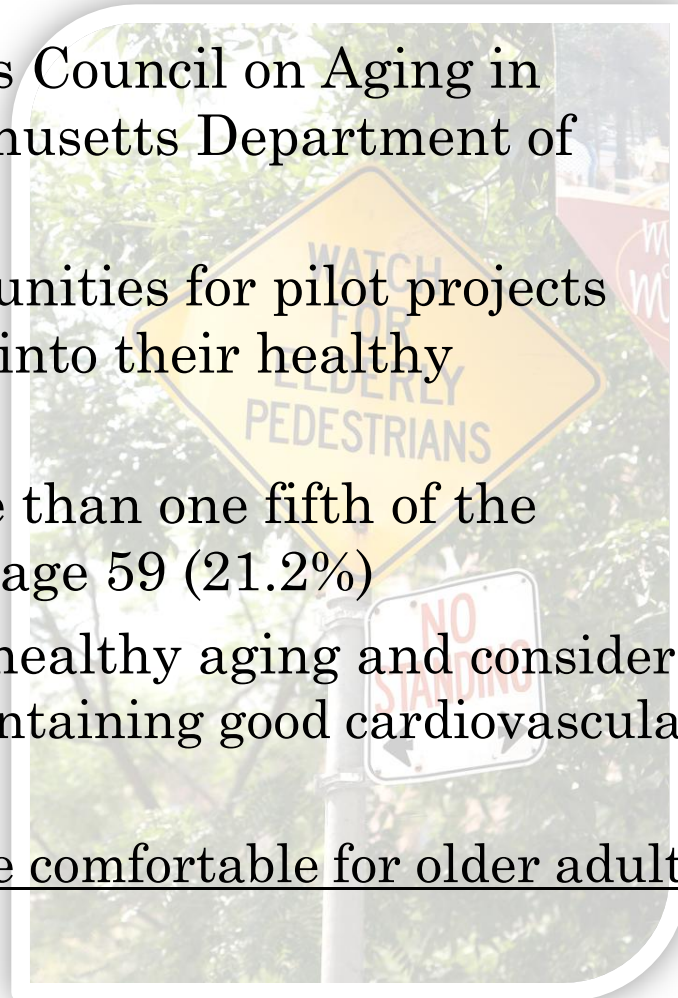
# SAFE ROUTES FOR SENIORS

## *Planning and Design Project*

Presentation prepared by the Weymouth Department of Planning and  
Community Development

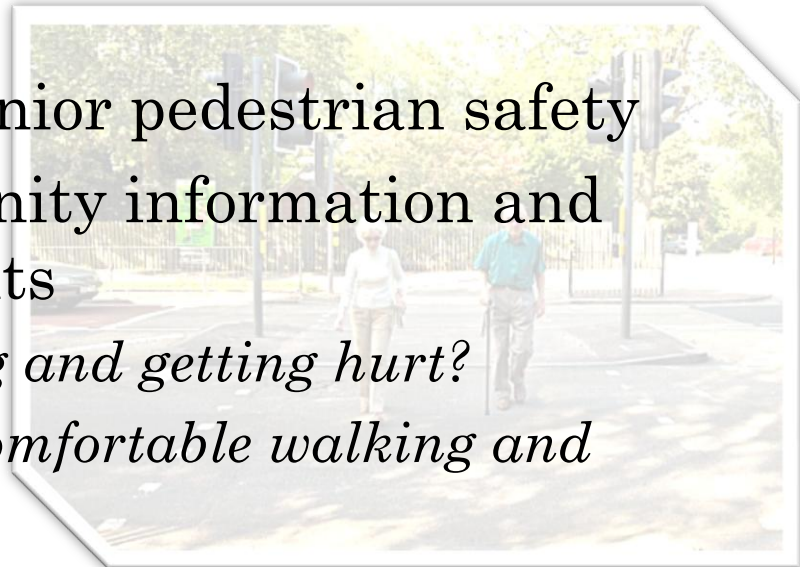
# *HEALTHY AGING THROUGH HEALTHY COMMUNITY DESIGN CHAMPIONS GRANT*

- Funded by the Massachusetts Council on Aging in partnership with the Massachusetts Department of Public Health
- Awards given to seven communities for pilot projects that integrate senior centers into their healthy community designs
- Census data shows that more than one fifth of the town's population is over the age 59 (21.2%)
- Weymouth needs to plan for healthy aging and consider the role of street design in maintaining good cardiovascular health in old age
- Streets that are safer and more comfortable for older adults are better for everyone



# DESIGNING SAFER ROUTES FOR SENIORS

- Partners include Elder Services, Healthy Wey, and WalkBoston
- Conduct a data-driven senior pedestrian safety
- Data means both community information and input from senior residents
  - *Where are seniors walking and getting hurt?*
  - *Where do seniors feel uncomfortable walking and why?*
  - *What changes would seniors like to see?*
- Identity Senior Pedestrian Target Area (SPTAs) and conduct street-level walk audits
- Develop design guidelines to improve streets and walking conditions for older residents



# Pedestrian Safety Study

## Legend

- ☆ Senior Fatal Pedestrian Accidents '09 - '14
- ☆ Senior Pedestrian Accidents '09 - '14
- 🏠 Public Housing 2014
- 🏠 Private Senior Housing 2014
- 🏠 Nursing Facilities 2014
- 🏠 Limited Business District
- 🏠 General Business District
- 🏠 Medical Services District
- 🏠 Neighborhood Center District
- 🏠 Public & Semi-Public Open Space

## 2012 Motor Vehicle

### TOTAL ACCIDENTS

- 1
- 2
- 3 - 5
- 6 - 7
- 8 - 10
- 11+

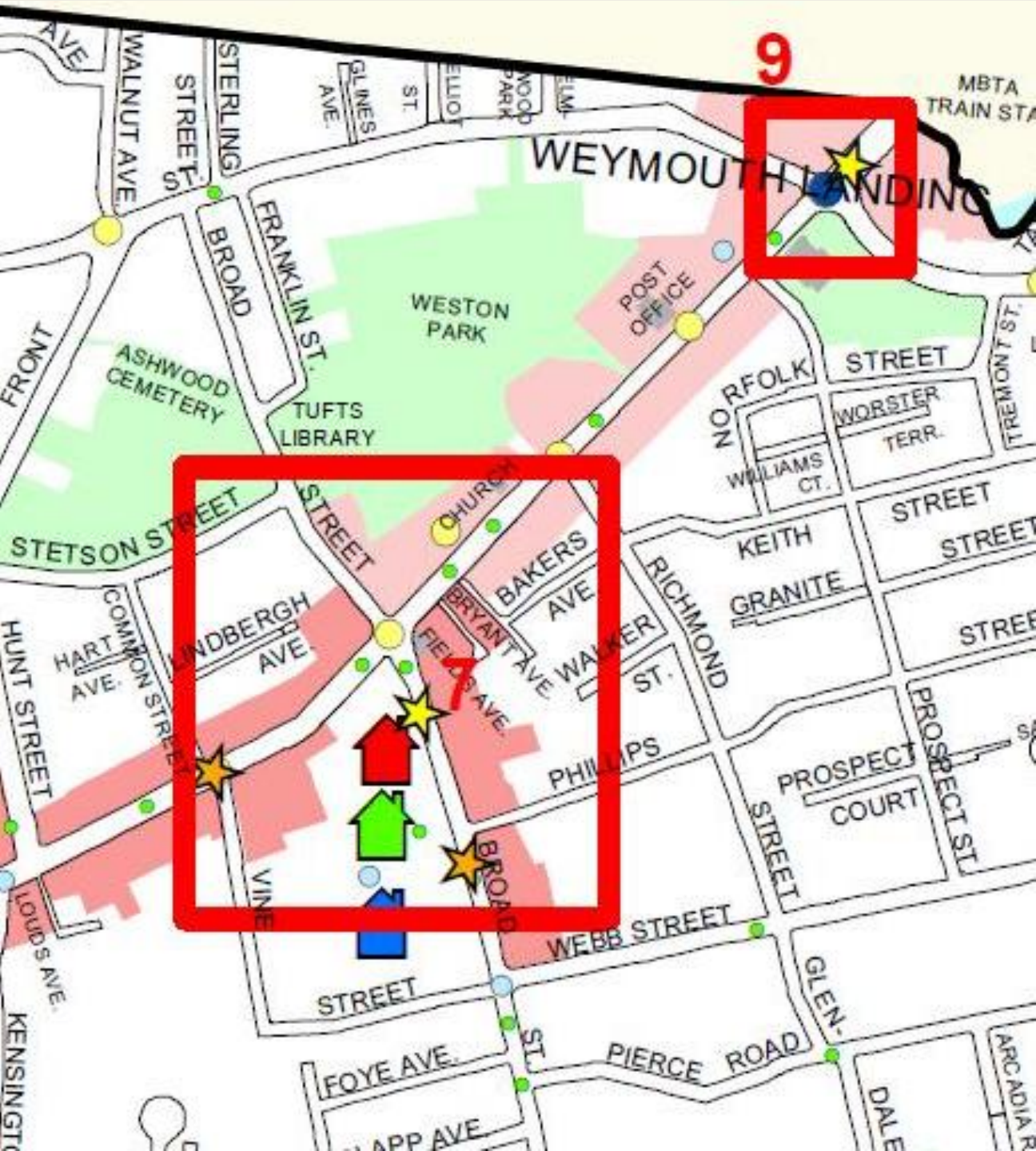
The Town of  
**WEYMOUTH**  
Massachusetts

DATA MAPPING – FINDING THE HOT SPOTS

## Data Considered

- Senior housing
- Relevant zoning districts and land uses
- Pedestrian accidents involving seniors (age 60+)
- Motor vehicles accidents





## SENIOR PEDESTRIAN TARGET AREA

### *Broad & Washington Streets*

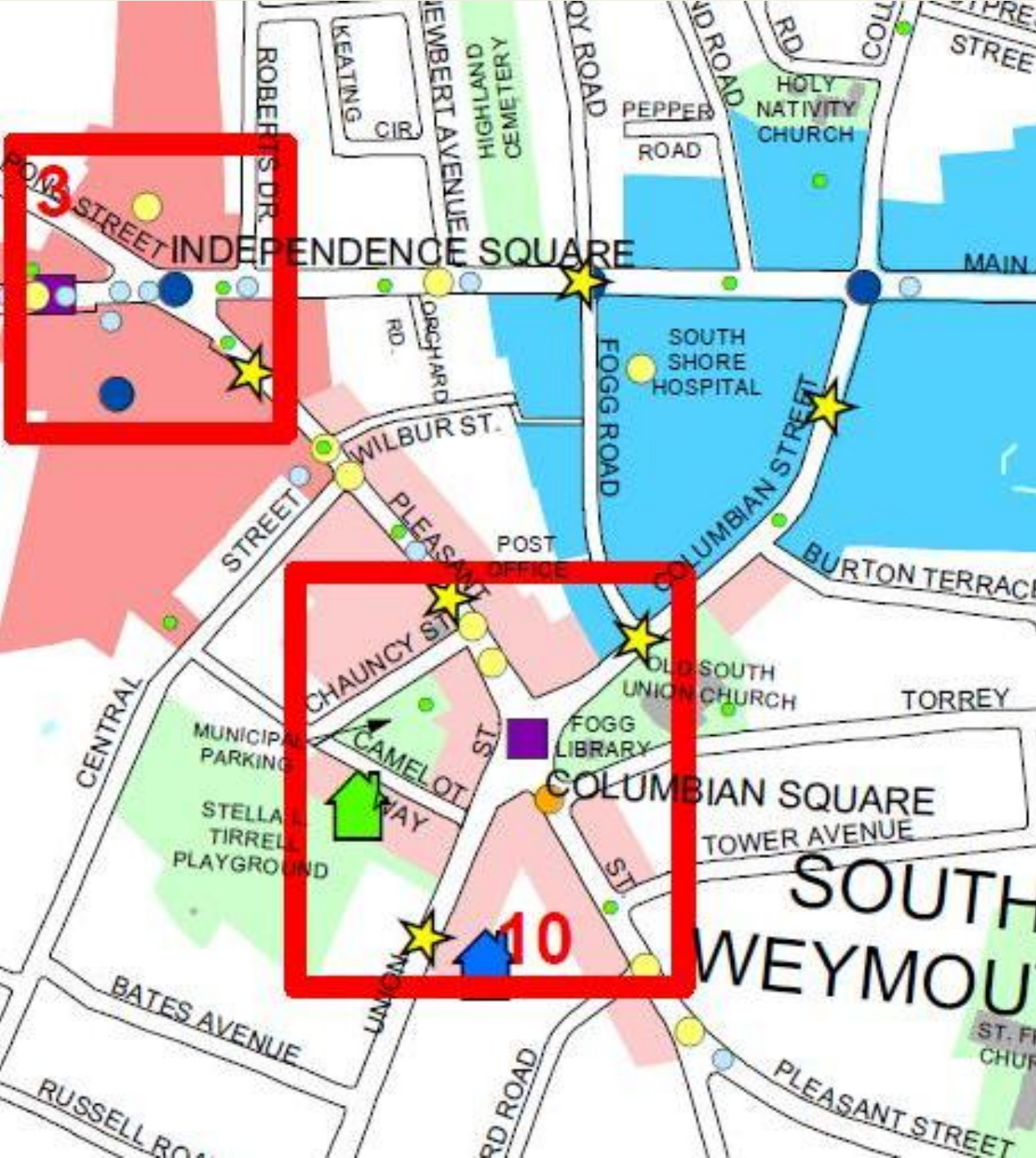
- Multiple senior pedestrian fatalities
- Nearby housing, post office, public library, public park, and shopping
- Popular senior destination: Jimmy's Broad Street Diner



## SENIOR PEDESTRIAN TARGET AREA

### *Columbian Square*

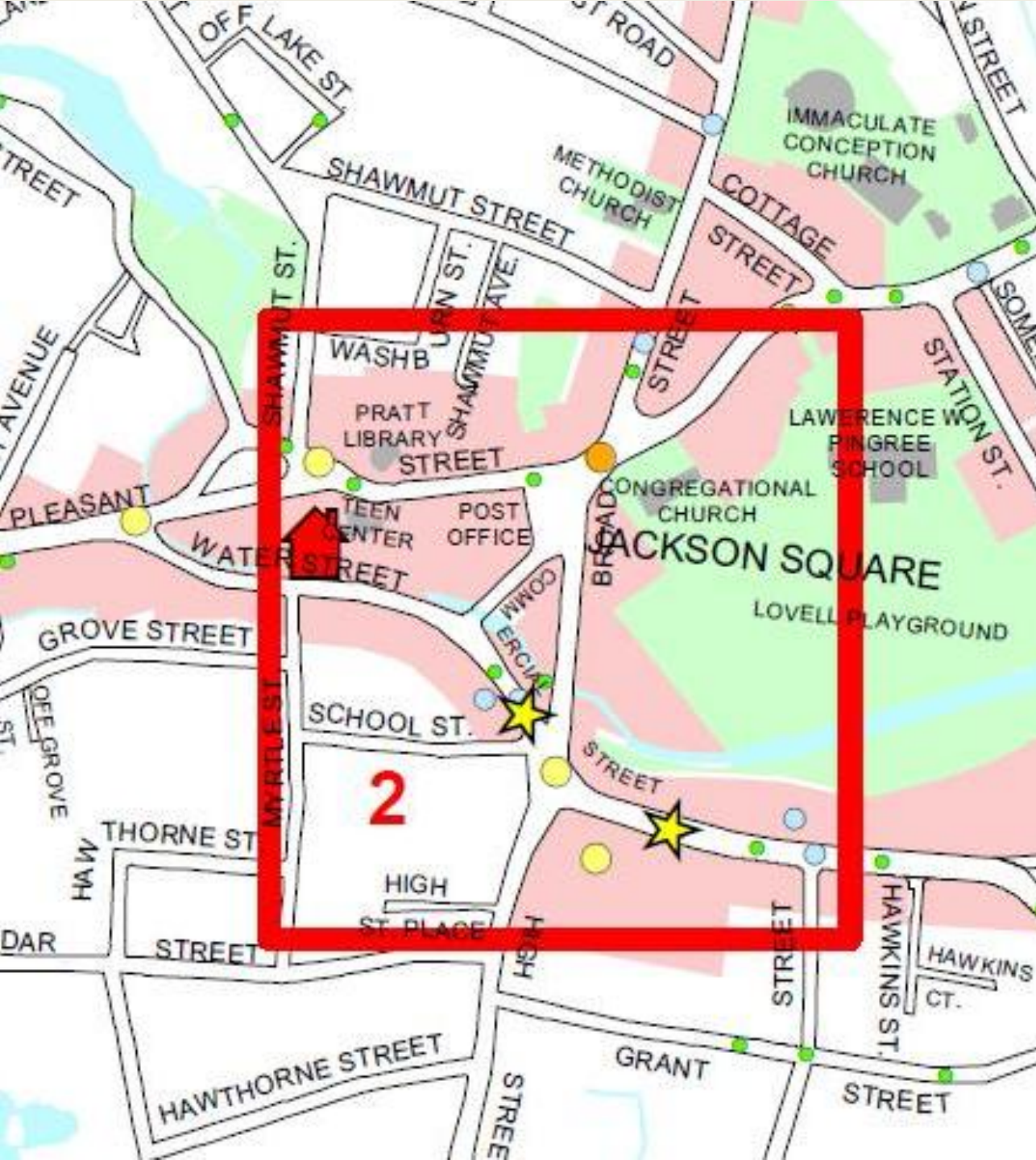
- High foot-traffic area for shopping and medical services
- Multiple senior pedestrian accidents
- Nearby housing, pharmacy, and public library
- High volume of vehicle accidents



## SENIOR PEDESTRIAN TARGET AREA

### *Jackson Square*

- High foot-traffic area for shopping
- Multiple senior pedestrian accidents
- Nearby housing, post office, public library, and public parks
- Modest volume of vehicle accidents





## SENIOR PEDESTRIAN TARGET AREA

### *Bridge & Green Streets*

- Modest foot-traffic area for shopping
- Multiple senior pedestrian accidents
- Nearby housing, public parks, and senior center
- High volume of vehicle accidents

# PICTURE CREDITS

- Cover Slide
  - [www.nyc.gov/html/dot](http://www.nyc.gov/html/dot)
  - [www.transalt.org](http://www.transalt.org)
- Healthy Aging through Healthy Community Design Champions Grant Slide
  - [www.practicalheart.wordpress.com](http://www.practicalheart.wordpress.com)
- Designing Safer Routes for Seniors
  - [www.constructionphotography.com](http://www.constructionphotography.com)





# SAFE ROUTES FOR SENIORS

## *Planning and Design Project*

Presentation Prepared by the Weymouth Department of Planning and  
Community Development