



***Legion Field
&
Lovell Playground***

*Creating a New Foundation
for
Active and Passive
Recreation in Weymouth*



Project Team Introduction

Project Overview

- *Timeline*
- *Where We've Been / What We've Heard*
- *Project Goals*

Where We're Going

- *Legion Field*
- *Lovell Playground Fields*

Questions & Public Comment



Timeline

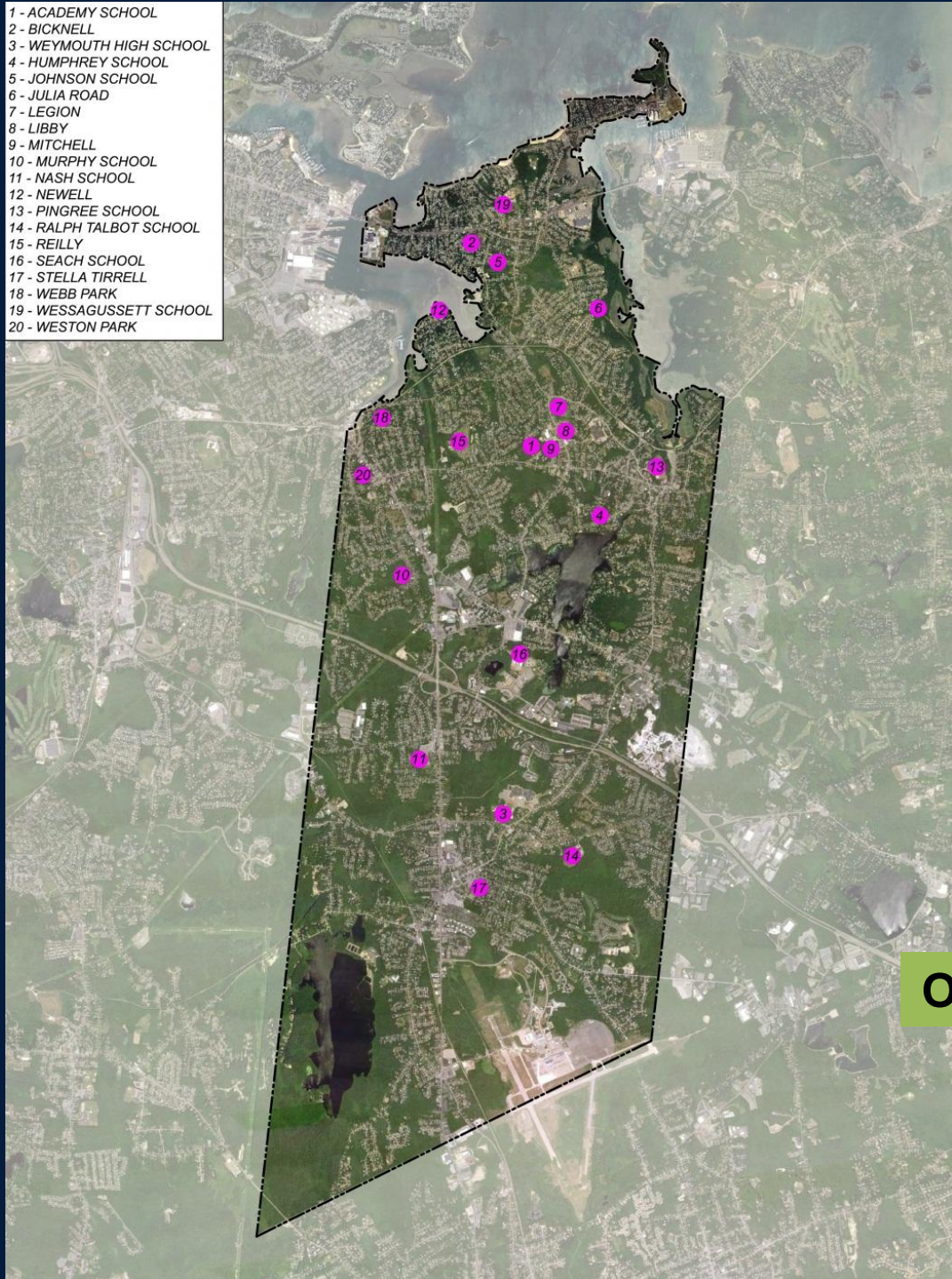
	1920s	1930s	1940s	1950s	1960s	1970s	1980s	1990s	2000s	2010s
Legion In Active Field Layout (1929 Plan)		█	█	█	█	█	█	█	█	█
Legion Used for High School Football & Tennis		█	█	█	█	█	█	█	█	█
Legion Surcharging Program Implemented									█	█
Discussions on Reviving Legion (EPG/CRJ Plan)									█	█
Legion Wetland Replication Project Implemented									█	█
Legion Remains an Inactive Parcel in Town									█	█
Synthetic Turf Feasibility Study										█
Legion & Lovell Playground Design Work										█

	2012					2013					2014													
	J	F	M	A	M	J	J	A	S	O	N	D	J	F	M	A	M	J	J	A	S	O	N	D
Athletic Feasibility Study						█	█	█	█	█	█	█												
Legion/Lovell Design													█	█	█	█	█							
Develop Existing Conditions Information													█	█										
25% Design Submittal																		█	█					
75% Design Submittal																		█	█					
100% Design Submittal																		█	█					
Public Bid Process & Award																		█	█					
Legion Construction																		█	█	█	█	█	█	█



SYNTHETIC TURF FEASIBILITY STUDY

- 1 - ACADEMY SCHOOL
- 2 - BICKNELL
- 3 - WEYMOUTH HIGH SCHOOL
- 4 - HUMPHREY SCHOOL
- 5 - JOHNSON SCHOOL
- 6 - JULIA ROAD
- 7 - LEGION
- 8 - LIBBY
- 9 - MITCHELL
- 10 - MURPHY SCHOOL
- 11 - NASH SCHOOL
- 12 - NEWELL
- 13 - PINGREE SCHOOL
- 14 - RALPH TALBOT SCHOOL
- 15 - REILLY
- 16 - SEACH SCHOOL
- 17 - STELLA TIRRELL
- 18 - WEBB PARK
- 19 - WESSAGUSSETT SCHOOL
- 20 - WESTON PARK



Weymouth Field Usage – Data Prepared by Weymouth Sports Council

Total “Events” Per Year On 16 Fields

Riley (WYS)1	1,278
Riley (WYS)2	1,278
Riley (WYS)3	1,278
Bicknell (WYS/WSC)	584
Seach (Soccer Club)	200
Pingree (Lax/WGS)	916
Mitchell (Lax/Flag Football)	1094
High School Baseball Outfield	865
High School Softball Outfield	865
High School (Behind School)	865
Talbot	432
Talbot	433
Nash	865
Libby (Flag Football)	450
Wessagussett (Girls Soccer)	290
Humphrey Field(Girls Soccer)	290
Legion Field (Not Used)	0

On average, each field is used 500% more than it should be!

RECOMMENDED	120
Average Per Field	749



TOWN OF WEYMOUTH

LEGION AND LOVELL PLAYGROUND 25% FIELD DESIGN REVIEW

activitas

Planning | Landscape | Athletic Facilities

5 DECEMBER 2013

SYNTHETIC TURF
FEASIBILITY STUDY



**RILEY / CENTRAL
FIELDS**



**LOVELL
PLAYGROUND**



LEGION FIELD



BICKNELL FIELD



**RALPH TALBOT
SCHOOL**



NASH ELEM. SCHOOL



TOWN OF WEYMOUTH

LEGION AND LOVELL PLAYGROUND 25% FIELD DESIGN REVIEW

activitas

Planning | Landscape | Athletic Facilities

5 DECEMBER 2013

SYNTHETIC TURF FEASIBILITY STUDY



**RILEY / CENTRAL
FIELDS**



**LOVELL
PLAYGROUND**



LEGION FIELD



BICKNELL FIELD



**RALPH TALBOT
SCHOOL**



NASH ELEM. SCHOOL



SYNTHETIC TURF
FEASIBILITY STUDY

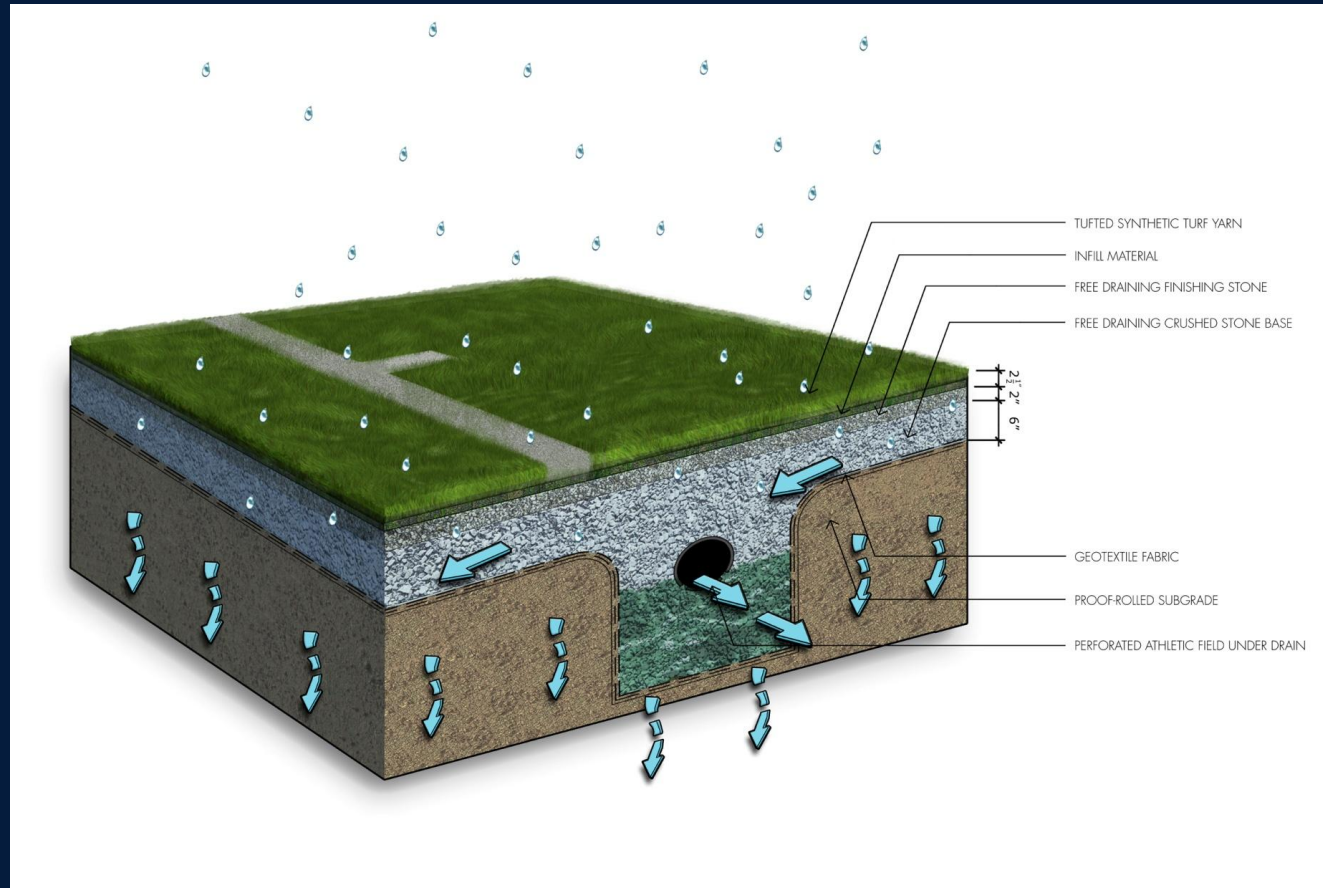


LEGION FIELD



LOVELL PLAYGROUND

Surfacing – Synthetic Turf





DESIGN PROGRESSION
End of Study



LEGION FIELD



LOVELL PLAYGROUND



DESIGN PROGRESSION
25% Design Review



LEGION FIELD



LOVELL PLAYGROUND



Legion Field
Existing Conditions



Site Analysis
Existing Conditions



Site Analysis
Resource Areas – Bordering Vegetated
Wetlands



Site Analysis
Resource Areas – 100' BVW Buffer
Zone



Site Analysis Easements



Site Analysis Existing Slope and Terrain



Site Analysis
Solar – Summer/Winter Solstice



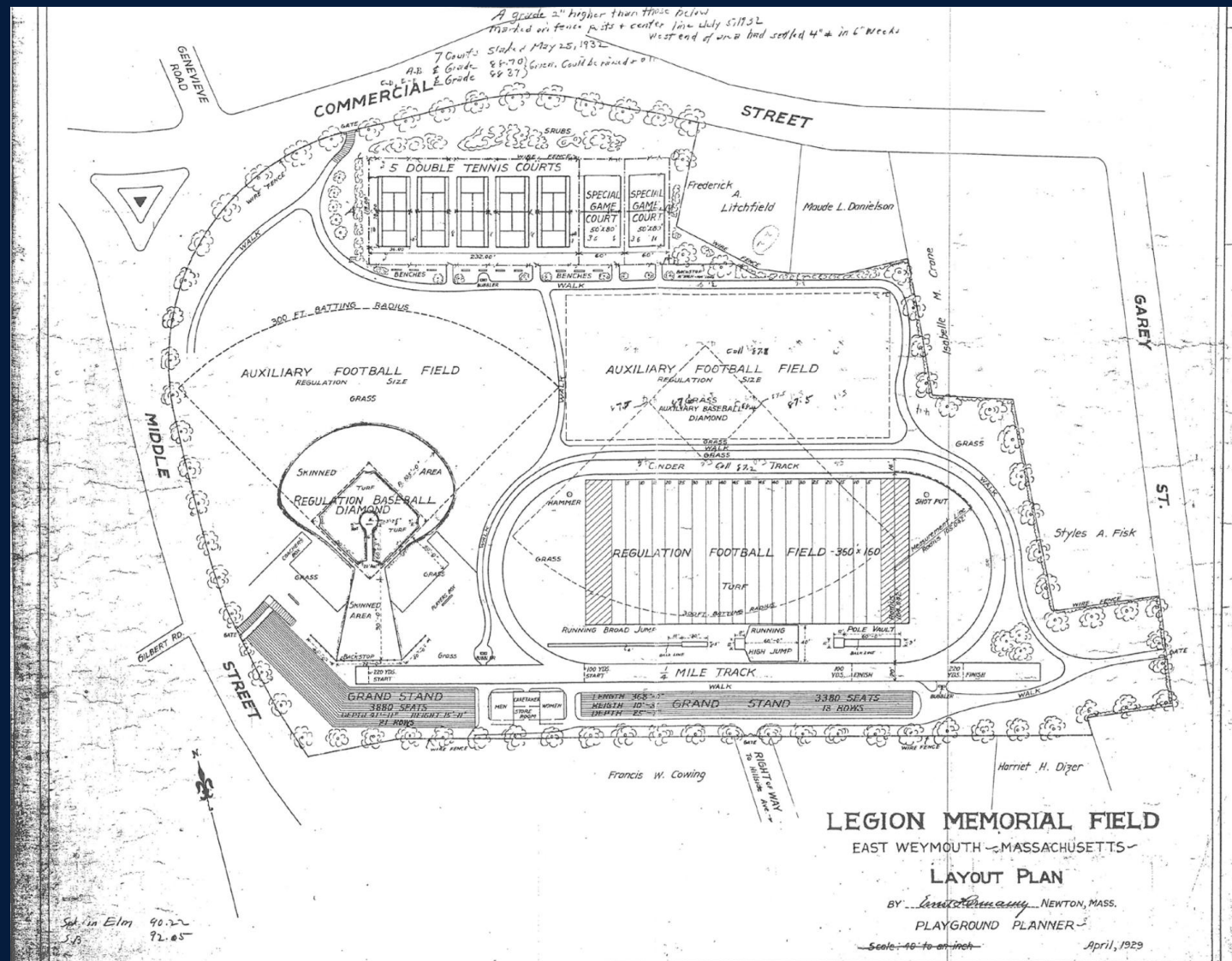
Site Analysis Prevailing Winds



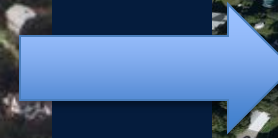
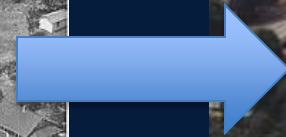
- Borings were completed at the site
- Borings showed approximate depth to groundwater at 6' below current finish grade
- In the areas of the field, design plans to “unload” the site



Site Analysis Preliminary Geotechnical Findings



Legion Field 1929 Plan



Legion Field
Existing Conditions Transition



Legion Field
Matthew Soule Plan



- Refined field size to allow for shifting of the field
- Improved vehicular access, drop-off and parking at site
- Further considered resource area improvements and access



Legion Field
Original Study Layout



- Considering synthetic turf allows increased passive recreational space



Legion Field
Interim Design 1



- Moved parking to the edge of the site



Legion Field
Interim Design 2



- Flipped the tennis location to create an active “core”
- Increased passive space to the east of the site
- Improved layouts for playground locations
- Improved buffer for neighborhood



- Requires filling of a small resource area to the north of the parking lot – provide wetland replication along the existing resource areas to the east

Legion Field
Interim Design 3



Legion Field
Current Design



TOWN OF WEYMOUTH

LEGION AND LOVELL PLAYGROUND 25% FIELD DESIGN REVIEW

activitas

Planning | Landscape | Athletic Facilities

5 DECEMBER 2013



Legion Field
Precedent Photos



Legion Field
Active vs. Passive



Legion Field
Current Design



Legion Field
Lookout at Middle Street



TOWN OF WEYMOUTH

LEGION AND LOVELL PLAYGROUND 25% FIELD DESIGN REVIEW

activitas

Planning | Landscape | Athletic Facilities

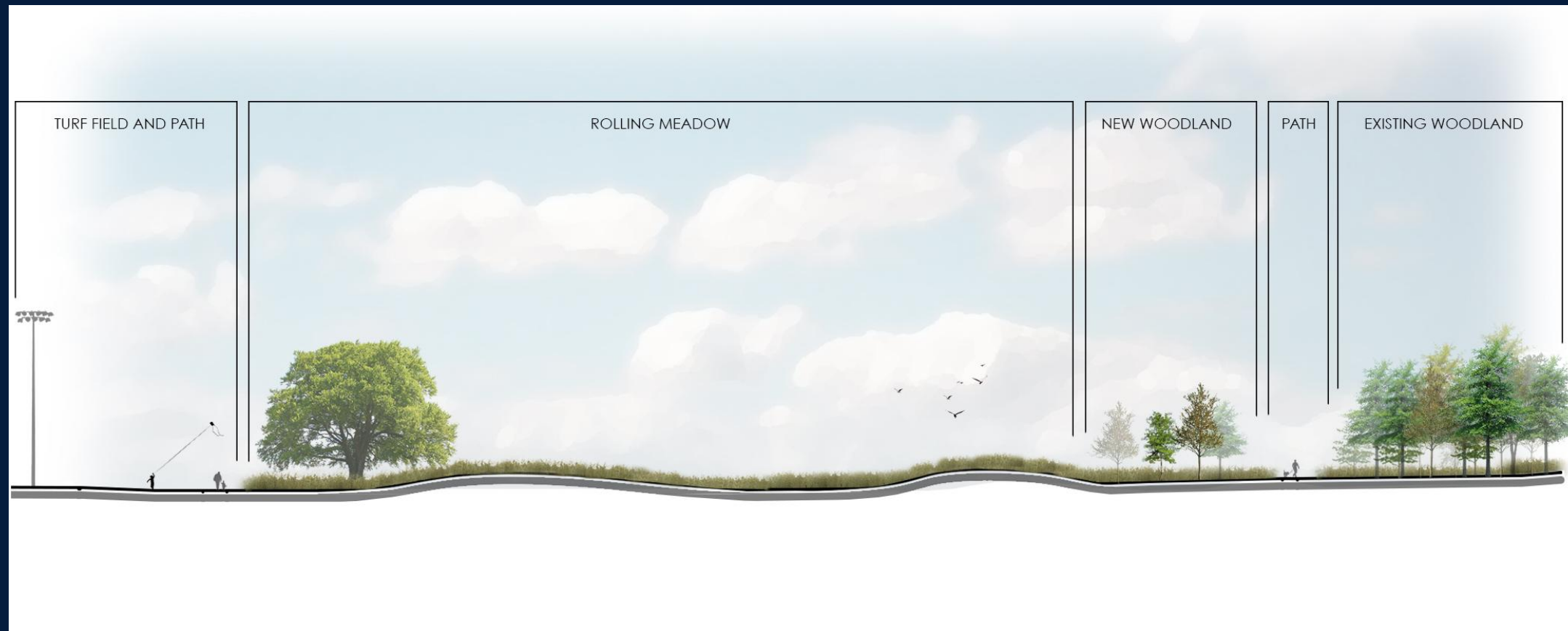
5 DECEMBER 2013



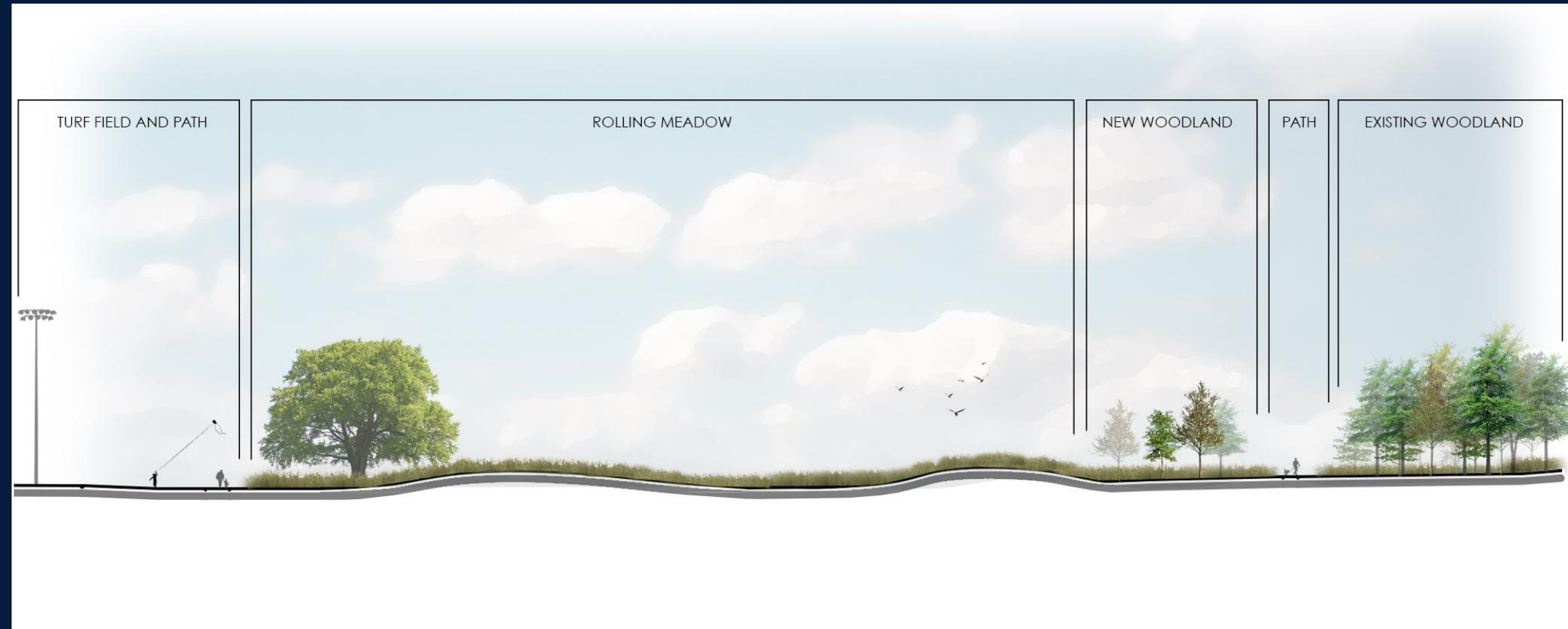
Legion Field
Lookout at Middle Street



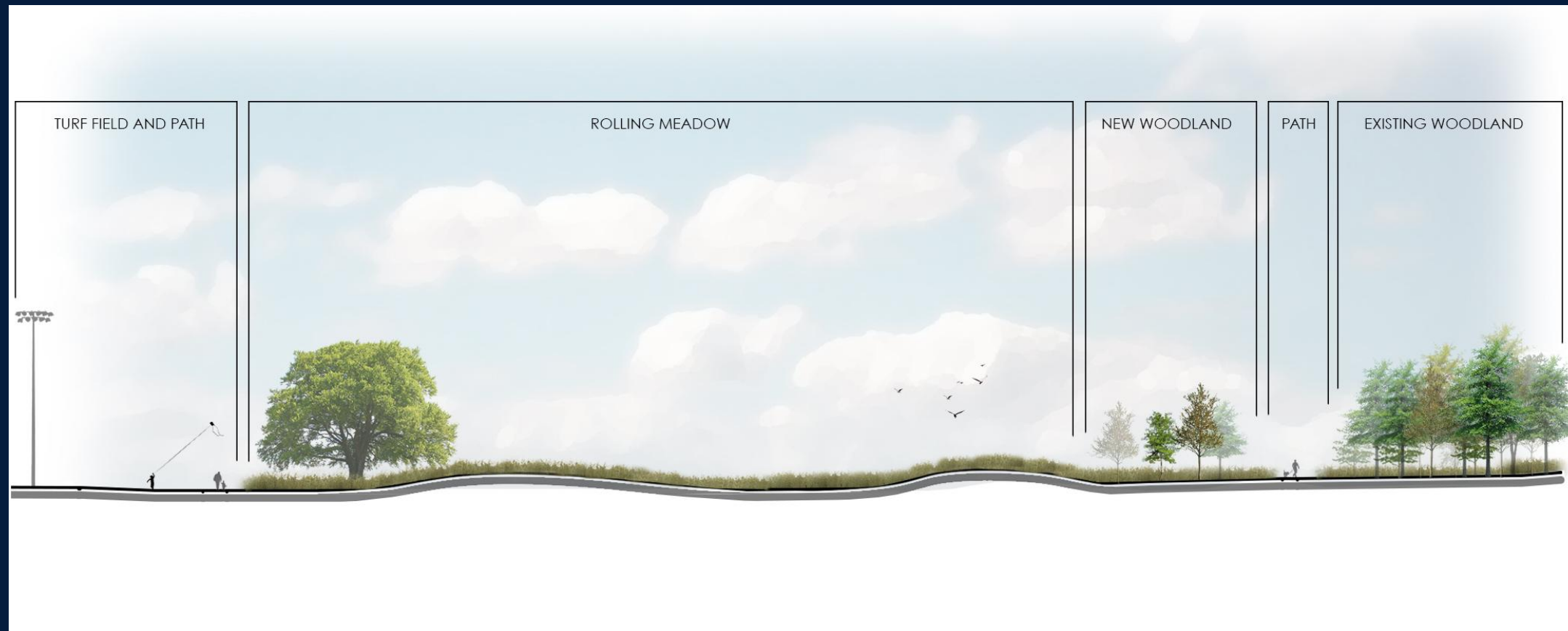
Legion Field
Lookout at Middle Street



Legion Field
Meadow



Legion Field Meadow



Legion Field Meadow



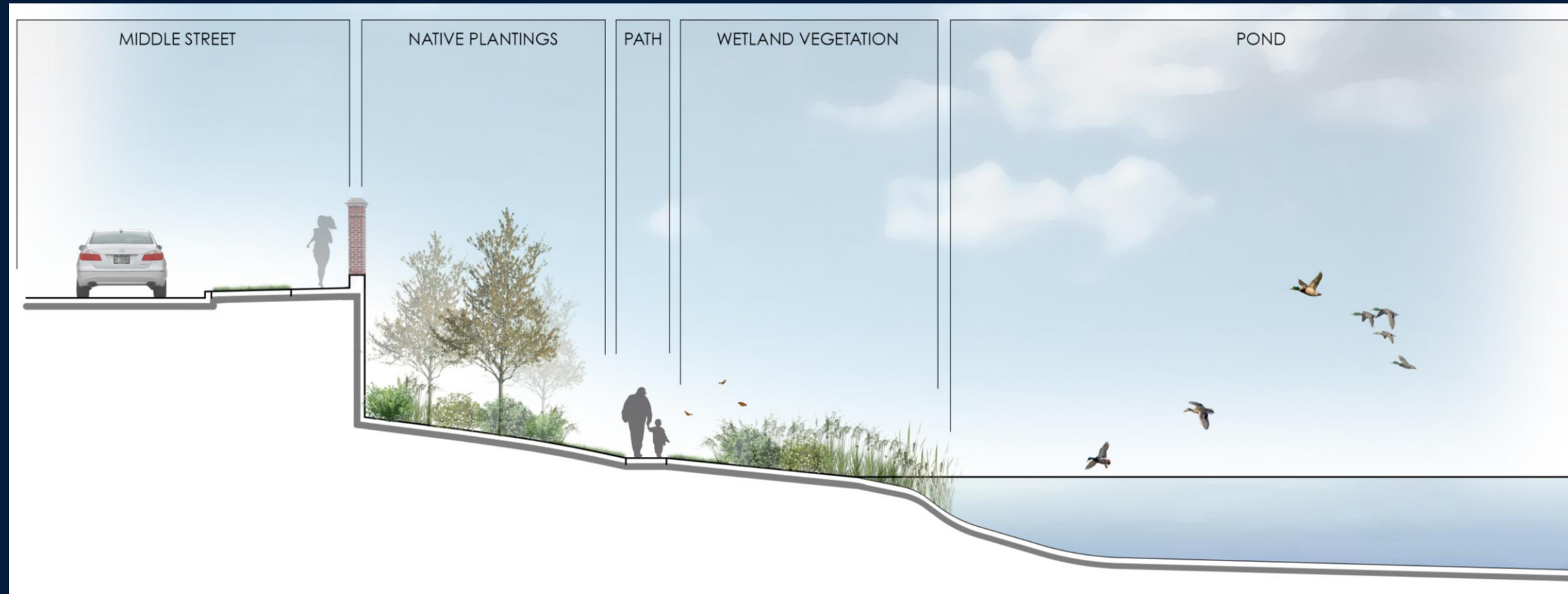
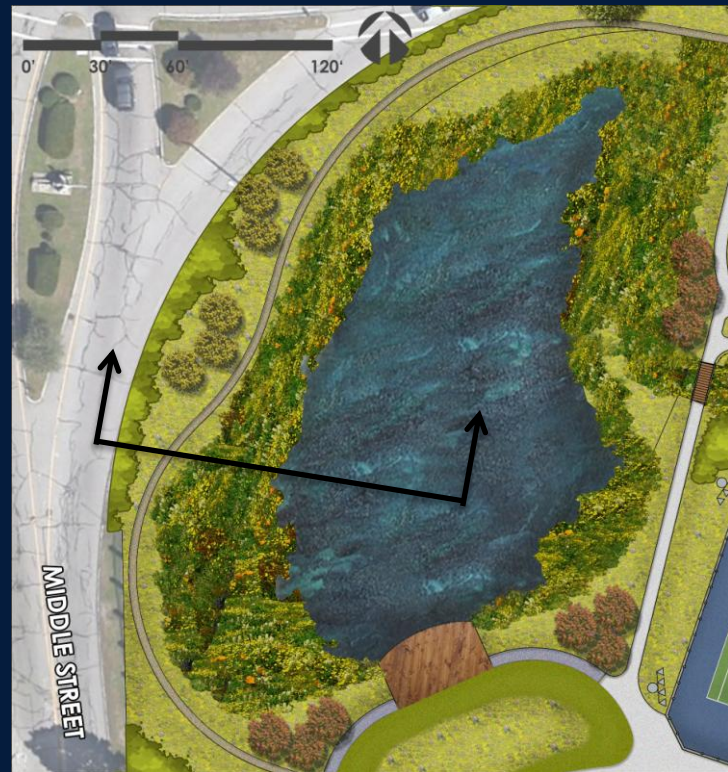
TOWN OF WEYMOUTH

LEGION AND LOVELL PLAYGROUND 25% FIELD DESIGN REVIEW

activitas

Planning | Landscape | Athletic Facilities

5 DECEMBER 2013



Legion Field
Wall-Pond Area



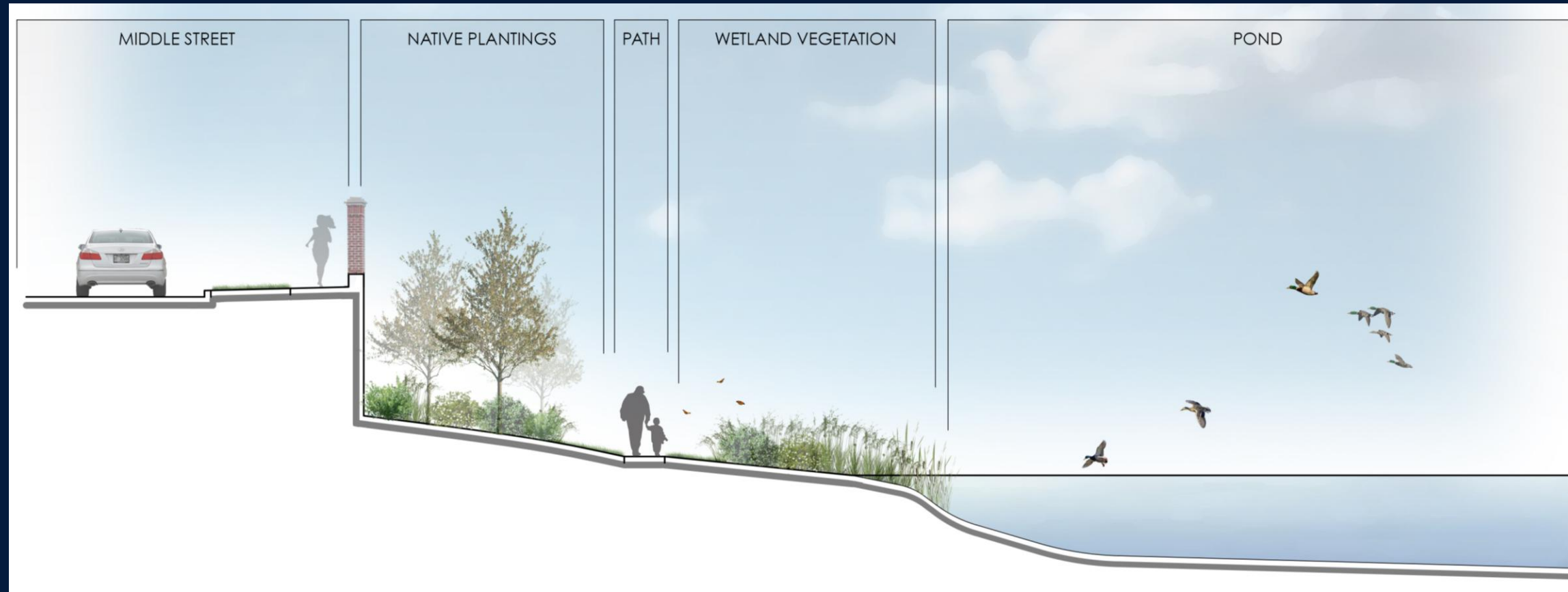
TOWN OF WEYMOUTH

LEGION AND LOVELL PLAYGROUND 25% FIELD DESIGN REVIEW

activitas

Planning | Landscape | Athletic Facilities

5 DECEMBER 2013



Legion Field
Wall-Pond Area



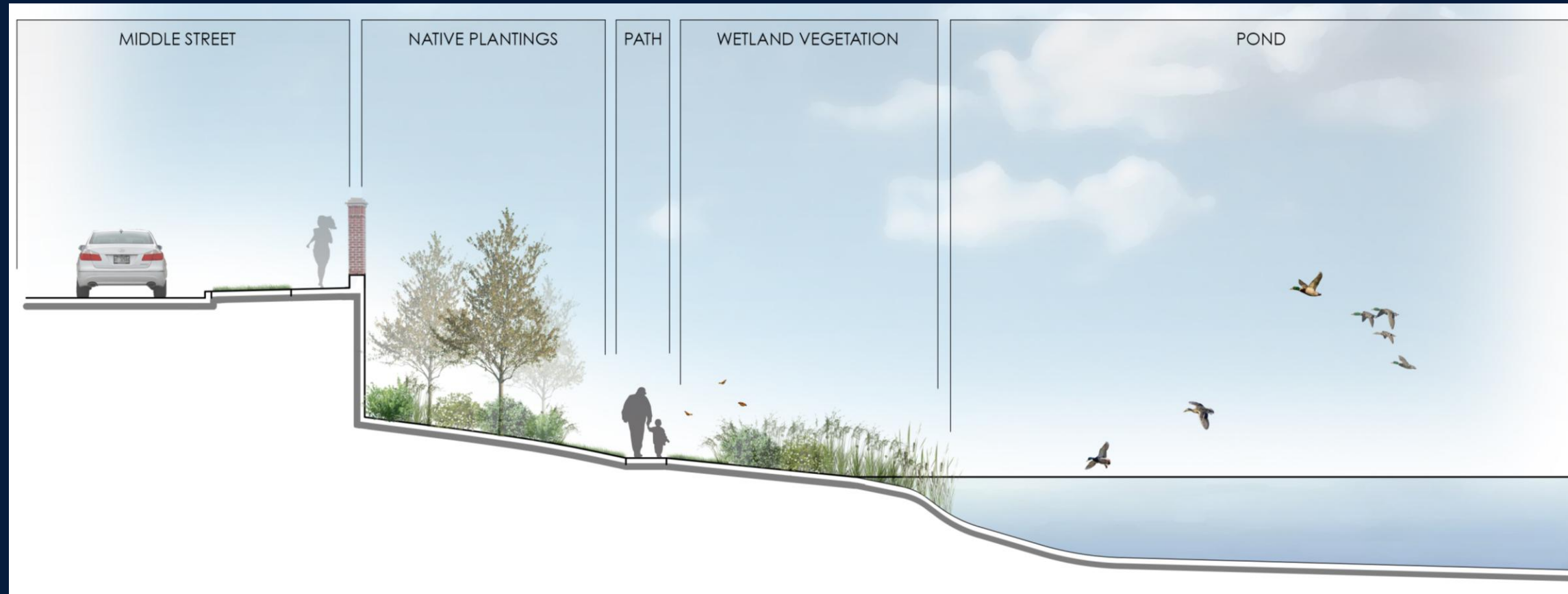
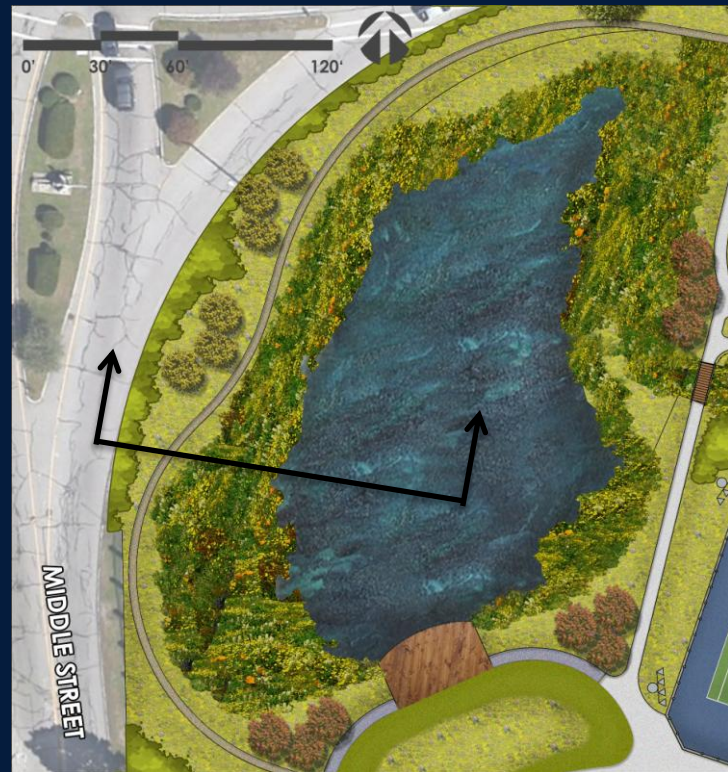
TOWN OF WEYMOUTH

LEGION AND LOVELL PLAYGROUND 25% FIELD DESIGN REVIEW

activitas

Planning | Landscape | Athletic Facilities

5 DECEMBER 2013



Legion Field
Wall-Pond Area



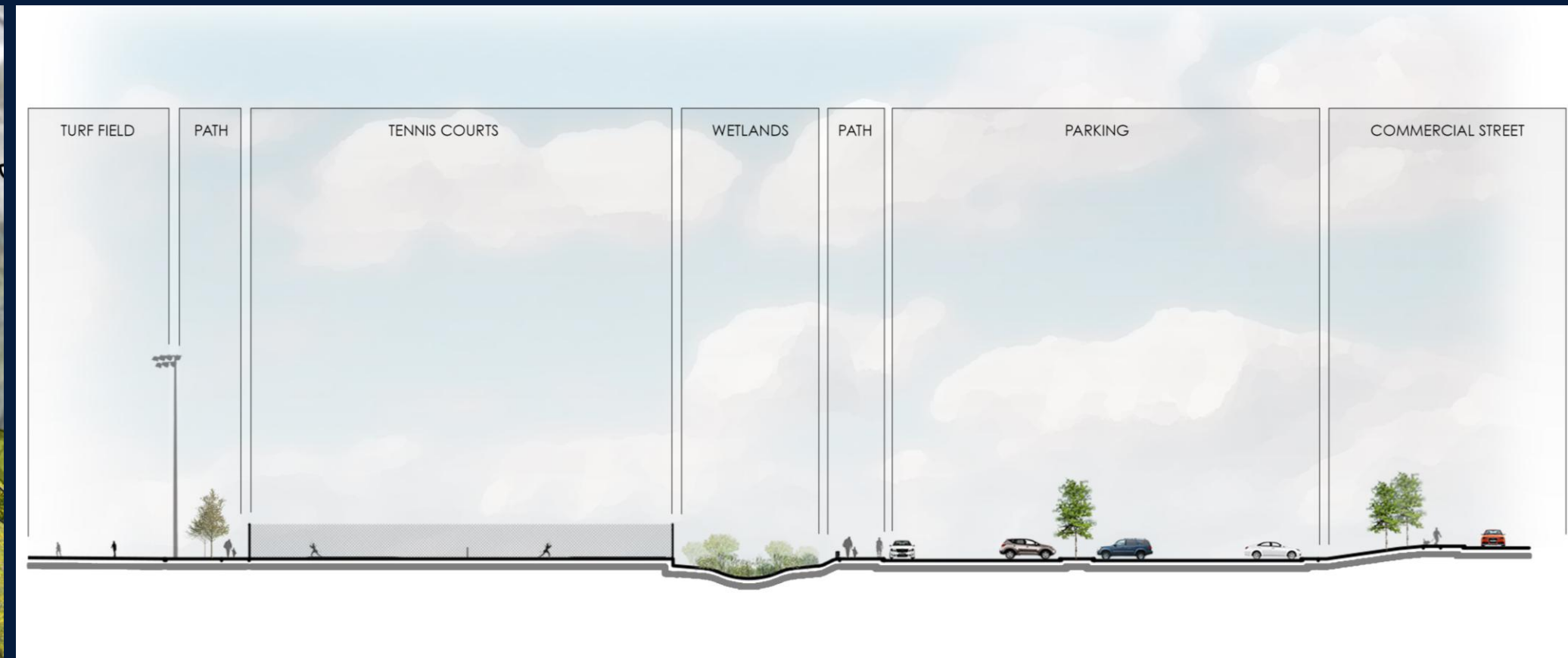
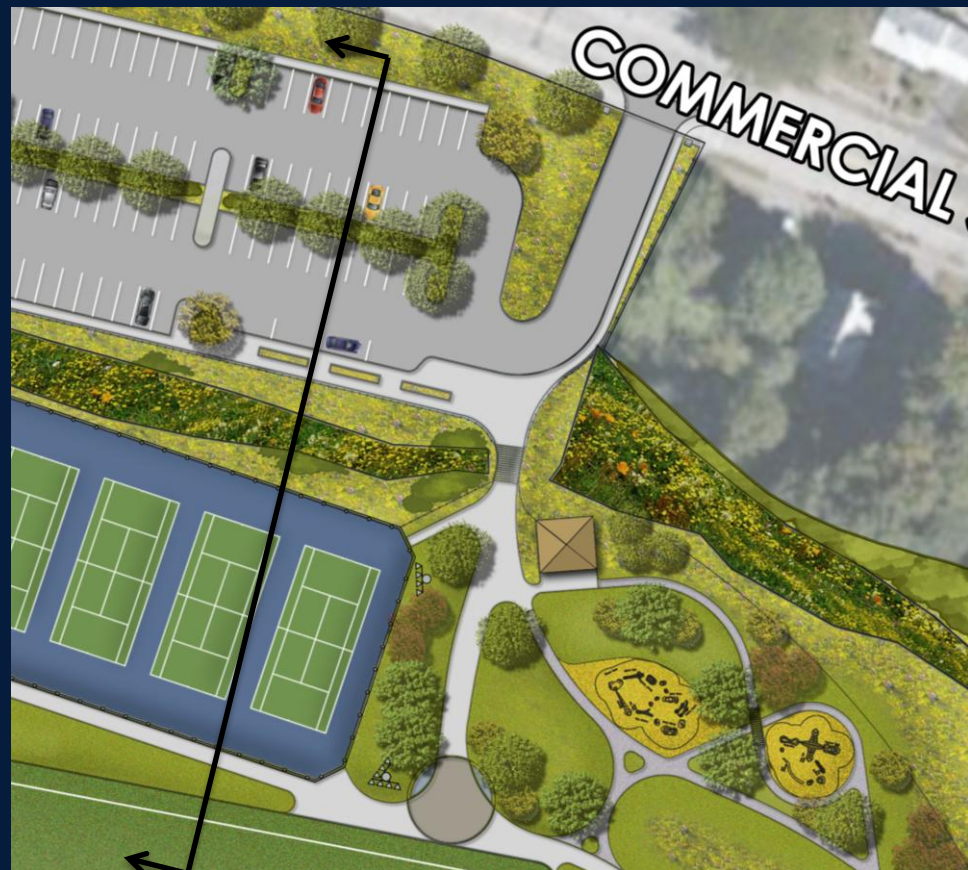
Legion Field
Arrival Experience - Main Entrance



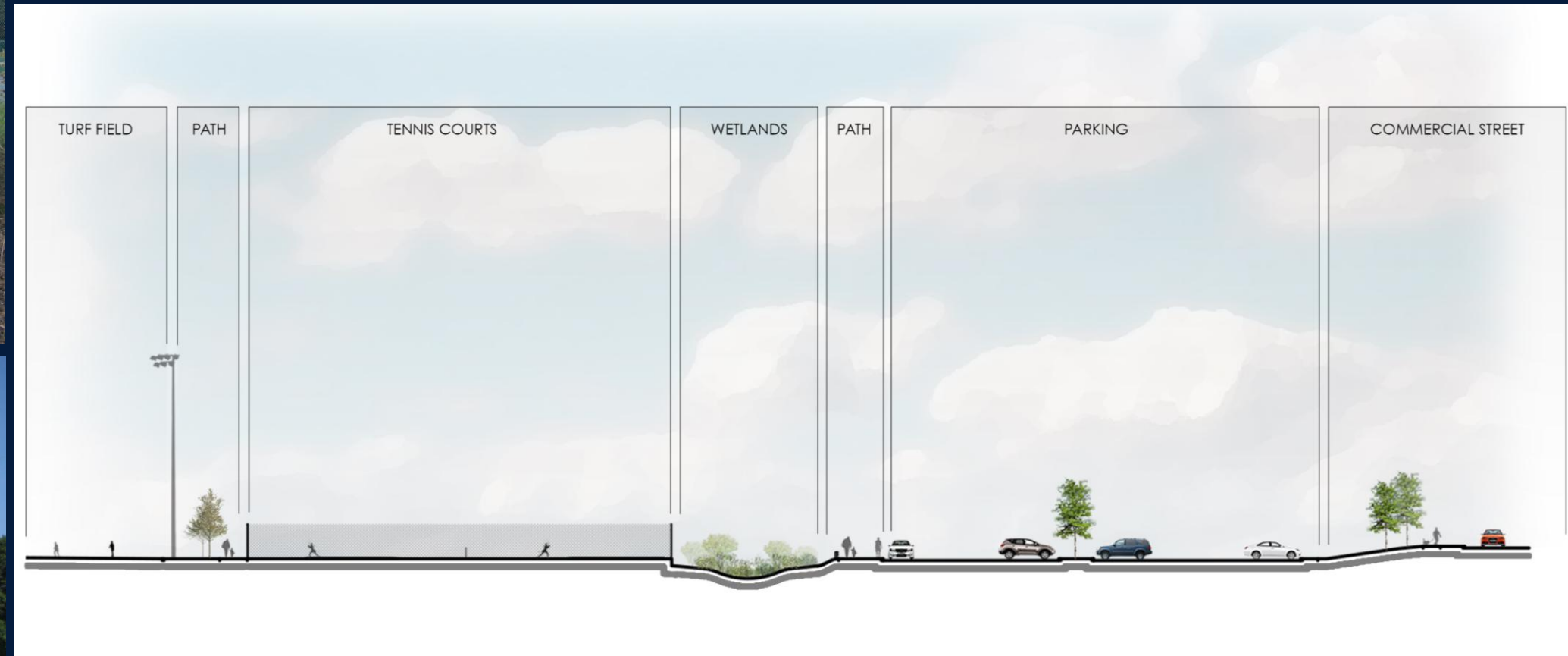
Legion Field
Arrival Experience - Existing



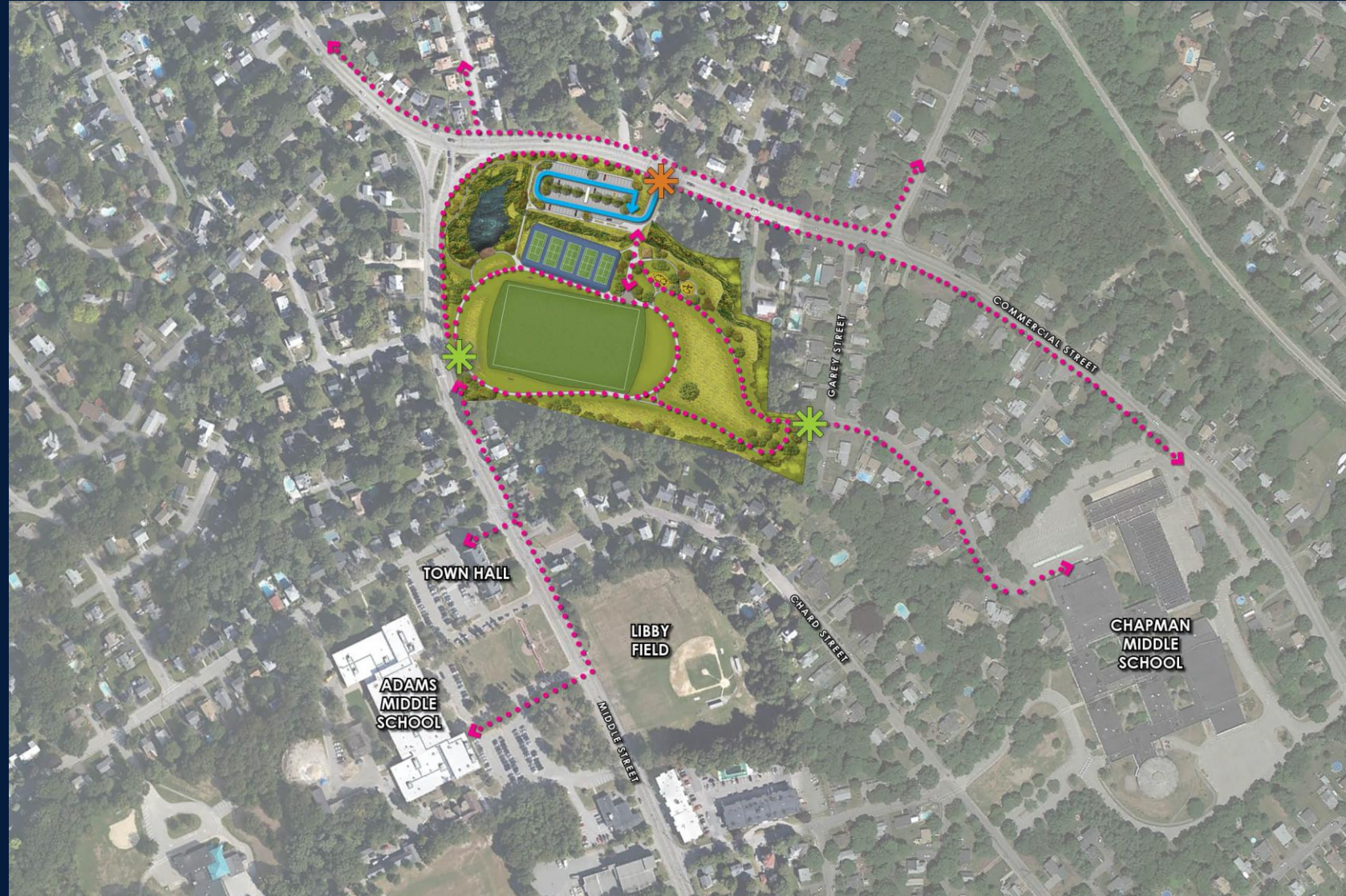
Legion Field
Arrival Experience - Proposed



Legion Field
Arrival Experience - Section



Legion Field
Arrival Experience - Section



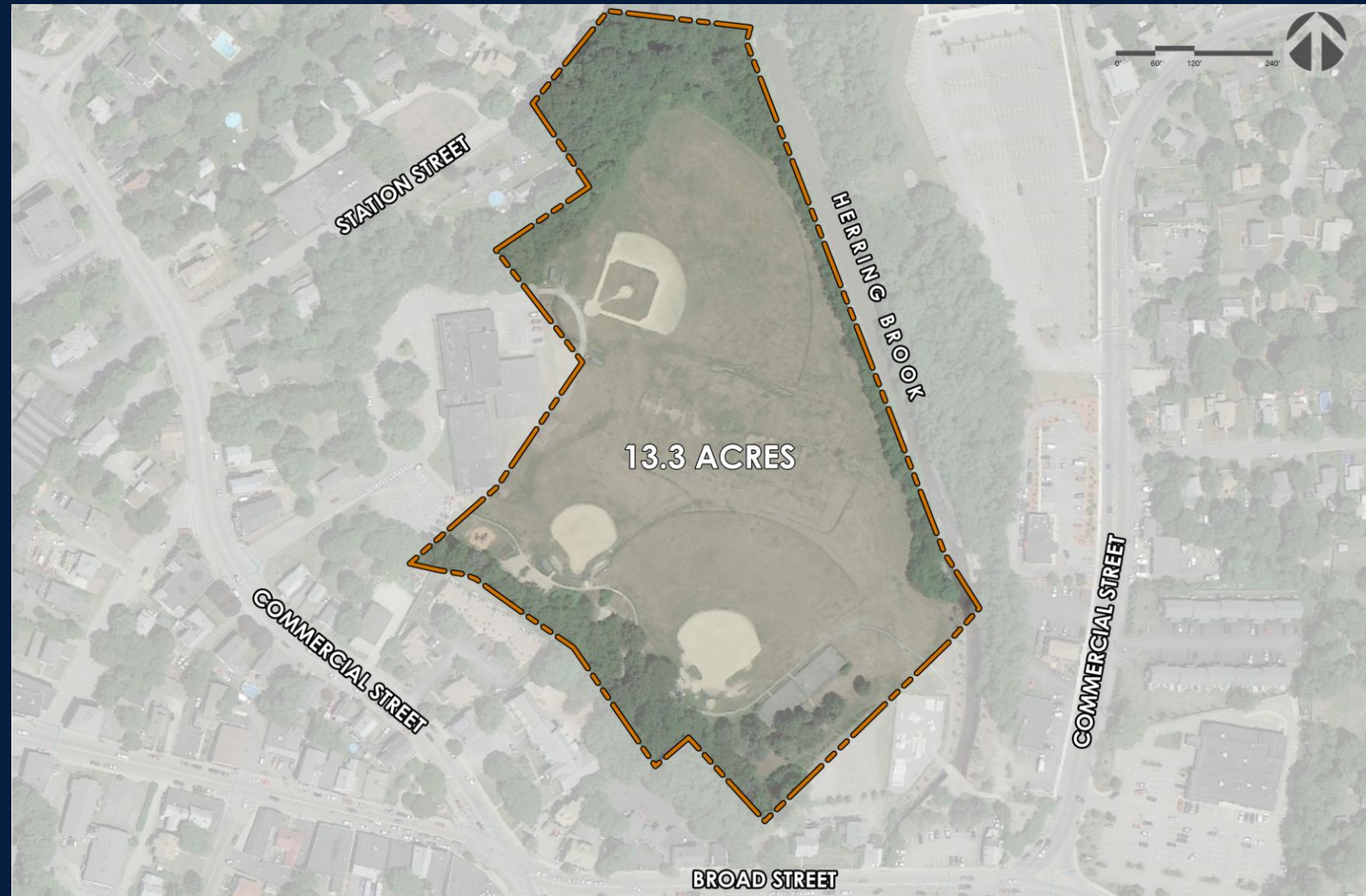
Legion Field Connectivity & Circulation



Legion Field
Restoring of a Proud History



Lovell Playground



Site Analysis Existing Conditions



Site Analysis

Resource Area – Bordering Vegetated Wetland



Site Analysis

Resource Area – 100' BVW Buffer Zone



Site Analysis Resource Area – Riverfront Bank



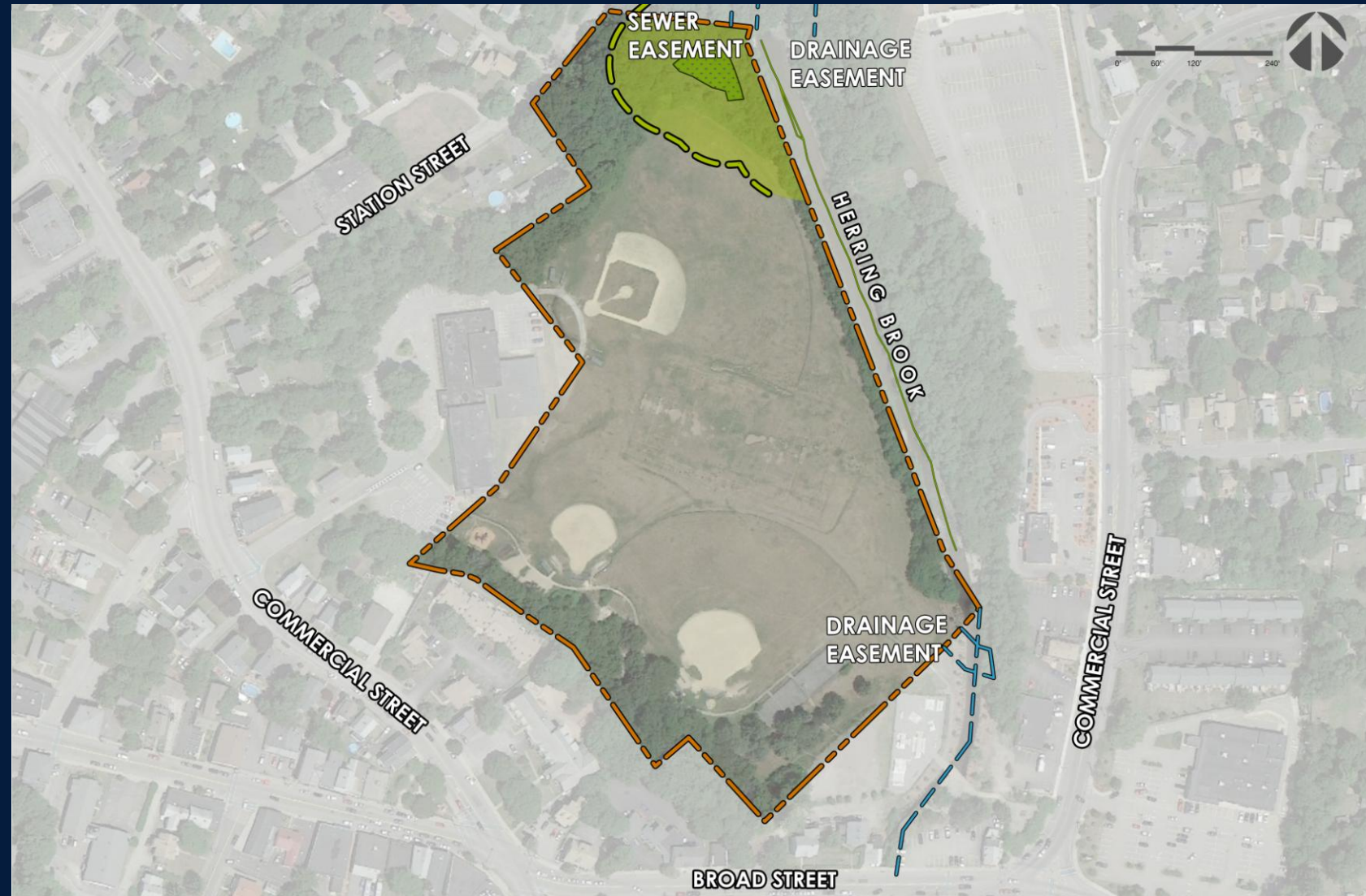
Site Analysis

Resource Area – Riverfront Inner Riparian Zone
(100')



Site Analysis

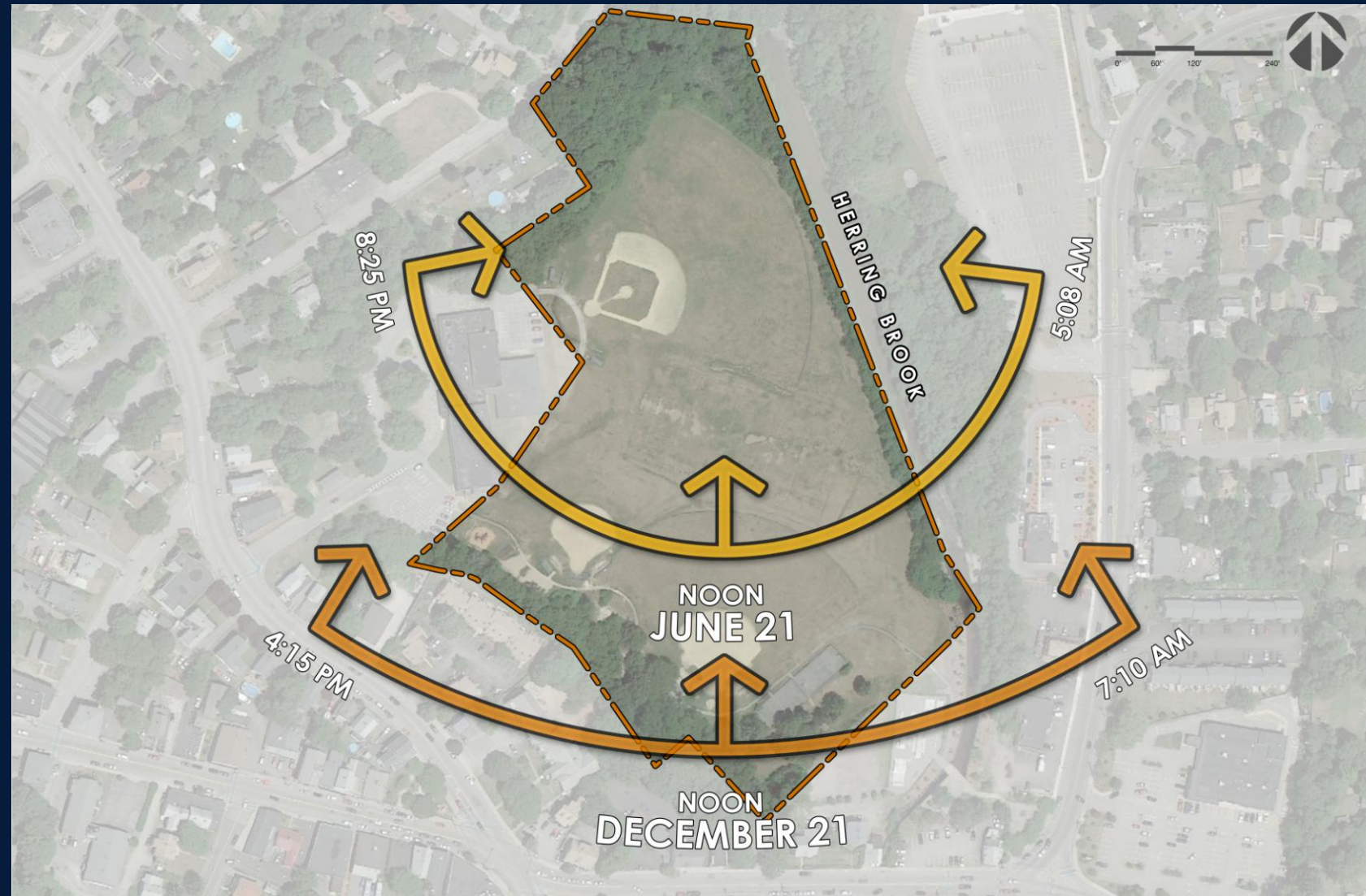
Resource Area – Riverfront Outer Riparian Zone
(200')



Site Analysis Easements



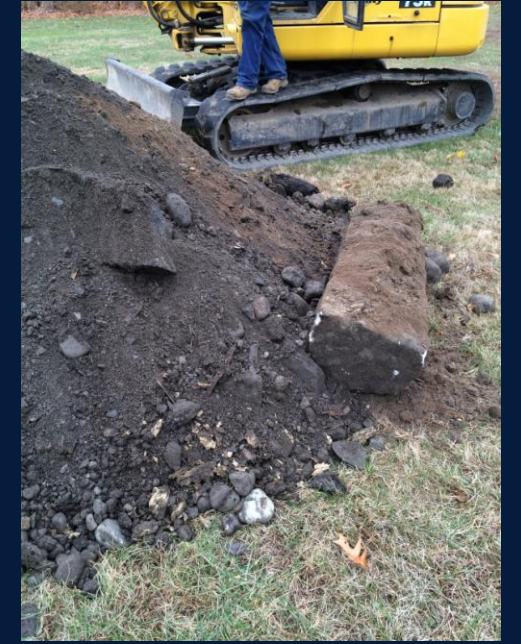
Site Analysis Existing Slope and Terrain



Site Analysis
Solar – Summer/Winter Solstice



Site Analysis
Prevailing Winds



Site Analysis Preliminary Geotechnical Findings



- Revised Site Program, Very Tight
- Provided More Parking through School Drive
- Considered Parking from Broad Street
- Use of Fitness Stations
- Maintained Pedestrian Access to Commercial Street Park



Lovell Playground Original Study Layout



- Increased Parking
20 to 170
- Improved Access
from Broad Street
- Altered BB Court
Location



Lovell Playground
Interim Design 1



- Rotated & Staggered the Fields for Better Buffer at Herring Brook; Improved Game Management with Staggered Midfields
- Provided Vehicular Access Through the Site, Connecting the Broad Street Lot to the Pingree School Lot



Lovell Playground Interim Design 2

- Adjusted the Broad Street Parking Layout for Better Water Quality Treatment Locations; Connection to Commercial St. Park and Adjacent Parcels
- Removed the SB Field Layout to Increase Open Space Adjacent to the School
- Removed the Small Field for Improved Parking/Drop-Off at the BB Courts



- Additional BB Court
- Pulled the Play Equipment Away from the School Building
- Athletic Lighting at all Fields and Courts
- Increased Program Items include the Parking & Drive and the required Subsurface Ground improvements based on Geotechnical Findings



Lovell Playground
Current Design



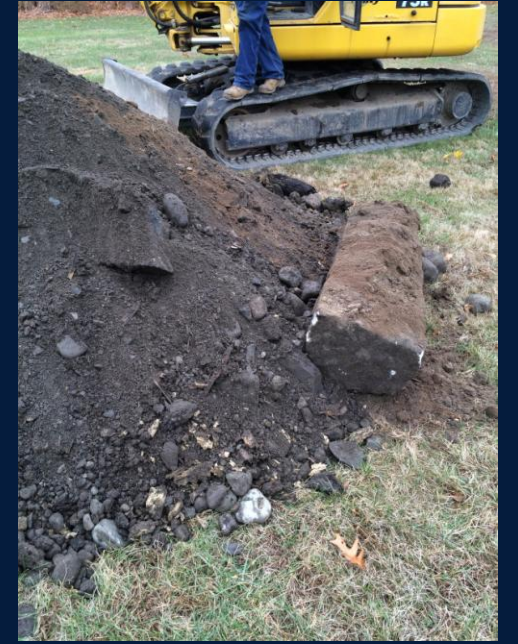
TOWN OF WEYMOUTH

LEGION AND LOVELL PLAYGROUND 25% FIELD DESIGN REVIEW

activitas

Planning | Landscape | Athletic Facilities

5 DECEMBER 2013



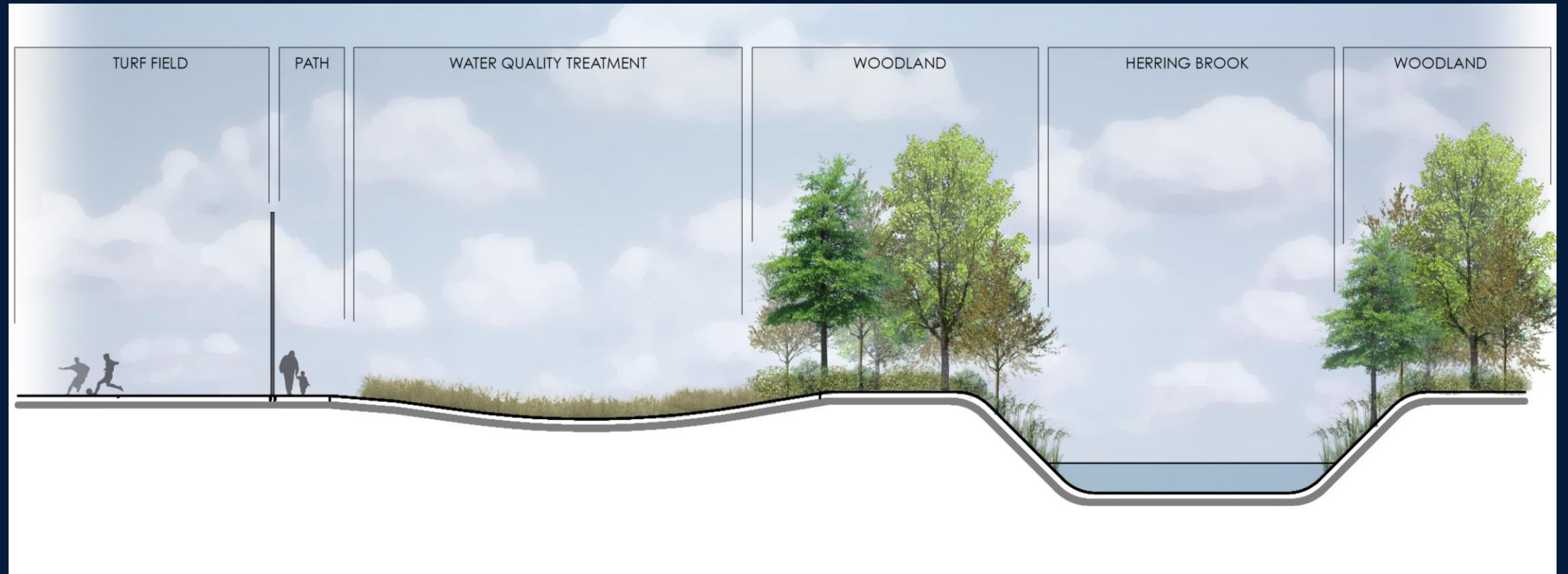
Lovell Playground
Current Design



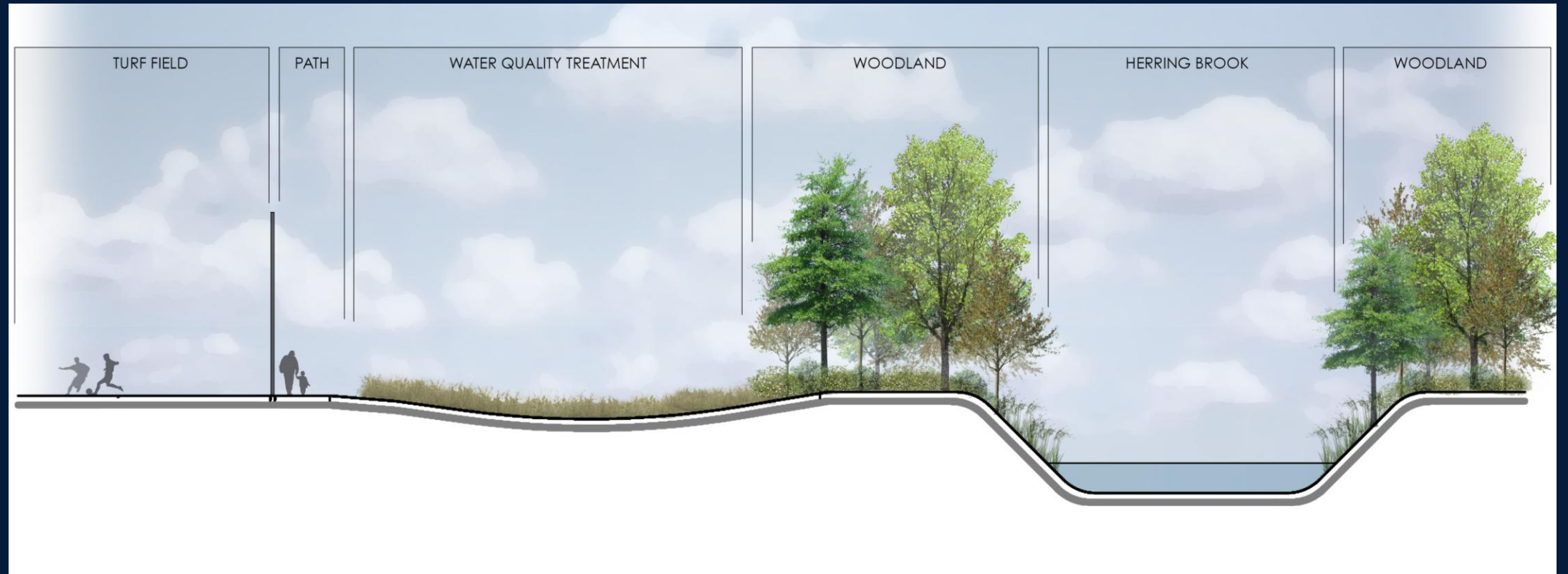
- Additional BB Court
- Pulled the Play Equipment Away from the School Building
- Athletic Lighting at all Fields and Courts
- Increased Program Items include the Parking & Drive and the required Subsurface Ground improvements based on Geotechnical Findings



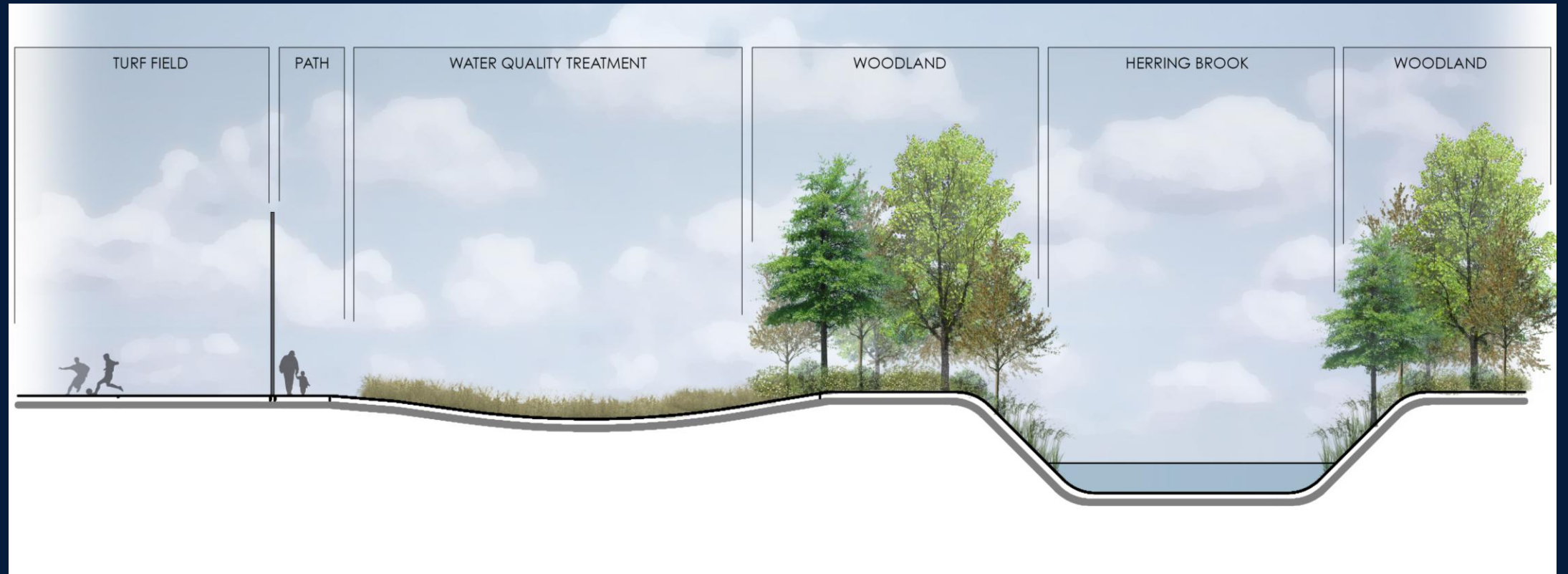
Lovell Playground
Current Design



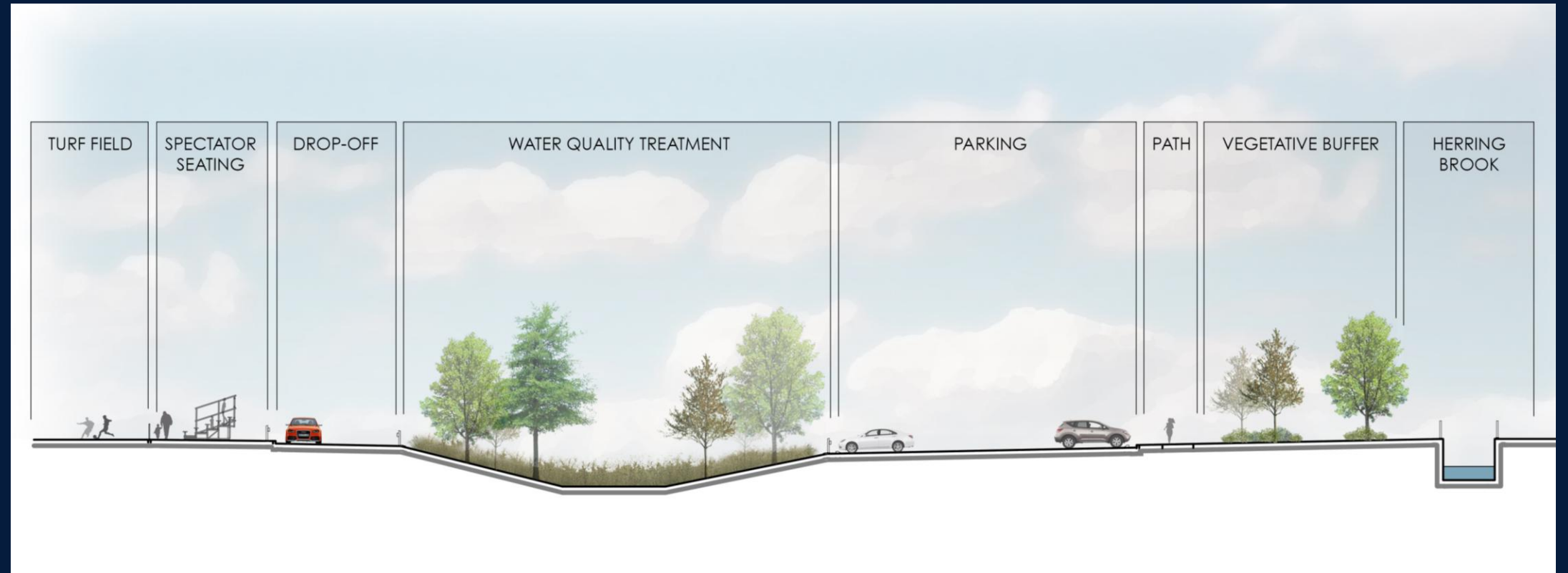
Lovell Playground
Site Sections



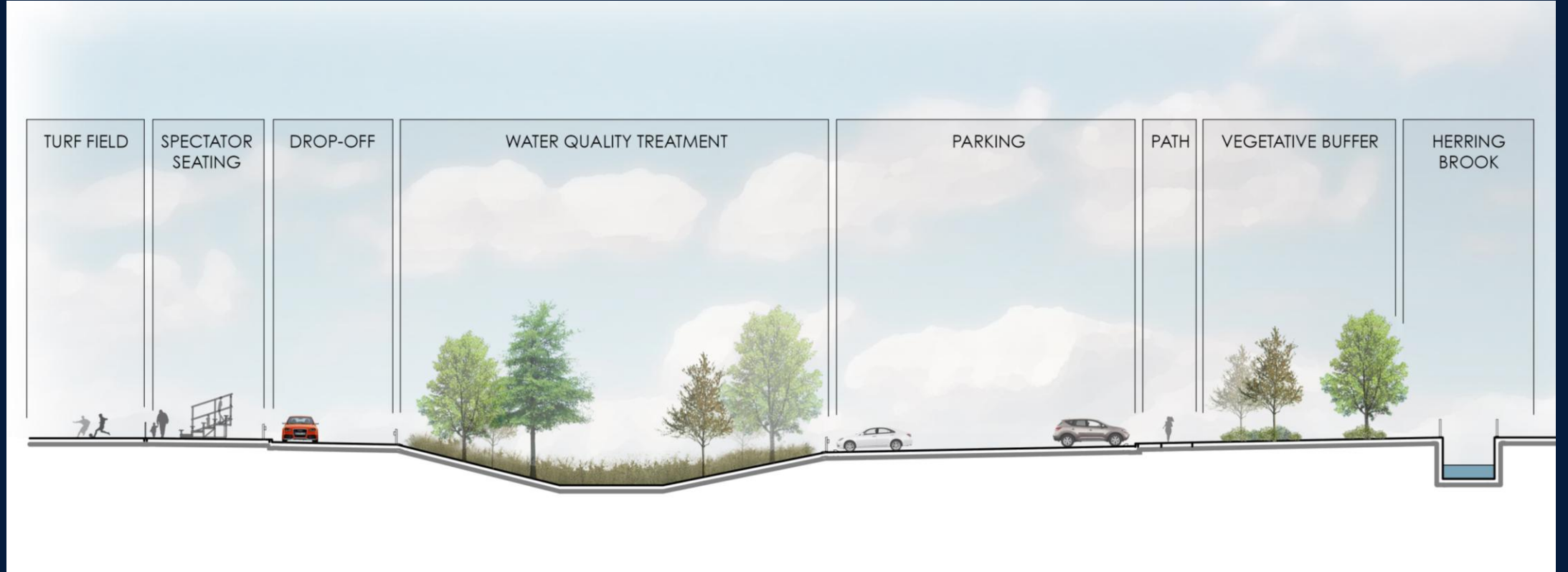
Lovell Playground Site Sections



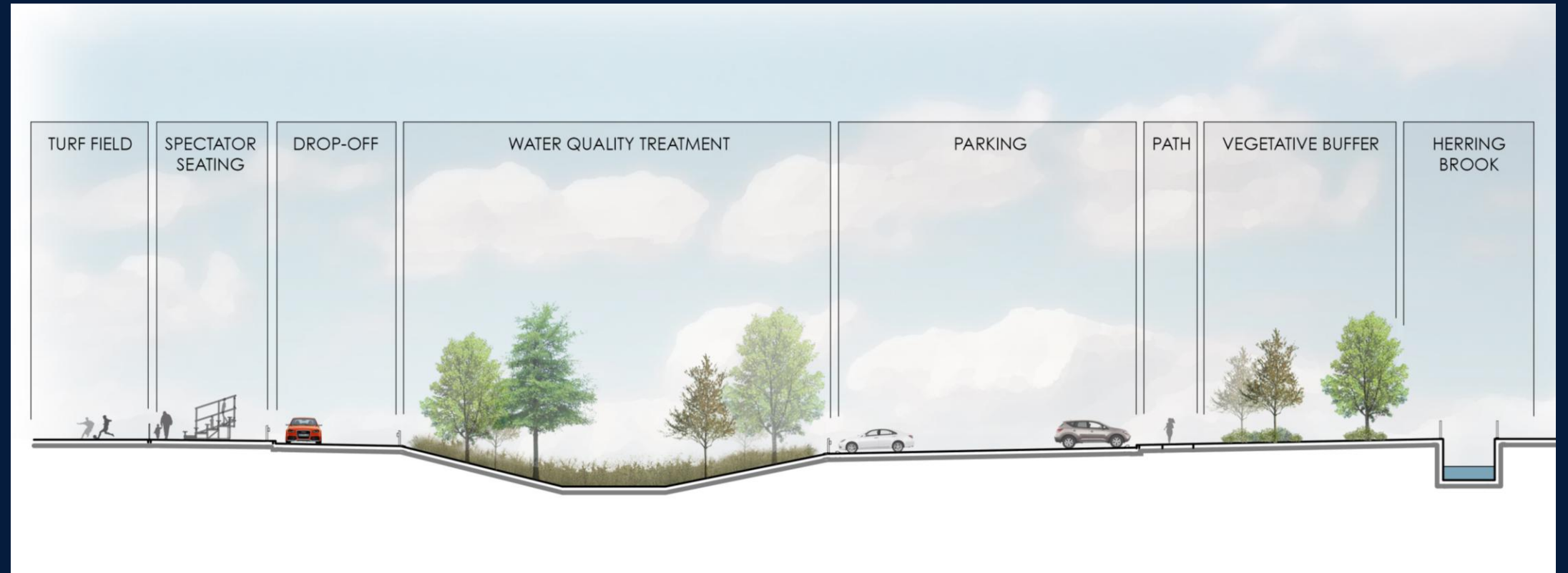
Lovell Playground Site Sections



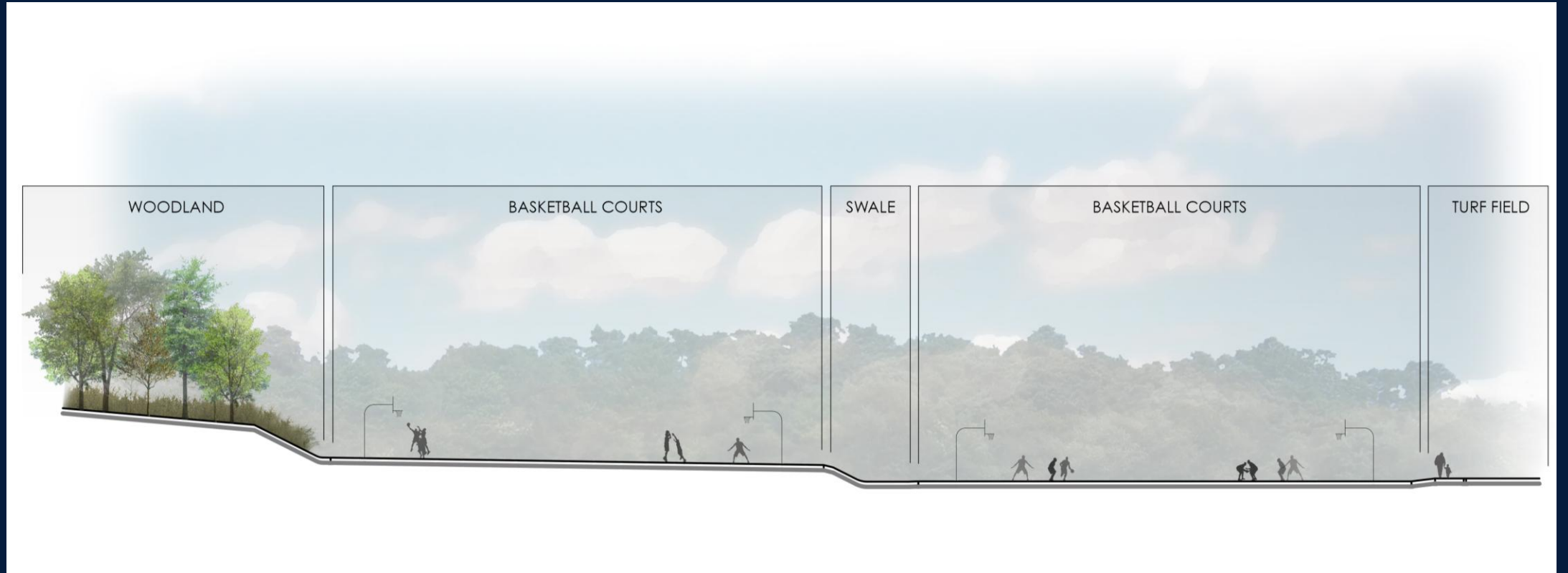
Lovell Playground Site Sections



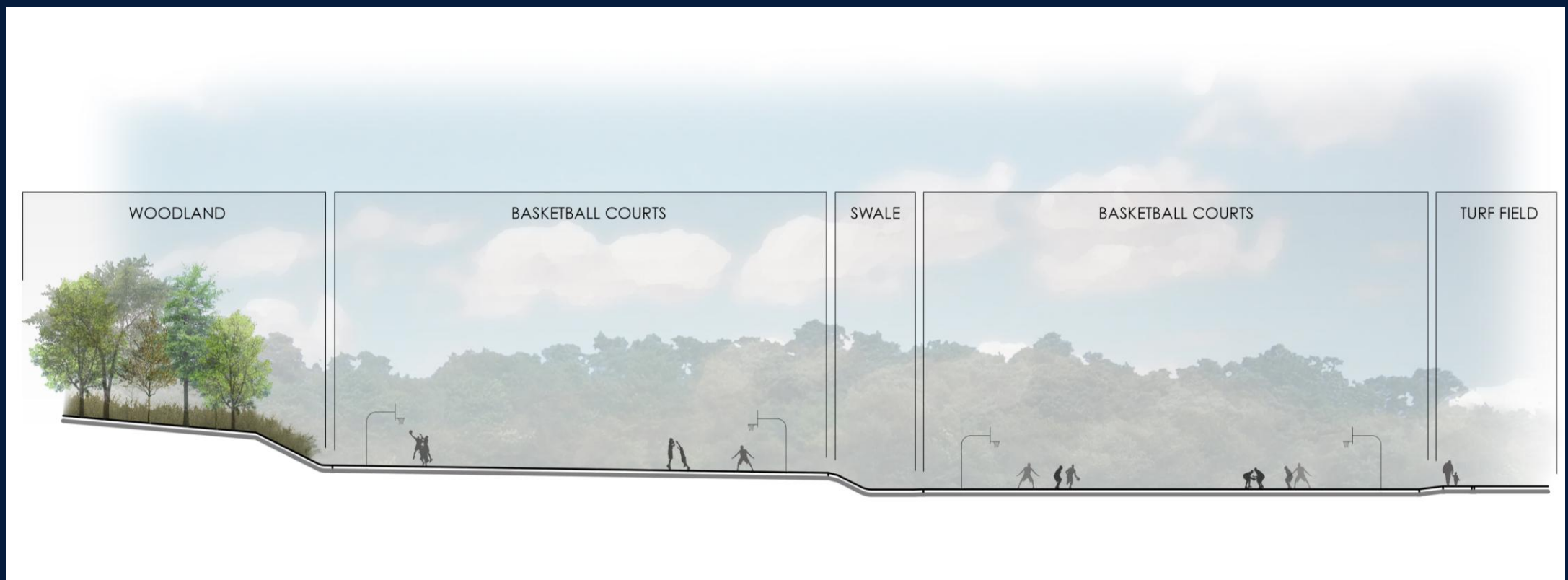
Lovell Playground
Site Sections



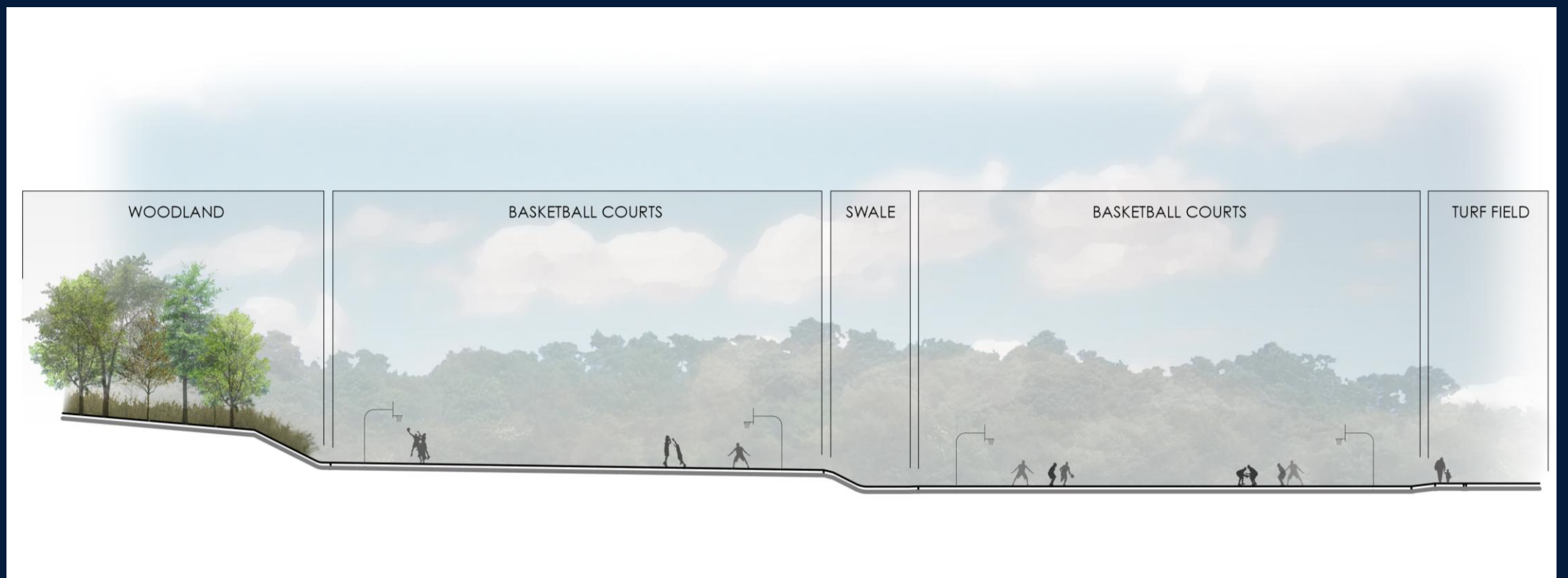
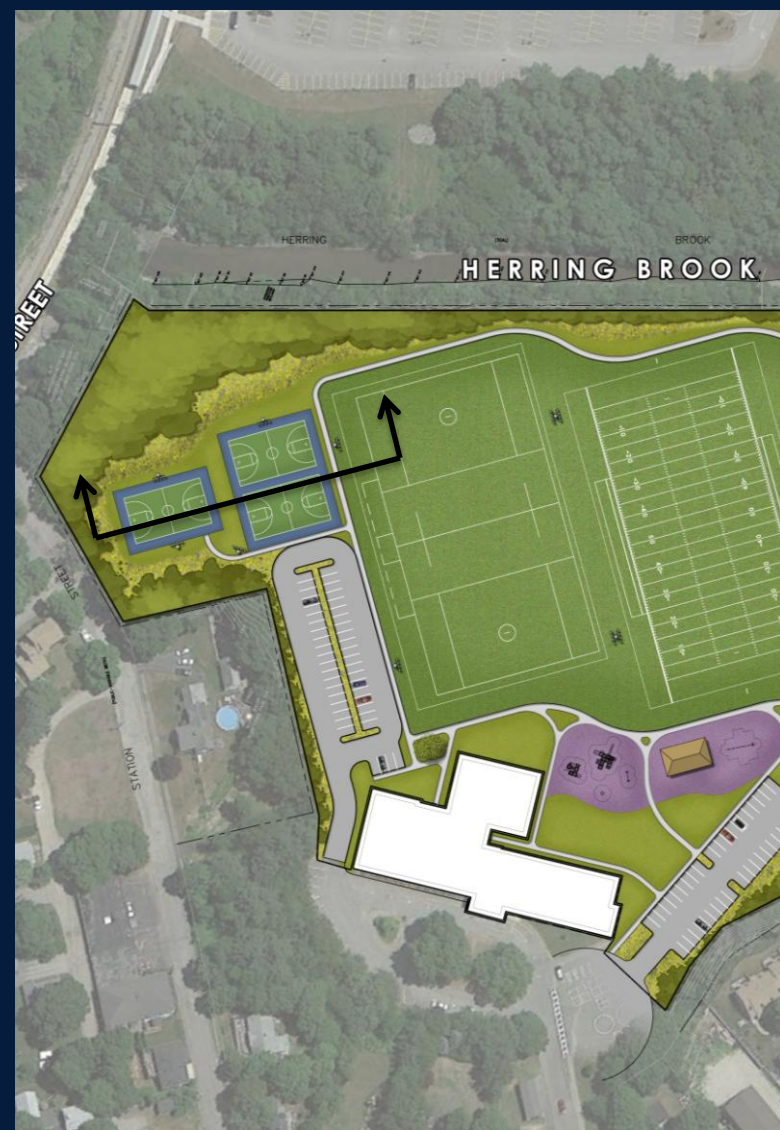
Lovell Playground Site Sections



Lovell Playground Site Sections



Lovell Playground Site Sections



Lovell Playground Site Sections



Lovell Playground Circulation & Connectivity



Lovell Playground



Creating a New Foundation for Active and Passive Recreation in Weymouth

Questions & Public Comments