

**Town of Weymouth
Massachusetts**

Robert L. Hedlund
Mayor

75 Middle Street
Weymouth, MA 02189



www.weymouth.ma.us

Office: 781-340-5012
Fax: 781-335-8184
TTY: 781-331-5124

RECEIVED
 SEP - 6 AM 9:32
 Weymouth
 Town Council

MEMORANDUM

#18 113

TO: TOWN COUNCIL

FROM: MAYOR ROBERT L. HEDLUND *RHD*

RE: TRAFFIC REGULATIONS – PINGREE SCHOOL VICINITY
ASSOCIATED WITH NEW DRIVEWAY ACCESS – EGRESS
PATTERN

DATE: SEPTEMBER 6, 2018

I submit the following measure to Town Council:

“That the Town of Weymouth, through Town Council, pursuant to G.L. Chapter 40, § 22, and the Town of Weymouth Code of Ordinances, Sections 13-102(l) and (aa), and 13-104(a), authorize the erection of signs, signals and markings regulating motor vehicle and pedestrian movements as follows:

Stop		
Street	Intersecting	Direction
Cottage Street	Commercial Street	Eastbound
Pingree School Driveway	Commercial street	Westbound

School Zone, Speed Limit 20 Miles per Hour		
Street	Location	Hours
Commercial Street	Between points 200 feet north of Cottage Street and 350 feet south of Cottage Street.	8:20 AM to 9:20 AM and 2:45 PM to 3:45 PM
Cottage Street	Between Commercial Street and a point 80 feet west of Commercial Street	8:20 AM to 9:20 AM and 2:45 PM to 3:45 PM

Crosswalk	
Street Crossing	Location
Commercial Street	South Side of Pingree School Driveway Intersection

Referral Dte. _____ PH Dte. _____
 Comm. Referral _____ TC Vote _____
 Comm. Vote _____ TC Vote Dte. _____
 Comm. Vote Dte. _____

Restricted Turning Maneuvers			
Location	Direction	Restriction	Time
Commercial Street at Cottage Street	Northbound	Left Turn Prohibited	8:30 AM to 3:45 PM, Monday through Friday, Except Holidays, September 1 through June 30
Pingree School Driveway at Commercial Street	Westbound	Left Turn Prohibited	8:30 AM to 3:45 PM, Monday through Friday, Except Holidays, September 1 through June 30

Do Not Enter			
Street not to be Entered	Direction	Intersecting Street	Times
Pingree School Driveway	Eastbound	Commercial Street	8:30 AM to 9:30 AM and 11:30 AM to 3:45 PM, Monday through Friday, Except Holidays, September 1 through June 30

and cause the above regulations to be listed in the Town of Weymouth Code of Ordinances, Chapter 13, Regulations Affecting Motor Vehicles, Attachment 1 – Appendix A under Schedule II, Restricted Turning Maneuvers, and Schedule IV, Crosswalks, and under new headings, Schedule IX, Stop, Schedule X, School Zone, and Schedule XI, Do Not Enter.”

A report from the Traffic Engineer and the Police Department on this subject will follow.

This measure requires a Legal Notice and Public Hearing.

Measure
18113 Backup

Department of Planning and
Community Development

Robert J. Luongo
Director of Planning and
Community Development
email: rluongo@weymouth.ma.us
781) 340-5015
(781) 335-3283 fax

Town of Weymouth
Massachusetts



Robert L. Hedlund
Mayor

75 Middle Street
Weymouth, MA 02189

www.weymouth.ma.us

MEMORANDUM

TO: Town Council

FROM: Owen MacDonald, Traffic Engineer, Sgt. Brendan Fogarty, WPD

COPY: Ted Langill, Chief of Staff, Bob Luongo, Planning Director

DATE: September 6, 2018

SUBJECT: Traffic Regulations Associated with Pingree School Vicinity New Driveway Access
– Egress Pattern

Purpose: The Massachusetts Department of Transportation (MassDOT) has reconstructed the Commercial Street/ Cottage Street/ Pingree School Driveway Intersections to facilitate safe street crossing by students and parents. Council enactment of certain traffic regulations is required for safe and efficient operations. In addition, the School administration wishes to implement a pattern of vehicular access via the Lovell field entrance on Broad Street, and egress via the driveway on Commercial Street. Restrictions are needed to minimize the chance of school pickup and drop off traffic backing up to the Broad Street Lovell Field entrance.

Recommendations: Enact traffic regulations shown on Contract Drawing Number 14 (copy attached) and stated below:

- Stop Sign regulation on Cottage Street and Pingree School Driveway, both intersecting Commercial Street.
- School Zone – 20 mile per hour speed limit during certain hours on Commercial and Cottage Streets approaching the Pingree School Driveway.
- Crosswalk across Commercial Street at the Pingree School Driveway.

In addition, to implement the School's desired access – egress traffic pattern without impacting Lovell Field access, at certain times:

- Prohibit left turns from Commercial Street northbound to Cottage Street westbound
- Prohibit left turns from the Pingree School Driveway westbound to Commercial Street Southbound.
- Prohibit access to the Pingree School Driveway.

RECEIVED
TOWN OF WEYMOUTH
TOWN CLERKS OFFICE
2018 SEP -7 PM 1:26

RECEIVED

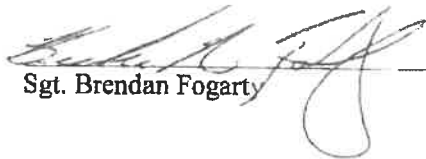
2018 SEP 7 PM 2:12

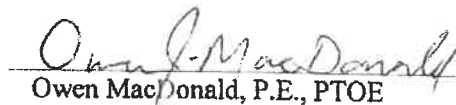
Weymouth
Town Council

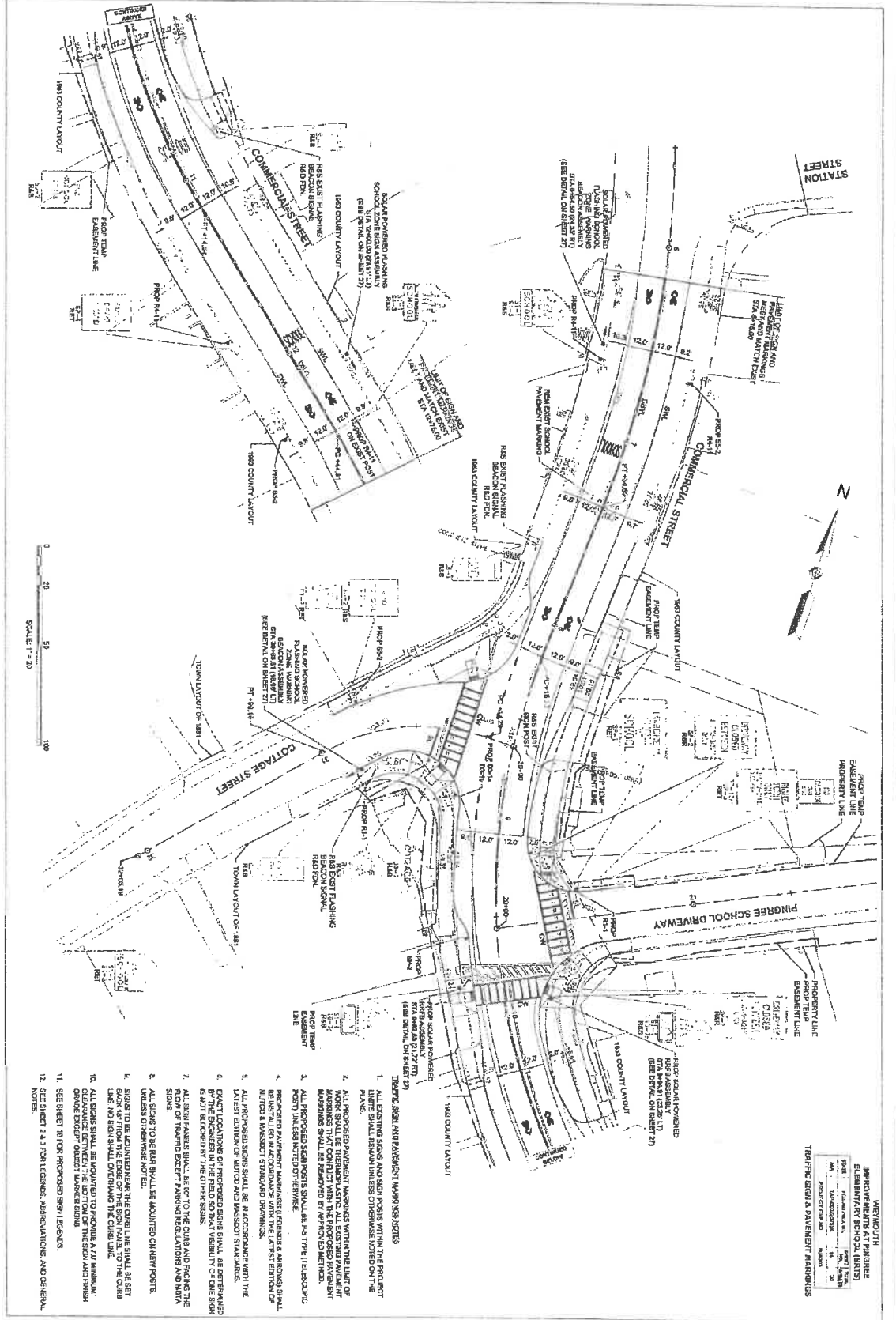
Background:

MassDOT administers the Safe Routes to School program in an effort to encourage more walking and less driving to and from school with a goal of reducing greenhouse gases and improving people's health. A number of years ago, several Weymouth primary schools were evaluated for safe walking potential and parental interest in walking. The Pingree School indicated the greatest parental interest in walking with reasonable safe walking potential, particularly if the crossing distance across Commercial Street could be shortened. The Town applied for and received a Safe Routes project which has resulted in the recently completed sidewalk and traffic control changes.

Coincidentally at the same time, Lovell Field was reconstructed with roadways from Broad Street to the lower end of the Pingree School Driveway. The school administration saw an opportunity to improve the school's access – egress traffic pattern. The proposed regulations build on existing regulations regarding turn restrictions between Commercial Street and the Pingree School Driveway, and add a restriction to keep northbound Commercial Street traffic moving away from the school to minimize the potential for traffic back-ups into Lovell Field, or to Jackson Square.


Sgt. Brendan Fogarty


Owen MacDonald, P.E., PTOE



WEYMOUTH
 JUNIOR HIGH
 ELEMENTARY SCHOOL (SRITS)

PROJECT NO.	608003	DATE	08/25/17
PROJECT NAME	SRITS	SCALE	1" = 20'
PROJECT LOCATION	180 COUNTY LAYOUT	PROJECT NO.	608003
PROJECT NO.	608003	PROJECT NAME	SRITS
PROJECT LOCATION	180 COUNTY LAYOUT	PROJECT NO.	608003
PROJECT NO.	608003	PROJECT NAME	SRITS

TEAR SHEET SIGN & PAVEMENT MARKINGS

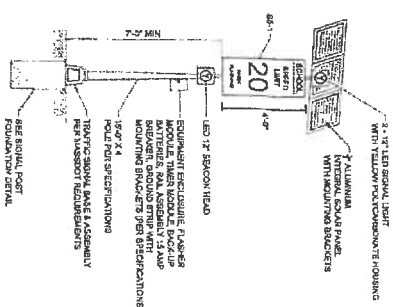
- TRAFFIC SIGN AND PAVEMENT MARKINGS NOTES**
1. ALL EXISTING SIGNS AND SIGN POSTS WITHIN THE PROJECT LIMITS SHALL REMAIN UNLESS OTHERWISE NOTED ON THE DRAWING.
 2. ALL PROPOSED PAVEMENT MARKINGS WITHIN THE LIMITS OF THE PROJECT SHALL BE IN ACCORDANCE WITH THE LATEST EDITION OF THE MICHIGAN MANUAL ON UNIFORM TRAFFIC CONTROL DEVICES (MUTCD) UNLESS OTHERWISE NOTED OTHERWISE.
 3. ALL PROPOSED SIGN POSTS SHALL BE AS TYPE (TYPE/COLOR) NOTED ON THE DRAWING UNLESS OTHERWISE NOTED OTHERWISE.
 4. PROPOSED PAVEMENT MARKINGS (REGULATIONS & MARKINGS) SHALL BE IN ACCORDANCE WITH THE LATEST EDITION OF THE MICHIGAN MANUAL ON UNIFORM TRAFFIC CONTROL DEVICES (MUTCD) UNLESS OTHERWISE NOTED OTHERWISE.
 5. ALL PROPOSED SIGNS SHALL BE IN ACCORDANCE WITH THE LATEST EDITION OF THE MICHIGAN MANUAL ON UNIFORM TRAFFIC CONTROL DEVICES (MUTCD) UNLESS OTHERWISE NOTED OTHERWISE.
 6. PAVEMENT MARKINGS OF PROPOSED SIGNS SHALL BE SETBACKS BY THE DISTANCE AT THE SIGN'S BOTTOM VISIBILITY OF ONE SIGN IS NOT REQUIRED BY THE OTHER SIGN.
 7. ALL SIGN MARKERS SHALL BE SET TO THE CURB AND FACING THE ROW OF TRAFFIC EXCEPT PARKING REGULATIONS AND ARTS SIGNS.
 8. ALL SIGNS TO BE RAIN SHALL BE MOUNTED ON NEW POSTS UNLESS OTHERWISE NOTED.
 9. SIGNS TO BE MOUNTED NEAR THE CURB LINE SHALL BE SET TO THE CURB LINE AND SIGN SHALL OVERLAP THE CURB LINE.
 10. ALL SIGNS SHALL BE MOUNTED TO PROPOSED 4" DIA. SIGN POSTS EXCEPT BETWEEN 180 COUNTY LAYOUT AND PINGREE SCHOOL DRIVEWAY EXCEPT OUTLET MARKER SIGNS.
 11. SEE SHEET 18 FOR PROPOSED SIGN 18 SIGN.
 12. SEE SHEET 2 & 3 FOR LEGEND, ABBREVIATIONS, AND ORIGINAL NOTES.

PROPOSED SIGN SUMMARY

SECTION NUMBER	SIZE OF SIGN	TEXT	TEXT DIMENSIONS (INCHES)	NUMBER OF SIGNS REQUIRED	COLOR	MOUNT AND MOUNTING	UNIT AREA (SQ. FEET)
02-1a (20s)	36" x 12"	Commercial St	60/40	2	GREEN	P-6 1 RECD	EACH
02-1b (20s)	42" x 12"	Stop	60/40	2	GREEN	P-11 MOUNT W/ D-11s	EACH
R1-1	30" x 30"	STOP	30/30	2	RED	P-5 2 RECD	12.50
R4-11	30" x 30"	STOP	30/30	4	WHITE	P-5 3 RECD 1 RECD ON SIGNAL POST	25.00
S1-1	30" x 30"	SCHOOL AHEAD	30/30	4	FLUORESCENT YELLOW	MOUNT ON SIGNAL POST	35.00
S1-1	24" x 48"	SCHOOL AHEAD	24/48	3	WHITE	MOUNT ON SIGNAL POST	24.00
S1-2	24" x 30"	SCHOOL AHEAD	24/30	3	WHITE	MOUNT W/ R-11	15.00
S1-2	12" x 18"	SCHOOL AHEAD	12/18	1	WHITE	P-6 1 RECD	1.50
W1-1/2	24" x 12"	Way	24/12	4	FLUORESCENT GREEN	MOUNT ON SIGNAL POST	8.00

① SEE PLANS FOR SIGN, SIZE, COLOR, MOUNT, AND MOUNTING. SEE SPECIFICATIONS FOR FONT, DIMENSIONS, AND COLOR.

② SEE STRUCTURE DRAWINGS FOR SIGNS AND STRUCTURES, ETC.



SOLAR POWERED FLASHING SCHOOL ZONE WARNING BEACON ASSEMBLY
NOT TO SCALE

NEWMOUTH
IMPROVEMENTS AT PINKBEE
ELEMENTARY SCHOOL (SRTS)
PROJECT NUMBER: 806003
DATE: 8/25/17
DRAWN BY: [Name]
CHECKED BY: [Name]
PROJECT MANAGER: [Name]