

DETAILS - SITE AND PLANTING
SCALE: AS SHOWN

CONSERVATION PERMITTING - PLANT SCHEDULE

RAIN GARDEN DECIDUOUS TREES

QTY	KEY	BOTANICAL NAME	COMMON NAME	SIZE	ROOT	NOTES
5	R-BN	BETULA NIGRA 'HERITAGE'	HERITAGE RIVER BIRCH; MULTISTEM	10'-12' HT.	BALL & BURLAP	20' O.C. (N)
1	R-LT	LIRIODENDRON TULIPIFERA	TULIPTREE	3"- 3.5" CAL.	B&B	30' O.C. (N)
2	R-NS	NYSSA SYLVATICA 'FIRE STARTER'	FIRE STARTER BLACK TUPELO	2"- 2.5" CAL.	B&B	30' O.C. (N)

RAIN GARDEN DECIDUOUS SHRUBS

117	R-CP	COMPTONIA PEREGRINA	SWEETFERN	24"-36" HT.	NEWP #1 POT	3' O.C. (N)
19	R-CS	CORNUS SERICEA	RED-OSIER DOGWOOD	36"-48" HT.	NEWP #1 POT	5' O.C. (N)
25	R-IVF	ILEX VERTICILLATA 'FEMALE'	FEMALE WINTERBERRY	36"-48" HT.	NEWP #1 POT	5' O.C. (N)
2	R-IVM	ILEX VERTICILLATA 'MALE'	MALE WINTERBERRY	36"-48" HT.	NEWP #1 POT	5' O.C. (N)
54	R-IVM	MYRICA GALE	SWEETGALE	24"-36" HT.	NEWP #1 POT	3' O.C. (N)
8	R-PO	PHYSOCARPUS OPULOFOLIUS 'SUMMER WINE'	SUMMER WINE PURPLELEAF NINEBARK	30"-36" HT.	#7 CONT.	5' O.C. (N)
28	R-RA	RHUS AROMATICA 'GRO-LOW'	GRO-LOW FRAGRANT SUMAC	15"-18" HT.	#2 CONT.	4' O.C. (N)
19	R-RV	RHODODENDRON VICOSUM	SWAMP AZALEA	36"-48" HT.	NEWP #1 POT	4' O.C. (N)
375	R-VA	VACCINIUM ANGSTIFOLIUM	LOWBUSH BLUEBERRY	12"-18" HT.	NEWP #1 POT	2' O.C. (N)
59	R-VC	VACCINIUM CORYMBOSUM	HIGHBUSH BLUEBERRY	36"-48" HT.	NEWP #1 POT	3' O.C. (N)

RAIN GARDEN PERENNIALS

125	R-AA	ACORUS AMERICANA	SWEETFLAG	NA	NEWP #2 PLUG	18" O.C. (N)
257	R-EM	EUPATORIUM MACULATUM	SPOTTED JOE PYE WEED	NA	NEWP #2 PLUG	18" O.C. (N)
360	R-IV	IRIS VERSICOLOR	BLUE FLAG	NA	NEWP #2 PLUG	18" O.C. (N)
31	R-LS	LIATRIS SPICATA	MARSH BLAZING STAR	NA	NEWP #2 PLUG	18" O.C. (N)
242	R-SP	SYMPHYOTRICHUM (ASTER) PUNICEUM	SWAMP ASTER	NA	NEWP #2 PLUG	18" O.C. (N)

RAIN GARDEN FERNS

254	R-DP	DENNSTAEDIA PUNCTILOBULA	HAY-SCENT FERN	NA	2 QT. CONT.	18" O.C. (N)
-----	------	--------------------------	----------------	----	-------------	--------------

RAIN GARDEN GRASSES

392	R-JE	JUNCUS EFFUSUS	SOFT RUSH	NA	NEWP #2 PLUG	18" O.C. (N)
28	R-SH	SPOROBOLUS HETEROLEPIS	PRAIRIE DROPSEED	NA	#1 GAL.	24" O.C. (N)
13	R-SN	SORGHASTRUM NUTANS	INDIAN GRASS	NA	#2 GAL.	24" O.C. (N)
65	R-SZ	SCHIZACHYRIUM 'TWILIGHT ZONE'	TWILIGHT LITTLE BLUESTEM	NA	#2 GAL.	36" O.C. (N)

RAIN GARDEN AND SITE NATIVE RESTORATION GRASS SEED MIXES

11,939 SF	NEW ENGLAND EROSION CONTROL RESTORATION MIX - MOIST SITES	NE WETLAND PLANTS, INC., MA; 413.548.8000
	MIX INCLUDES: RIVERBANK WILD RYE, LITTLE BLUESTEM, RED FESCUE, BIG BLUESTEM, SWITCH GRASS, NEW YORK IRONWEED, UPLAND BENTGRASS, BEGGAR TICKS, SPOTTED JOE PYE WEED, BONESET, NEW ENGLAND ASTER, WOOL GRASS, SOFT RUSH (2020 MIX)	APPLICATION RATE 35 LBS/ ACRE (N)
23,534 SF	NEW ENGLAND CONSERVATION WLDIFE SEED MIX	NE WETLAND PLANTS, INC., MA; 413.548.8000
	MIX INCLUDES: VIRGINIA WILD RYE, LITTLE BLUESTEM, BIG BLUESTEM, RED FESCUE, INDIAN GRASS, SWITCH GRASS, PARTRIDGE PEA, SHOWY TICK TREFOLI, BUTTERFLY MILKWEED, BEGGAR TICKS, PURPLE JOE PYE WEED, BLACK EYED SUSAN, HEATH (OR HAIRY) ASTER, EARLY GOLDEN ROD (2020 MIX)	APPLICATION RATE 25 LBS/ ACRE (N)

O.C. = ON-CENTER SPACING
(N) = NATIVE SPECIES
NEWP = NEW ENGLAND WETLAND PLANT SIZES

SITE PERMITTING - PLANT SCHEDULE

DECIDUOUS TREES

QTY	KEY	BOTANICAL NAME	COMMON NAME	SIZE	ROOT	NOTES
1	AC	AMELANCHIER CANADENSIS	SERVICEBERRY	6"-7" HT.	BALL & BURLAP	30' O.C. (N)
8	AR	ACER RUBRUM 'RED SUNSET'	RED SUNSET RED MAPLE	2"- 2.5" CAL.	B&B	30' O.C. (N)
2	ARR	ACER RUBRUM 'REDPOINTE'	REDPOINTE RED MAPLE	2"- 2.5" CAL.	B&B	30' O.C. (N)
12	BN	BETULA NIGRA 'HERITAGE'	HERITAGE RIVER BIRCH; MULTISTEM	10'-12' HT.	B&B	20' O.C. (N)
16	GT	GLEDITSIA TRIA. 'INERMIS' 'HALKA'	HALKA HONEYLOCUST	2"- 2.5" CAL.	B&B	30' O.C. (N)
4	MV	MAGNOLIA VIRGINIANA	SWEETBAY MAGNOLIA; MULTISTEM	7"-8" HT.	B&B	15' O.C. (N)
11	NS	NYSSA SYLVATICA	BLACK TUPELO	2"- 2.5" CAL.	B&B	30' O.C. (N)
4	QB	QUERCUS BICOLOR	SWAMP WHITE OAK	2"- 2.5" CAL.	B&B	30' O.C. (N)

DECIDUOUS SHRUBS

37	CAH	CLETHRA ALNIFOLIA 'HUMMINGBIRD'	HUMMINGBIRD SUMMERSWEET	24"-30" HT.	#5 CONT.	4' O.C. (N)
100	CP	COMPTONIA PEREGRINA	SWEETFERN	24"-30" HT.	2 QT. CONT.	3' O.C. (N)
207	CS	CORNUS SERICEA 'ARCTIC FIRE'	ARCTIC FIRE RED OSIER DOGWOOD	18"-24" HT.	#3 CONT.	5' O.C. (N)
56	FG	FOTHERGILLA GARDENII	DWARF FOTHERGILLA	18"-24" HT.	#3 CONT.	4' O.C. (N)
24	HQ	HYDRANGEA QUERCIFOLIA 'SNOW QUEEN'	SNOW QUEEN OAKLEAF HYDRANGEA	24"-30" HT.	#7 CONT.	4' O.C. (N)
39	HQP	HYDRANGEA QUERCIFOLIA 'PEE WEE'	PEE WEE OAKLEAF HYDRANGEA	24"-30" HT.	#5 CONT.	3' O.C. (N)
7	HV	HAMAMELIS VIRGINIANA	COMMON WITCHHAZEL	4'-5' HT.	B&B	8' O.C. (N)
12	IVH	ITEA VIRGINICA 'HENRY'S GARNET'	HENRY'S GARNET SWEETSPIRE	24"-30" HT.	#5 CONT.	3' O.C. (N)
4	IVS	ITEA VIRGINICA 'SPIRICH'	LITTLE HENRY SWEETSPIRE	18"-24" HT.	#3 CONT.	3' O.C. (N)
23	IVF	ILEX VERTICILLATA 'FEMALE'	FEMALE WINTERBERRY	36"-48" HT.	NEWP #1 POT	5' O.C. (N)
3	IVM	ILEX VERTICILLATA 'MALE'	MALE WINTERBERRY	36"-48" HT.	NEWP #1 POT	5' O.C. (N)
25	MG	MYRICA GALE	SWEETGALE	24"-36" HT.	NEWP #1 POT	3' O.C. (N)
109	PO	PHYSOCARPUS OPULOFOLIUS 'SUMMER WINE'	SUMMER WINE PURPLELEAF NINEBARK	30"-36" HT.	#7 CONT.	5' O.C. (N)
104	RA	RHUS AROMATICA 'GRO-LOW'	GRO-LOW FRAGRANT SUMAC	18"-24" HT.	#3 CONT.	4' O.C. (N)
25	VA	VACCINIUM ANGSTIFOLIUM 'BURGUNDY'	BURGUNDY LOWBUSH BLUEBERRY	15"-18" HT.	#2 CONT.	2' O.C. (N)
101	VDC	VIBURNUM DENTATUM 'CHRISTOM'	BLUE MUFFIN ARROWWOOD VIBURNUM	18"-24" HT.	#3 CONT.	5' O.C. (N)
75	XS	XANTHORHIZA SIMPLICISSIMA	YELLOWROOT	18"-24" HT.	2 QT. CONT.	3' O.C. (N)

EVERGREEN SHRUBS

12	IG	ILEX GLABRA 'COMPACTA'	COMPACT INKBERRY	24"-30" HT.	#5 CONT.	4' O.C. (N)
151	JH	JUNIPERUS HORIZONTALIS 'BAR HARBOR'	BAR HARBOR JUNIPER	15"-18" SP.	#2 CONT.	3' O.C. (N)
19	LF	LEUCOTHOE FONTANESIANA 'ZEBLID'	SCARLETTA DROOPING LEUCOTHOE	18"-24" SP.	#3 CONT.	3' O.C. (N)

PERENNIALS

25	AO	ASTER OBLONGIFOLIUS 'OCTOBER SKIES'	OCTOBER SKIES AROMATIC ASTER	NA	#1 GAL.	18" O.C. (N)
25	AT	ASCLEPIAS TUBEROSA	BUTTERFLY WEED	NA	#1 GAL.	24" O.C. (N)
25	IC	IRIS CRISTATA	DWARF CRESTED IRIS	NA	1 QT. CONT.	12" O.C. (N)
25	LSF	LIATRIS SPICATA 'FLORISTAN WHITE'	WHITE FLORISTAN WEISS GAYFEATHER	NA	1 GAL.	18" O.C. (N)
25	LSK	LIATRIS SPICATA 'KOBOLD ORIGINAL'	PURPLE KOBOLD ORIGINAL GAYFEATHER	NA	1 GAL.	12" O.C. (N)
25	PV	POLYGONATUM ODORATUM 'VARIEGATUM'	VARIEGATED SOLOMON'S SEAL	NA	1 QT. CONT.	12" O.C. (N)
167	RZ	RUDBECKIA FULGIDA VAR. 'GOLDSTURM'	GOLDSTURM BLACKEYED SUSAN	NA	#1 GAL.	24" O.C. (N)

FERNS

25	AF	ATHYRIUM FILIX-FEMINA	LADY FERN	NA	2 QT. CONT.	18" O.C. (N)
25	DP	DENNSTAEDIA PUNCTILOBULA	HAY-SCENT FERN	NA	2 QT. CONT.	18" O.C. (N)

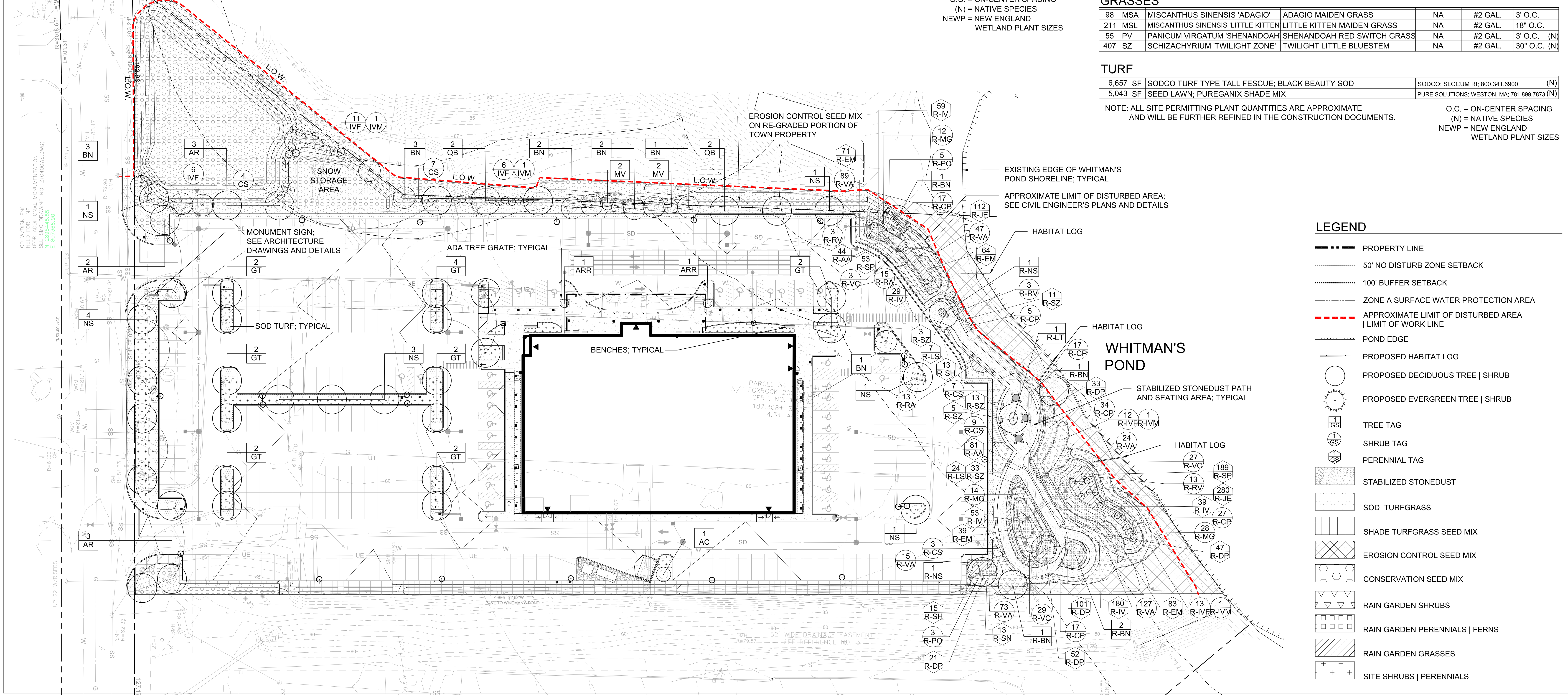
GRASSES

98	MSA	MISCANTHUS SINENSIS 'ADAGIO'	ADAGIO MAIDEN GRASS	NA	#2 GAL.	3' O.C.
211	MSL	MISCANTHUS SINENSIS 'LITTLE KITTEN'	LITTLE KITTEN MAIDEN GRASS	NA	#2 GAL.	18" O.C.
55	PV	PANICUM VIRGATUM 'SHENANDOAH'	SHENANDOAH RED SWITCH GRASS	NA	#2 GAL.	3' O.C. (N)
407	SZ	SCHIZACHYRIUM 'TWILIGHT ZONE'	TWILIGHT LITTLE BLUESTEM	NA	#2 GAL.	30" O.C. (N)

TURF

6,657 SF	SODCO TURF TYPE TALL FESCUE; BLACK BEAUTY SOD	SODCO; SLOCUM RI; 800.341.6900	(N)
5,043 SF	SEED LAWN; PUREGANIX SHADE MIX	PURE SOLUTIONS; WESTON, MA; 781.899.7873	(N)

NOTE: ALL SITE PERMITTING PLANT QUANTITIES ARE APPROXIMATE AND WILL BE FURTHER REFINED IN THE CONSTRUCTION DOCUMENTS.
O.C. = ON-CENTER SPACING
(N) = NATIVE SPECIES
NEWP = NEW ENGLAND WETLAND PLANT SIZES



LEGEND

- PROPERTY LINE
- 50' NO DISTURB ZONE SETBACK
- 100' BUFFER SETBACK
- ZONE A SURFACE WATER PROTECTION AREA
- APPROXIMATE LIMIT OF DISTURBED AREA | LIMIT OF WORK LINE
- POND EDGE
- PROPOSED HABITAT LOG
- PROPOSED DECIDUOUS TREE | SHRUB
- PROPOSED EVERGREEN TREE | SHRUB
- TREE TAG
- SHRUB TAG
- PERENNIAL TAG
- STABILIZED STONEDUST
- SOD TURFGRASS
- SHADE TURFGRASS SEED MIX
- EROSION CONTROL SEED MIX
- CONSERVATION SEED MIX
- RAIN GARDEN SHRUBS
- RAIN GARDEN PERENNIALS | FERNS
- RAIN GARDEN GRASSES
- SITE SHRUBS | PERENNIALS

DEVELOPER:
FOXROCK 200 LIBBEY, LLC
1200 Hancock Street, Suite 301
Quincy, MA 02169

Civil Engineer
Tetra Tech Inc.
20 Cabot Boulevard, Suite 305
Mansfield, MA 02048
Tel 508-766-2200
www.tetratech.com

Landscape Architect
Terraink Landscape Architecture
7 Central Street, Suite 150
Arlington, MA 02476
Tel 781-316-1595
www.terraink.com

Architect
Isgerinty LLC
500 Harrison Avenue, Suite 5F
Boston, MA 02118
Tel 617-419-4660
www.isgerinty.com

MEP/FP Engineer
R.W. Sullivan Engineering
The Schrafft Center
529 Main Street, Suite 203
Boston, MA 02129
Tel 617-523-8227
Fax 617-523-8016

Structural Engineer
McManara + Salvia
101 Federal Street, Suite 1100
Boston, MA 02110
Tel 617-737-0040
www.mcsal.com

MASSACHUSETTS LANDSCAPE ARCHITECT
No. 1114

Issuance Schedule

Number	Date	Description
1	2/11/21	SUBMIT TO BZA
2	3/8/21	REVISED PER CONSERVATION / DPW COMMENTS

PROGRAMMING NOT FOR CONSTRUCTION

PERMITTING PLANTING

FoxRock 200 Libbey, LLC

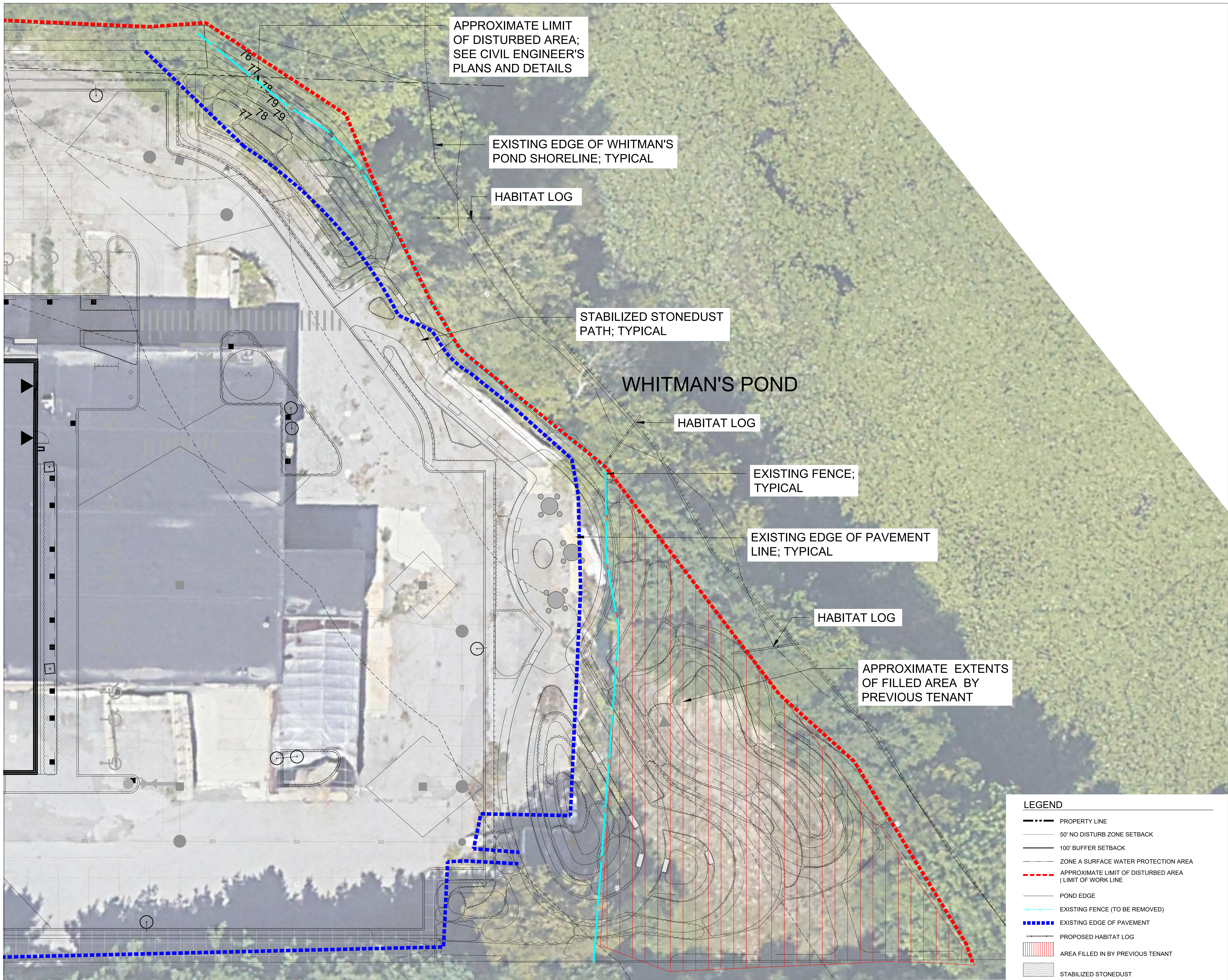
Medical Office Building
200 Libbey Industrial Parkway
Weymouth, MA

1" = 30'-0"

Scale: Date Issued: February 3, 2021

L-1

Project Number: 143-42892-20004



APPROXIMATE LIMIT OF DISTURBED AREA; SEE CIVIL ENGINEER'S PLANS AND DETAILS

EXISTING EDGE OF WHITMAN'S POND SHORELINE; TYPICAL

HABITAT LOG

STABILIZED STONEDUST PATH; TYPICAL

WHITMAN'S POND

HABITAT LOG

EXISTING FENCE; TYPICAL

EXISTING EDGE OF PAVEMENT LINE; TYPICAL

HABITAT LOG

APPROXIMATE EXTENTS OF FILLED AREA BY PREVIOUS TENANT

LEGEND

- PROPERTY LINE
- 50' NO DISTURB ZONE SETBACK
- 100' BUFFER SETBACK
- ZONE A SURFACE WATER PROTECTION AREA
- - - - - APPROXIMATE LIMIT OF DISTURBED AREA | LIMIT OF WORK LINE
- POND EDGE
- - - - - EXISTING FENCE (TO BE REMOVED)
- EXISTING EDGE OF PAVEMENT
- PROPOSED HABITAT LOG
- ||||| AREA FILLED IN BY PREVIOUS TENANT
- STABILIZED STONEDUST

DEVELOPER:
FOXROCK 200 LIBBEY, LLC
1200 Hancock Street, Suite 301
Quincy, MA 02169



Civil Engineer

Tetra Tech INC
20 Cabot Boulevard, Suite 305
Mansfield, MA 02048
Tel 508-786-2200
www.tetrattech.com



Landscape Architect

Terraink Landscape Architecture
7 Central Street, Suite 150
Arlington, MA 02476
Tel 781 316 1595
www.terraink.com



Architect

Isgenuity LLC
500 Harrison Avenue, Suite 5F
Boston, MA 02118
Tel 617 419 4690
www.isgeny.com



MEP/FP Engineer

R.W. Sullivan Engineering
The Schraff Center
529 Main Street, Suite 203
Boston, MA 02129
Tel 617 523 8227
Fax 617 523 8016

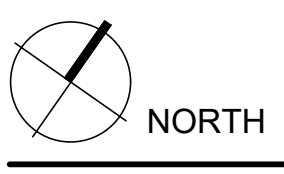
Structural Engineer

McNamara - Salvia
101 Federal Street, Suite 1100
Boston, MA 02110
Tel 617 737 0040
www.mcsal.com



Issuance Schedule

Number	Date	Description
1	2/11/21	SUBMIT TO BZA
2	3/8/21	REVISED PER CONSERVATION / DPW COMMENTS



PROGRAMMING
NOT FOR CONSTRUCTION

PERMITTING ENLARGEMENT

FoxRock 200 Libbey, LLC
Medical Office Building
200 Libbey Industrial Parkway
Weymouth, MA

Scale: 1" = 10'-0" Date Issued: February 3, 2021



PERSPECTIVE
SCALE: NOT TO SCALE



RENDERING
SCALE: NOT TO SCALE

DEVELOPER:
FOXROCK 200 LIBBEY, LLC
1200 Hancock Street, Suite 301
Quincy, MA 02169



Civil Engineer
Tetra Tech, INC.
20 Cabot Boulevard, Suite 305
Mansfield, MA 02048
Tel 508-786-2200
www.tetrattech.com



Landscape Architect
Terraink Landscape Architecture
7 Central Street, Suite 150
Arlington, MA 02476
Tel 781 316 1595
www.terraink.com



Architect
Isgenuity LLC
500 Harrison Avenue, Suite 5F
Boston, MA 02118
Tel 617 419 4660
www.isgenuity.com



MEP/FP Engineer
R.W. Sullivan Engineering
The Schraft Center
529 Main Street, Suite 203
Boston, MA 02129
Tel 617 523 8227
Fax 617 523 8016

Structural Engineer
McNamara + Salvia
101 Federal Street, Suite 1100
Boston, MA 02110
Tel 617 737 0040
www.mcsal.com



Issuance Schedule		
Number	Date	Description
1	2/11/21	SUBMIT TO BZA
2	3/8/21	REVISED PER CONSERVATION / DPW COMMENTS



PROGRAMMING
NOT FOR CONSTRUCTION

PERMITTING
ILLUSTRATIVES

FoxRock 200 Libbey, LLC
Medical Office Building
200 Libbey Industrial Parkway
Weymouth, MA

Scale: AS SHOWN Date Issued: February 3, 2021