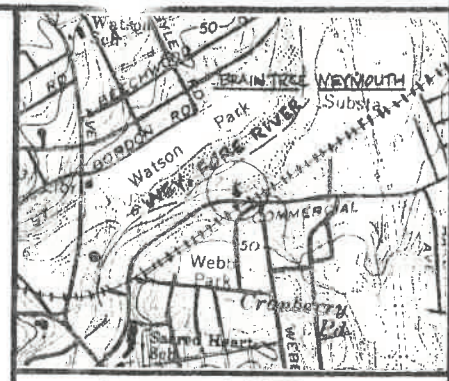
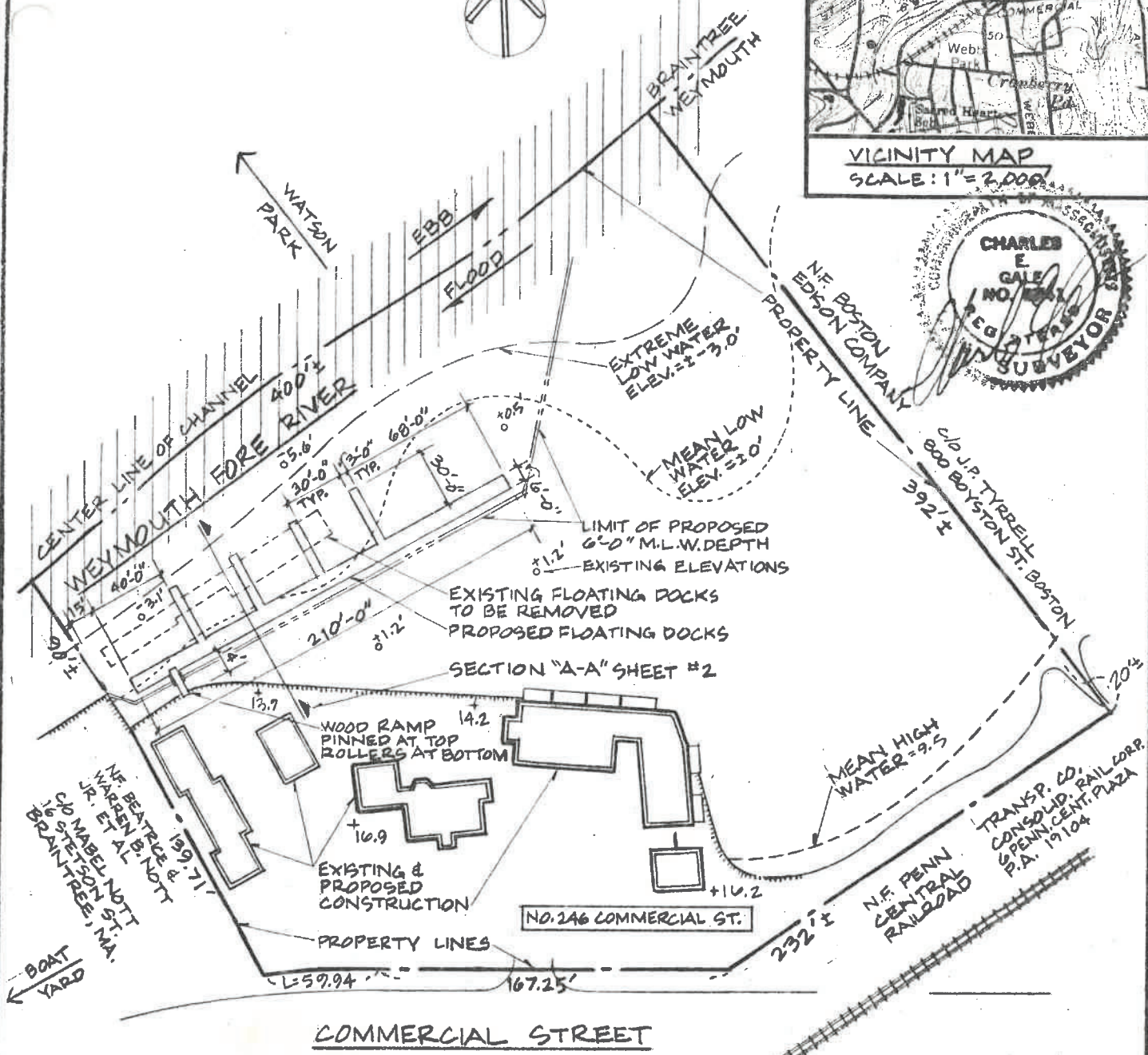


BRAINTREE RIVER BANK



VICINITY MAP  
SCALE: 1" = 2,000'



DATUM = MEAN LOW WATER  
 SCALE: 1" = 80'-0"

SITE INFORMATION TAKEN FROM SURVEY  
 PREPARED BY GALE ENGINEERING CO., INC. DATED 1/30/81

PLANS ACCOMPANYING PETITION OF  
**RICHARD S. THAYER**  
 TO CONSTRUCT AND MAINTAIN  
 FLOATING DOCKS AND DREDGE  
 AS INDICATED IN THE WEYMOUTH  
 FORE RIVER, TOWN OF WEYMOUTH,  
 COUNTY OF NORFOLK, MASS.  
 SHEET 1 OF 2-B

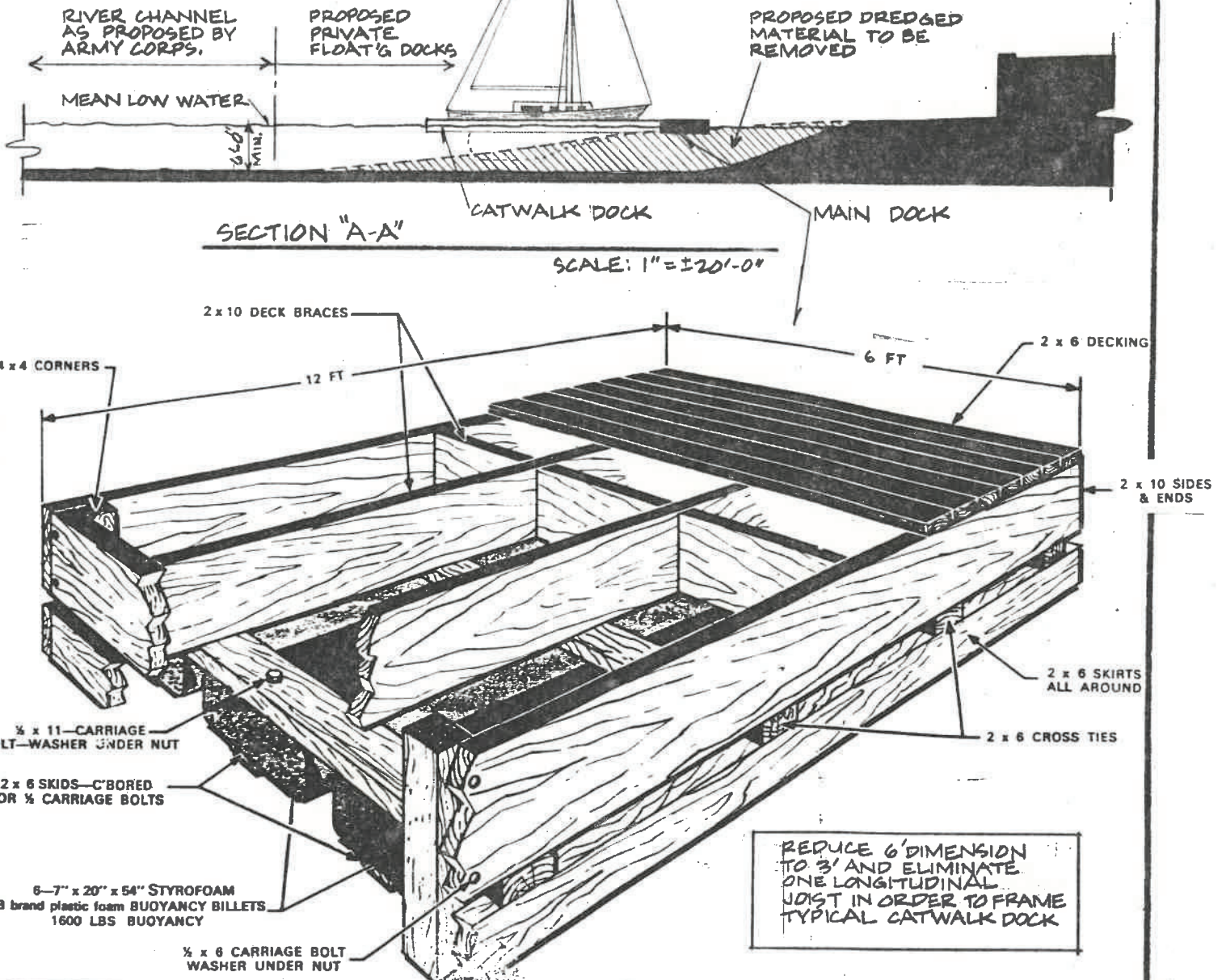
I HEREBY CERTIFY THAT THIS  
 PLAN CONFORMS TO THE  
 RULES & REGULATIONS OF  
 THE REGISTERS OF DEEDS  
 WITH THE EXCEPTION OF  
 LETTER SIZE.



**PROPOSED DREDGING:** The estimated quantity of dredged material is 1,580 cu. yds. This quantity is based on a Project depth of 6 feet mean low water plus a 1-foot overdepth. Floating Docks will be bottom anchored.

**DREDGED MATERIAL EVALUATION:** Samples of bottom material indicate recently deposited sand and silt with a small amount of organic matter present. This material is easily removed with a clamshell bucket dredge. Previous surveys show deeper water in the area, indicating recent deposition.

**DREDGING REQUIREMENTS:** The dredging will be performed by a clamshell bucket dredge. It is our intention to coordinate aforementioned work with that which is scheduled by the Army Corps of Eng. for the River Channel. It is also our intention to coordinate our activity so as to dispose of the dredged material in the same manner as the Army Corps of Eng. Project.



**TYPICAL FLOATING DOCK CONSTRUCTION**

PLANS ACCOMPANYING PETITION OF RICHARD S. THAYER

WORK PERTAINING TO FLOATING DOCK CONSTRUCTION