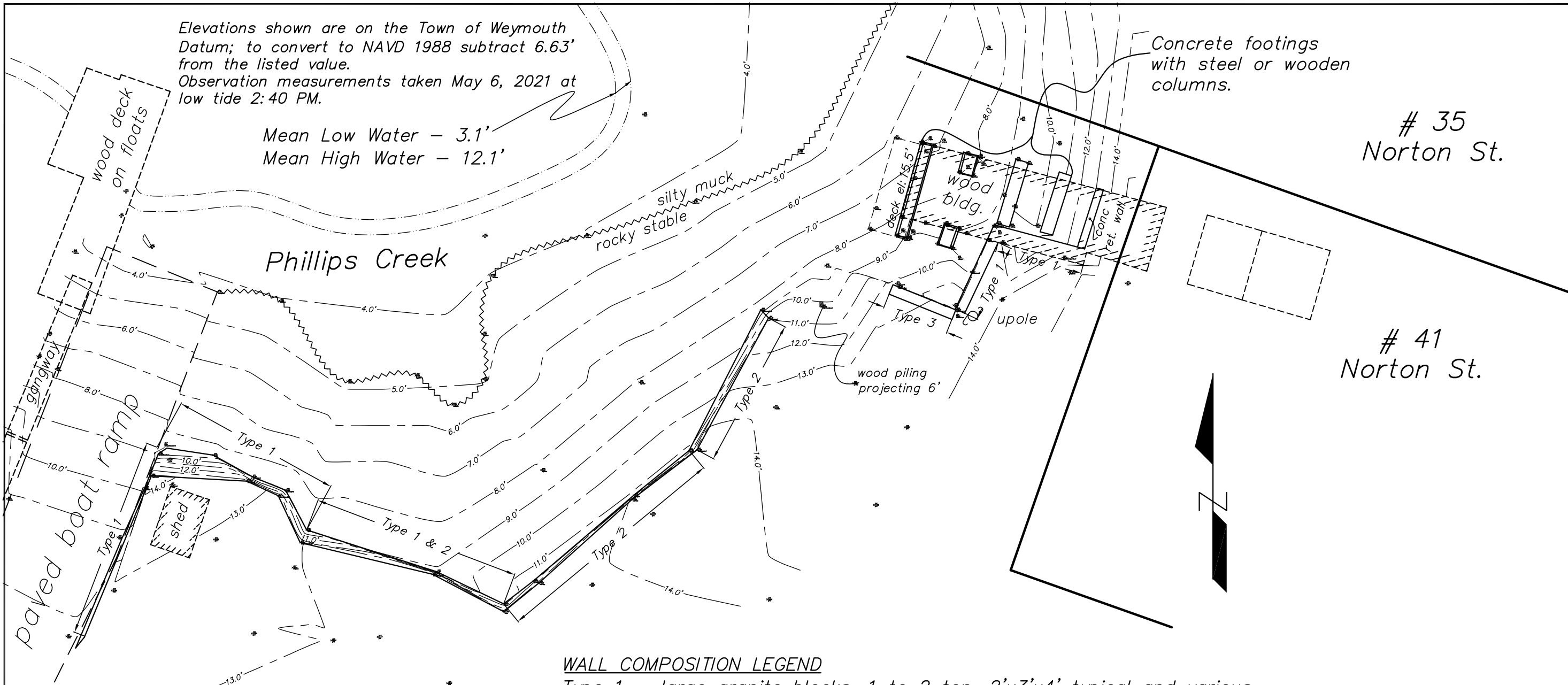


Elevations shown are on the Town of Weymouth Datum; to convert to NAVD 1988 subtract 6.63' from the listed value.  
 Observation measurements taken May 6, 2021 at low tide 2:40 PM.

Mean Low Water - 3.1'  
 Mean High Water - 12.1'

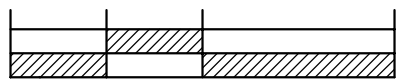


# 67  
 Norton St.  
 (aka Berts Boat Yard)

WALL COMPOSITION LEGEND

- Type 1 - large granite blocks, 1 to 2 ton, 2'x3'x4' typical and various others, dry stacked
- Type 2 - one foot square reinforced concrete long sections, some granite, 8' to 14' lengths (former pilings).
- Type 3 - granite block rubble, not stacked evenly

0' 10' 20' 40'



scale: 1 in. = 20 ft.

Peter R McManus PLS

Existing Conditions Site Plan  
 at # 67 Norton Street  
 in the Town of Weymouth  
 prepared for:  
 Norton Street Trust

TERRA NOVA SURVEY CONSULTANTS  
 1685 South Street  
 Bridgewater, MA 02324  
 Date: May 6, 2021  
 Scale: 1 in. = 20 ft.