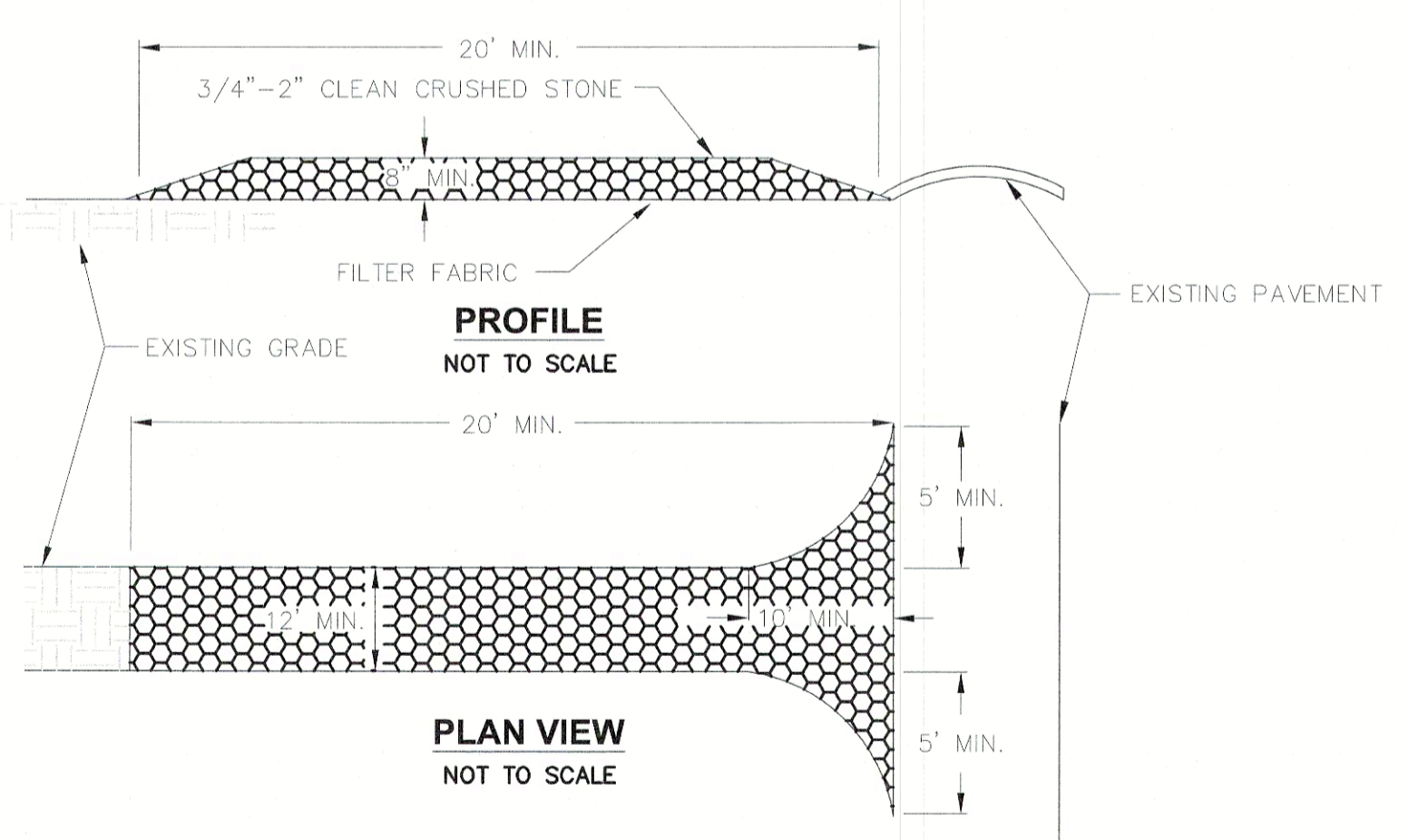


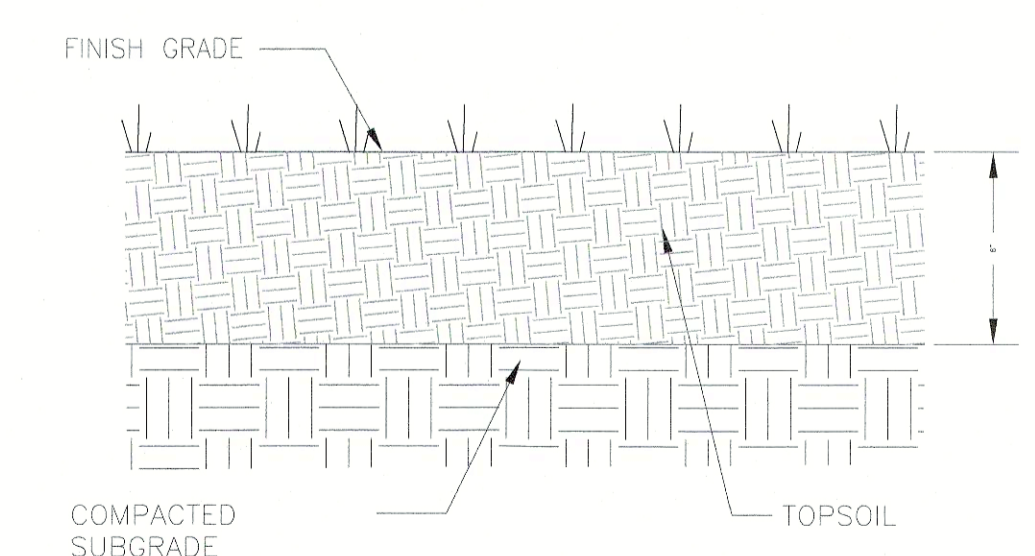
- NOTES:**
1. EXCAVATE A 6"x6" TRENCH ALONG THE LINE OF EROSION CONTROL OF THE SITE.
 2. UNROLL SILTATION FENCE AND POSITION THE POSTS AGAINST THE BACK (DOWNSTREAM) WALL OF THE TRENCH (NET SIDE AWAY FROM FLOW DIRECTION).
 3. DRIVE THE POST INTO THE GROUND UNTIL THE NETTING IS LAYING ACROSS THE TRENCH BOTTOM.
 4. LAY THE TOE-IN FLAP OF THE FABRIC ONTO THE UNDISTURBED BOTTOM OF THE TRENCH, BACKFILL THE TRENCH AND TAMP THE SOIL. TOE-IN CAN ALSO BE ACCOMPLISHED BY LAYING FABRIC FLAP ON UNDISTURBED GROUND AND PILING & TAMP-ING FILL AT THE BASE.

SILTATION FENCE DETAIL
N.T.S.



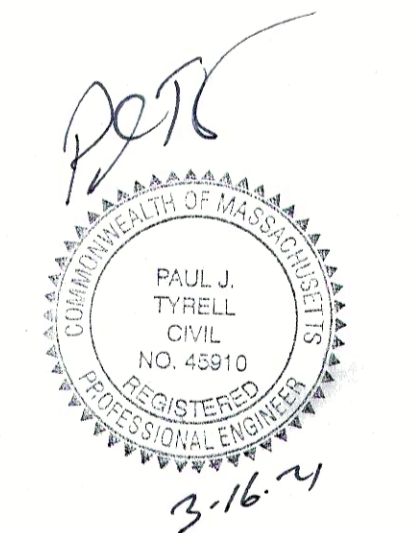
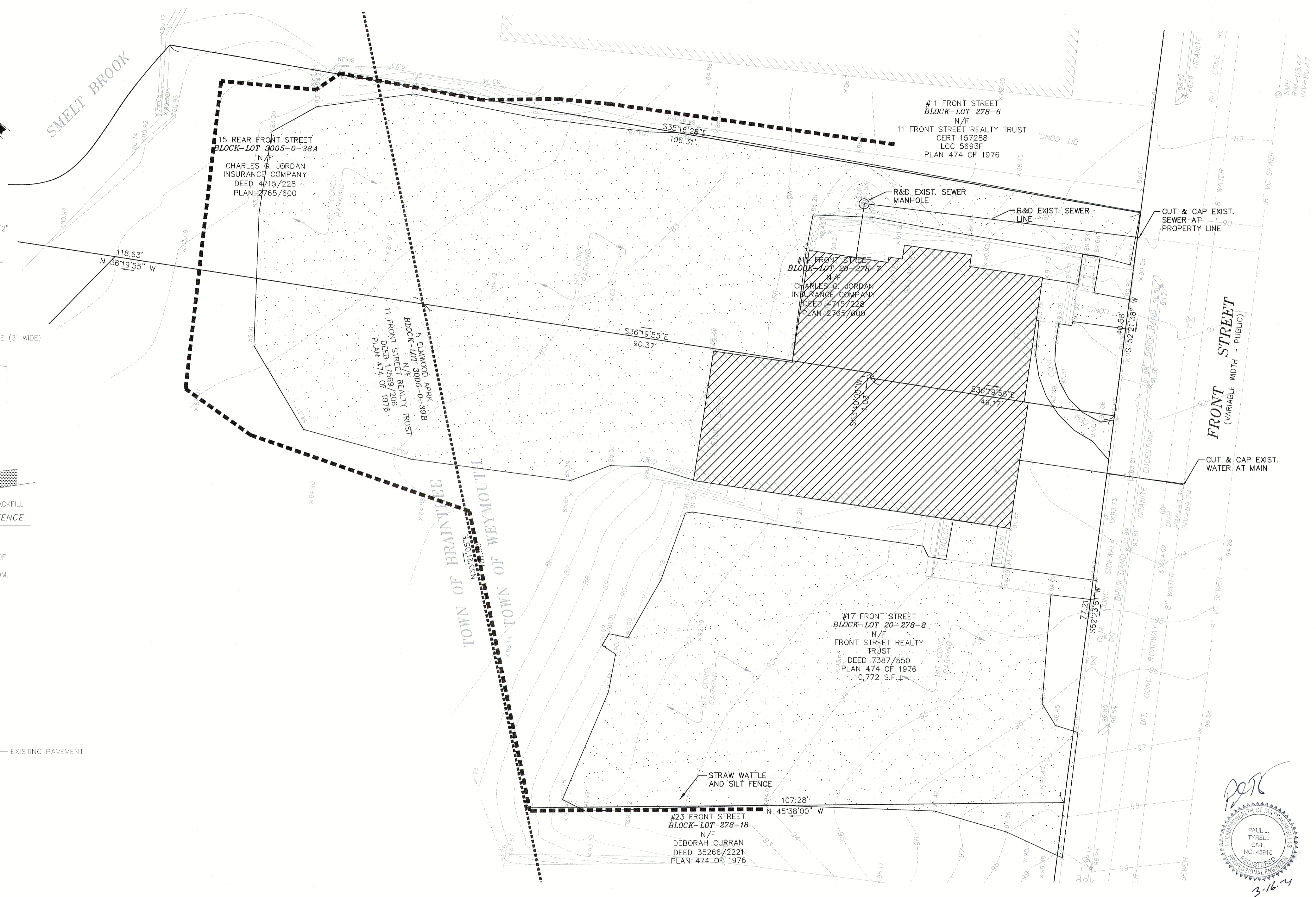
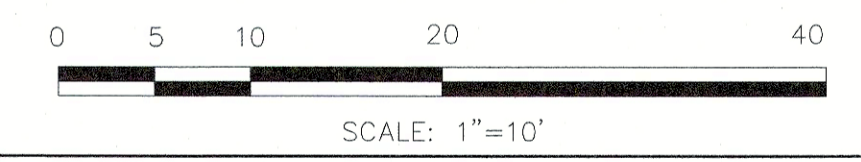
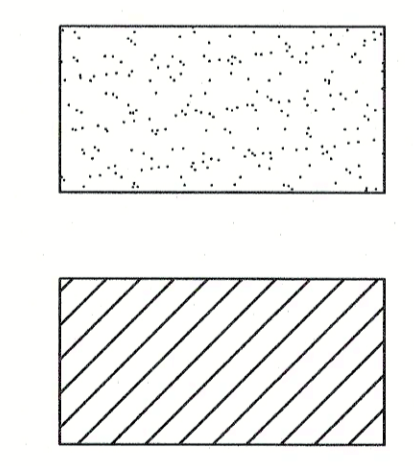
- NOTES:**
1. STONE SIZE - USE 3/4"-2" CLEAN WASHED STONE.
 2. LENGTH - NOT LESS THAN 40 FEET.
 3. THICKNESS - NOT LESS THAN (8) INCHES.
 4. WIDTH - TWELVE (12) MINIMUM, BUT NOT LESS THAN THE FULL WIDTH AT POINTS WHERE INGRESS OR EGRESS OCCURS. TWENTY-FOUR (24) FOOT IF SINGLE ENTRANCE TO SITE.
 5. FILTER CLOTH - WILL BE PLACED OVER THE ENTIRE AREA PRIOR TO PLACING OF STONE.
 6. SURFACE WATER - ALL SURFACE WATER FLOWING OR DIVERTED TOWARD CONSTRUCTION ENTRANCES SHALL BE PIPED ACROSS THE ENTRANCE. IF PIPING IS IMPRACTICAL, A MOUNTABLE BERM WITH 5:1 SLOPES WILL BE PERMITTED.
 7. MAINTENANCE - THE ENTRANCE SHALL BE MAINTAINED IN A CONDITION WHICH WILL PREVENT TRACKING OR FLOWING OF SEDIMENT ONTO PUBLIC RIGHTS-OF-WAY. ALL SEDIMENT SPILLED, DROPPED, WASHED OR TRACKED ONTO PUBLIC RIGHTS-OF-WAY MUST BE REMOVED IMMEDIATELY.
 8. WHEN WASHING IS REQUIRED, IT SHALL BE DONE ON AN AREA STABILIZED WITH STONE AND WHICH DRAINS INTO AN APPROVED SEDIMENT TRAPPING DEVICE.
 9. PERIODIC INSPECTION AND NEEDED MAINTENANCE SHALL BE PROVIDED AFTER EACH RAIN.

STABILIZED CONSTRUCTION ENTRANCE
N.T.S.

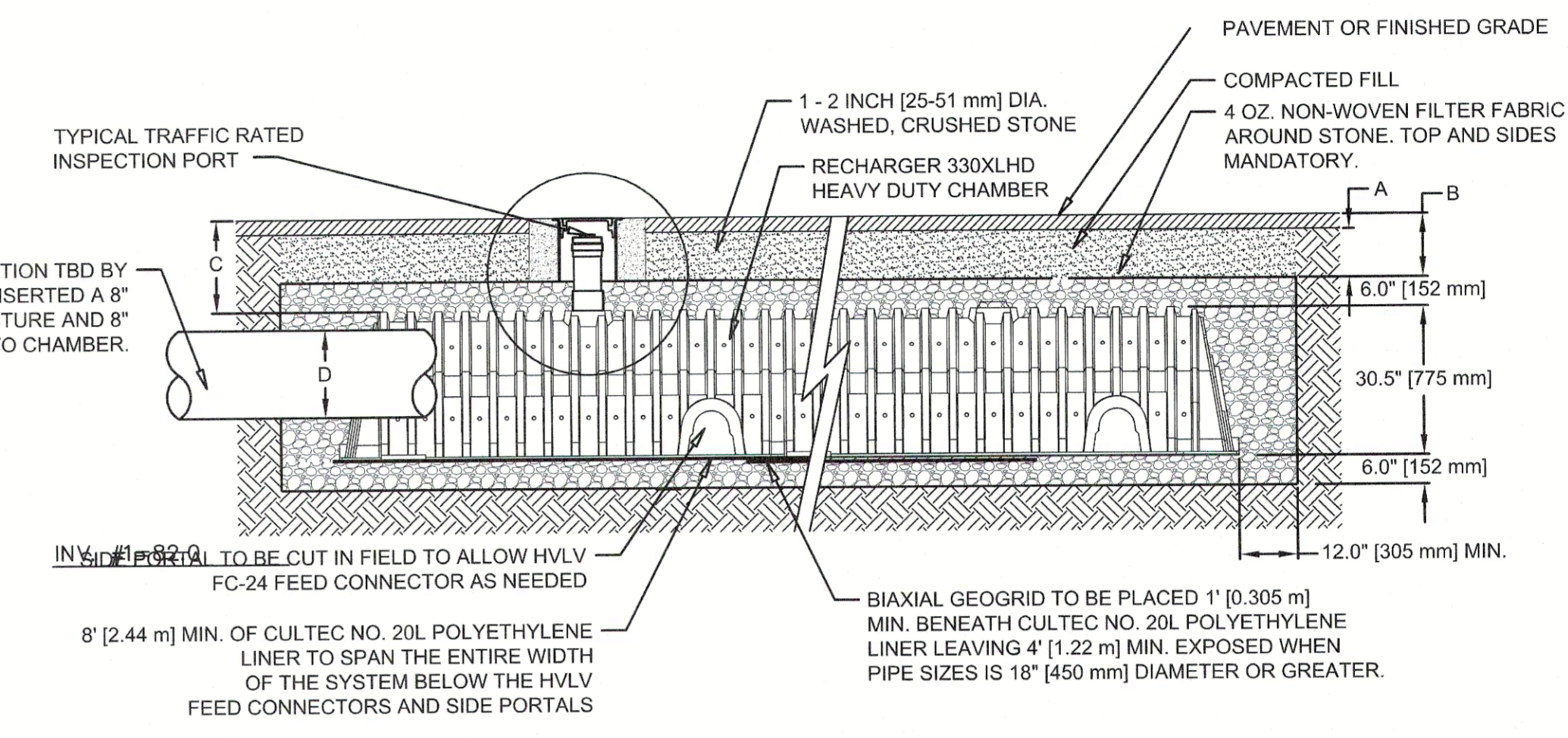
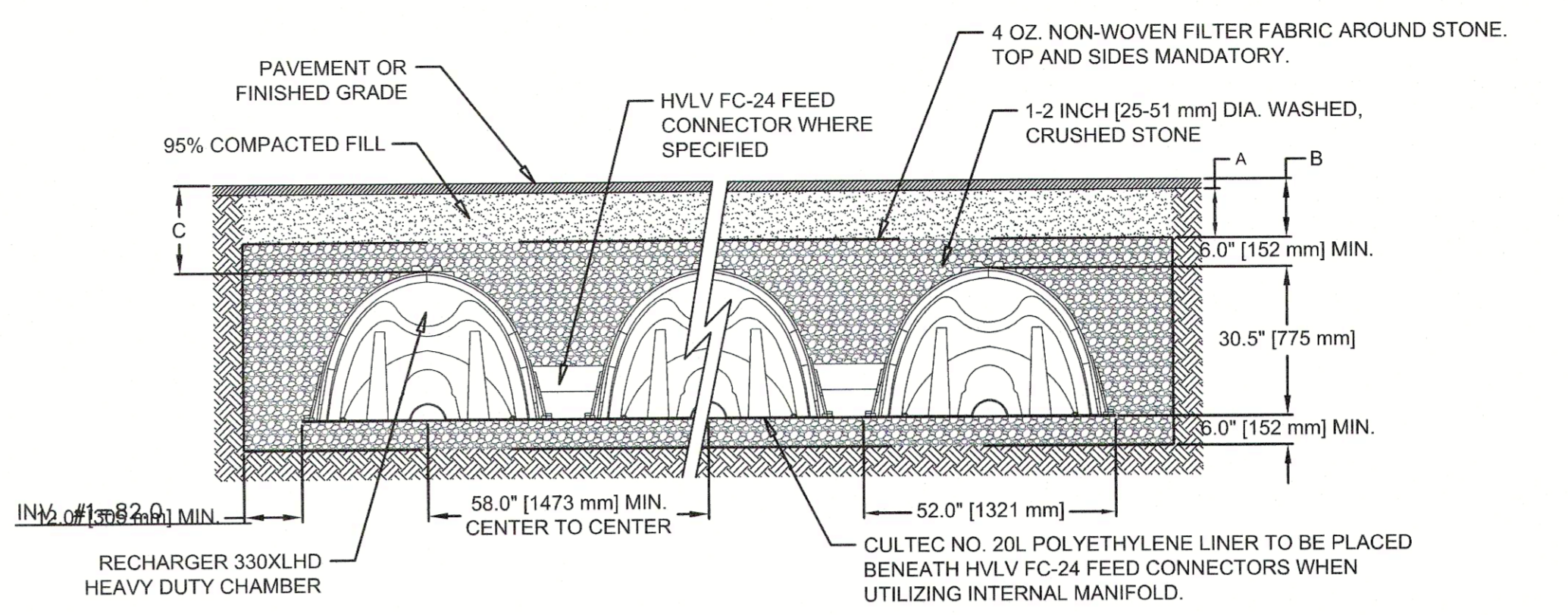
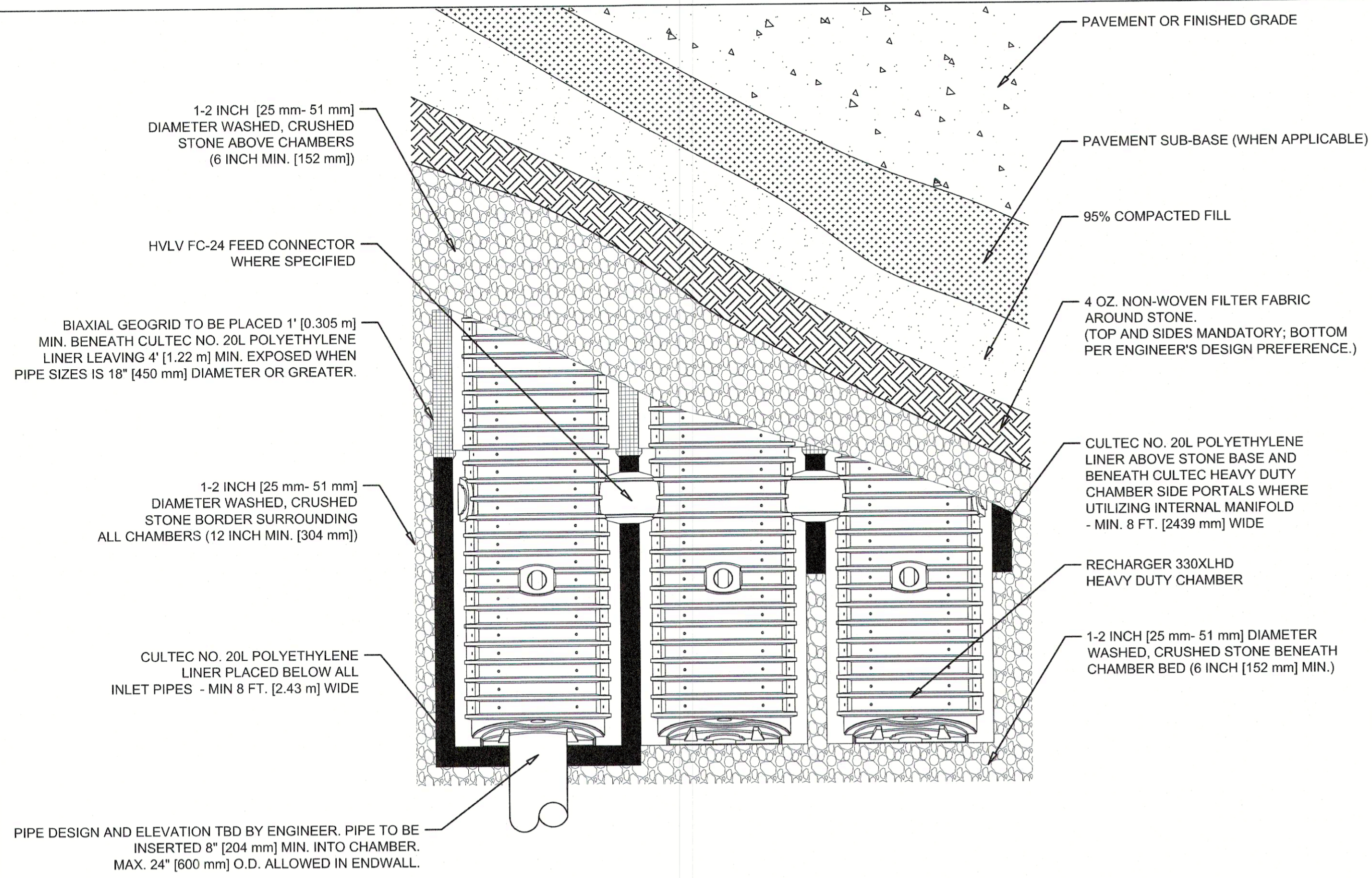


LOAM AND SEED DETAIL (DISTURBED AREAS)
N.T.S.

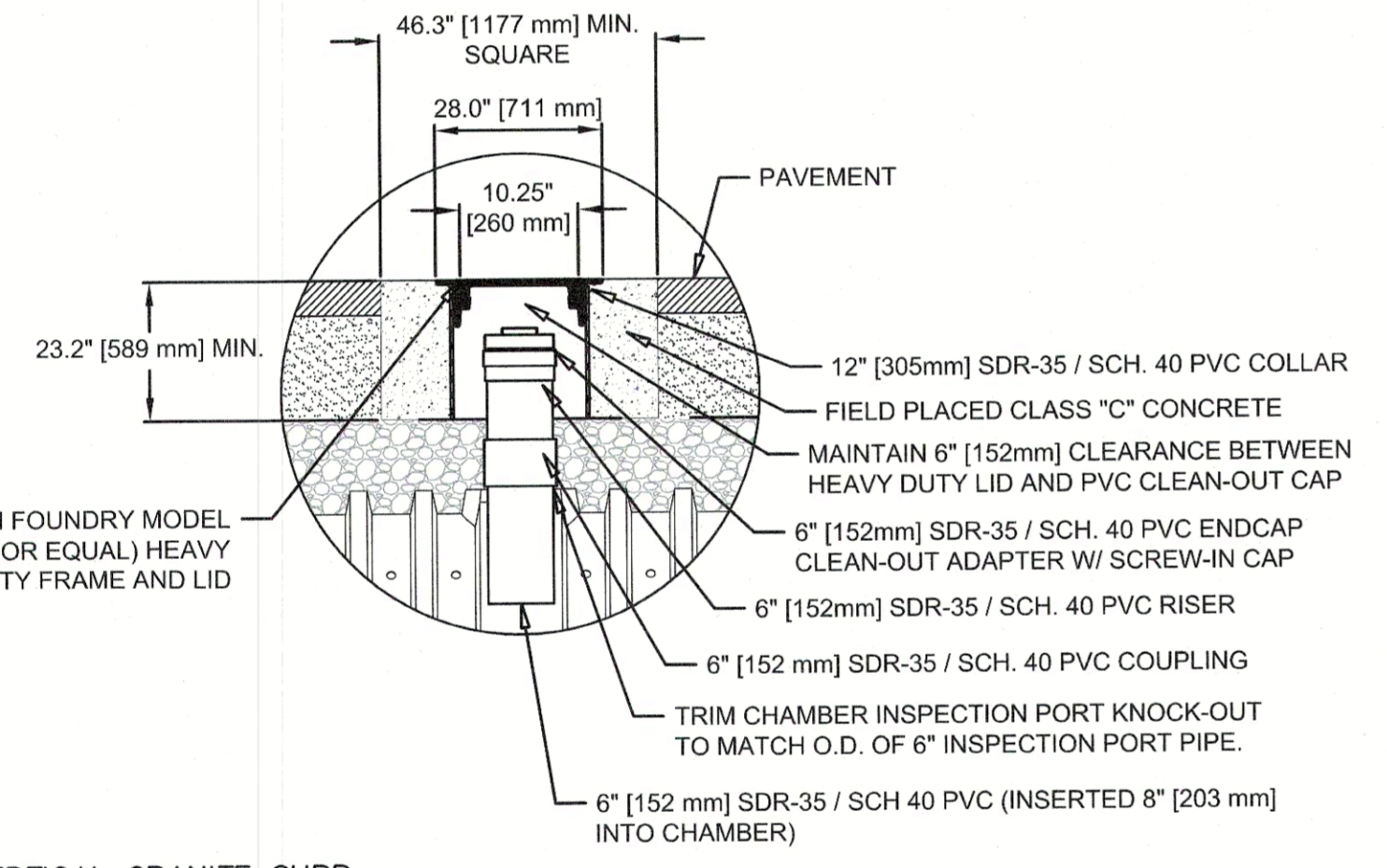
- DEMOLITION NOTES:**
1. NOTIFY DIG-SAFE AT LEAST 48-HOURS PRIOR TO ANY DEMOLITION.
 2. COORDINATE WITH GAS COMPANY ON DISCONNECTION AND NEW SERVICE FOR PROPOSED BUILDING.



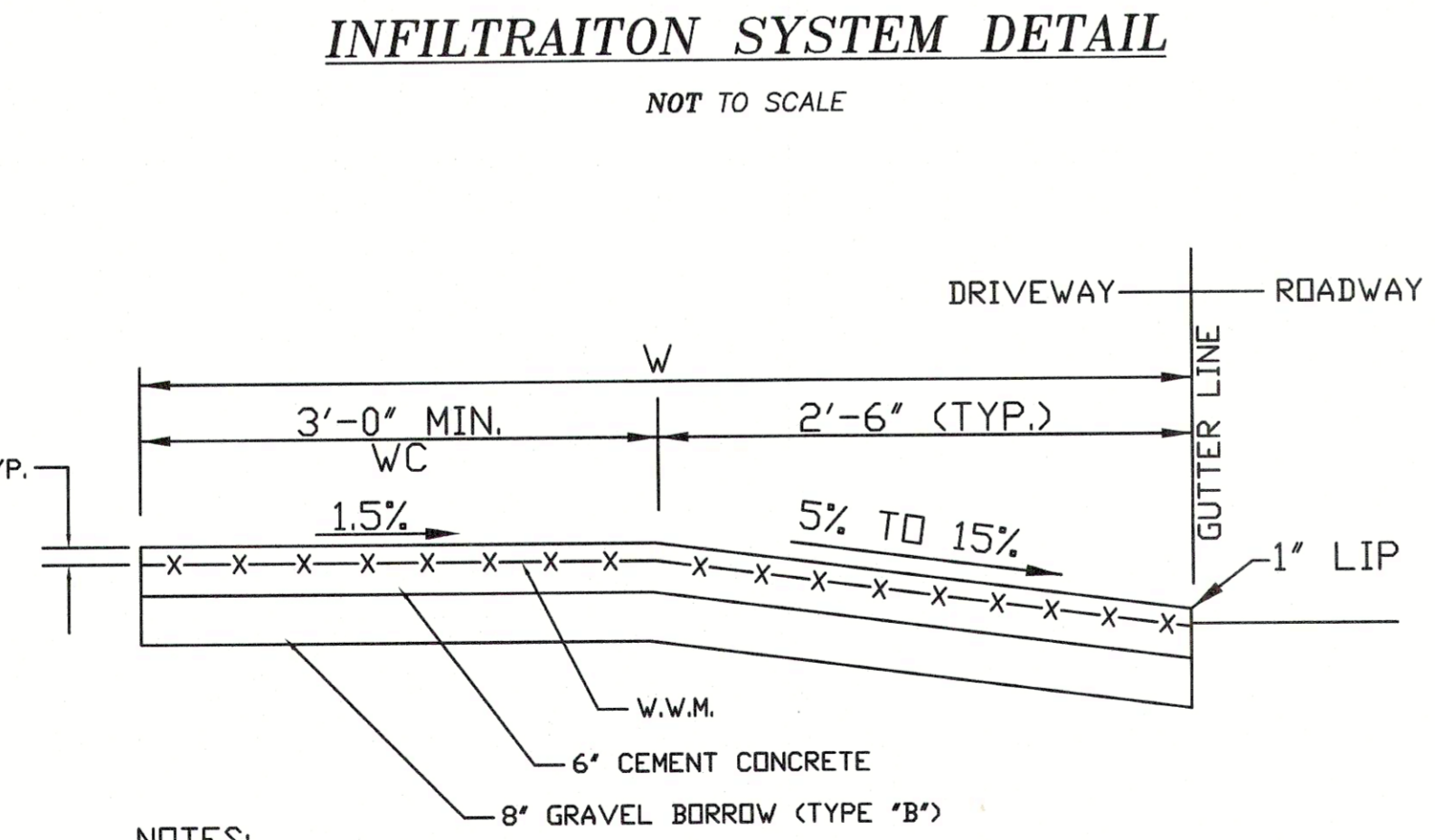
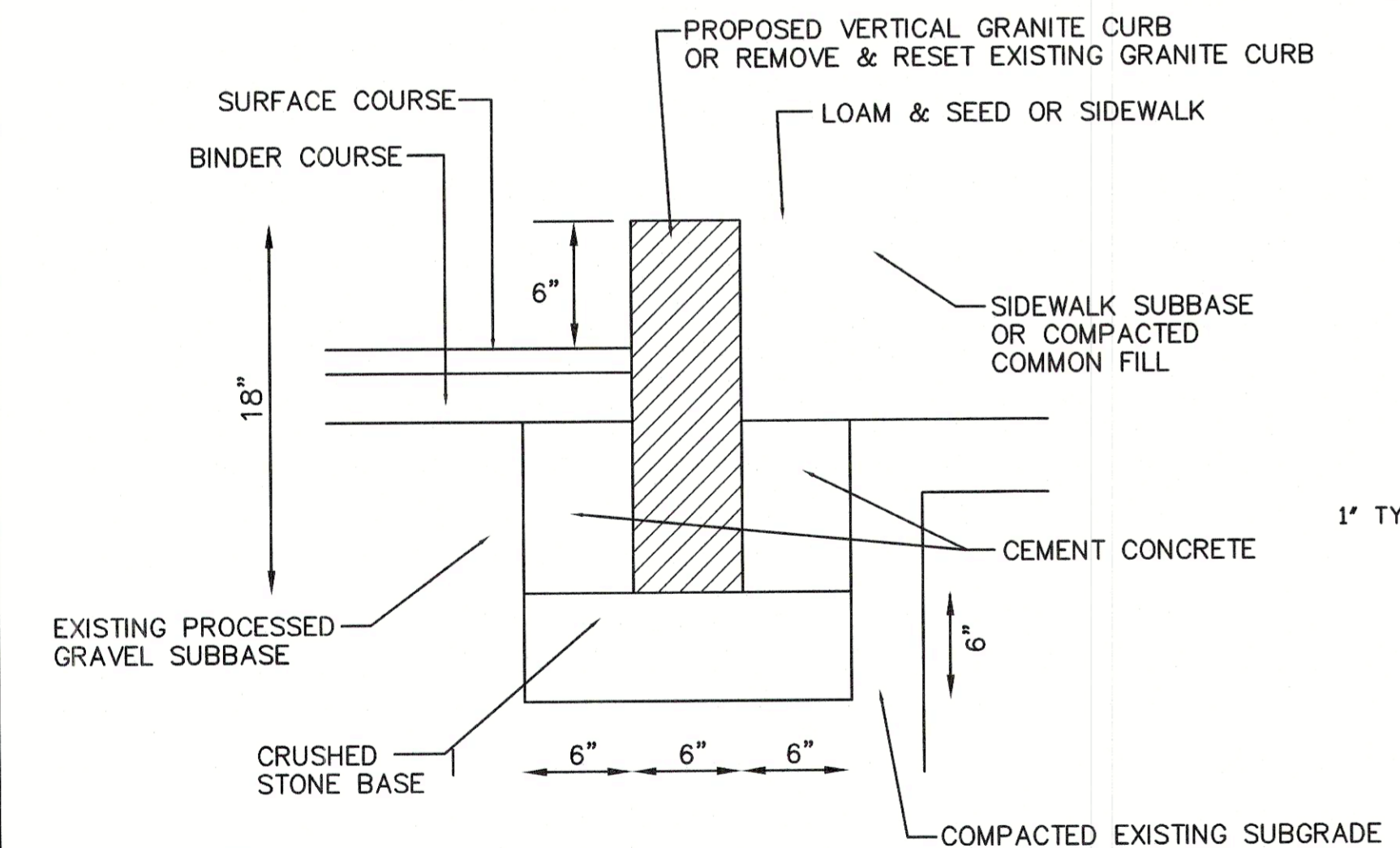
REV. #1	DATE: MARCH 15, 2021	ENGINEERING COMMENTS
DEMOLITION AND EROSION CONTROL		
15-17 FRONT STREET		
WEYMOUTH, MASSACHUSETTS		
(NORFOLK COUNTY REGISTRY OF DEEDS)		
PREPARED FOR MIKE MCGOUGH 30 BEAUMONT STREET BOSTON, MA 02124 617-594-6444		
GREATER BOSTON SURVEYING AND ENGINEERING 19 FREDRITH ROAD WEYMOUTH, MA 02189 (781) 331-6128		
DESIGN BY: PJT	DATE: FEB. 17, 2021	SCALE: 1" = 10'



- CHAMBER PARAMETERS**
- ALL PRODUCTS SHALL BE MANUFACTURED BY CULTEC, INC. OF BROOKFIELD, CT. (203-775-4416 OR 1-800-428-5832).
 - THE CHAMBER AND FEEDER WILL BE VACUUM THERMOFORMED OF BLACK HIGH MOLECULAR WEIGHT HIGH DENSITY POLYETHYLENE (HMWHDPE).
 - THE SYSTEM WILL BE DESIGNED TO WITHSTAND AASHTO H-25 LOAD RATING WHEN INSTALLED ACCORDING TO CULTEC'S RECOMMENDED INSTALLATION INSTRUCTIONS.
 - SYSTEM TO BE INSTALLED IN STRICT CONFORMANCE WITH THE MANUFACTURERS INSTALLATION PROCEDURES.

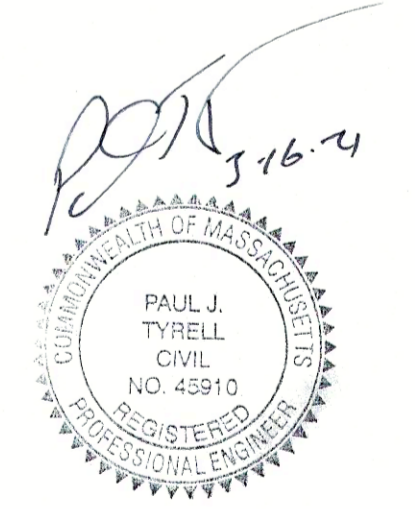


CULTEC RECHARGER 330XLHD CHAMBER (STORAGE PROVIDED = 11.32 CF/FT [1.05 m3/m] PER DESIGN UNIT)			
A	MIN. DEPTH REQUIRED OF 95% COMPACTED FILL FOR PAVED APPLICATIONS	10"	254 mm
B	MIN. DEPTH REQUIRED OF 95% COMPACTED FILL FOR UNPAVED APPLICATIONS	12"	305 mm
C	MAX. DEPTH OF COVER ALLOWED ABOVE CROWN OF CHAMBER	12"	3.66 m
D	MAX. INLET/OUTLET PIPE SIZE INTO THE END WALL OF THE CHAMBER	24"	600 mm

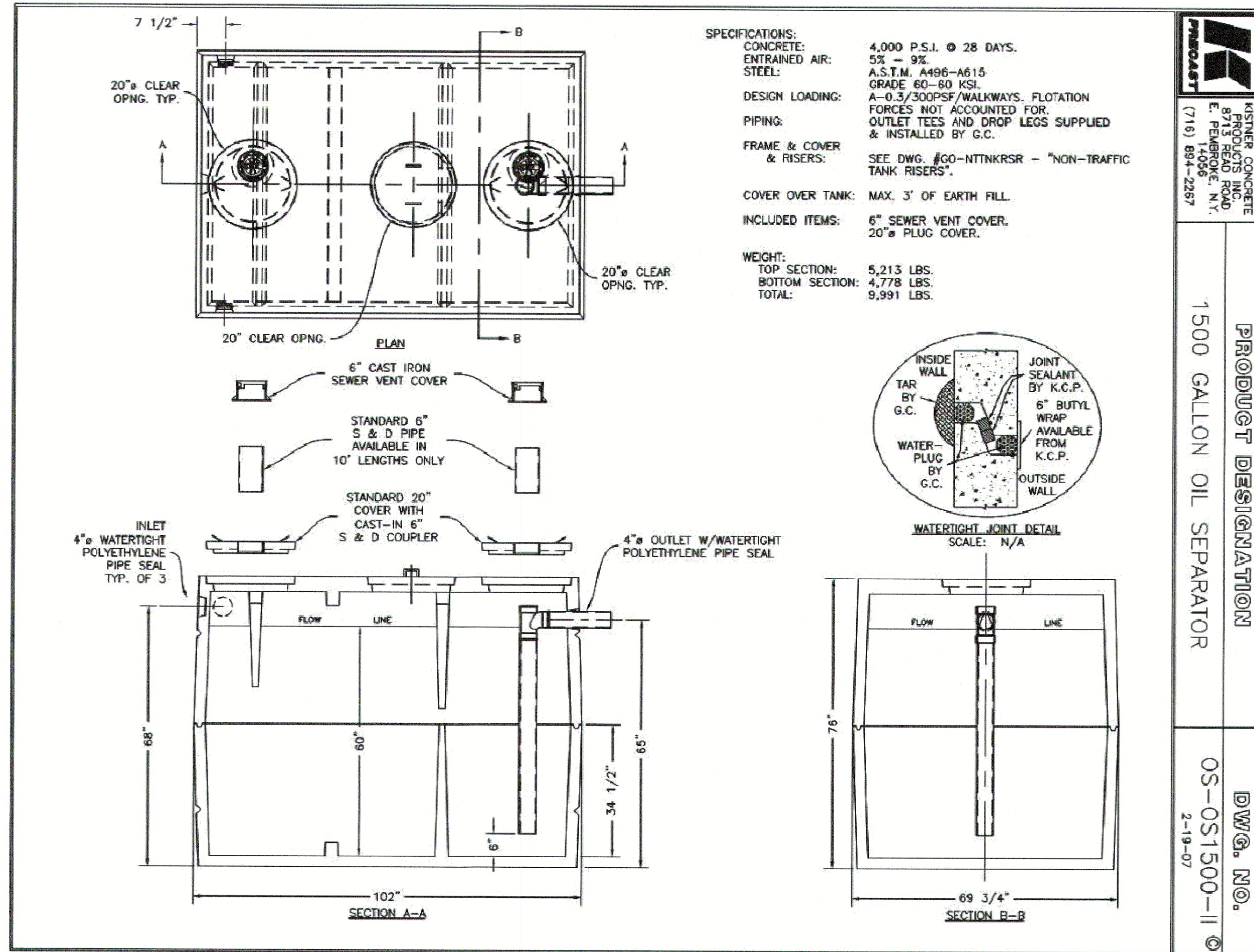


- NOTES:**
- PROVIDE 6x6 W5.4/5.4 W.W.M. IN CONCRETE
 - USE 4000 P.S.I. CONCRETE, 6" THICK MIN.
- WC = WHEELCHAIR (PATHWAY)
W = SIDEWALK WIDTH
W.W.M. = WELDED WIRE MESH
- CROSS SECTION OF CEMENT CONCRETE DRIVEWAY APRON**
NOT TO SCALE

- NOTES:**
- THIS PROCEDURE IS APPLICABLE ONLY IF CURB IS TO BE SET AFTER THE BASE AND/OR BINDER COURSES ARE IN PLACE OR FOR RESETTING CURB.
 - CUT NEAT LINE 6" FROM CURB LINE AND REMOVE PAVEMENT, BASE AND SUBGRADE, PLACE AND COMPACT CRUSHED STONE BASE, SET CURB TO PROPER GRADE, PLACE AND COMPACT GRAVEL SUBBASE, PLACE CEMENT CONCRETE IN FRONT AND BACK OF CURB. WHEN THE CONCRETE IS SUFFICIENTLY CURED, PLACE THE TWO COURSES OF ASPHALT, MORTAR AND POINT THE CURB JOINTS.
 - ANY DESIGNATED CEMENT CONCRETE THAT IS ACCEPTABLE UNDER SECTION M4 OF THE STANDARD MHD SPECIFICATIONS MAY BE USED. BITUMINOUS CONCRETE SHALL NOT BE USED AS A SUBSTITUTE.
- GRANITE CURB DETAIL**
NOT TO SCALE

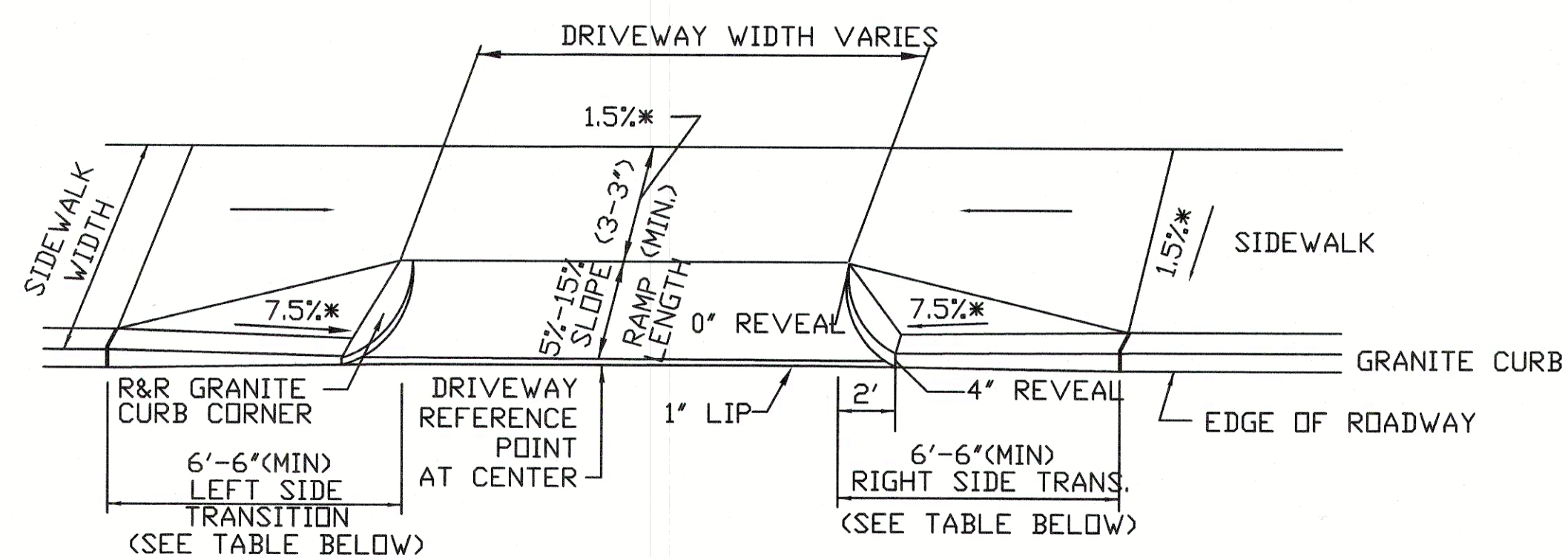


REV. #1	DATE: MARCH 15, 2021	ENGINEERING COMMENTS
PLAN OF PROPOSED CONSTRUCTION 15-17 FRONT STREET WEYMOUTH, MASSACHUSETTS (NORFOLK COUNTY REGISTRY OF DEEDS)		
PREPARED FOR MIKE MCGOUGH 30 BEAUMONT ST BOSTON, MA 02124 617-594-6444		
GREATER BOSTON SURVEYING AND ENGINEERING 19 FREDTH ROAD WEYMOUTH, MA 02189 (781) 331-6128		
DESIGN BY: PJT	DATE: FEB. 17, 2021	SCALE: AS NOTED



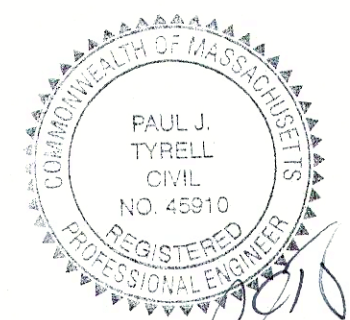
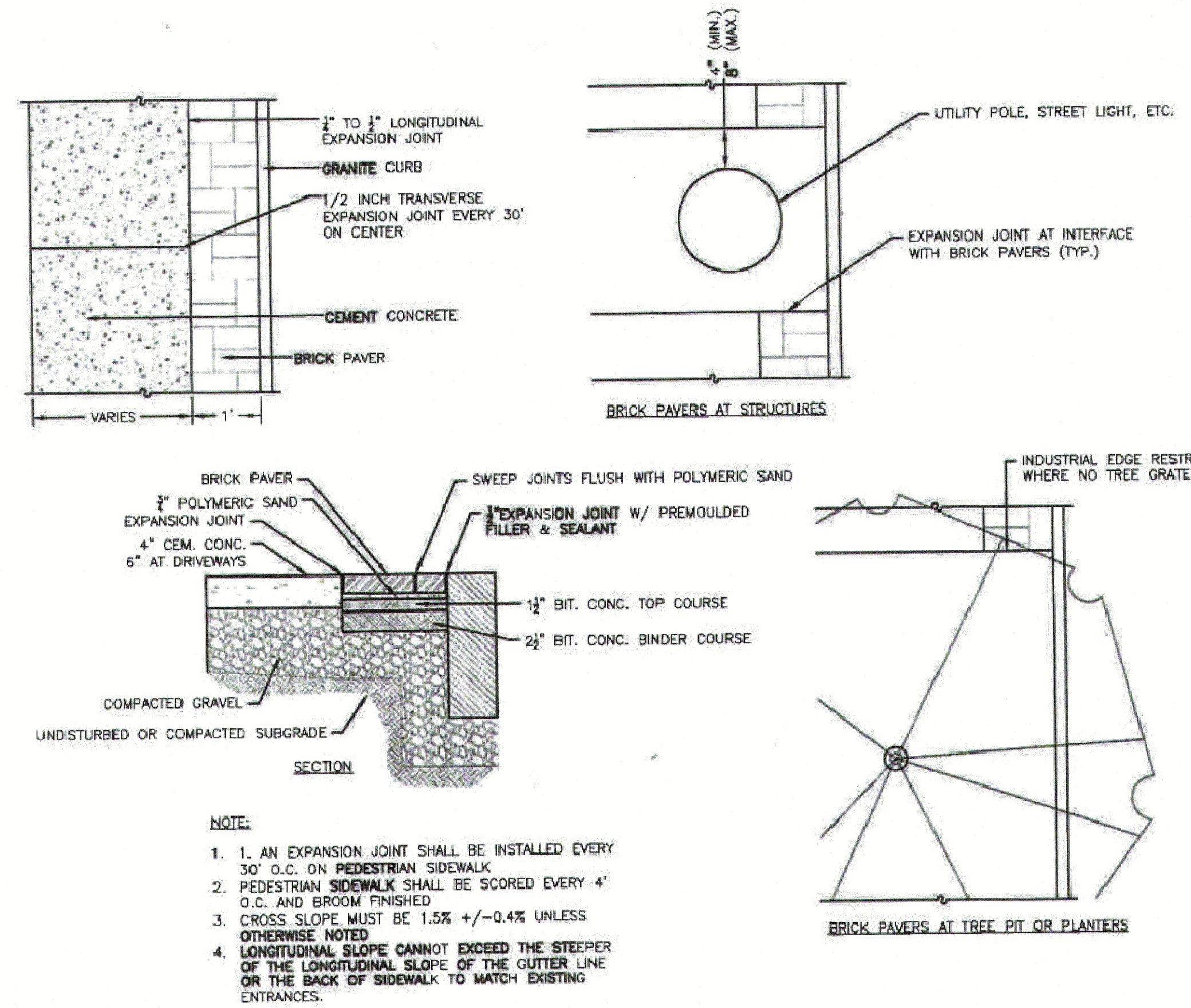
1500 GAL OIL & WATER SEPARATOR

NOT TO SCALE



SIDEWALK THROUGH DRIVEWAYS WITH CURB RETURNS

NOT TO SCALE



REV. #1	DATE: MARCH 15, 2021	ENGINEERING COMMENTS
PLAN OF PROPOSED CONSTRUCTION 15-17 FRONT STREET WEYMOUTH, MASSACHUSETTS (NORFOLK COUNTY REGISTRY OF DEEDS)		
PREPARED FOR MIKE MCGOUGH 30 BEAUMONT ST BOSTON, MA 02124 617-594-6444		
GREATER BOSTON SURVEYING AND ENGINEERING 19 FREDRICK ROAD WEYMOUTH, MA 02189 (781) 331-6128		
DESIGN BY: PJT	DATE: FEB. 17, 2021	SCALE: AS NOTED