

ACCESS DRIVE IMPROVEMENTS

CHARLOTTE STREET & 0 FINNELL DRIVE, WEYMOUTH, MA 02188

DRAWING INDEX:

- C-1 COVER SHEET
- C-2 OVERALL LAYOUT PLAN
- C-2.1 DRIVEWAY PLAN (1 OF 2)
- C-2.2 DRIVEWAY PLAN (2 OF 2)
- C-3 CONSTRUCTION DETAILS SHEET

APPLICANT

BRISTOL BROS. DEVELOPMENT CORP.
190 OLD DERBY STREET
HINGHAM, MA 02043

ENGINEER

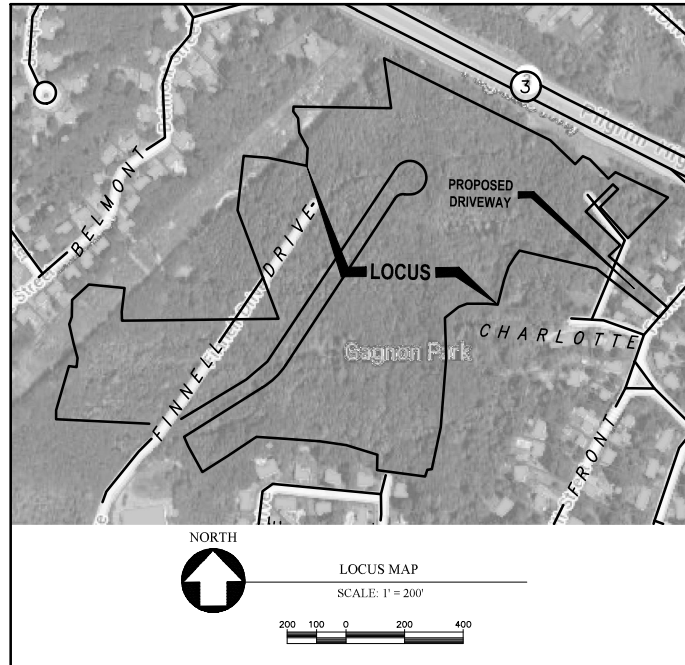
CROCKER DESIGN GROUP, LLC.
2 SHARP STREET, UNIT B
HINGHAM, MA 02043
781-820-0416

SURVEYOR

MCKENZIE ENGINEERING GROUP, INC.
150 LONGWATER DRIVE
NORWELL, MA 02061
781-792-3900

WETLAND SCIENTIST


SOUTH RIVER ENVIRONMENTAL
61 MEETINGHOUSE LANE
MARSHFIELD, MA 02050
978-497-0854

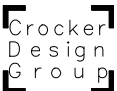


RECORD OWNERS

- | | | |
|-------------------------|-----------------------------|-------------------------------|
| 0 FINNELL DRIVE | PARCEL: 32-423-4 (34.64 AC) | BRISTOL BROS DEVELOPMENT CORP |
| 0 FINNELL DRIVE | PARCEL: 36-452-9 (9.67 AC) | BRISTOL BROS DEVELOPMENT CORP |
| 775 FRONT STREET (REAR) | PARCEL: 32-421-1 (1.16 AC) | BRISTOL BROS DEVELOPMENT CORP |
| CHARLOTTE STREET | PRIVATE WAY | |

Date	Description	No.


 GABRIEL R. CROCKER
 PROFESSIONAL ENGINEER, MA REGISTRATION #47917

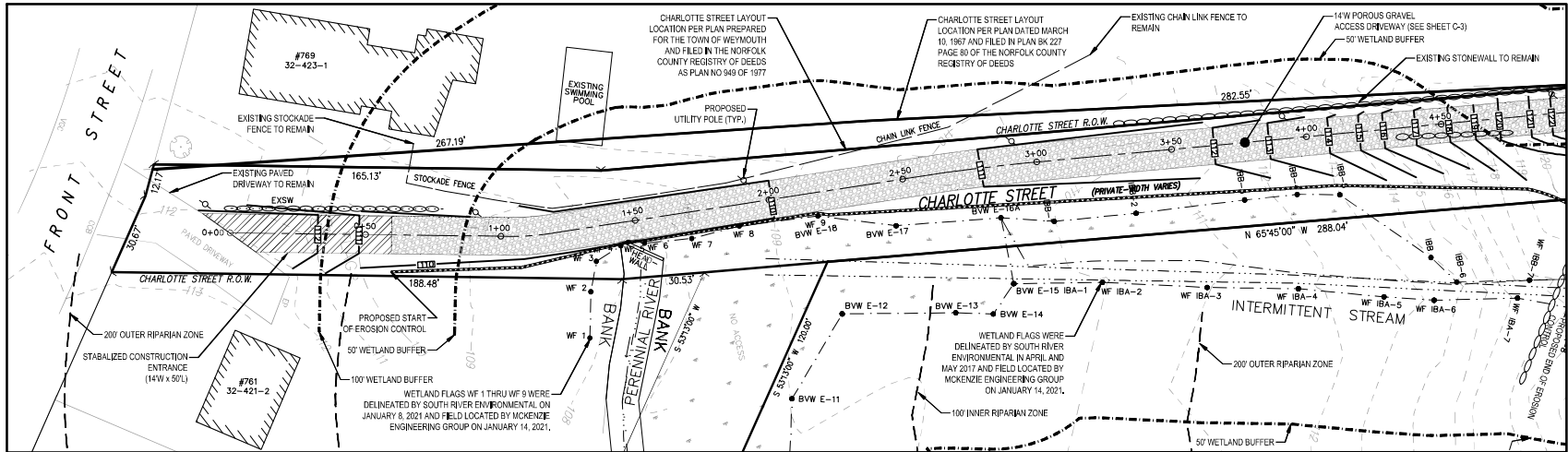

 2 SHARP STREET, UNIT B
 HINGHAM, MA 02043
 P: 781-999-0808

Project
ACCESS DRIVE IMPROVEMENTS
 0 FINNELL DRIVE
 WEYMOUTH, MA 02188

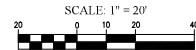
Prepared for
BRISTOL BROS. DEVELOPMENT CORP.
 190 OLD DERBY STREET, SUITE 311
 HINGHAM, MA 02043

Drawing Title
COVER SHEET

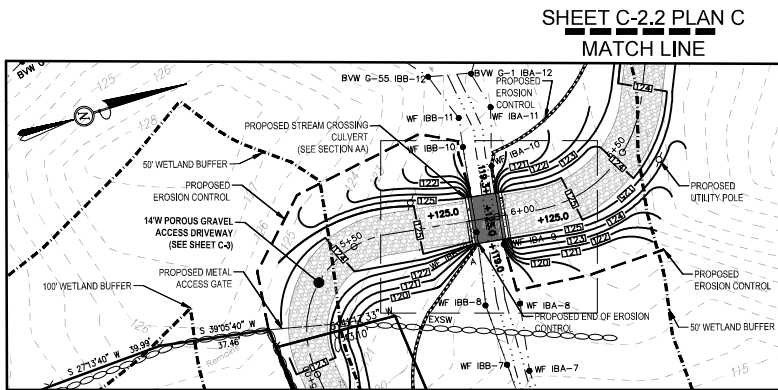
Project No.	100203	Drawing No.	C-1
Date	3/28/21		
Scale	SEE PLAN		
Drawn By	CRH		
Approved By	CRH		



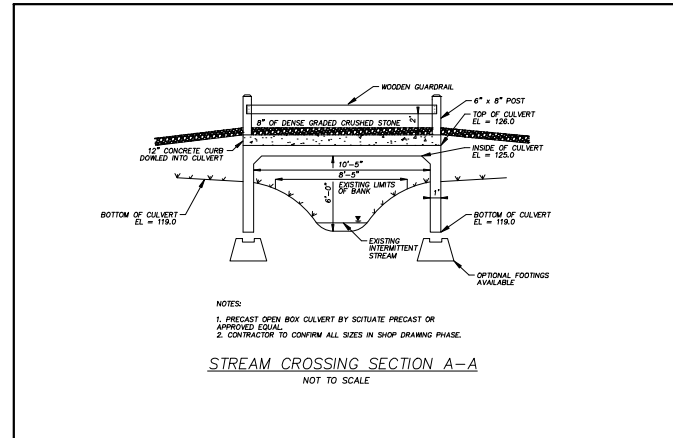
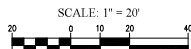
DRIVEWAY PLAN A
STATION 00+00 TO 04+96



MATCH LINE
PLAN B



MATCH LINE
PLAN A
DRIVEWAY PLAN B
STATION 04+96 TO 06+81



NOTES:
1. PRECAST OPEN BOX CULVERT BY SQUARE PRECAST OR APPROVED EQUAL.
2. CONTRACTOR TO CONFIRM ALL SIZES IN SHOP DRAWING PHASE.
STREAM CROSSING SECTION A-A
NOT TO SCALE

Date	Description	No.
	Revisions	

GABRIEL R. CROCKER
PROFESSIONAL ENGINEER, MA REGISTRATION #47917

Crocker Design Group
2 SHARP STREET, UNIT B
HINGHAM, MA 02043
P: 781-919-0808

ACCESS DRIVE IMPROVEMENTS
8 FINNELL DRIVE
WEYMOUTH, MA 02198

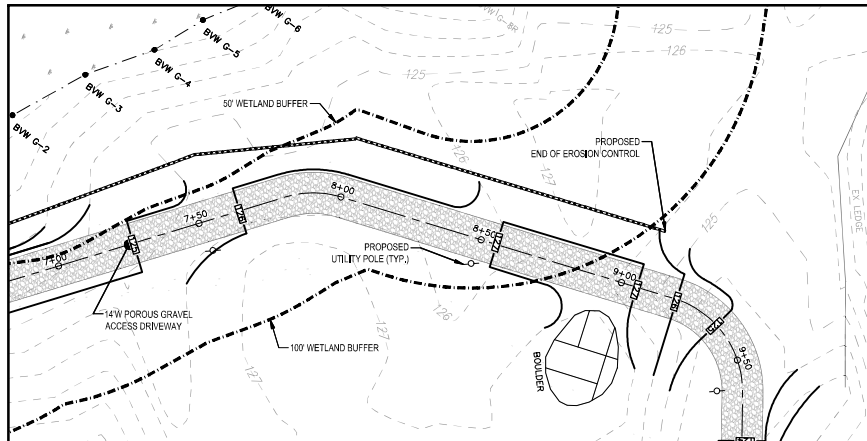
BRISTOL BROS. DEVELOPMENT CORP.
190 OLD DEBRY STREET, SUITE 311
HINGHAM, MA 02043

DRIVEWAY PLAN

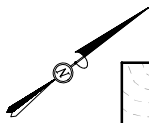
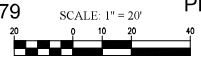
Project No.	100403	Drawing No.	C-2.1
Date	3/30/21		
Scale	SEE PLAN		
Drawn By	CHS		
Approved By	GRC		



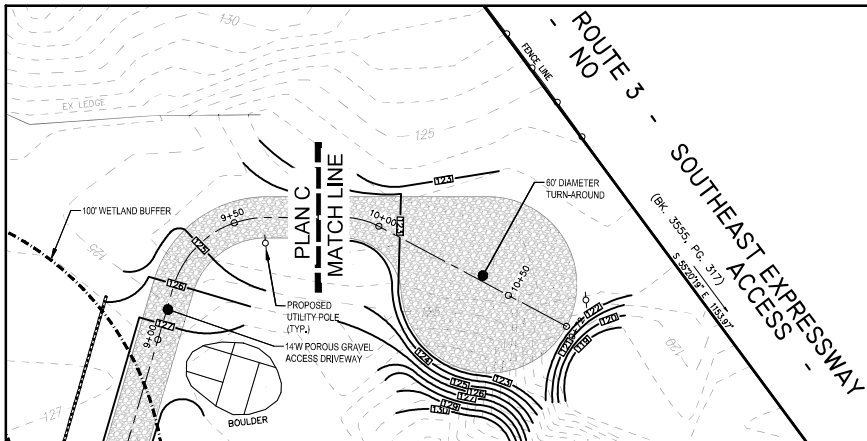
SHEET 2.1 PLAN B
MATCH LINE



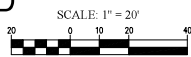
ACCESS DRIVEWAY PLAN C
STATION 06+81 TO 09+79



PLAN C
MATCH LINE



ACCESS DRIVEWAY PLAN D
STATION 09+79 TO 10+72



Date	Description	No.


 GABRIEL R. CROCKER
 CIVIL ENGINEER
 PROFESSIONAL ENGINEER, MA REGISTRATION #49917

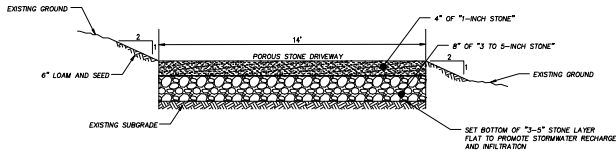
Crocker Design Group
 2 SHARP STREET, UNIT B
 HINGHAM, MA 02043
 P: 781-919-0808

Project
ACCESS DRIVE IMPROVEMENTS
 0 FINNELL DRIVE
 WEYMOUTH, MA 02188

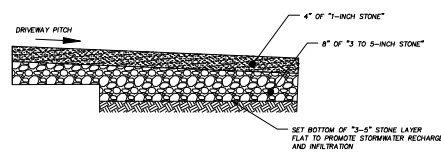
Prepared for
BRISTOL BROS. DEVELOPMENT CORP.
 190 OLD DERBY STREET, SUITE 311
 HINGHAM, MA 02043

Drawing Title
DRIVEWAY PLAN

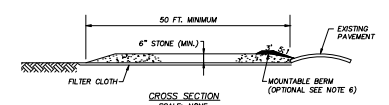
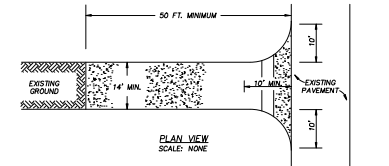
Project No.	156223	Drawing No.	C-2.2
Date	3/3/21		
Scale	SEE PLAN		
Drawn By	CRW		
Approved By	CRW		



POROUS STONE DRIVEWAY CROSS SECTION
NOT TO SCALE

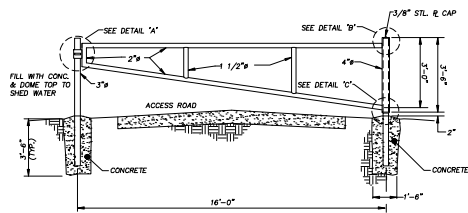


POROUS STONE DRIVEWAY CENTERLINE SECTION A-A
NOT TO SCALE



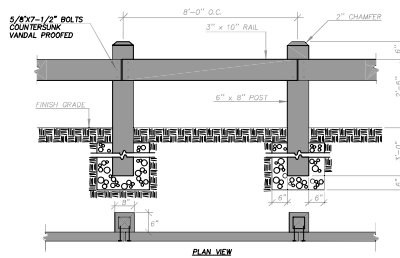
- CONSTRUCTION SPECIFICATIONS**
- STONE SIZE—1/2" STONE, OR RECLAIMED OR RECYCLED CONCRETE EQUIVALENT.
 - LENGTH—RECOMMEND GREATER THAN OR EQUAL TO 50 FEET WHERE SOILS ARE SANDS AND GRAVELS AND 100 FEET IN SILTS AND CLAYS.
 - THICKNESS—NOT LESS THAN SIX (6) INCHES.
 - WIDTH—FIFTEEN (15) FOOT MINIMUM, BUT NOT LESS THAN THE FULL WIDTH AT POINTS WHERE INGRESS OF EGRESS OCCURS.
 - FILTER CLOTH—SHALL BE PLACED OVER THE ENTIRE AREA PRIOR TO PLACING OF STONE.
 - SURFACE WATER—ALL SURFACE WATER FLOWING OR DIVERTED TOWARD CONSTRUCTION ENTRANCES SHALL BE PIPED ACROSS THE ENTRANCE. IF PIPING IS IMPRACTICAL, A MOUNTABLE BEAM SHALL BE INSTALLED.
 - MAINTENANCE—THE ENTRANCE SHALL BE MAINTAINED IN A CONDITION WHICH SHALL PREVENT TRACKING OF FLOWING OF SEDIMENT ONTO PUBLIC RIGHTS-OF-WAY. THIS MAY REQUIRE PERIODIC TOP DRESSING WITH ADDITIONAL STONE AS CONDITIONS DEMAND AND REPAIR OR CLEANOUT OF ANY MEASURES USED TO TRAP SEDIMENT. ALL SEDIMENT SPILLED, DROPPED, WASHED OR TRACKED ONTO PUBLIC RIGHTS-OF-WAY MUST BE REMOVED IMMEDIATELY.
 - PERIODIC INSPECTION AND NEEDED MAINTENANCE SHALL BE PROVIDED.

CONSTRUCTION ENTRANCE
NOT TO SCALE



NOTES:

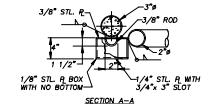
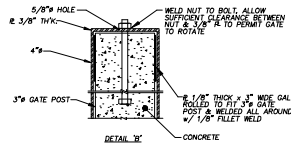
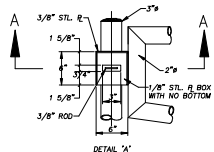
- ALL METAL USED IN THE MANUFACTURE OF THE ACCESS ROAD GATE TO BE HOT DIP GALVANIZED. ALL WELDS & PIPE TO BE PAINTED & TOUCHED UP IN ACCORDANCE WITH STANDARD SPECIFICATION SECTION 02050 AND IN ACCORDANCE WITH MANUFACTURER'S RECOMMENDATIONS.
- ALL JOINTS TO BE WELDED ALL AROUND WITH 3/16" WELDS.
- ALL PIPE TO BE SCHEDULE 40 STEEL. DIAMETERS SHOWN ARE NOMINAL PIPE SIZE.
- FURNISH FORK LATCH
- CONTRACTOR SHALL PROVIDE AN ADDITIONAL 3" POST W/ 3/8" ROD LOCATE TO HOLD GATE IN AN OPEN POSITION 90° FROM THAT SHOWN BELOW.



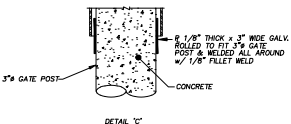
NOTES:

- ALL WOOD TO BE PRESSURE TREATED. SELECT PINE GRADE 'B' OR BETTER.
- ALL HARDWARE TO BE GALVANIZED.
- SET POSTS 3" - 6" DEEP IN WELL-TAMPED GRAVEL BACKFILL.
- CONTRACTOR MAY OPT TO DRIVE POSTS.

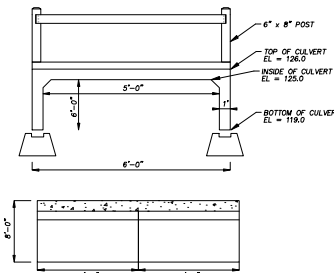
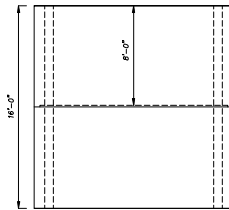
WOODEN GUARD RAIL
NOT TO SCALE



ACCESS GATE DETAIL
NOT TO SCALE



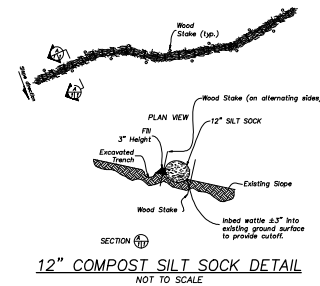
- DESIGN NOTES:
- CONCRETE 5,000 PSI @ 28 DAYS
 - REINFORCEMENT PER ENGINEERS CALCULATIONS
 - DESIGN FOR H=20 LOADING
 - CULVERT TO BE EMBEDDED 2 FEET INTO STREAM BED



NOTES:

- PRECAST OPEN BOX CULVERT BY SCITUATE PRECAST OR APPROVED EQUAL.
- CONTRACTOR TO CONFIRM ALL SIZES IN SHOP DRAWING PHASE.

PRECAST OPEN BOTTOM BOX CULVERT (SCITUATE PRECAST)
NOT TO SCALE



12" COMPOST SILT SOCK DETAIL
NOT TO SCALE

Date	Description	No.
	Revisions	

GABRIEL R. CROCKER
CIVIL ENGINEER
MA REGISTRATION #47917

Crocker Design Group
2 SHARP STREET, UNIT B
HINGHAM, MA 02043
P: 781-919-0808

Project
ACCESS DRIVE IMPROVEMENTS
1 FINNELL DRIVE
WEYMOUTH, MA 02188

Prepared for
BRISTOL BROS. DEVELOPMENT CORP.
190 OLD DERRY STREET, SUITE 311
HINGHAM, MA 02043

Drawing Title
CONSTRUCTION DETAILS

Project No. 192023 Drawing No.
Date 3/30/21
Scale SEE PLAN
Drawn By CSM
Approved By GRC

C-3