



WEYMOUTH COMMUNITY PROFILE

Prepared by the Data Center of the Metropolitan Area Planning Council
60 Temple Place, Boston, MA 02111 (617) 451-2770
January 2002



DEMOGRAPHICS

Population by Age Group (U.S. Census Bureau)

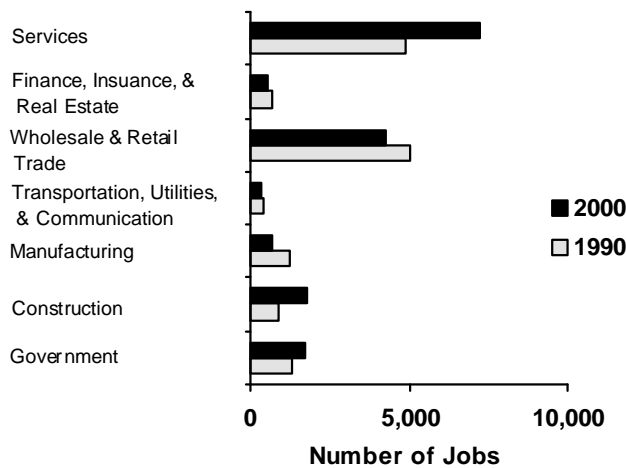
	1990	2000	Change
Median Age	34.5	38.4	11.3%
Under 5	3,454	3,436	-0.5%
5 to 9	2,961	3,430	15.8%
10 to 14	2,675	3,213	20.1%
15 to 19	3,197	2,718	-15.0%
20 to 24	4,386	2,606	-40.6%
25 to 34	10,840	8,260	-23.8%
35 to 44	8,150	9,370	15.0%
45 to 54	5,539	7,523	35.8%
55 to 64	5,377	5,119	-4.8%
65 to 74	4,442	4,343	-2.2%
75+	3,042	3,970	30.5%
Total	54,063	53,988	-0.1%
Under 18	20.2%	22.0%	
Over 65	13.8%	15.4%	

Race and Ethnicity (U.S. Census Bureau)

	1990	2000
Not Hispanic	99.3%	98.7%
White	97.3%	94.0%
Black	0.7%	1.4%
Asian	0.9%	1.6%
Other	0.4%	0.6%
2 or more	n/a	1.1%
Hispanic	0.7%	1.3%

EMPLOYMENT

Employment by Sector (MA Div. of Employment and Training)



	1990	2000
Total Employment	14,653	16,828
Unemployment Rate	5.9%	2.3%
Average Annual Wage	\$23,422	\$33,796
Number of Establishments	1,212	1,270

HOUSING

Building Permits (U.S. Census Bureau)



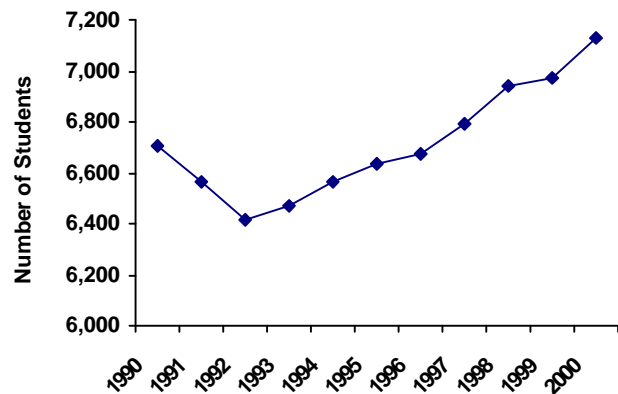
Tenure and Sales (U.S. Census Bureau and The Warren Group)

	1990	2000
Owner-Occupied	62.7%	65.7%
Renter-Occupied	32.2%	31.9%
Vacant Units	5.1%	2.4%
Total Housing Units	21,937	22,573
# of Sales	700	1,085
Median Sale Price	\$125,000	\$175,000

(All Sales)

EDUCATION

School Enrollment (MA Department of Education)



	District
School	Weymouth
Grade Levels	K to 12
Regular Day PPE	\$5,261
Students per Computer	6.7
Computers on Internet	100%



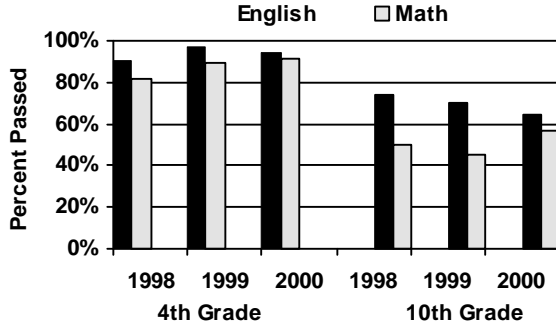
WEYMOUTH COMMUNITY PROFILE

Prepared by the Data Center of the Metropolitan Area Planning Council
60 Temple Place, Boston, MA 02111 (617) 451-2770
January 2002

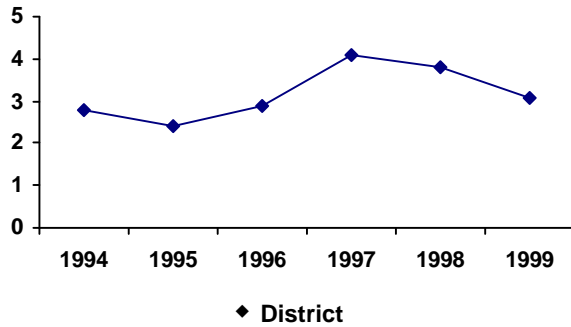


EDUCATION (continued)

MCAS Scores (MA Department of Education)



Dropout Rate (MA Department of Education)



COMMUNITY VITALITY

Voter Participation (MA Secretary of the Commonwealth)

	1990	2000	Change
Eligible Voters	43,125	42,132	-2.3%
Registered Voters	31,894	37,798	18.5%
Percent Registered	74.0%	89.7%	

Political Affiliation (MA Secretary of the Commonwealth)

	2000
Registered Democrat	35.7%
Registered Republican	13.2%
Registered Other/Unenrolled	51.1%

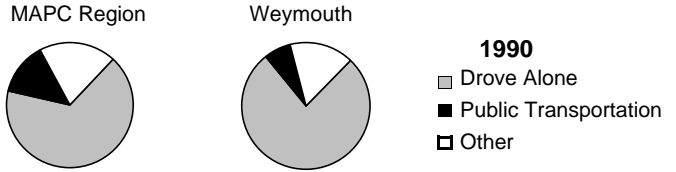
Crimes Reported (MA State Police, Crime Reporting Unit)



Blank spaces denote crimes not reported

TRANSPORTATION

Modes of Transportation (U.S. Census Bureau, MassHighway and MA DMV)



	1990	2000	Change
Eligible Drivers (16+)	44,409	43,317	-2.5%
Registered Vehicles	36,391	43,986	20.9%
Reported Fatal Crashes	4	2	-50.0%

ENVIRONMENTAL RESOURCES

Land Use (MassGIS and The MacConnell Land Use Survey)

	1991 Acres	1999 Acres	Change
Forestry	3,174	3,080	-3.0%
Agricultural	23	22	-7.7%
Open Land	1,038	978	-5.7%
Wetlands	737	738	0.1%
Single-Family	4,721	4,863	3.0%
Multi-Family	336	336	0.0%
Commercial	617	621	0.7%
Industrial	592	600	1.4%

Buildout Capacity (MAPC)

(Numbers represent buildout beyond existing development)

Developable Land Area (Acres)	1,661
Total Residential Lots	1,535
Commercial/Industrial	
Buildable Floor Area (sq. ft.)	7,645,509
Water Use (gal/day)	573,413
Dwelling Units	2,293
Future Residents	5,527
Residential Water Use (gal/day)	414,508
Municipal Solid Waste (tons/yr)	2,835
Non-Recycled Solid Waste (tons/yr)	2,016
Students	705
New Roads (miles)	20

Results of MAPC Buildout for communities based upon community input and zoning regulations

Water Use (MA Department of Environmental Protection)

Water Source	Local Sources
Water Restrictions (1999)	Mandatory
One or more Contaminated Water Sources	Yes, Treated

1994-1998 Average (gal/day)

Daily Withdrawal Amount	4,620,000
Daily Registered/Permitted Amount	4,510,000